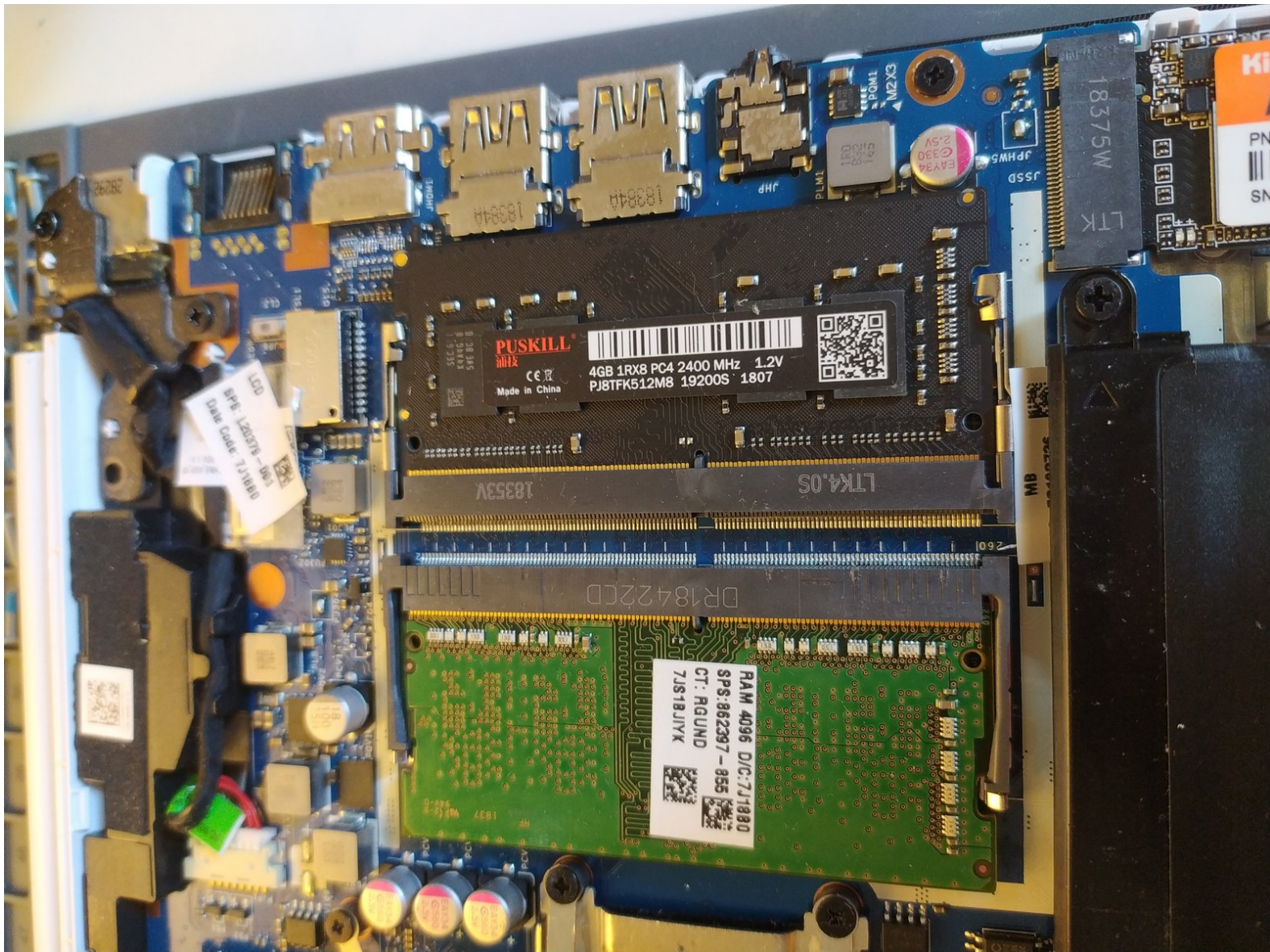




Replace or add RAM

Tutorial for adding and/or replacing RAM modules.

Written By: Léo FRAYSSE



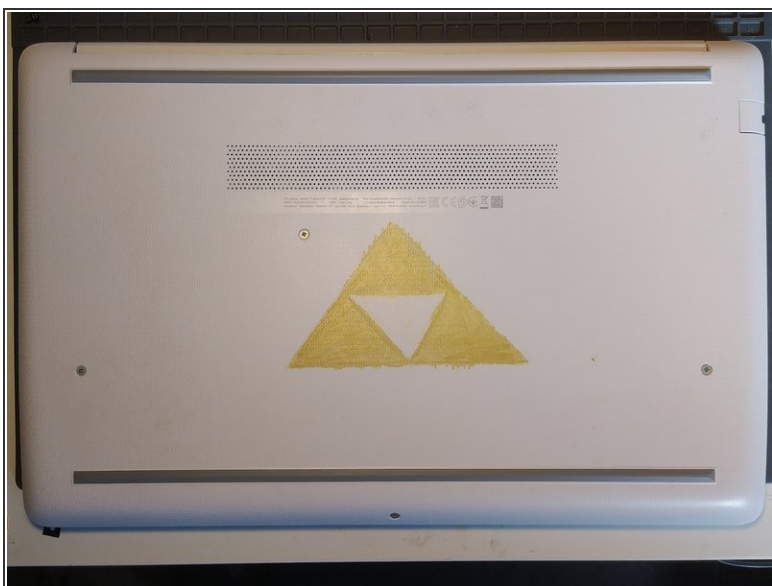
**TOOLS:**

- [New Item](#) (1)
- [Spudger](#) (1)

**PARTS:**

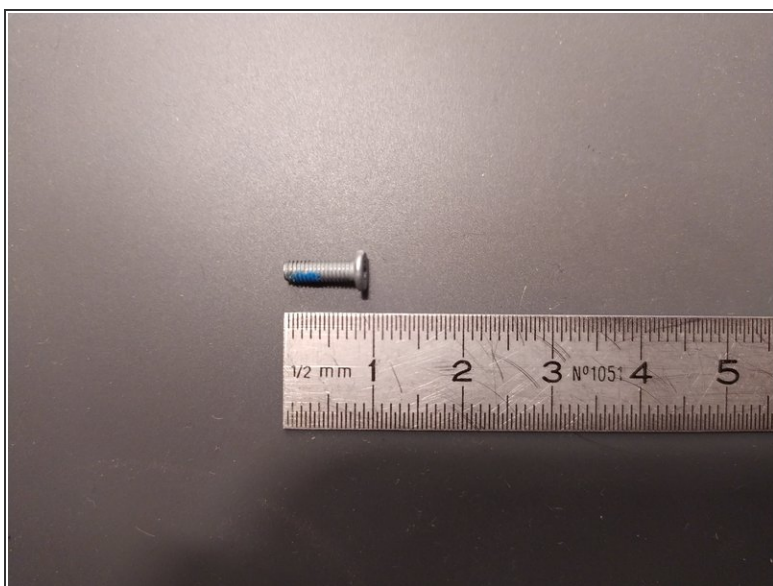
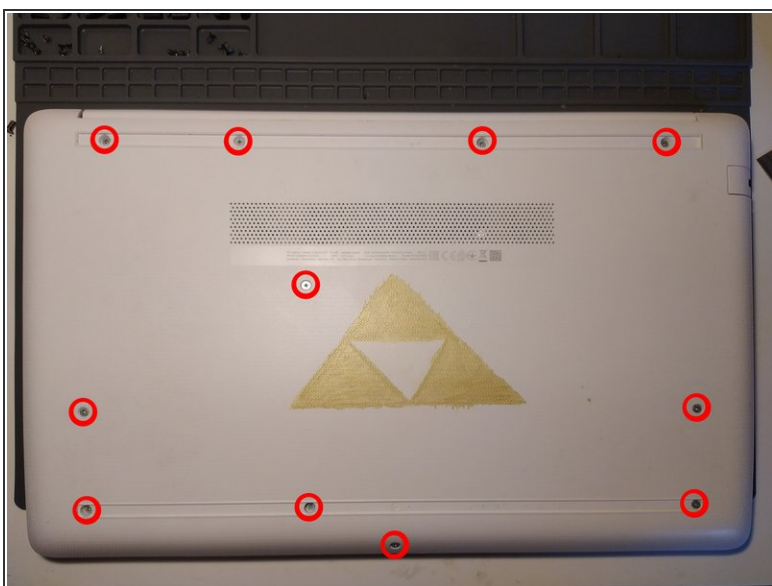
- [New Item](#) (1)

Step 1 — removal of bottom case



- remove the feet with a spudger

Step 2



- Remove the 11 screw with a PH0 screwdriver.

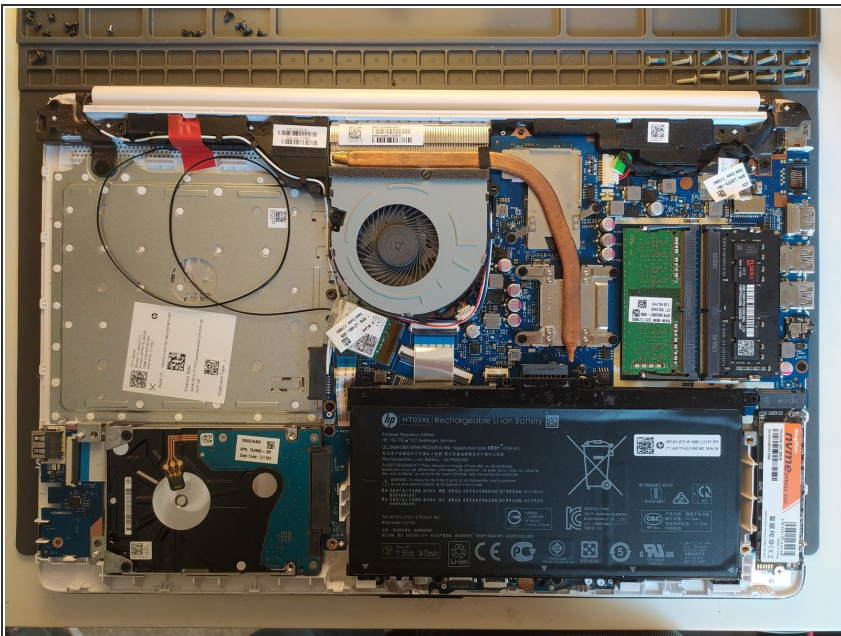
 The screws are identical

Step 3



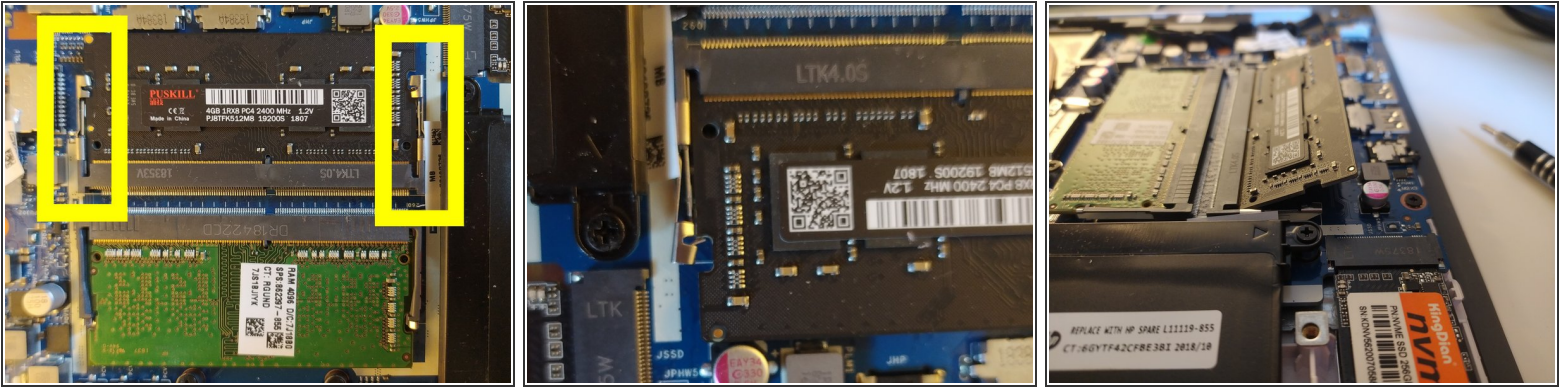
- Insert a spudger between the bottom cover and the keyboard module, then go around the whole cover to unclip everything.
- Remove the bottom cover from the computer.

Step 4



- You now have access to the inside of the machine.

Step 5 — RAM



- Flex the metal retaining clips on the side of the RAM away from one another.
- ⓘ If done correctly, the RAM will pop out of its lock.
- ⓘ To insert a module, angle it as shown in the third picture, then insert it and push it down until it locks.

To reassemble your device, follow the steps in reverse order.