



How to Fix an Overextending Holga 120N Camera Shutter

The Holga 120N camera (model number 144120) was...

Written By: Jacob DeLany



INTRODUCTION

The Holga 120N camera (model number 144120) was made in the 1980s, making it prone to natural wear and tear. When the shutter overextends, it can prevent the camera from taking a picture. An easy solution is adding a spade terminal as a block to the overextended shutter, allowing the camera to take pictures again. This is a job that doesn't require expertise on the Holga film camera's body, and the only tools required are hot glue, a Phillips screwdriver, scissors, and a boxcutter/exacto-knife.

This guide will teach you how to take the camera apart, insert the spade terminal, and seal the camera back up again.



TOOLS:

- [Phillips #00 Screwdriver](#) (1)
- [Utility Scissors](#) (1)
- [Hot Glue Gun](#) (1)
- [Utility Knife](#) (1)



PARTS:

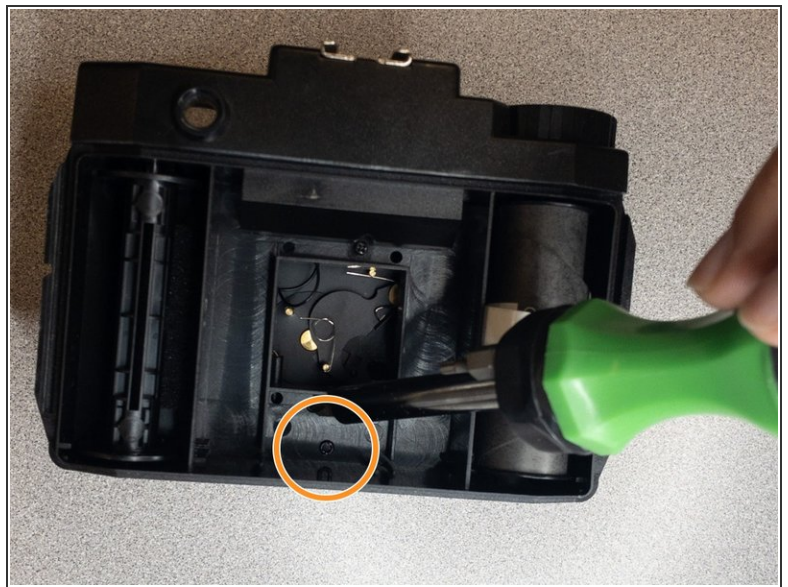
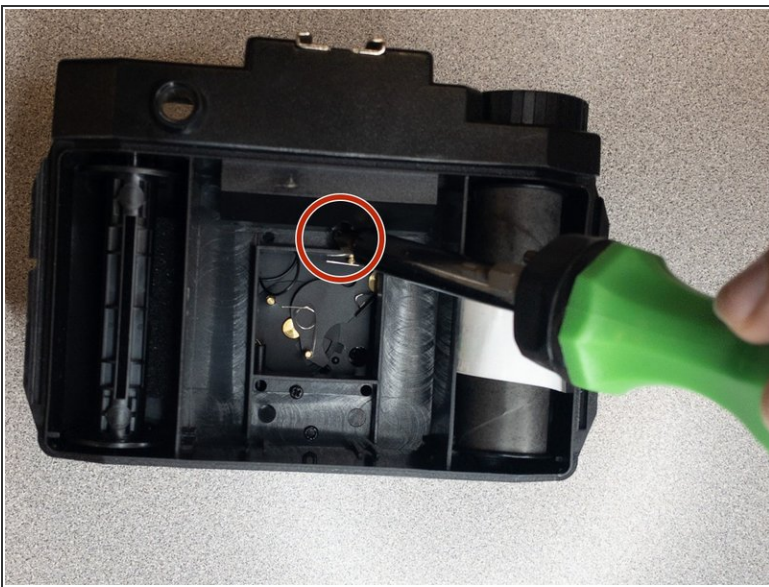
- [Spade Terminal](#) (1)

Step 1 — How to Fix an Overextending Holga 120N Camera Shutter



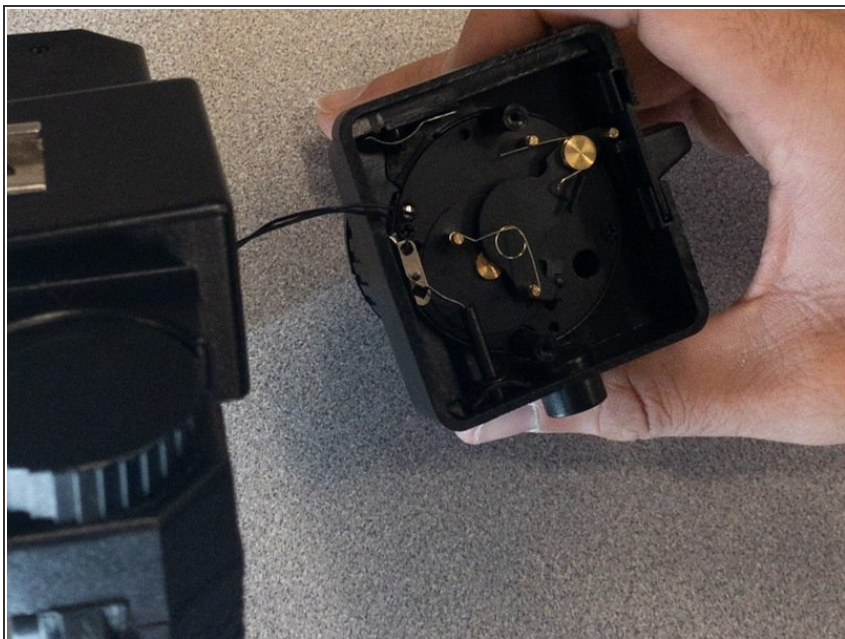
- Slide the two metal lanyard locks up and off the camera.
- Pop the back of the camera off.

Step 2



- Remove the screw above the opening to the shutter piece using a Phillips #00 screwdriver.
- Remove the screw below the opening to the shutter piece using a Phillips #00 screwdriver.

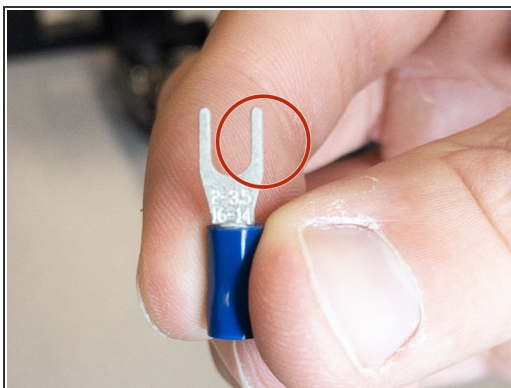
Step 3



- Pull the shutter piece out and away from the camera.

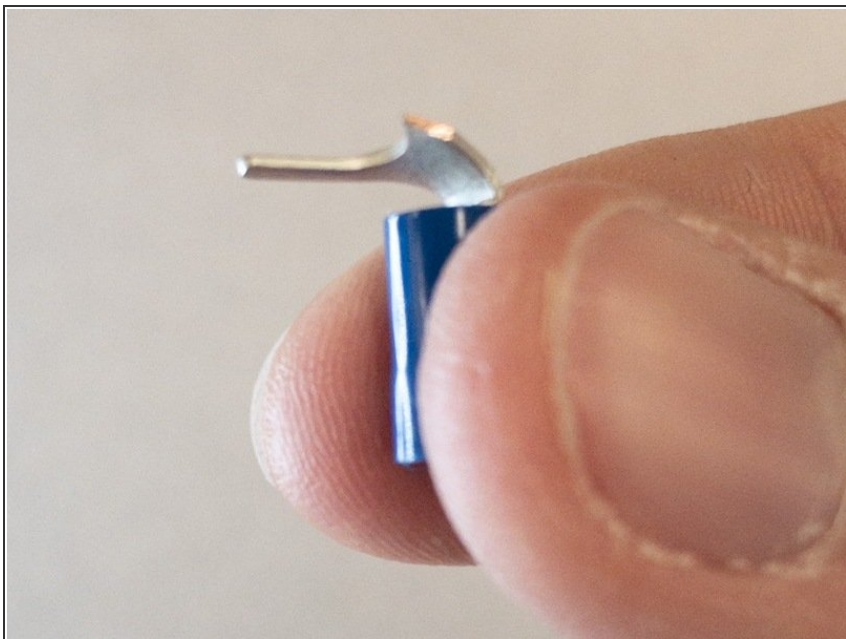
⚠ Pull the shutter piece away carefully to avoid snapping the wire.

Step 4



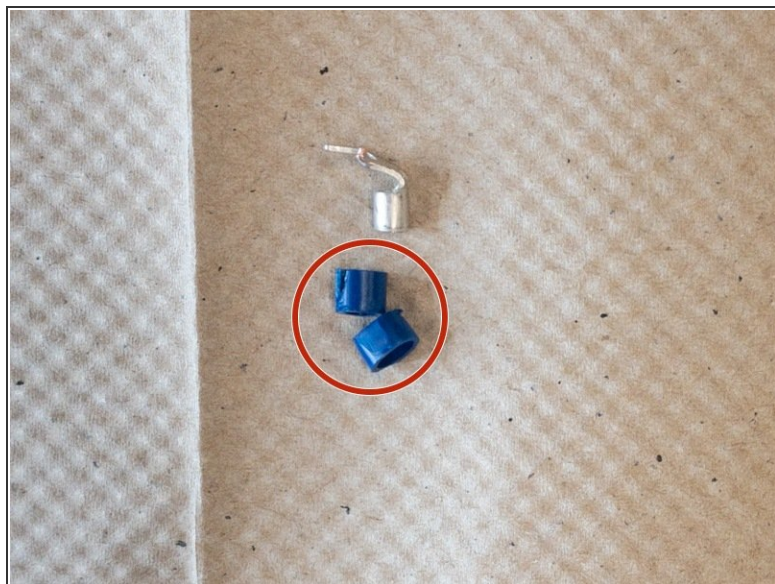
- Cut off the spade terminal's right prong with scissors.

Step 5



- Bend the spade terminal forward at a 90-degree angle.

Step 6



- Slice the blue plastic off of the spade terminal with the boxcutter/Exacto-knife.

⚠ The plastic bottom is sealed on very tightly. Use caution when cutting it away!

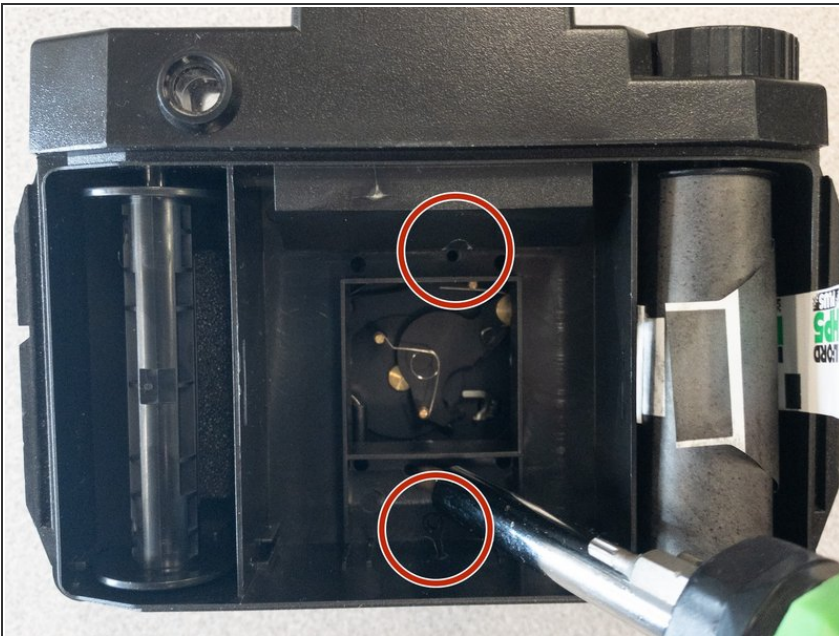
- Remove the plastic from the spade terminal.

Step 7



- Place hot glue at the bottom of the spade terminal.
- Place the spade terminal in the small hole underneath the shutter.
- Point the spade terminal horizontally, facing the wire that leads back to the camera.

Step 8



- Screw the shutter piece back into place using a Phillips #00 screwdriver.

Step 9



- Return the back of the camera into place.

You've now learned the following:

- How to disassemble and reassemble a Holga 120N camera
- How to add a spade terminal as a blocker

The spade terminal will stop the overextended shutter. Enjoy taking pictures!