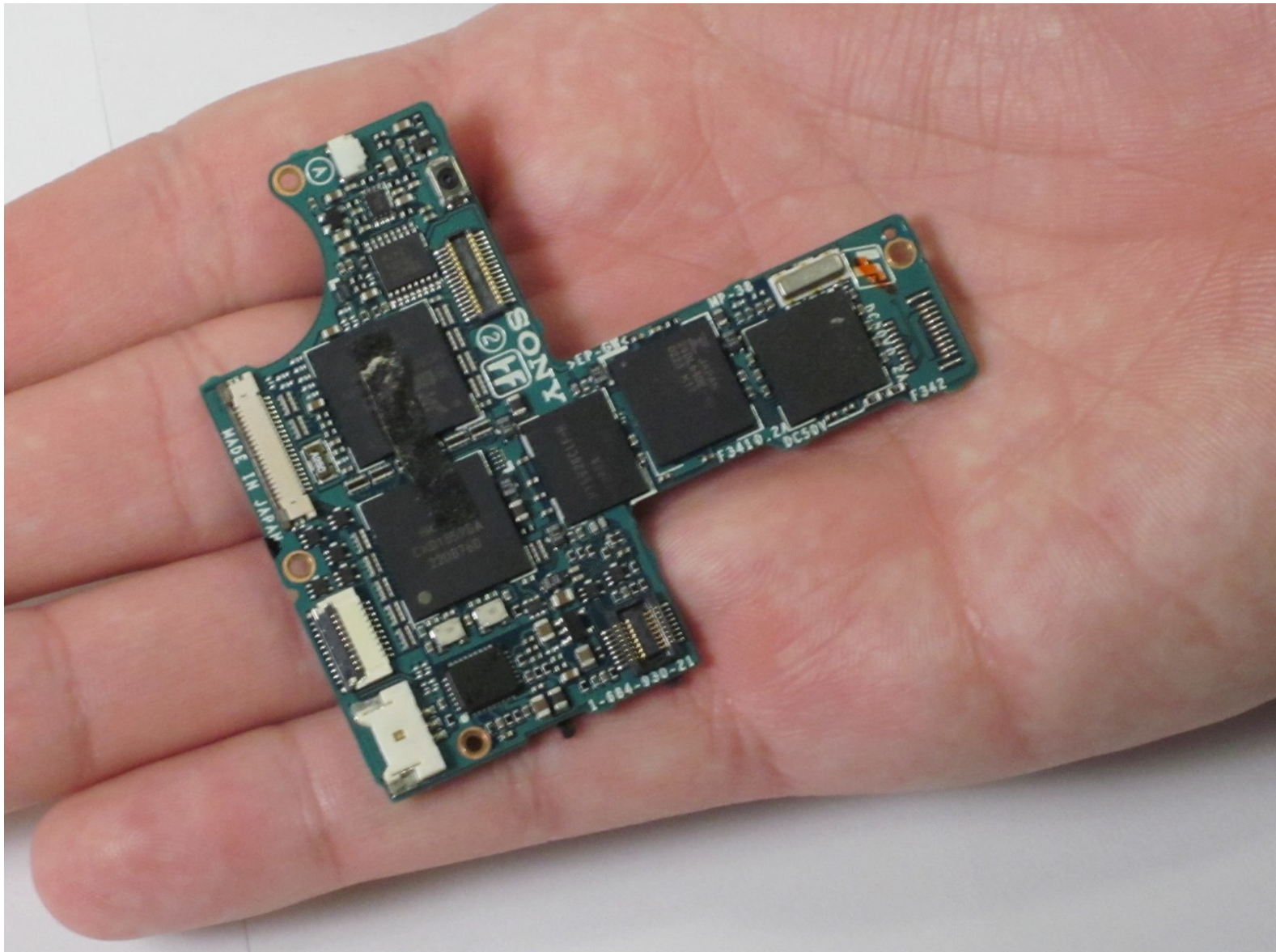




# Sony Clie PEG-NR70 Motherboard Replacement

Install a new motherboard in your Sony Clie.

Written By: Daniel Soski



# INTRODUCTION

Installing a new motherboard involves removing the other components. Once this is done, removing the motherboard involves unscrewing the board from the housing and disconnecting various cables and wires.



## TOOLS:

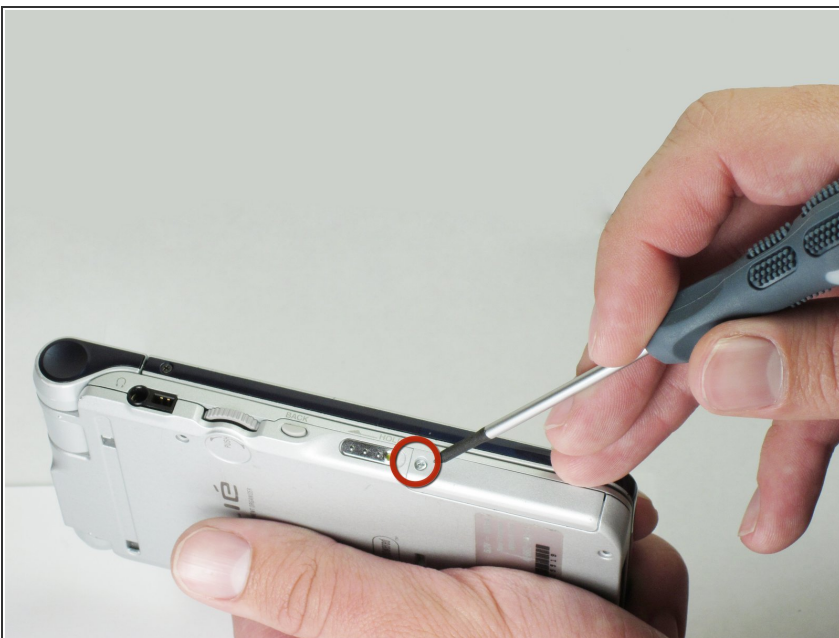
- [Phillips #00 Screwdriver](#) (1)
  - [Tweezers](#) (1)
-

## Step 1 — The Case



- Unscrew the 1.9mm screw located at the top of the device with a Phillips #00 screwdriver.
- ⓘ It may be helpful to set up a piece of paper to keep track of where removed screws came from.

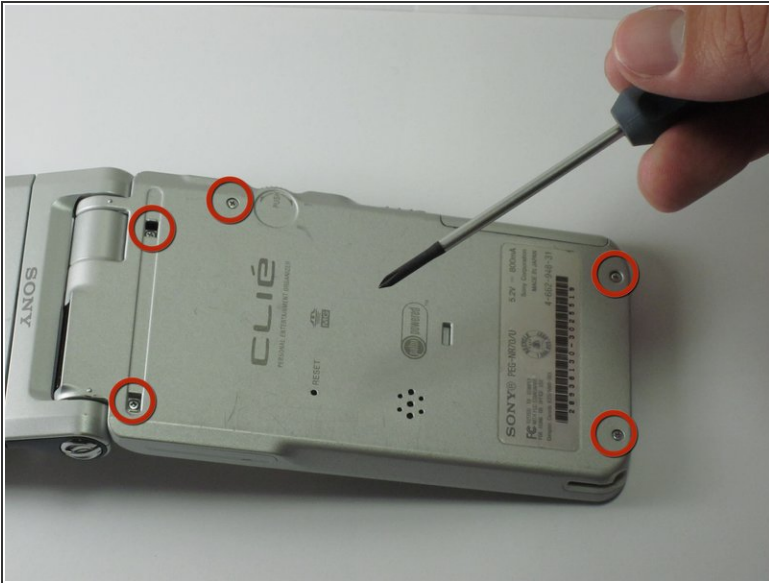
## Step 2



- Unscrew the 2.5mm screw located on the left side of the device with a Phillips #00 screwdriver.



### Step 3



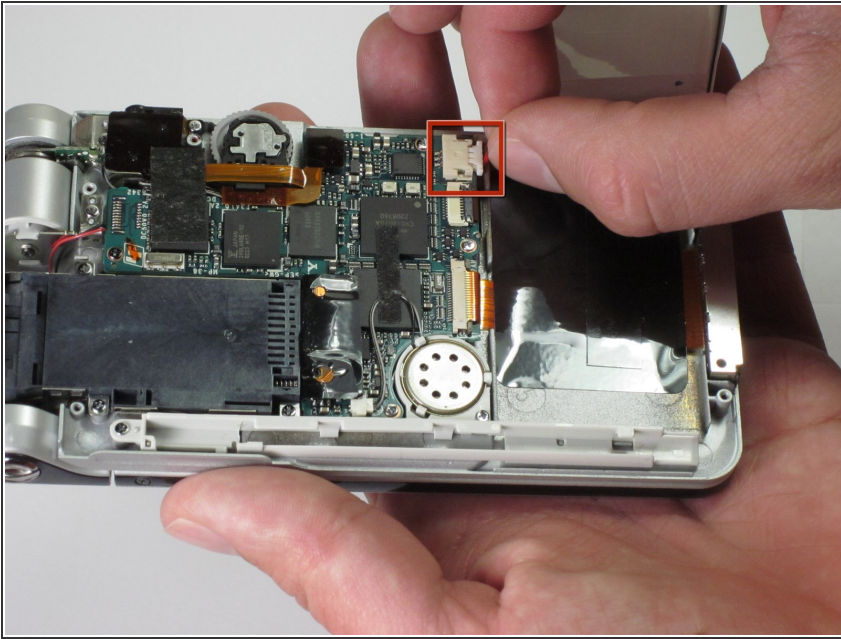
- Unscrew the five 2.5mm screws on the back panel with a Phillips #00 screwdriver.
- Remove the back panel by lifting it away with your hands.

### Step 4 — Battery Pack



- Pull up on the black tab on the battery pack to reveal the power cord.

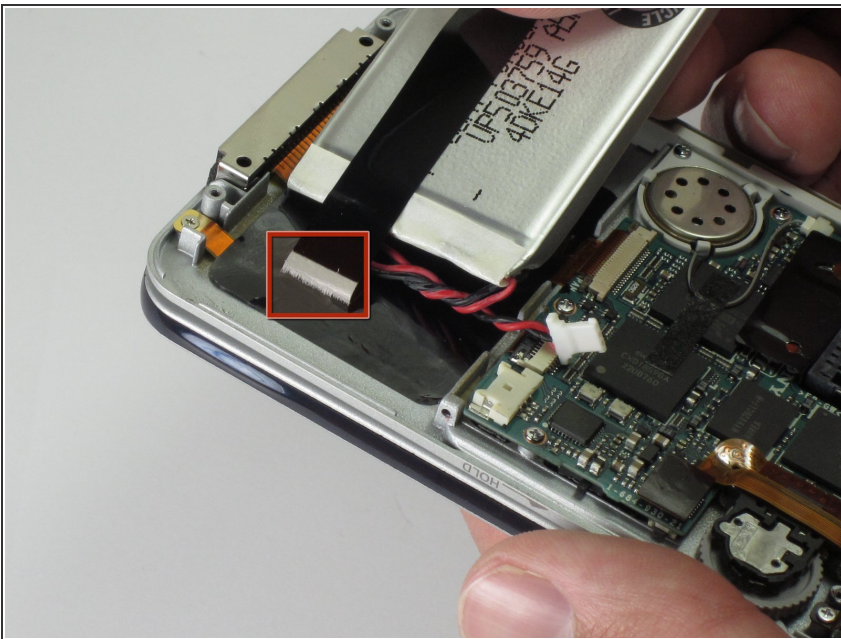
## Step 5



- Disconnect the battery pack from the motherboard by unplugging the power cables. Gently pull the wire toward the bottom of the device.

⚠ Be careful to not tear the cables!  
They are very thin.

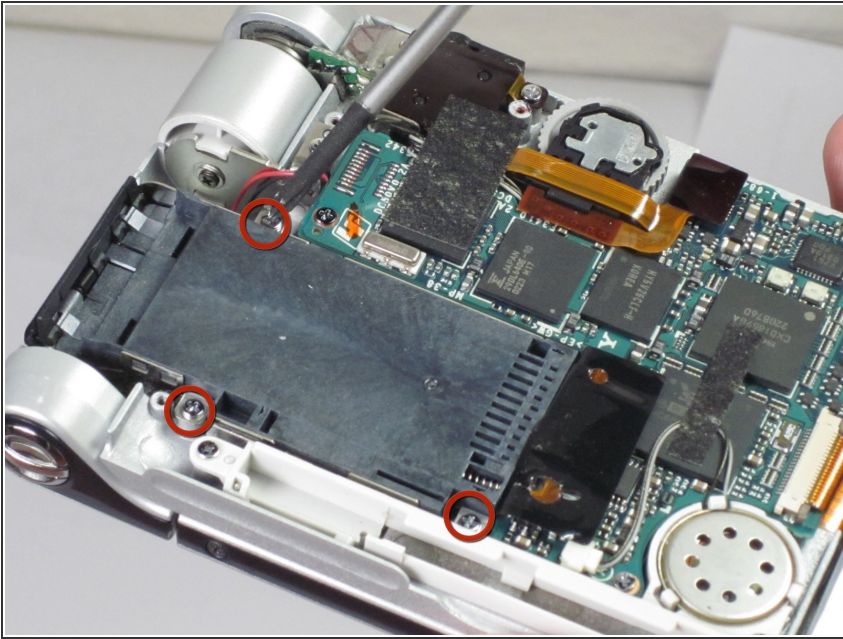
## Step 6



- Gently peel back the adhesive to completely disconnect the battery pack from device.

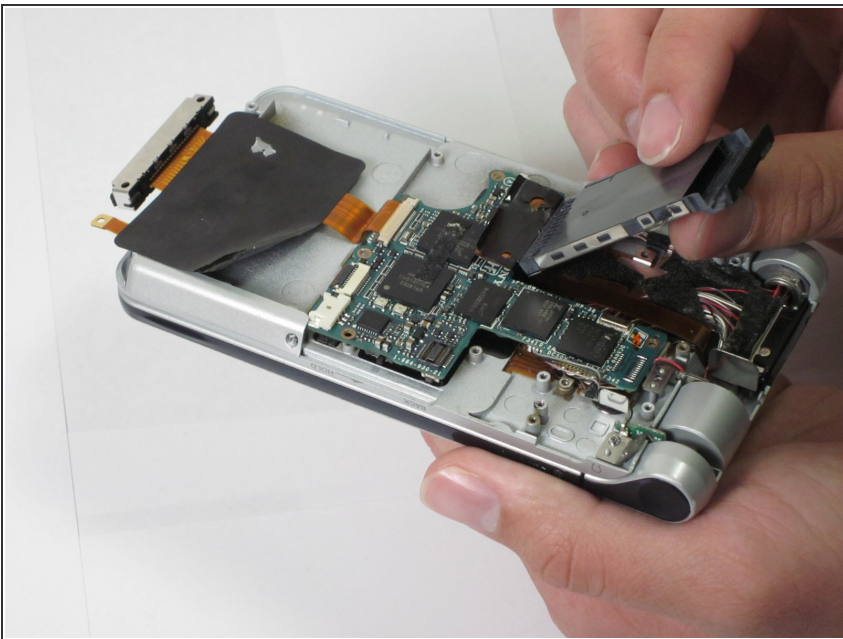


## Step 7 — Memory Module



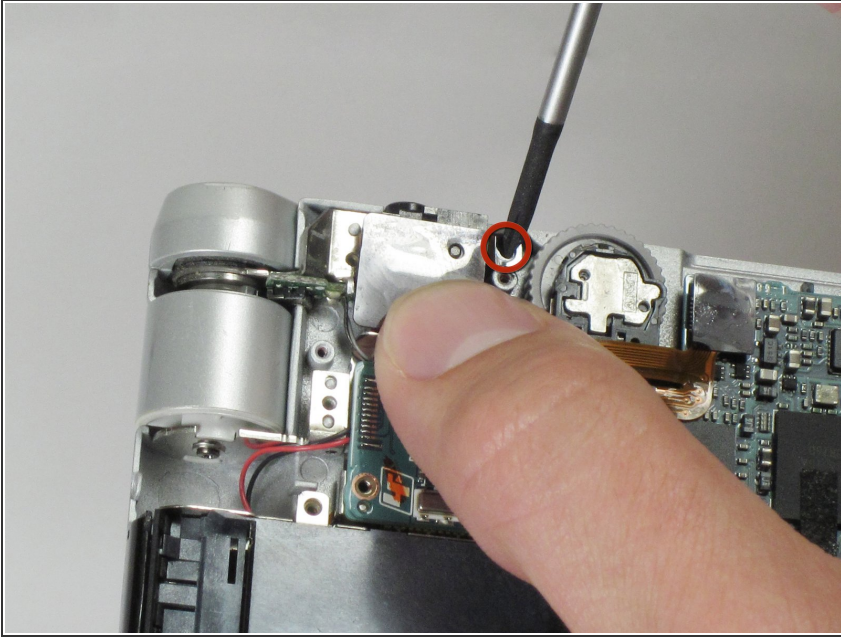
- Holding the memory module in place, unscrew the three 0.9mm screws with a Phillips #00 screwdriver.

## Step 8



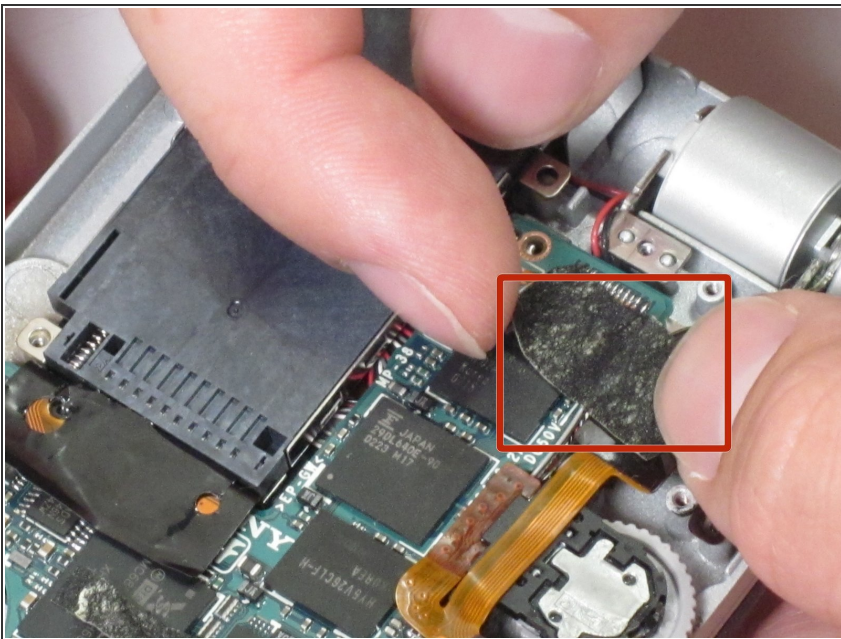
- Lightly grab the memory module and pull it upwards.
- ⓘ Make sure you grab the end closest to the edge of the device. You may have to wiggle the module a bit to get it to come free.

## Step 9 — Audio Module



- Unscrew the 2.5mm screw on the top portion of the audio module with a Phillips #00 screwdriver.

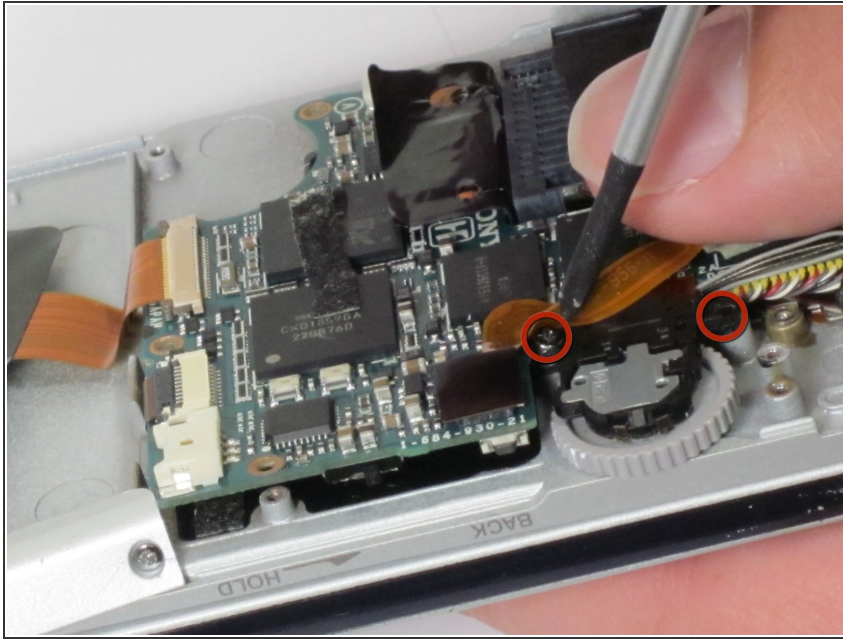
## Step 10



- Remove the tape that is holding the module down.

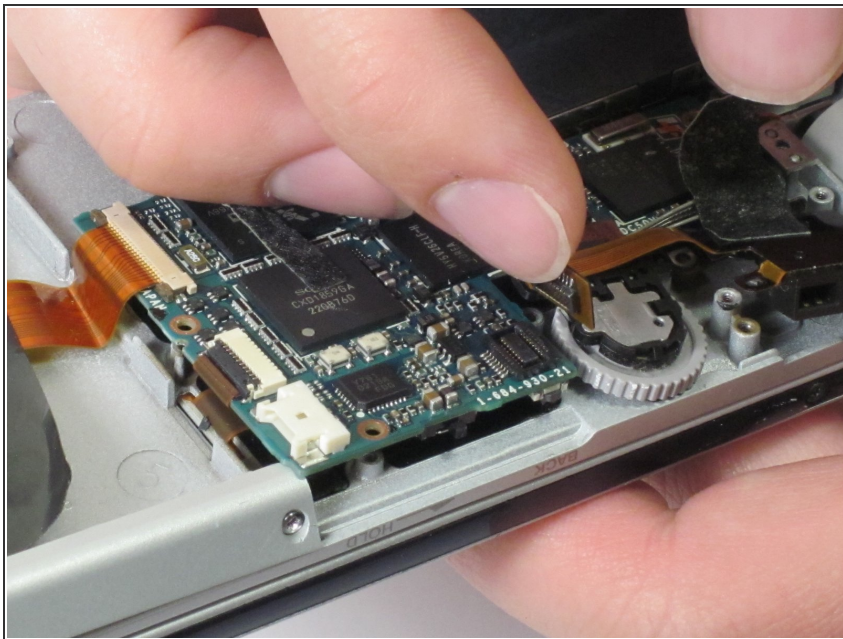


## Step 11



- Lift up the orange ribbon cable and unscrew the two 2.5mm screws located at the corners of the audio module with a Phillips #00 screwdriver.

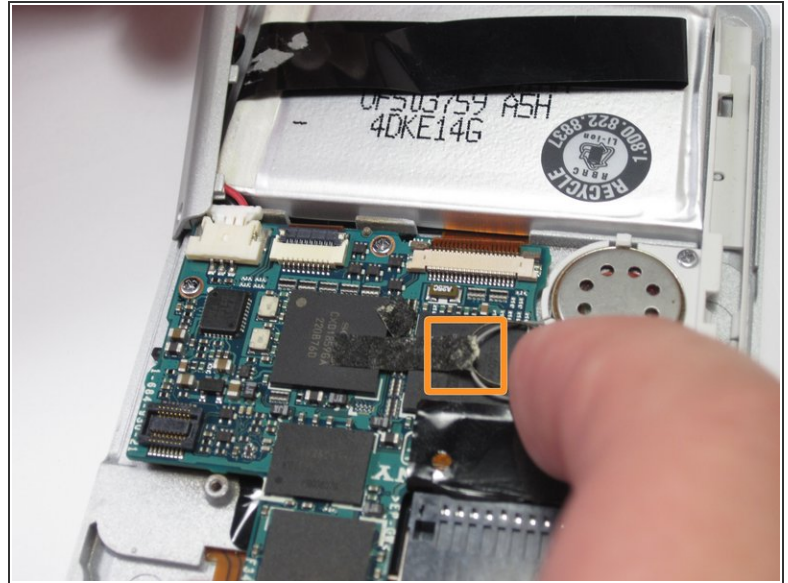
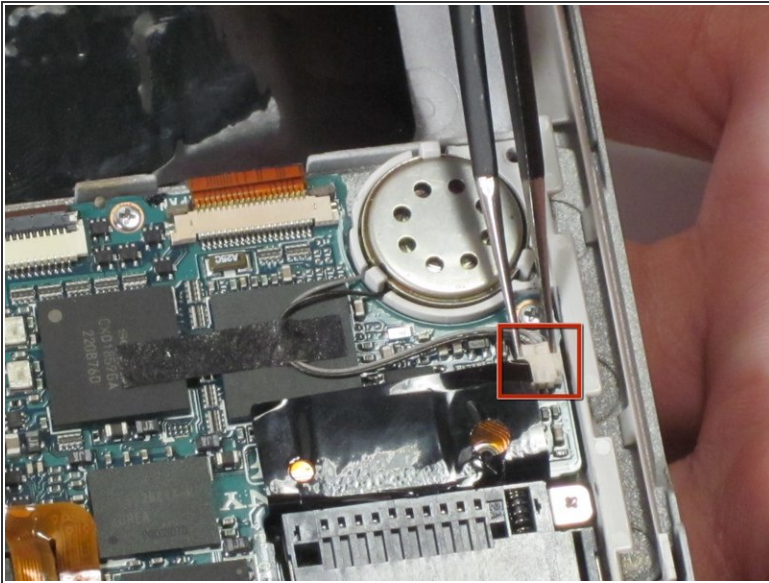
## Step 12



- Unplug the audio module from the motherboard by disconnecting the wires by lifting the orange wire up.



## Step 13 — Speaker Rail

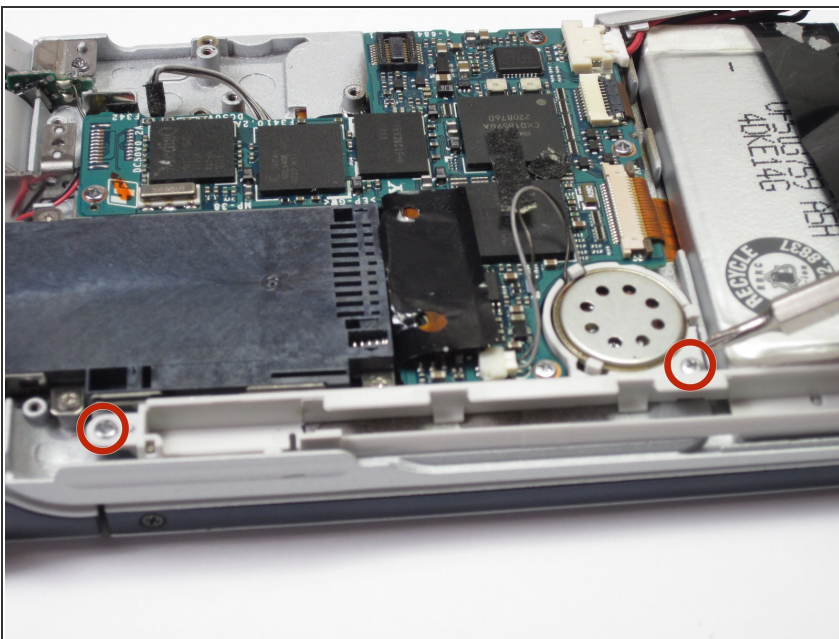


- Use tweezers to unplug the speaker wire from the motherboard by pulling the plug (not the wires) down towards the speaker.

⚠ Be careful not to tear the speaker wires! They are very thin.

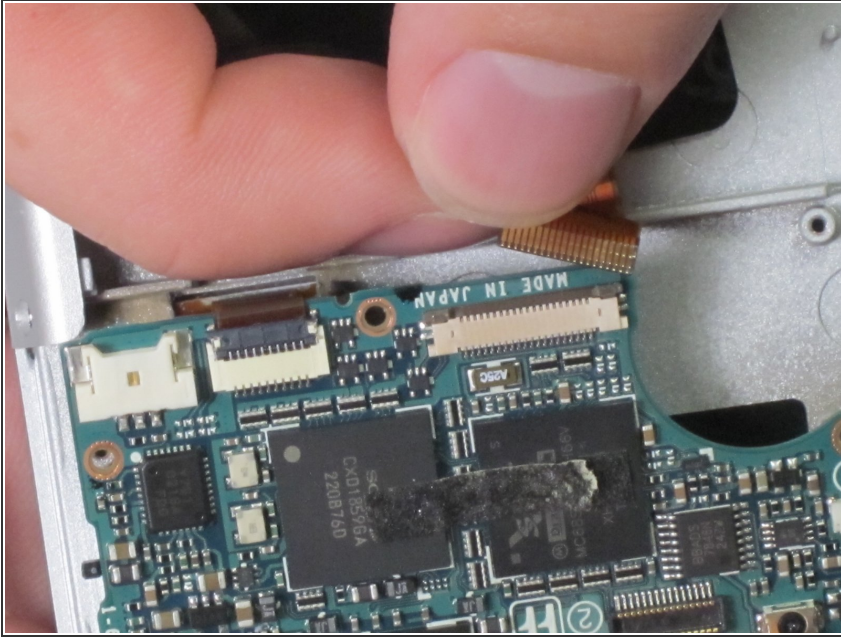
- Remove the tape holding speaker wire by peeling it away.

## Step 14



- Holding down the speaker rail unscrew the two 2.5mm screws with a Phillips #00 screwdriver.
- Remove the speaker rail vertically from the device.

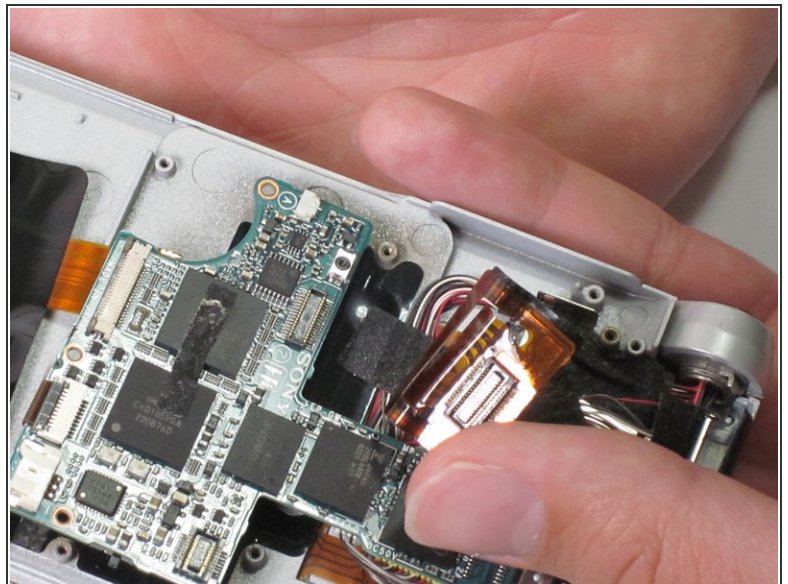
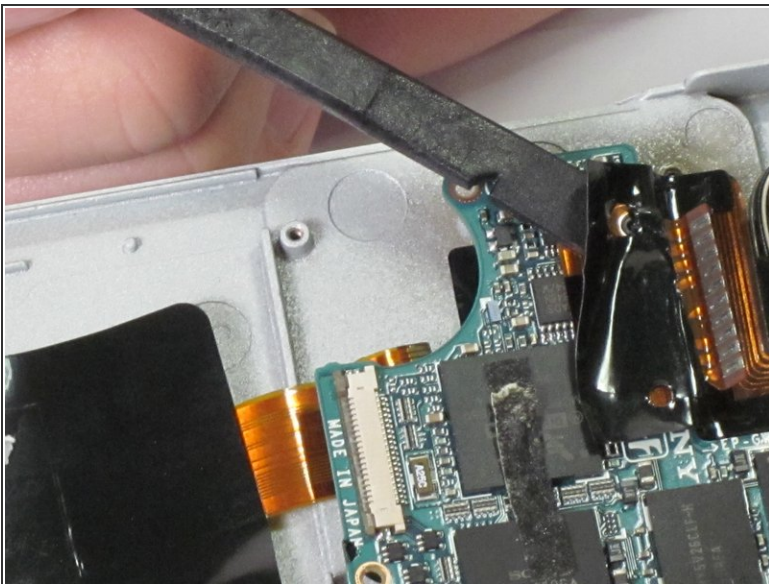
## Step 15 — Motherboard



- Unplug the ribbon cable found near the bottom of the motherboard by pulling it towards the bottom of the device.

**⚠ Be careful not to tear the plug! It is very thin.**

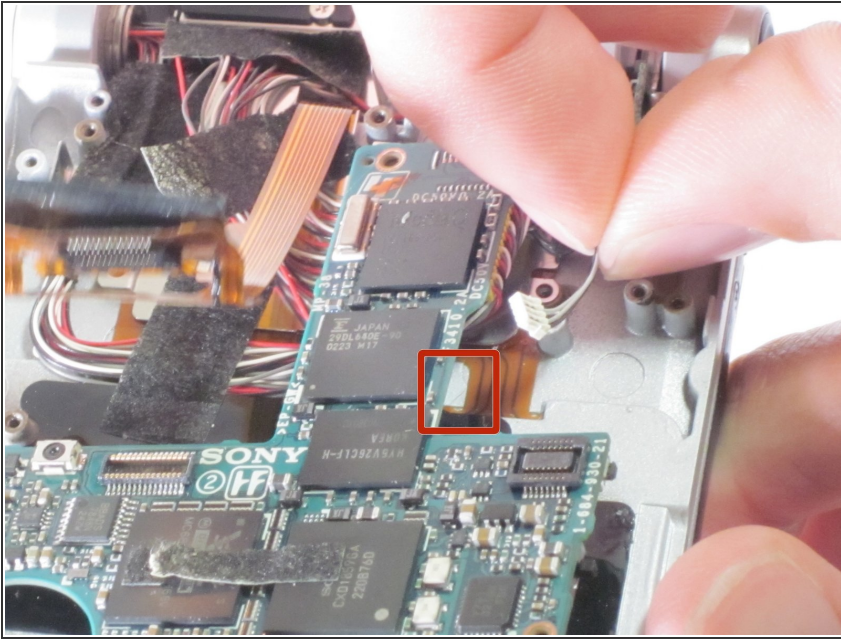
## Step 16



- Unplug the ribbon cable connected at the bottom of the memory module by prying it up with a spudger.



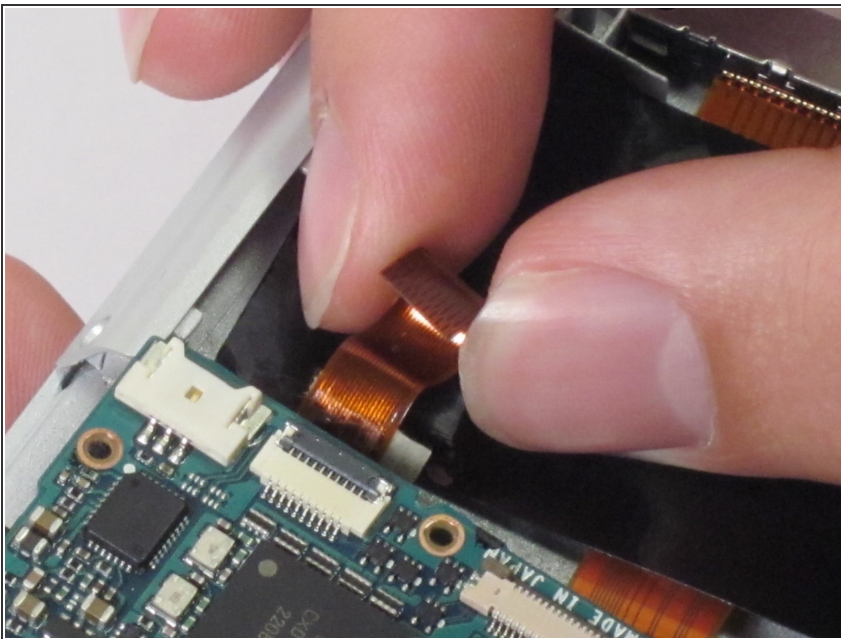
## Step 17



- Unplug the wires found underneath the right side of the "stem" of the motherboard by pulling gently.

⚠ Be careful not to tear the wires!  
They are very thin.

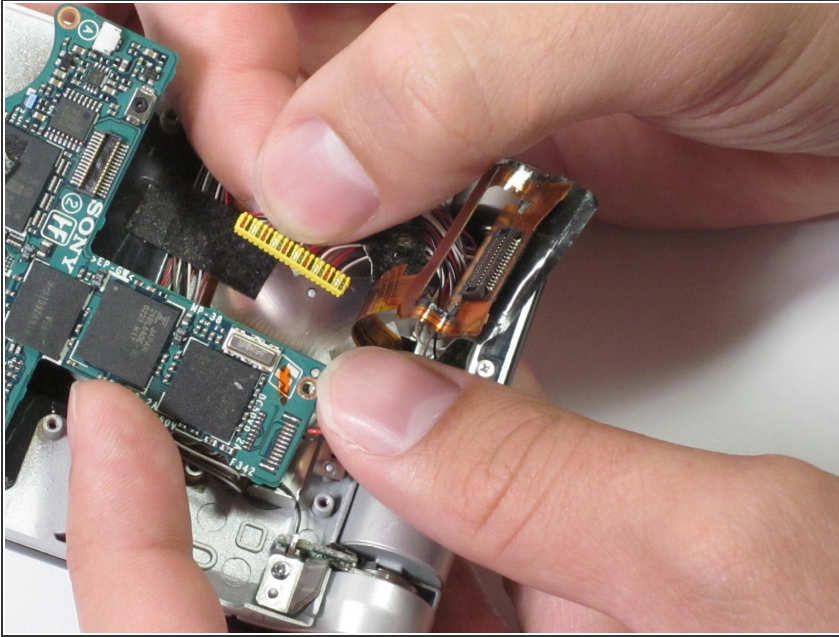
## Step 18



- Lift up the black locking tab holding the ribbon cable in place.
- Gently pull on the ribbon cable to remove it from the ZIF connector.

⚠ Be careful not to tear the ribbon cable! It is very thin.

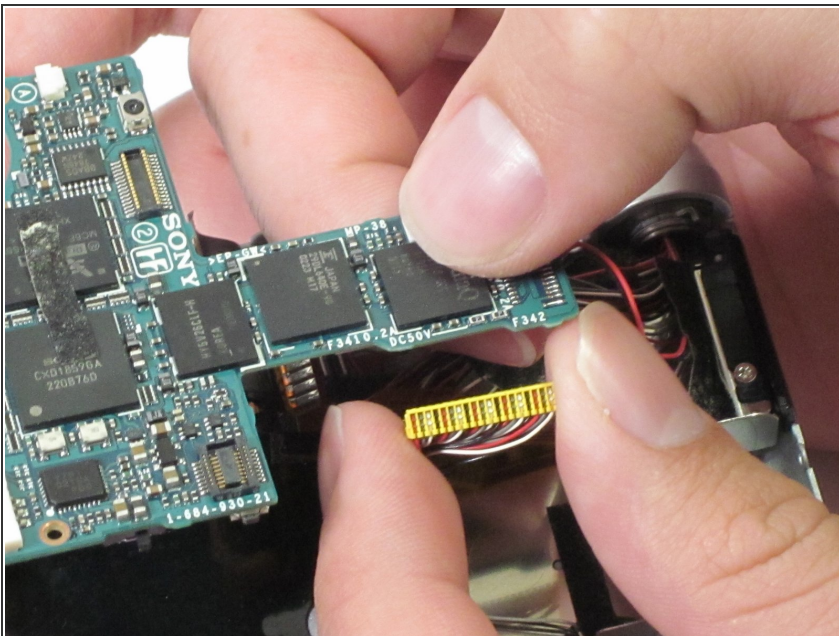
## Step 19



- Unplug the yellow connector from the underside of the left side of the motherboard by pulling gently.

⚠ Be careful not to tear the wires!  
They are very thin.

## Step 20

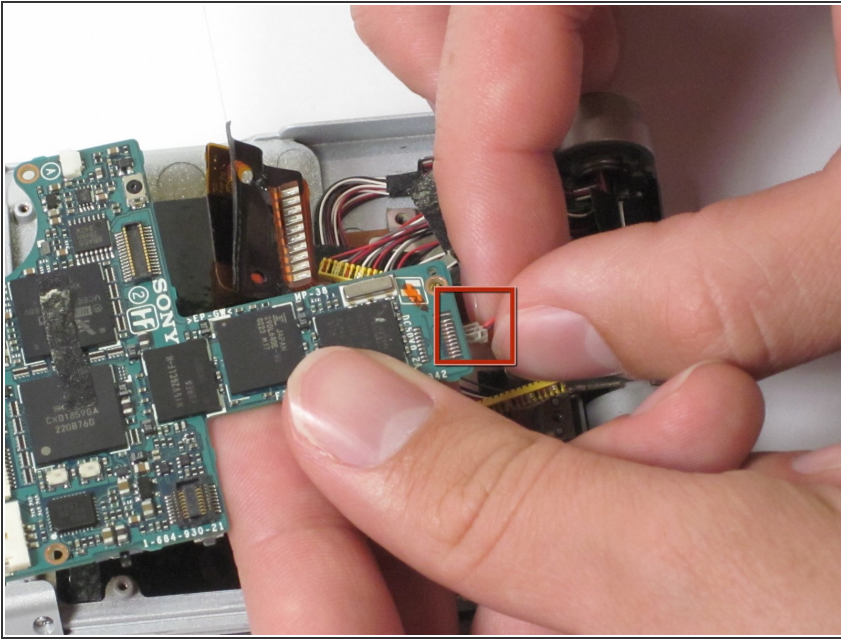


- Unplug the second yellow connector from the underside of the right side of the motherboard by pulling gently.

⚠ Be careful not to tear the wires!  
They are very thin.



## Step 21



- Unplug the last set of wires from underneath the top of the motherboard.
- ⚠ Be careful not to tear the wires! They are very thin.
- The motherboard should be loose now. You should be able to wiggle it free from the housing.

To reassemble your device, follow these instructions in reverse order.