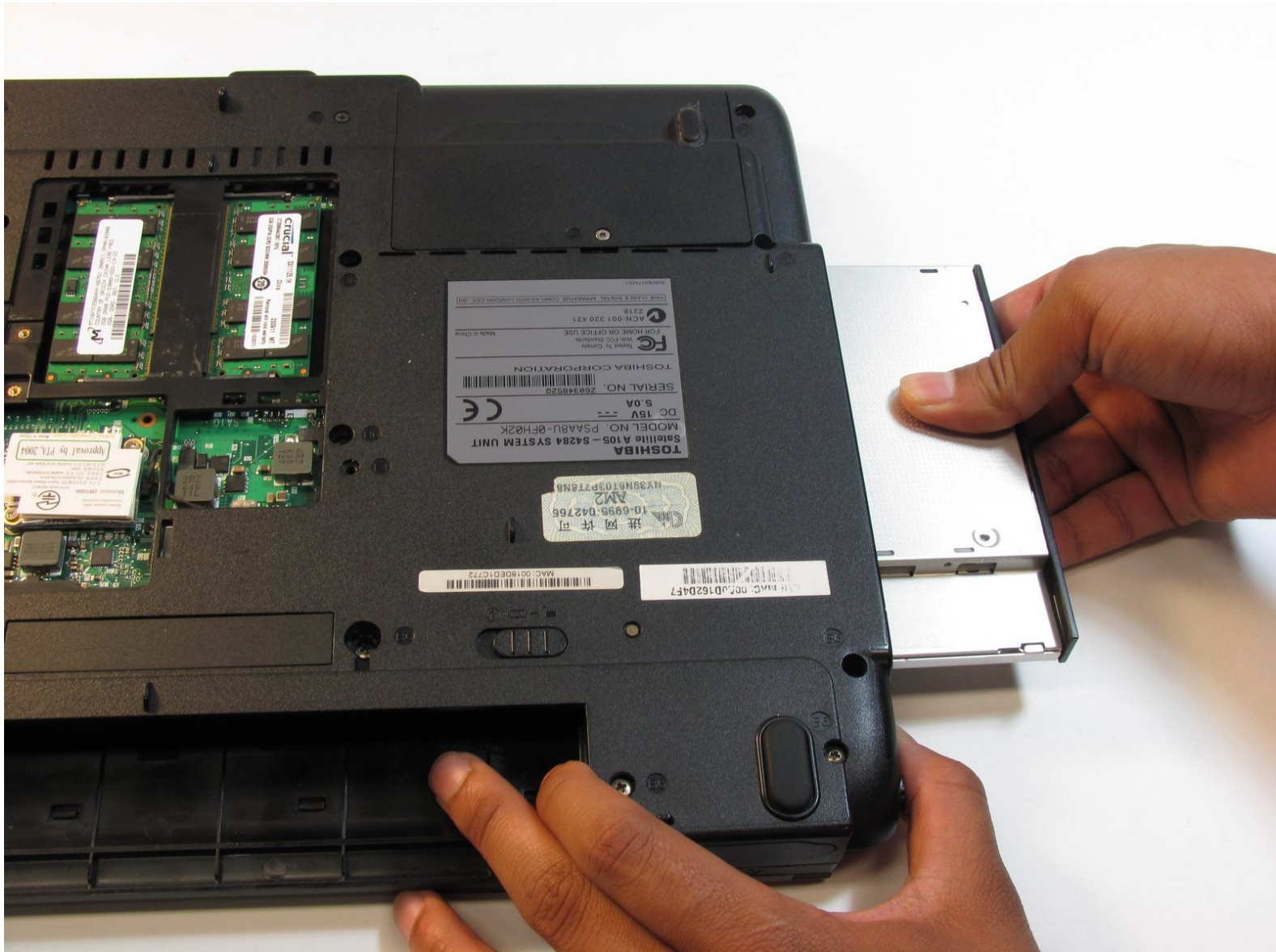




Toshiba Satellite A105-S4284 Disc Drive Replacement

How to Replace or Install a new Disc Drive for the Toshiba Satellite A105-S4284

Written By: pfedigan



INTRODUCTION

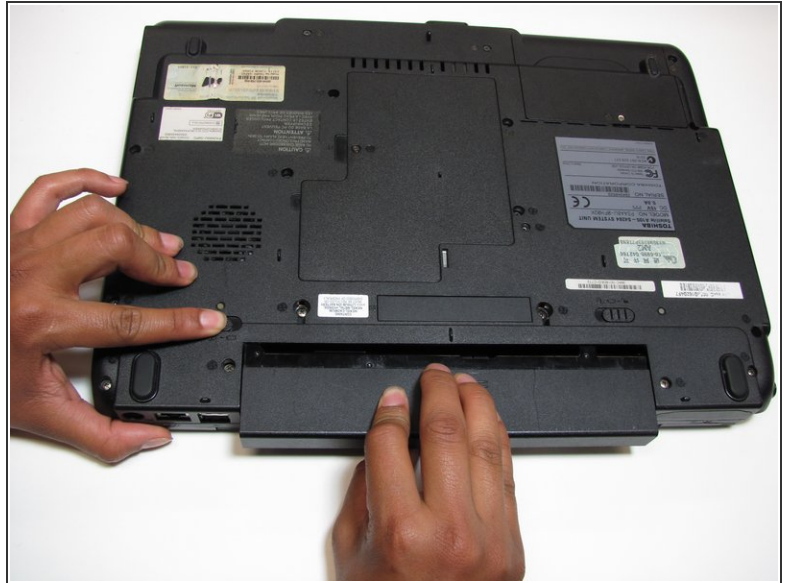
If your CDs or DVDs are not running correctly or at all on your computer, then it is either due to the disc drive being dirty, loose parts and/or broken. This guide will show the user how to safely remove the disc drive.




TOOLS:

- [Phillips #1 Screwdriver](#) (1)
 - [Phillips #00 Screwdriver](#) (1)
 - [iFixit Opening Tools](#) (1)
-

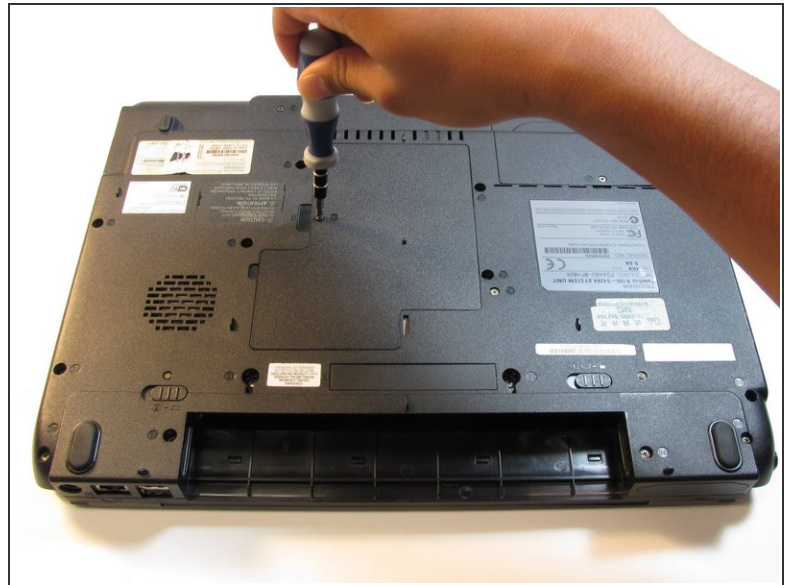
Step 1 — Battery



 Make sure your computer is turned off and the computer is not plugged in.

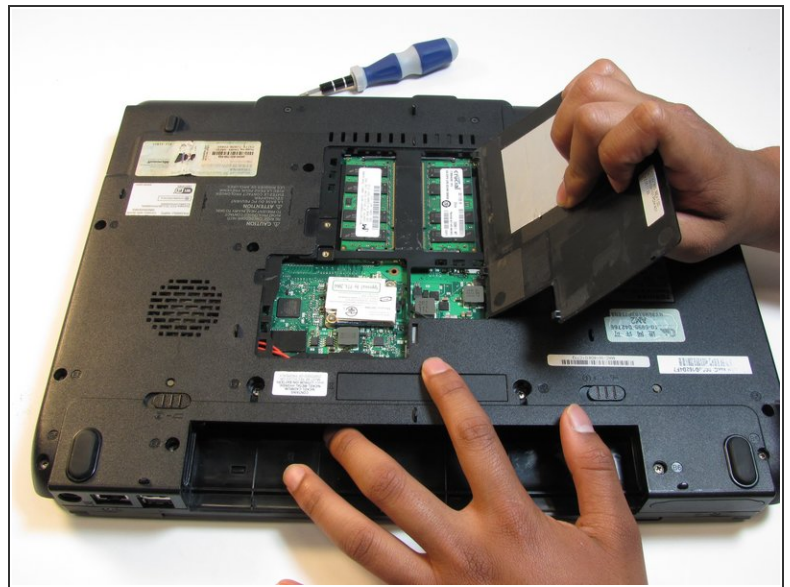
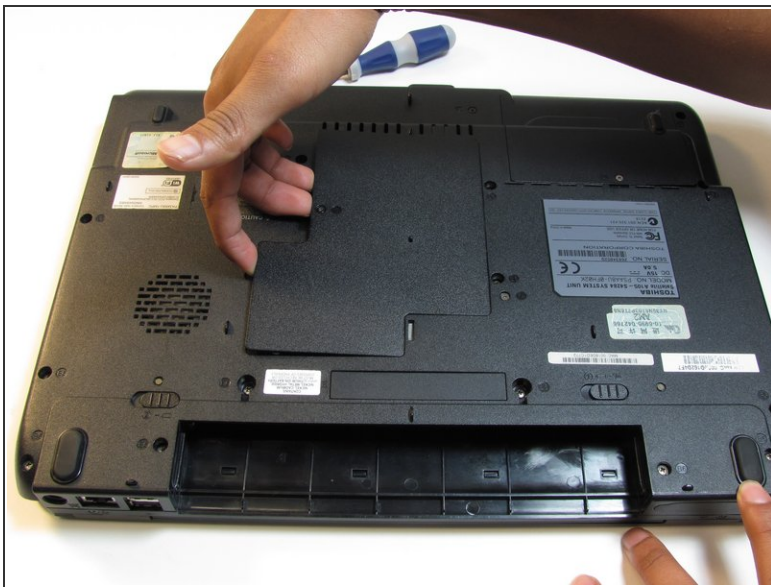
- Turn your laptop upside down, and slide the right release tab outward.
- Using your left hand, hold the left release tab towards the left side and then pull the battery out.

Step 2 — Disc Drive



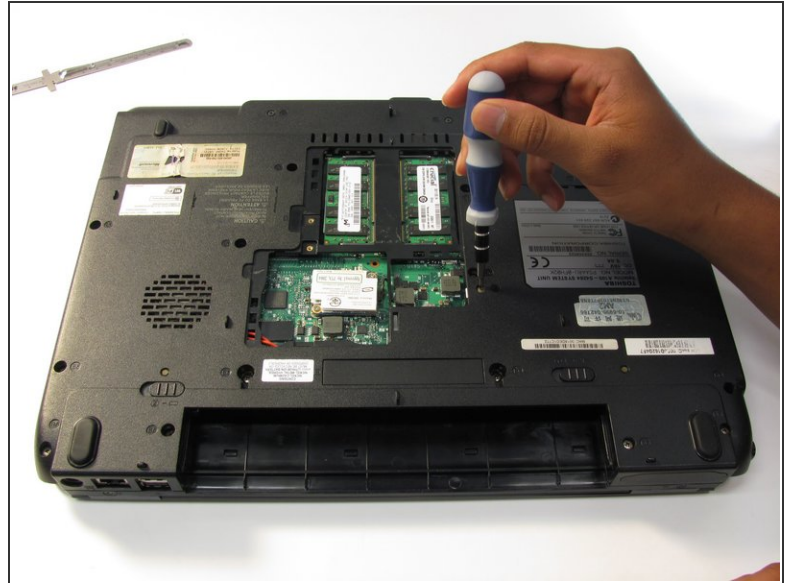
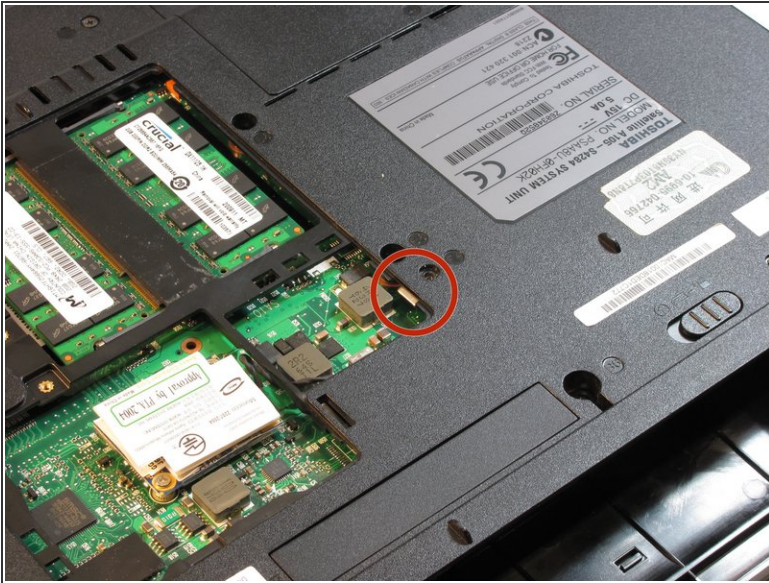
- Loosen the screw located on the cover of the RAM using Phillips #1 screwdriver.
- ⓘ You will not be able to remove the screw from the panel as it is designed to stay in the panel.

Step 3



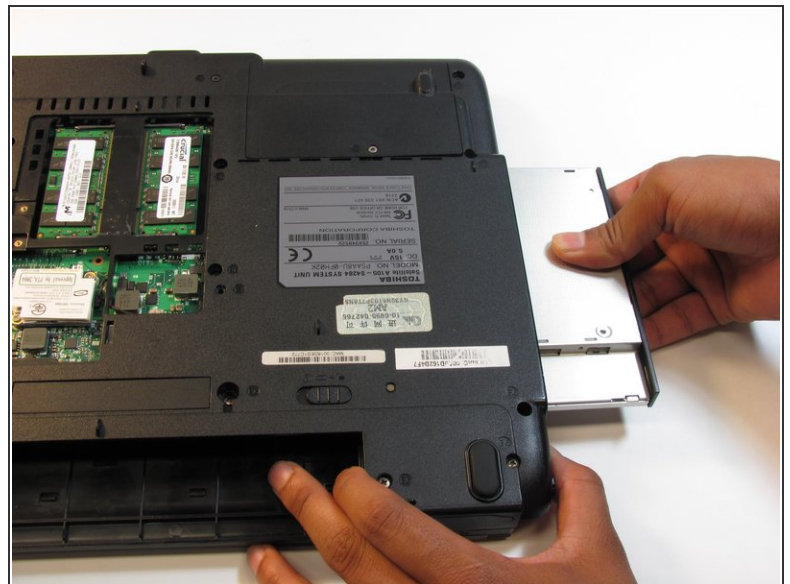
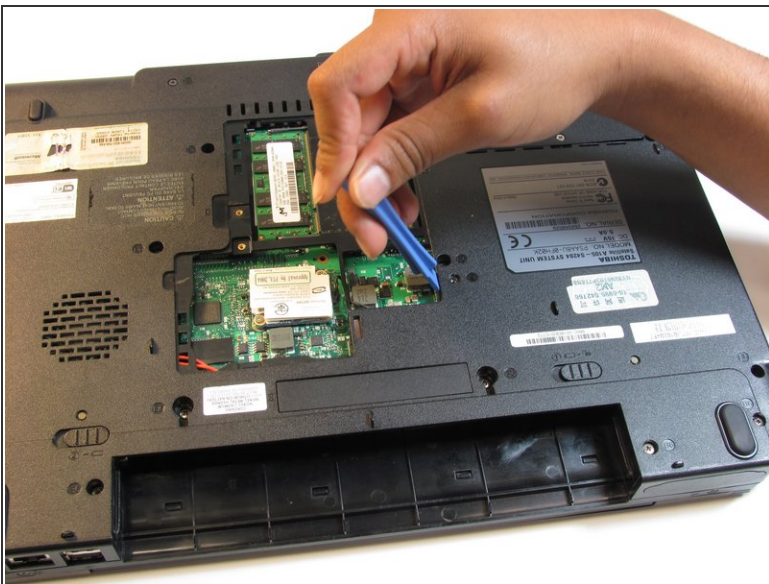
- With your fingers, carefully remove the middle panel by lifting the edge with the indent.

Step 4



- Remove the 4.0 mm screw above the small metal tab with a Phillips 00 screwdriver.

Step 5



- Push down on the metal tab under the cover with the plastic opening tool and push the disc drive partially out.
- Grab the drive and pull it out of the laptop.

To reassemble your device, follow these instructions in reverse order.