



DeLonghi ESAM xxxx - (Different Types)

Replace timing belt

It rarely happens, but if the timing belt is...

Written By: VauWeh



INTRODUCTION

It rarely happens, but if the timing belt is broken, it can be replaced quite easily.

Note: It is generally sufficient to remove the base plate. However, removing the side panels is not difficult and you will then have better access to the engine.



TOOLS:

- [TR15 Torx Security Screwdriver](#) (1)
- [Phillips Screwdriver #2, 4-in](#) (1)



PARTS:

- [New Item](#) (1)

Step 1 — Preparations



 **Pull the plug!**

- Remove the drip tray, the water tank and the pulp container.

Step 2 — Unscrew the rear panel



- The rear panel and side panels are attached with six phillips screws #2. Screw them out.

Step 3 — Remove right side panel



- Slide the right side panel about 2 cm to the back.
- Then solve it.

Step 4 — Remove left side panel



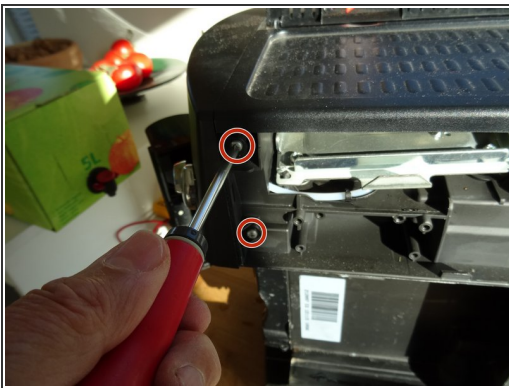
- The left side is a bit stuck. Place a plastic opening tool in the gap between the front and left side panel above the opening for the water tank. Lift the gap slightly larger.
- Then place the tool in the gap between the front and left side panel under the opening for the water tank. Increase the gap and push the side part about 2 cm to the rear.
- Lift out the left side piece.

Step 5 — Remove rear panel



- Take out the rear panel.

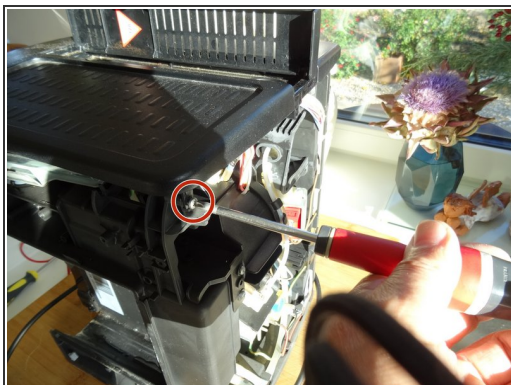
Step 6 — Unscrew top cover



- The front panel is secured with four PH2 Phillips screws, two left and one right each. Turn it out.
- Use a plastic opening tool to lever off the steam tap.
- Carefully pull the front panel about 1 cm forward so that there is a gap between the top cover and the front panel,

⚠ Do not pull the front panel too far, it is still attached with different hoses and cables.

Step 7 — Remove top cover



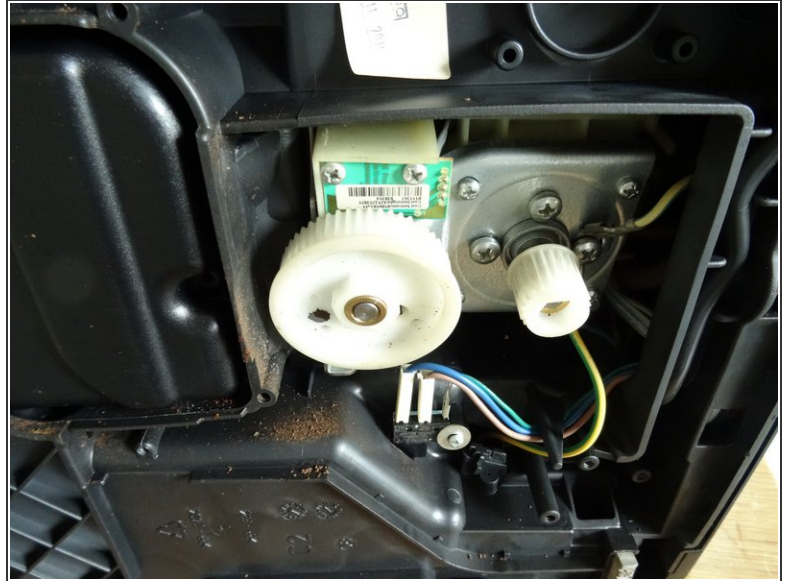
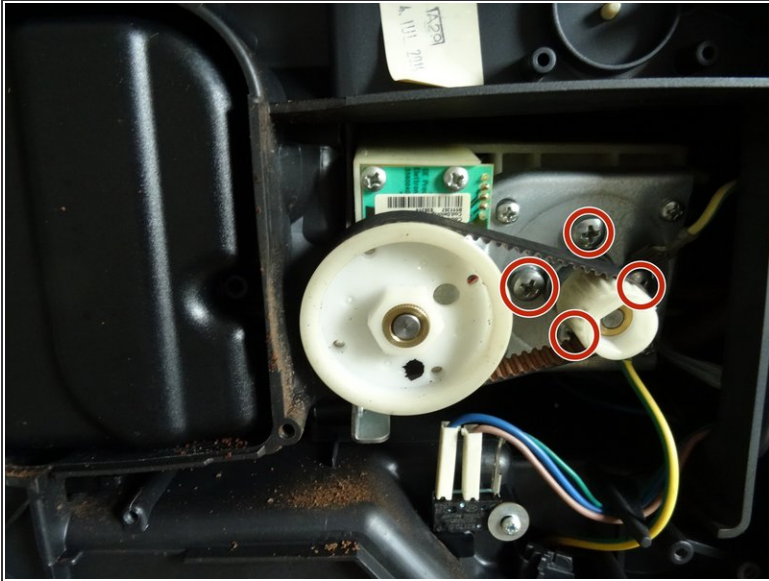
- Two Phillips screws PH2 hold the lid at the back. Turn it out.
- Lift the lid upwards.


Step 8 — timing belt



- This is what the timing belt looks like.
- Lay the machine on its side.
- The bottom panel is secured with five Torx TR15 security screws. turn them out.
- Take off the bottom plate. The toothed belt becomes visible.

Step 9



 It's easier if you loosen the motor.

- Remove the four Phillips screws securing the motor. (Two are obscured in the picture). Loosen the motor and push it up a little.
- Lift off the timing belt.

Work the steps in reverse order to reassemble your device.