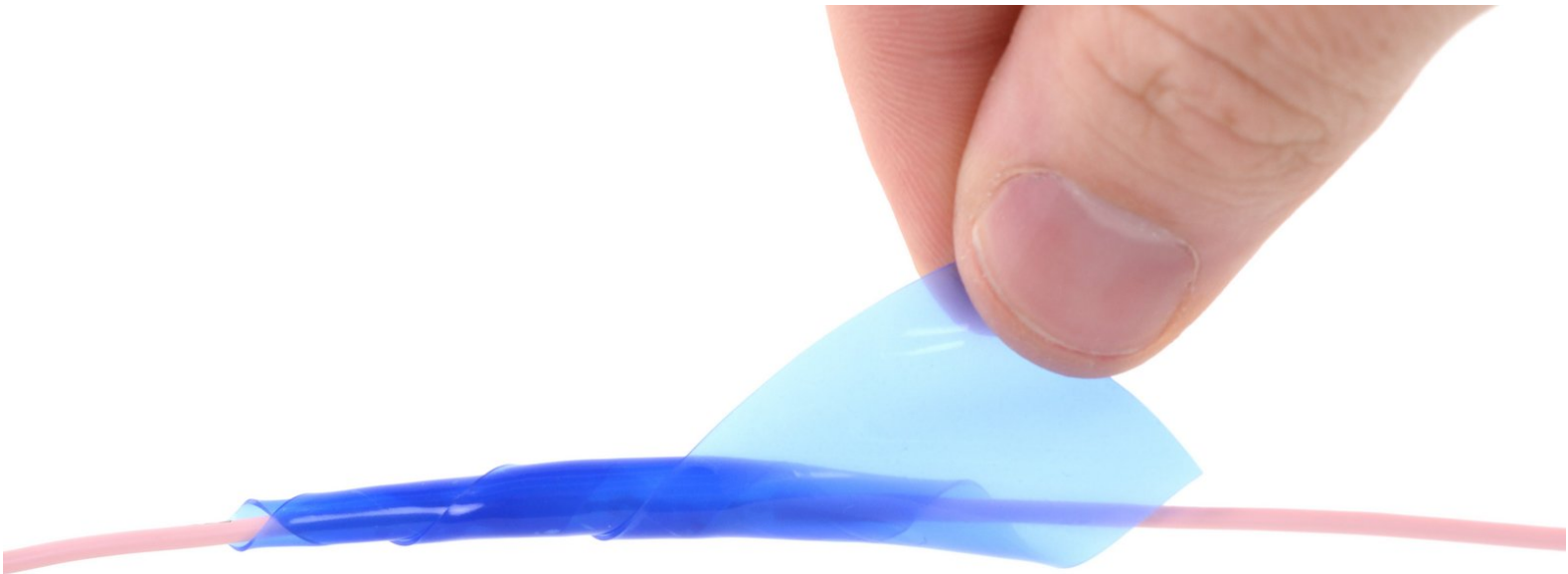




How to Apply Silicone Electrical Tape

How to apply silicone electrical tape.

Written By: Robert Boyd



INTRODUCTION

This guide shows how to apply silicone electrical tape to a wire splice and a tool handle.

The versatility of this waterproof silicone electrical tape doesn't end at insulating wire splices. Try it out in other applications such as adding rubbery grips to your tools, sealing leaky pipes, or securing wire bundles without any sticky, gooey adhesives.



TOOLS:

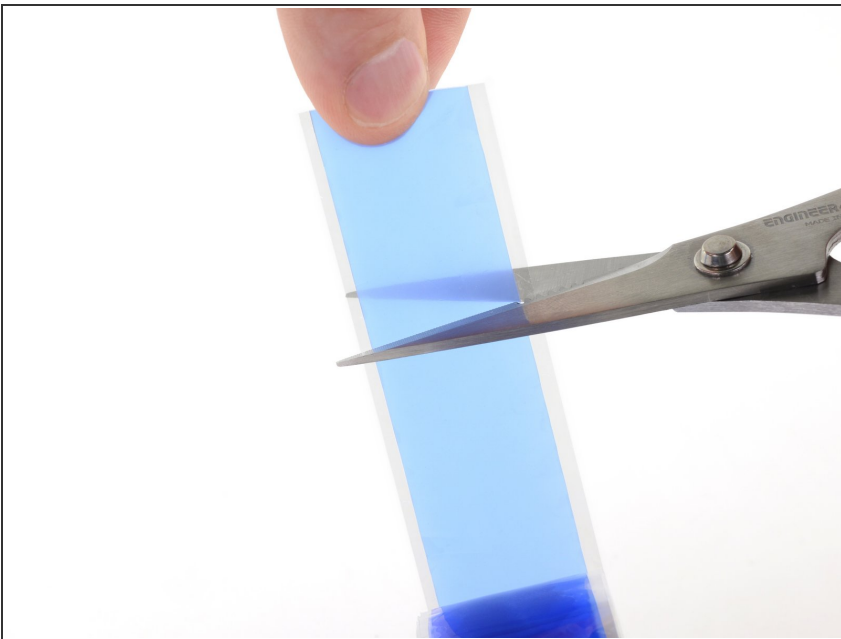
- [Silicone Electrical Tape](#) (1)
 - [Utility Scissors](#) (1)
-

Step 1 — Prepare the work surface



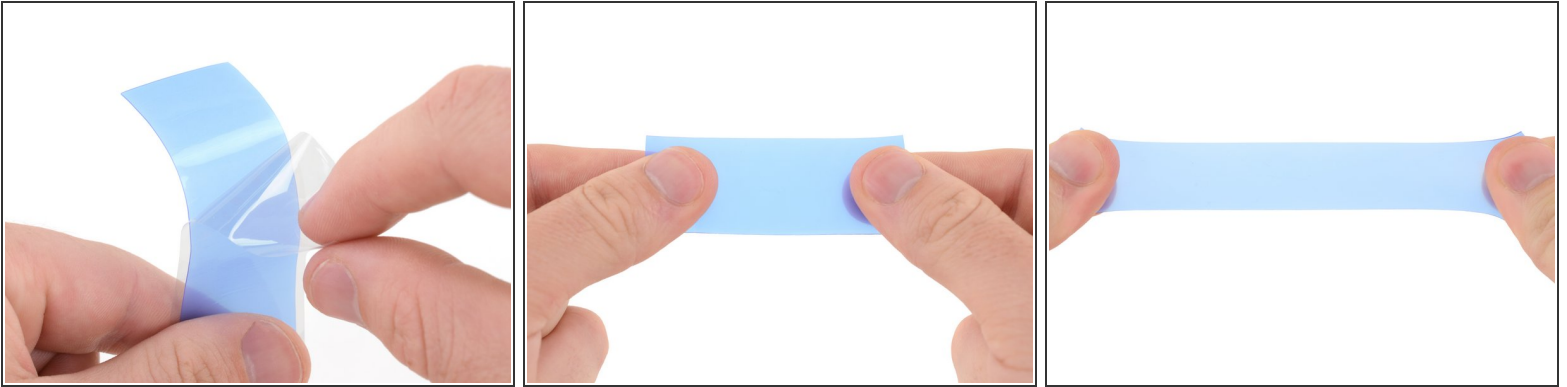
- i The next four steps show how to use the silicone electrical tape to insulate a wire splice.
- Clean your work surface and your hands before applying the silicone electrical tape.

Step 2 — Snip off a piece of tape



- Use scissors to cut off a small strip of silicone electrical tape.
- i Silicone electrical tape stretches several times its original length, so a short strip can cover more wire than you expect.
- i If you don't think you need a whole roll, check out our [precut strips](#) for small jobs or splicing on the go!

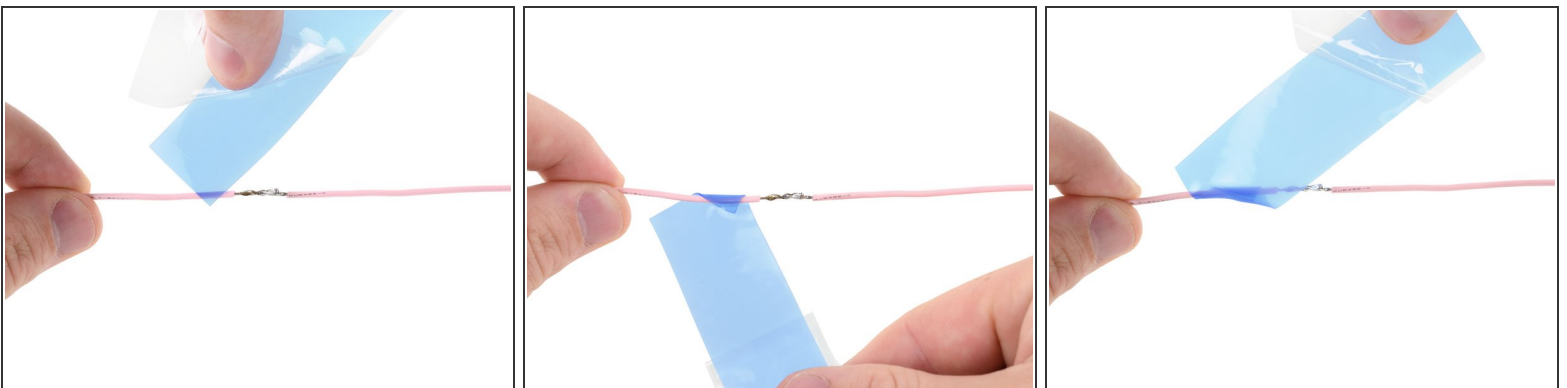
Step 3 — Remove part of the liner



- Remove an inch or two of the plastic liner before before wrapping the silicone electrical tape.

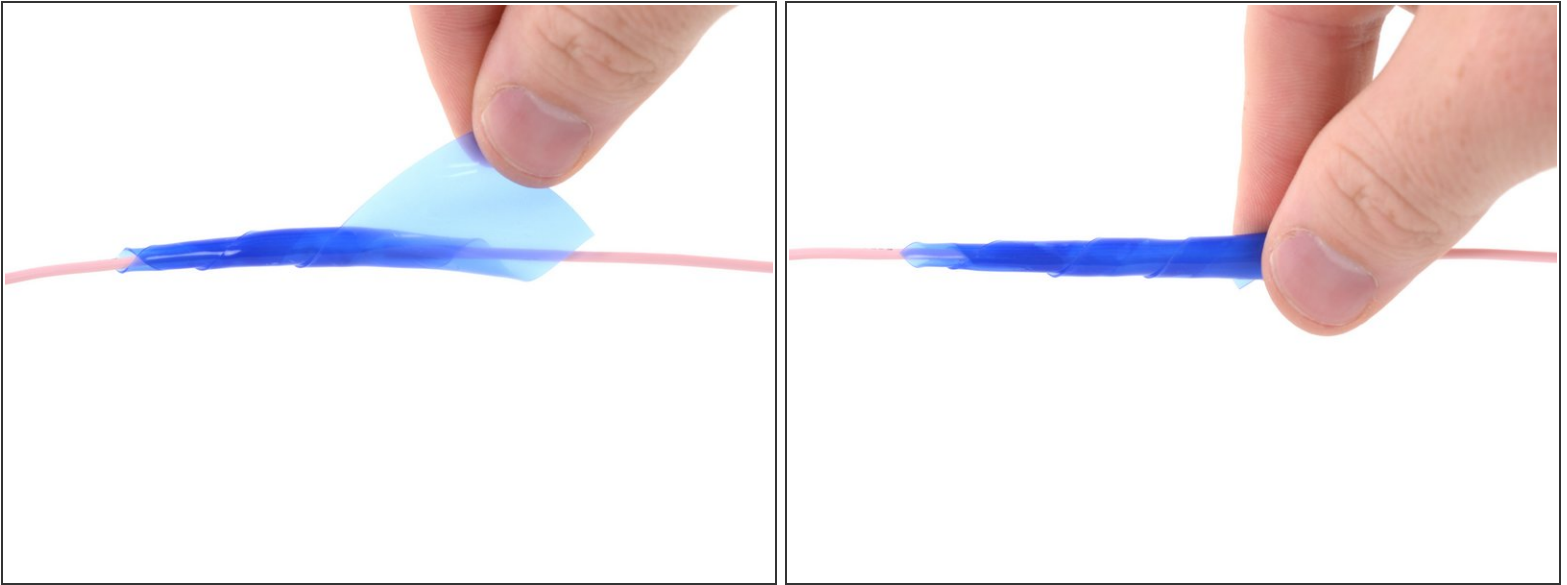
i The more the tape is stretched, the stronger and faster it will bond!

Step 4 — Apply the tape



- Wrap a corner of the silicone electrical tape to one side of the exposed section of wire.
 - i** The wrap should extend an inch past the exposed portion of wire on both sides to ensure complete insulation.
- Continue to wrap the tape around the wire while stretching the tape and removing the liner.
 - i** Overlap each layer by approximately 2/3 of the previous wrap for best results.

Step 5 — Finish the application



- Finish the application by completely overlapping the final wrap back on itself.
- Press down firmly on the end to set the silicone electrical tape.

Step 6 — How to create a grippy surface

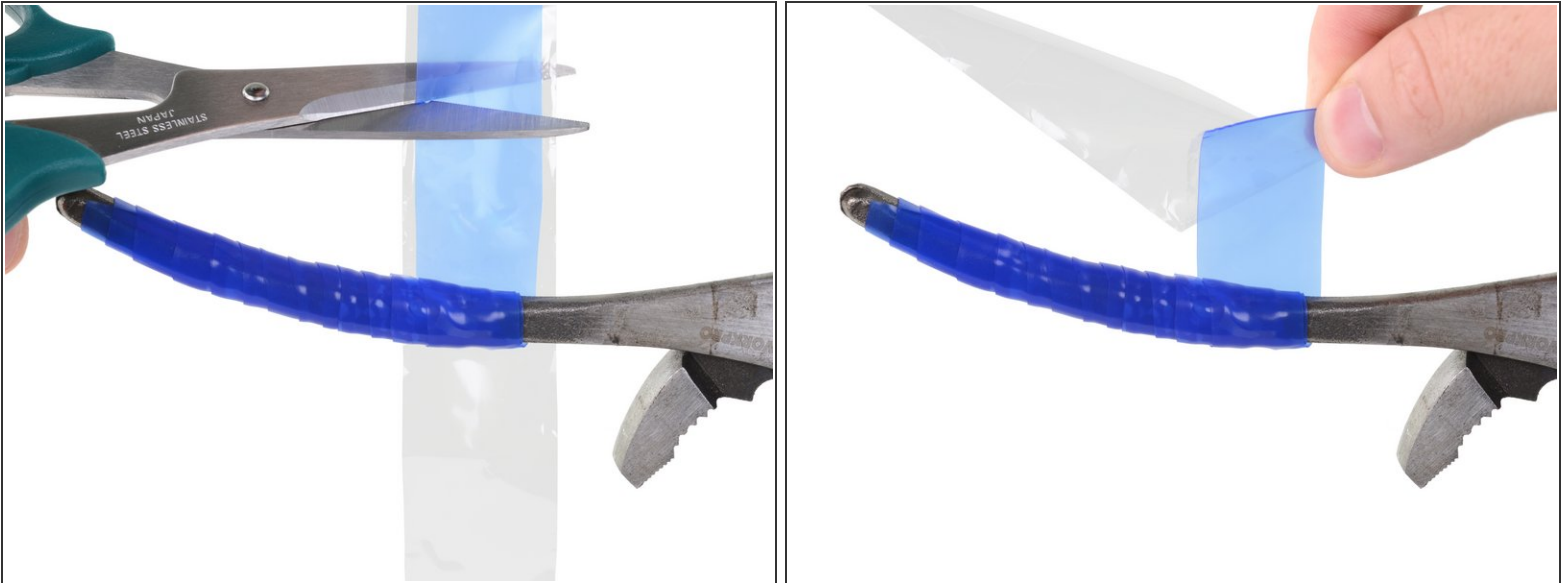


i The next three steps show how to use the tape to create a grippy surface.

- Clean the surface and your hands before applying the silicone electrical tape.
- Remove an inch or two of the plastic liner before before wrapping the silicone electrical tape.
- Press the end of the silicone electrical tape firmly on the handle.
- While stretching the tape, completely overlap the first wrap on itself to ensure a good bond.
- Continue to wrap the tape around the handle while stretching the tape and removing the liner.

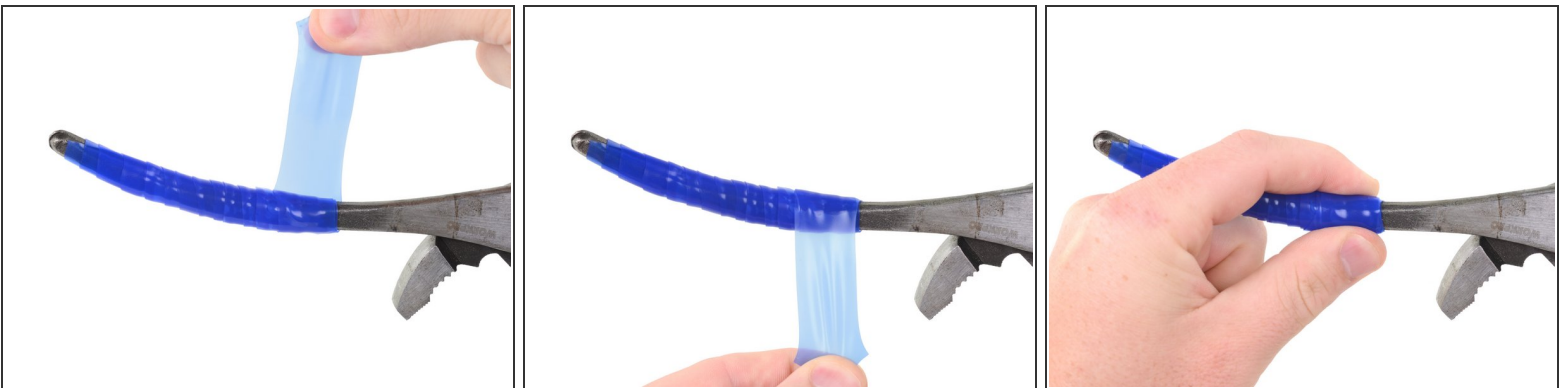
i Overlap each layer by approximately 2/3 of the previous wrap for best results.

Step 7



- Use scissors to cut the silicone electrical tape, leaving a small strip to finish wrapping the handle.
- Remove the liner completely.

Step 8 — Finish the wrap



- Finish the application by completely overlapping the final wrap back on itself.
- Press down firmly on the end to set the silicone electrical tape.