



Written By: Adriana Zwink



INTRODUCTION

Use this guide to replace a worn-out or dead battery in your OnePlus 8T.

If your battery is swollen, [take appropriate precautions](#). For your safety, **discharge your battery below 25%** before disassembling your phone. This reduces the risk of a dangerous thermal event if the battery is accidentally damaged during the repair.

You'll need replacement adhesive to reattach components when reassembling the device.



TOOLS:

- [Phillips #00 Screwdriver](#) (1)
- [iOpener](#) (1)
- [iFixit Opening Picks \(Set of 6\)](#) (1)
- [Spudger](#) (1)



PARTS:

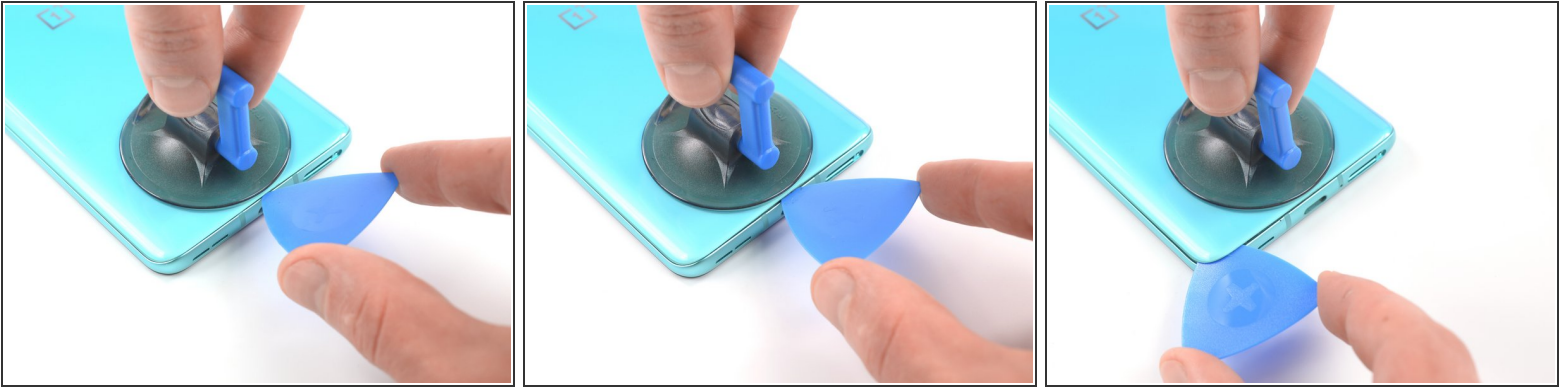
- [OnePlus 8T Battery](#) (1)

Step 1 — Heat the rear glass



- Switch off your phone.
- [Heat an iOpener](#) to loosen the adhesive beneath the rear glass. Apply the iOpener for at least two minutes. You might want to repeat this step several times during the rear glass removal.
- ⓘ A hair dryer, heat gun, or hot plate may also be used, but be careful not to overheat the phone—the AMOLED display and internal battery are both susceptible to heat damage.

Step 2 — Create a gap



- Apply a suction cup to the back of the phone, as close as possible to the center of the bottom edge.
- ❗ If the back cover is cracked, the suction handle may not stick. Try [lifting it with strong tape](#), or superglue the suction handle in place and allow it to cure so you can proceed.
- Pull on the suction cup to create a gap between the rear glass and the frame.
- Insert the tip of an opening pick into the gap and slide it to the bottom left corner.
- Leave the opening pick in its place to prevent the adhesive from resealing.

Step 3 — Slice the adhesive



- Insert a second opening under the bottom left corner.
- Slide the opening pick along the bottom edge to the bottom right corner.
- Leave the pick in its place to prevent the adhesive from resealing.

Step 4 — Slice the adhesive



 If the adhesive becomes hard to cut, it has most likely cooled down. [Use your iOpener](#) to reheat it.

- Insert a third opening pick under the bottom right corner.
- Slide the opening pick along the right edge to the top right corner.
- Leave the opening picks in their place to prevent the adhesive from resealing.

Step 5 — Slice the adhesive



- Insert a fourth opening pick under the top right corner.
- Slide it along the top edge to the top left corner to cut the adhesive.
- Leave the opening pick in its place to prevent the adhesive from resealing.

Step 6 — Slice the remaining adhesive



- Insert a fifth opening pick under the top left corner.
- Slide the opening pick along the left edge to the bottom left corner to cut the remaining adhesive.

Step 7 — Remove the rear glass



- Remove the rear glass.
- ★ After installing the back cover, apply strong, steady pressure to your phone for several minutes to help the adhesive form a good bond—a stack of heavy books works well.

Step 8 — Unscrew the motherboard cover



- Use a Phillips screwdriver to remove the nine 3.8 mm-long screws securing the motherboard cover.

Step 9 — Unclip the motherboard cover



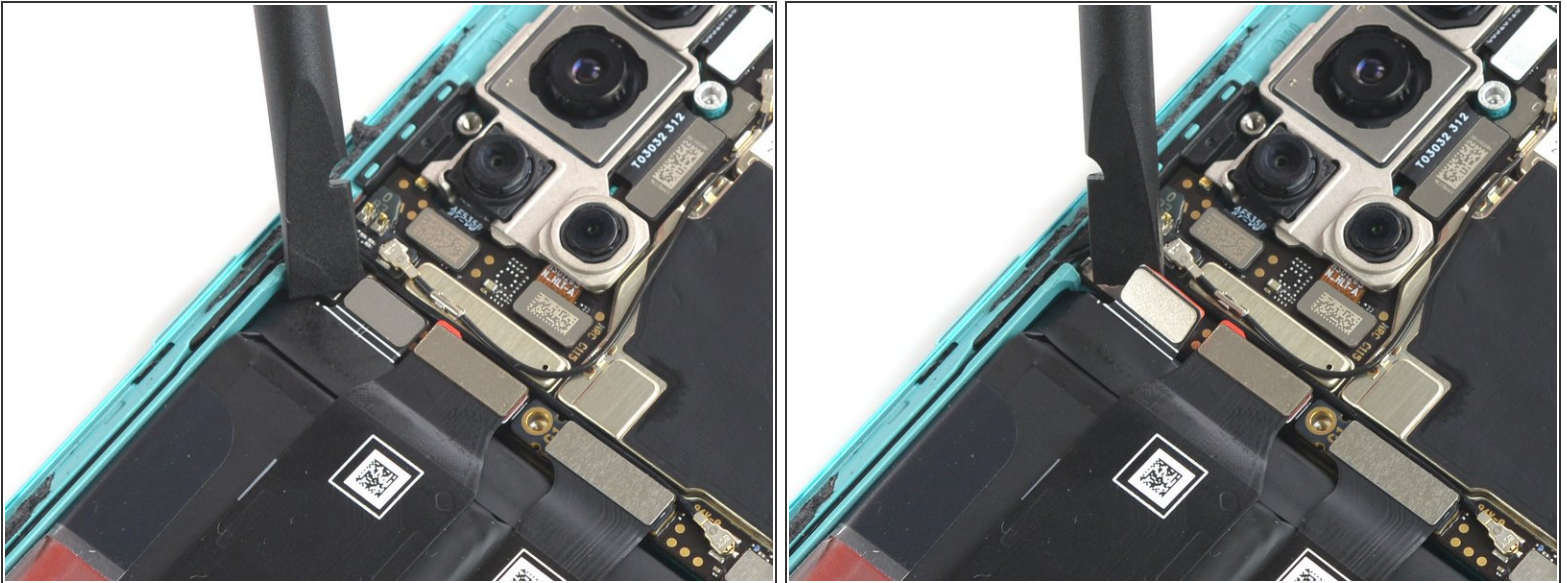
- Insert the tip of an opening pick under the bottom left corner of the motherboard cover.
- Use the opening pick to lift the motherboard cover up and release the plastic clips that hold it in place.

Step 10 — Remove the motherboard cover



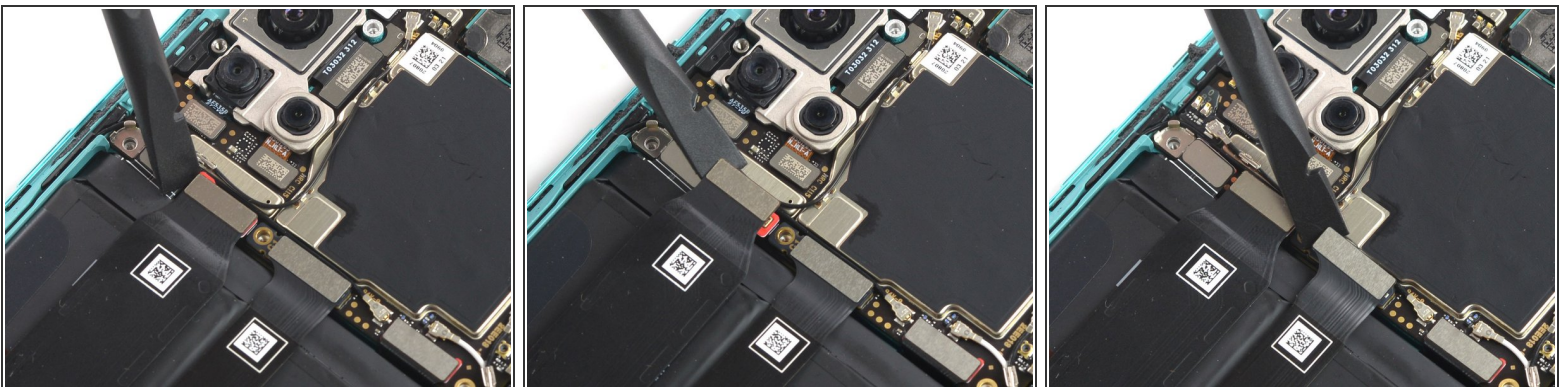
- Remove the motherboard cover.

Step 11 — Disconnect the battery



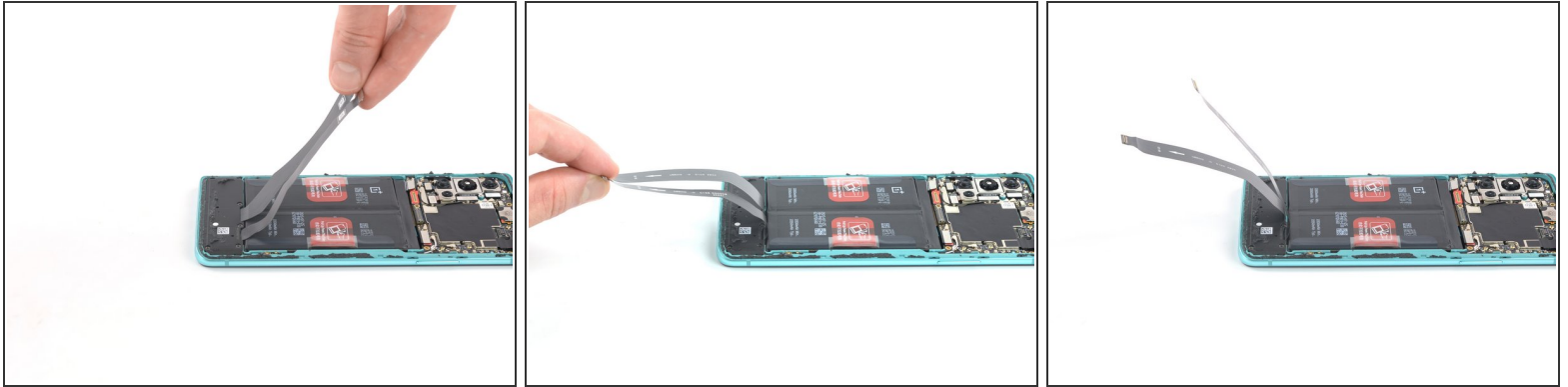
- Use a spudger to disconnect the battery by prying the connector straight up from its socket.

Step 12 — Disconnect the flex cables



- Use the flat end of a spudger to disconnect the two flex cables which are covering the battery.

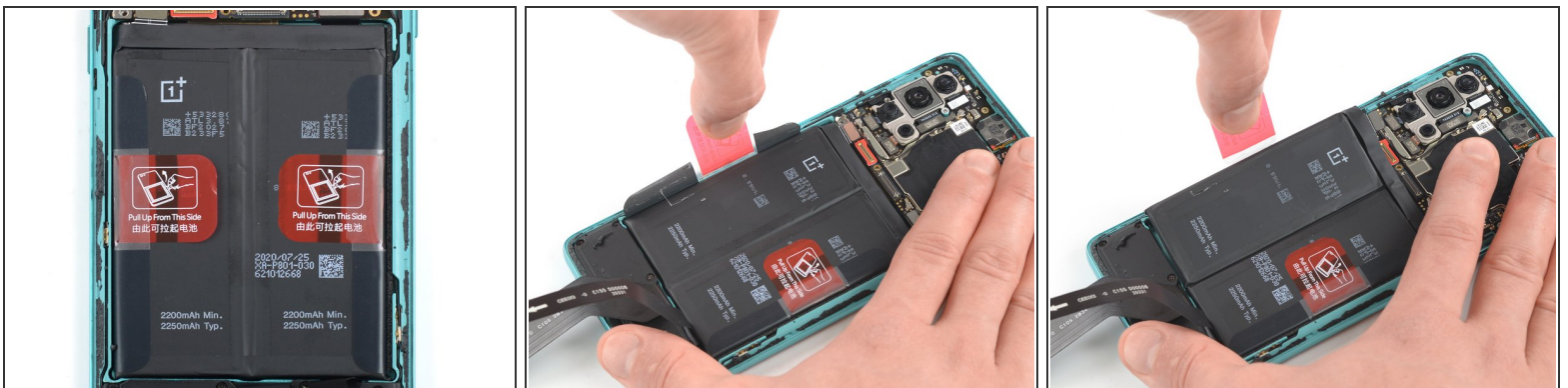
Step 13 — Uncover the battery



- Bend the two flex cables toward the bottom of the phone and out of the way of the battery.

⚠ Take care not to crease the cables.

Step 14 — Pull up the battery



- Peel back the red pull tab and the black sticker from the left edge of the battery.
- Pull the tab up with slow and steady force to separate the battery from the adhesive holding it in place.

Step 15 — Pull up the battery



- Peel back the red pull tab and the black sticker from the right edge of the battery.
- Pull the tab up with slow and steady force to separate the battery from the adhesive holding it in place.

Step 16 — Remove the battery



- Remove the battery.

If possible, turn on your device and test your repair before installing new adhesive and resealing.

Secure the new battery with pre-cut adhesive or double-sided adhesive tape. In order to position it correctly, apply the new adhesive into the device at the places where the old adhesive was located, not directly onto the battery. Press the new battery firmly into place.

To reassemble your device, follow these instructions in reverse order. Apply new adhesive where necessary after cleaning the relevant areas with isopropyl alcohol (>90%).

For optimal performance, **calibrate your newly installed battery**: Charge it to 100% and keep charging it for at least 2 more hours. Then use your device until it shuts off due to low battery. Finally, charge it uninterrupted to 100%.

Take your e-waste to an [R2 or e-Stewards certified recycler](#).

Repair didn't go as planned? Try some [basic troubleshooting](#), or ask our [Answers community](#) for help.