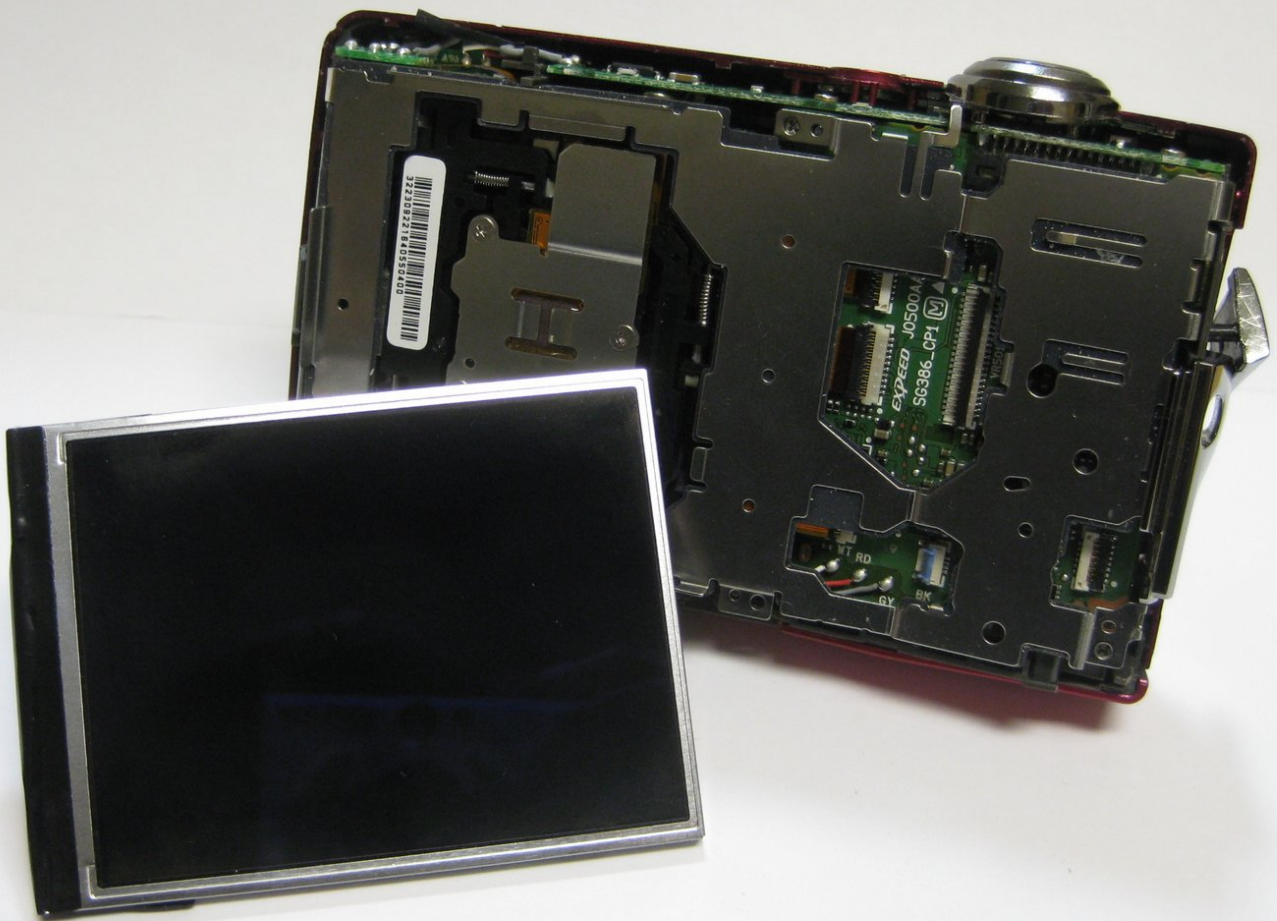




# Nikon Coolpix S630 LCD Screen Replacement

This guide will help you remove the LCD screen for this device for repair, replacement, or maintenance.

Written By: Anna Katrina



# INTRODUCTION

This guide will go through the steps to properly and safely remove the LCD screen from your Nikon Coolpix S630 for repair, replacement, or maintenance.

---

## TOOLS:

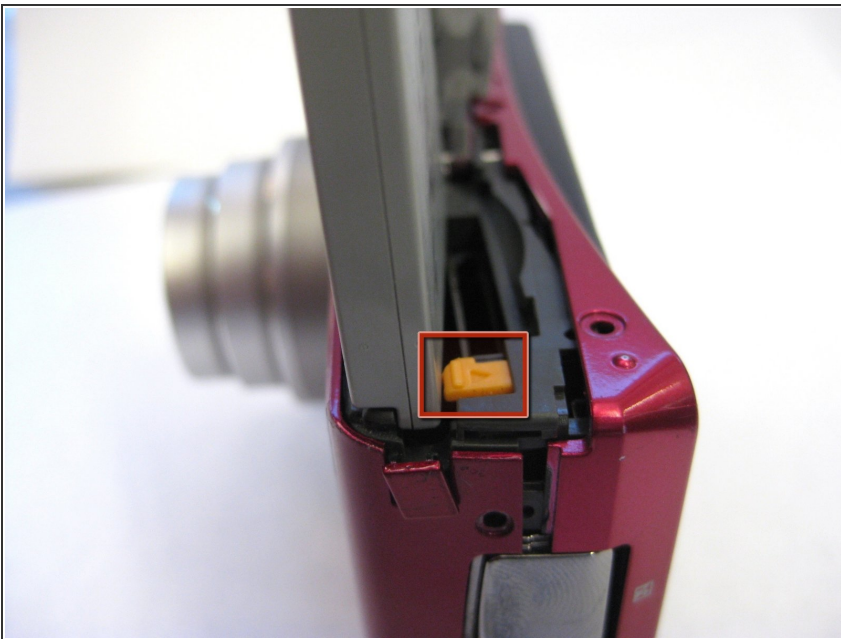
- [iFixit Opening Tools](#) (1)
  - [Tweezers](#) (1)
-

## Step 1 — Battery Compartment



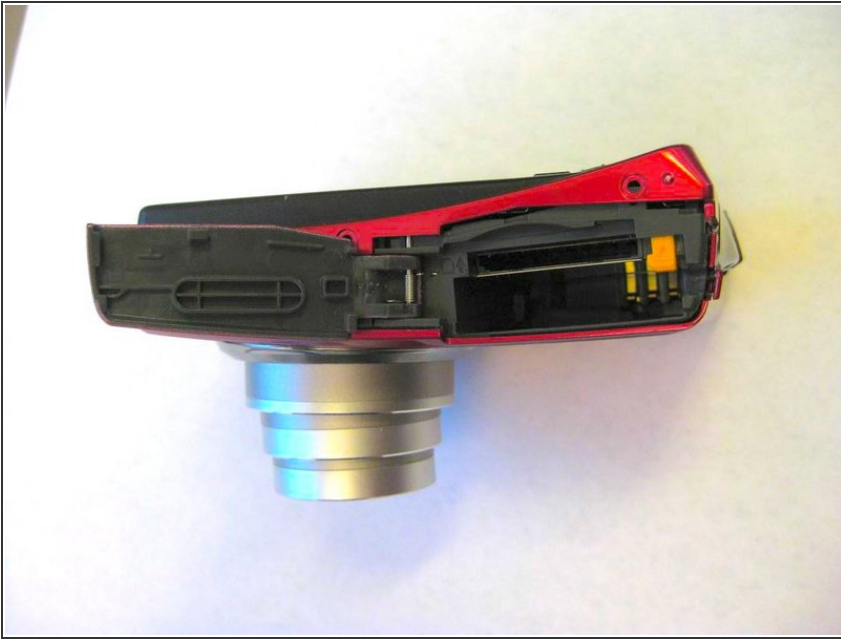
- The battery compartment is located on the bottom of the camera.
- Place your thumb on the battery door.
- Slide the door away from the camera in the direction the arrow points to.

## Step 2 — Battery



- Slide the yellow tab towards the back of the camera.
- The battery should pop out.
- Remove the battery.

### Step 3 — Memory Card



- Press the memory card down into the camera.
- The memory card should pop out.
- Remove the memory card.

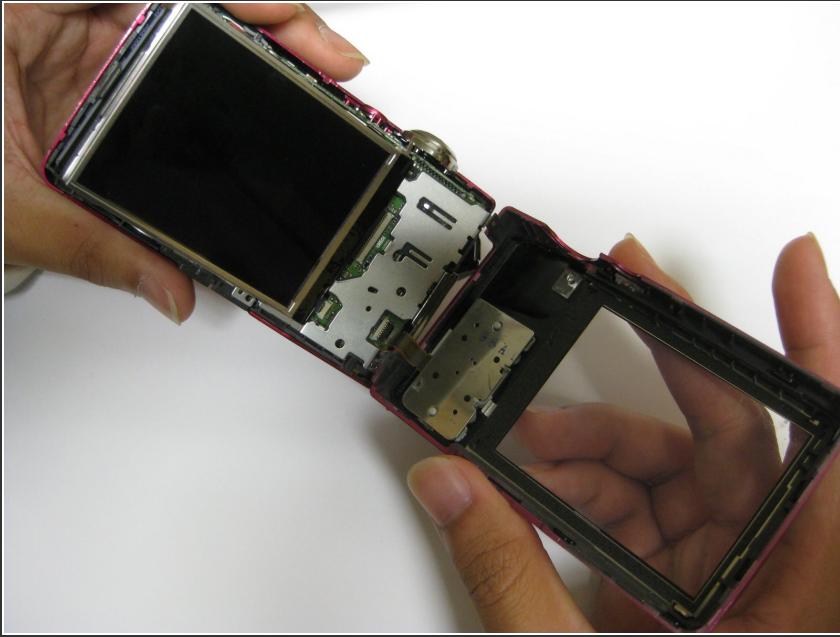
### Step 4 — Back Cover Removal



- Unscrew the two 3.5mm Phillips screws from the side with the AV outlet.
- Unscrew the 3.5mm Phillips screw from the opposite side of the camera.
- Unscrew the six 3.5mm Phillips screws from the bottom of the camera.

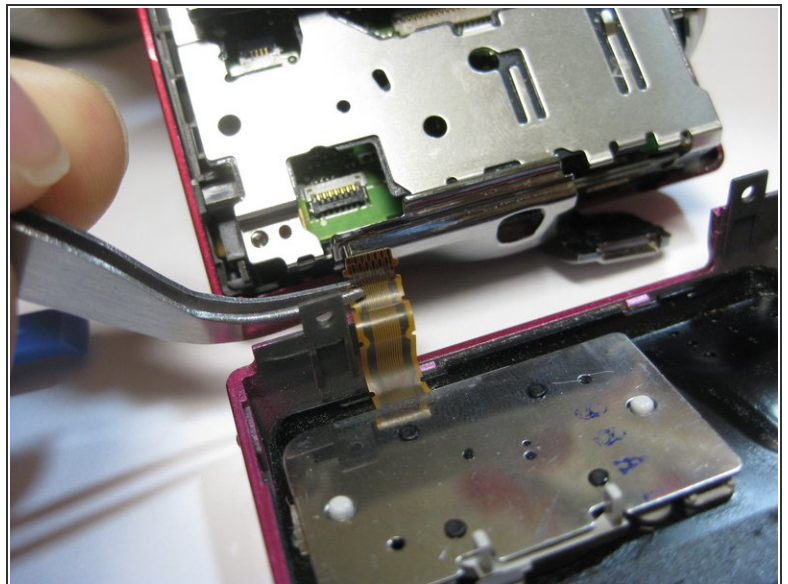
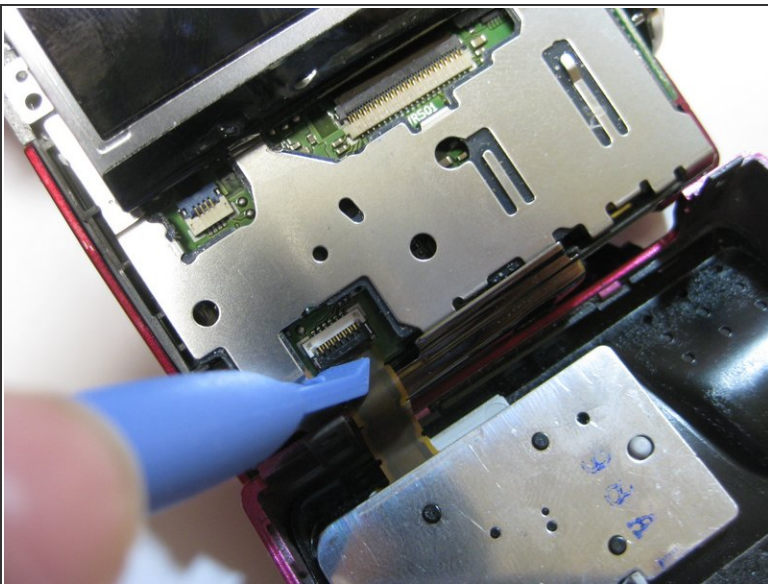


## Step 5



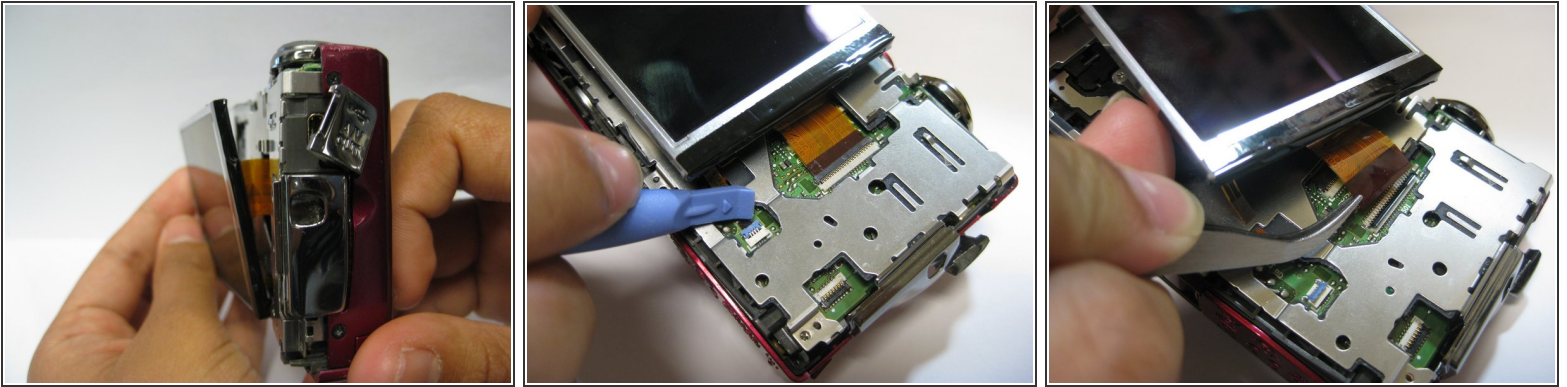
- Carefully remove the back casing from the camera.
- ⚠ Be mindful when removing the back casing as there is a ribbon that still connects the back casing to the motherboard.

## Step 6 — Detaching Ribbon




- Place the plastic opening tool underneath the ribbon tab as shown. Gently lift the tab up.
- Gently pull the ribbon from the logic board with tweezers.
- With the ribbon disconnected, the back casing should now be detached from the rest of the camera.

## Step 7 — LCD Screen Removal

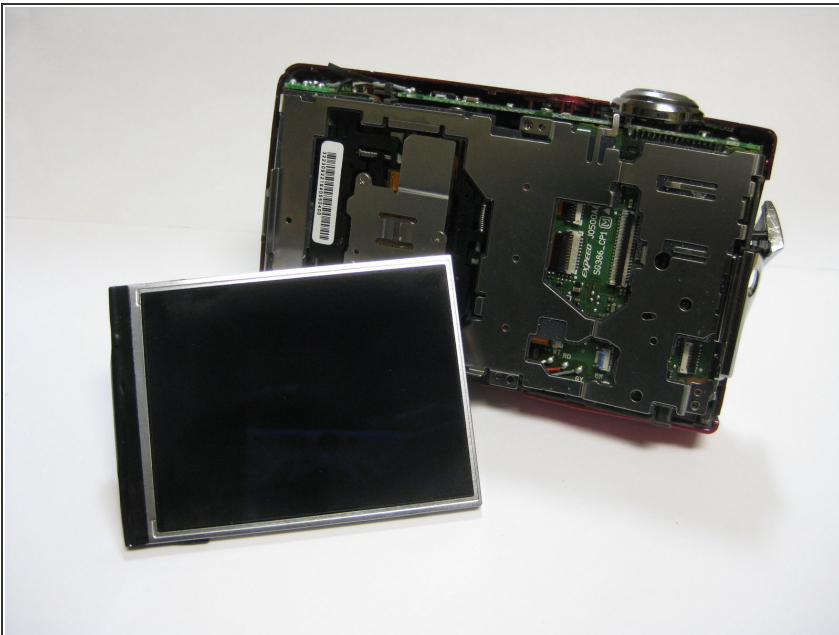


- Lift LCD screen carefully from the metal casing

 Be cautious when lifting screen as it is still connected to the logic board by two ribbons

- Lift the two tabs for both ribbons with a plastic case opener like in the previous step
- Pull out ribbons gently from the logic board with tweezers to disconnect screen

## Step 8



- Disconnect the LCD screen from the logic board!

To reassemble your device, follow these instructions in reverse order.

