

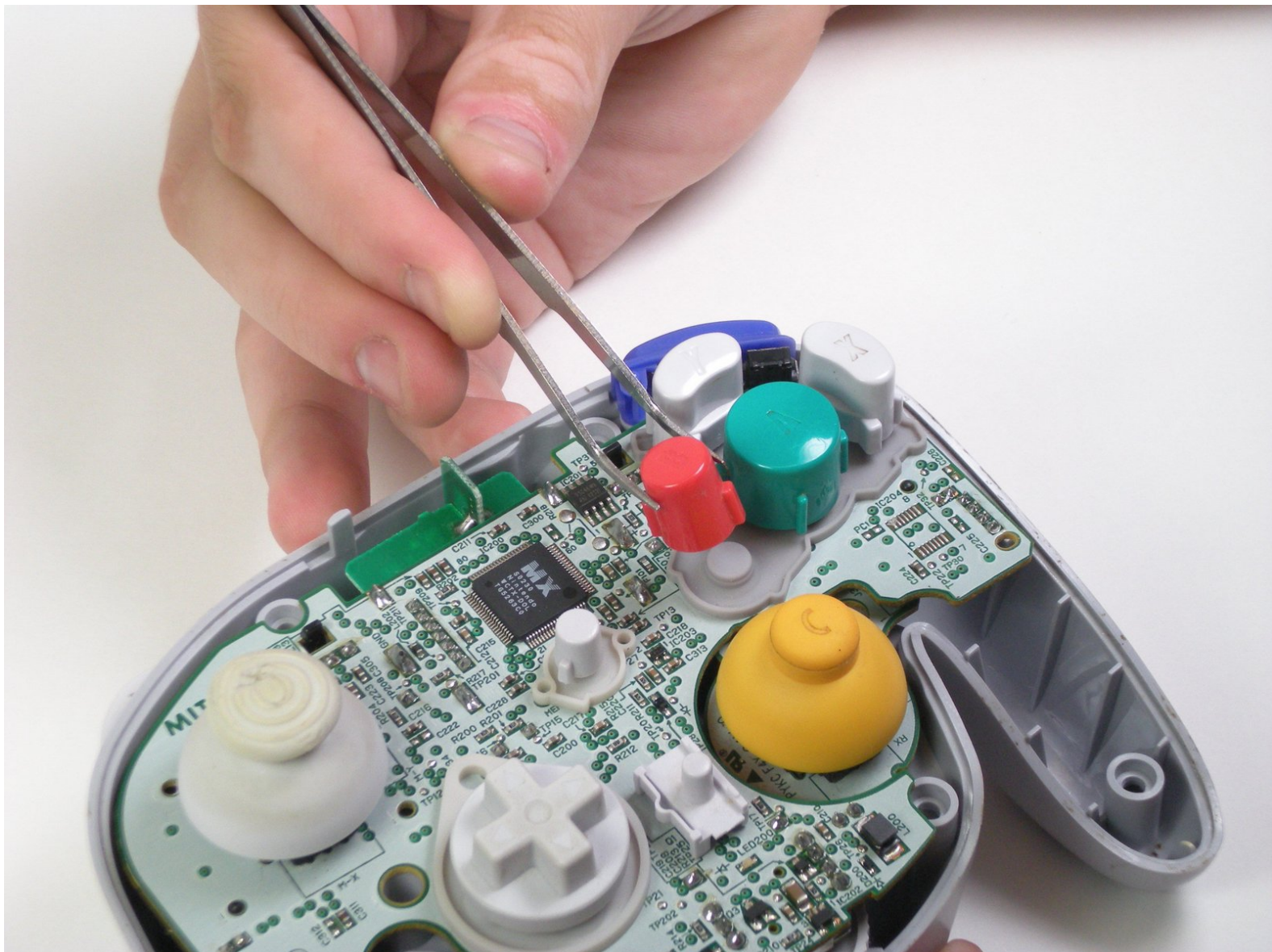


# Nintendo WaveBird Wireless Controller

## Buttons Replacement

Remove the following buttons from the Nintendo WaveBird Wireless Controller: A, B, X, Y, Z, D-Pad, Power Switch, and Start button.

Written By: Douglas



---

## INTRODUCTION

This guide will teach you how to replace defective buttons. You may need to clean under the buttons if you have [sticky buttons](#).



### TOOLS:

- [Y1 Tri-point Screwdriver](#) (1)
- [Tweezers](#) (1)

*Import tools from prerequisite guide.*

---

## Step 1 — Batteries



- Pull down on the battery cover release lever and pull back to remove the cover.

## Step 2



- Remove both batteries from the device.



### Step 3 — Front Panel



- Remove the eight 9 mm screws from the back panel using the Tri-point Y1 screwdriver.
- ☑ During reassembly, firmly hold the panels of the controller together while replacing the screws so the panels do not separate.

## Step 4





- Carefully turn over the controller and place it on a flat surface.
- Slowly separate the top panel from the bottom panel.
- i The buttons are loose and may fall off the motherboard.
- Once separated, set aside the top panel.
- ✦ During reassembly, make sure the front panel lines up with the buttons so they slide back into place.

## Step 5 — Buttons



- Use tweezers to remove the buttons.

 It may be easier to remove the A button off of the pad by lifting it with your fingers.

 During reassembly, make sure all buttons are in their respective sockets so they match up with the front panel.

To reassemble your device, follow these instructions in reverse order.