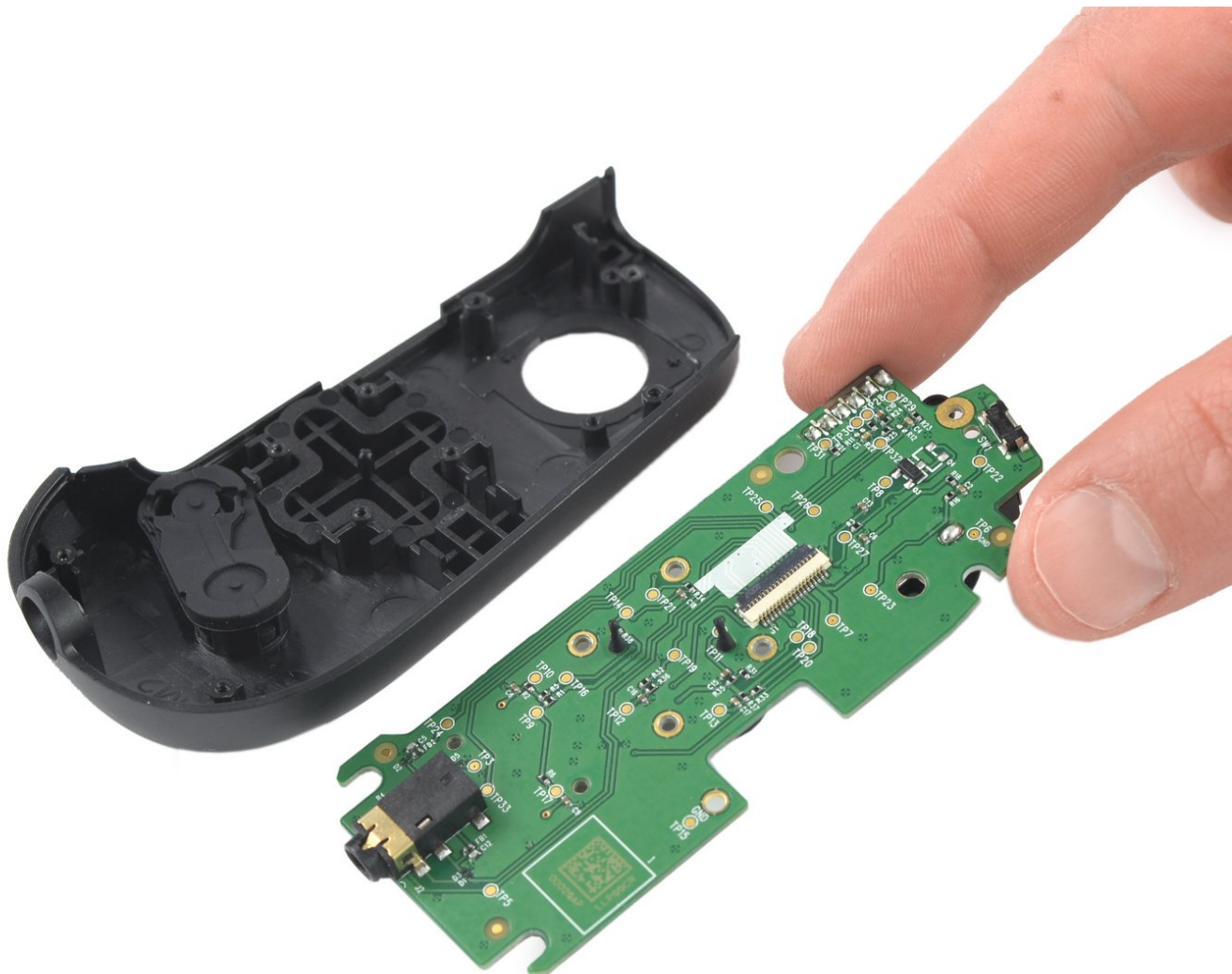




Backbone One Left Mainboard Replacement

How to replace the mainboard on the left controller handle in your Backbone One.

Written By: Adriana Zwink



INTRODUCTION

Use this guide to replace the mainboard on the left controller handle in your Backbone one.



TOOLS:

- [Phillips #0 Screwdriver](#) (1)
 - [ESD Safe Tweezers Blunt Nose](#) (1)
 - [iFixit Opening Picks set of 6](#) (1)
-

Step 1 — Unfasten the screws



- Use a Phillips screwdriver to remove the four 5.9 mm-long screws.

Step 2 — Rotate the upper cover



- Lift up the upper part of the controller.
- Swing over the upper cover and place it on the controller case.

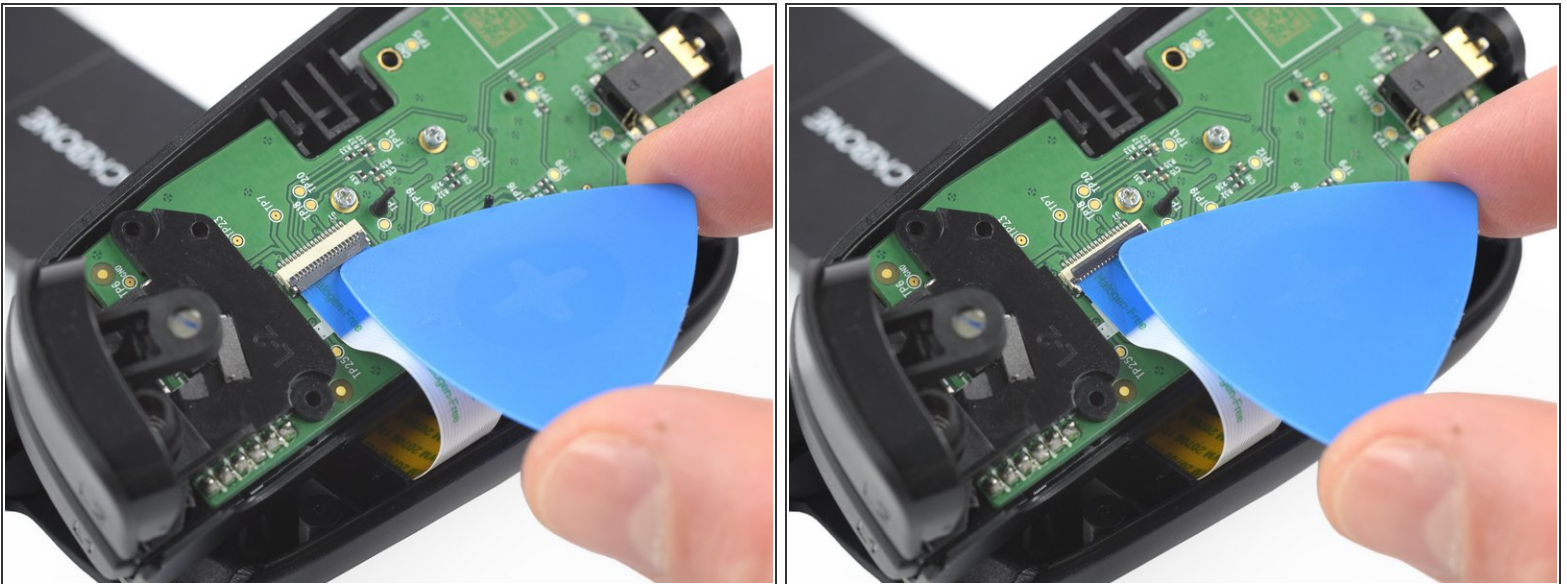
⚠ Take care that the interconnecting cable has no tension.

Step 3 — Remove the protective tape



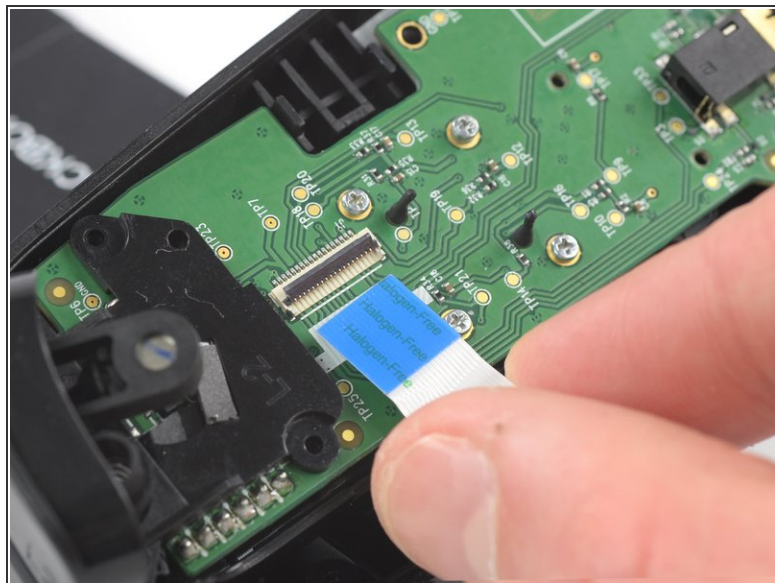
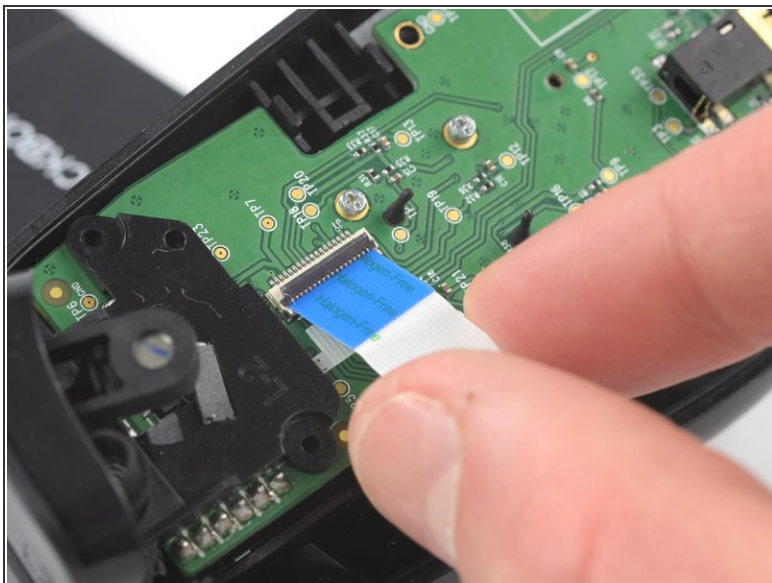
- Use a pair of tweezers to remove the yellow protective tape which is placed over the interconnect cable connector.

Step 4 — Open the ZIF connector



- Use the tip of an opening pick to open the gray flap of the ZIF connector by pushing it upwards.

Step 5 — Disconnect the interconnect cable



- Use your fingers to disconnect the interconnect cable from its connector.

Step 6



- Remove the upper half of the left controller assembly.

Step 7 — Remove the screw



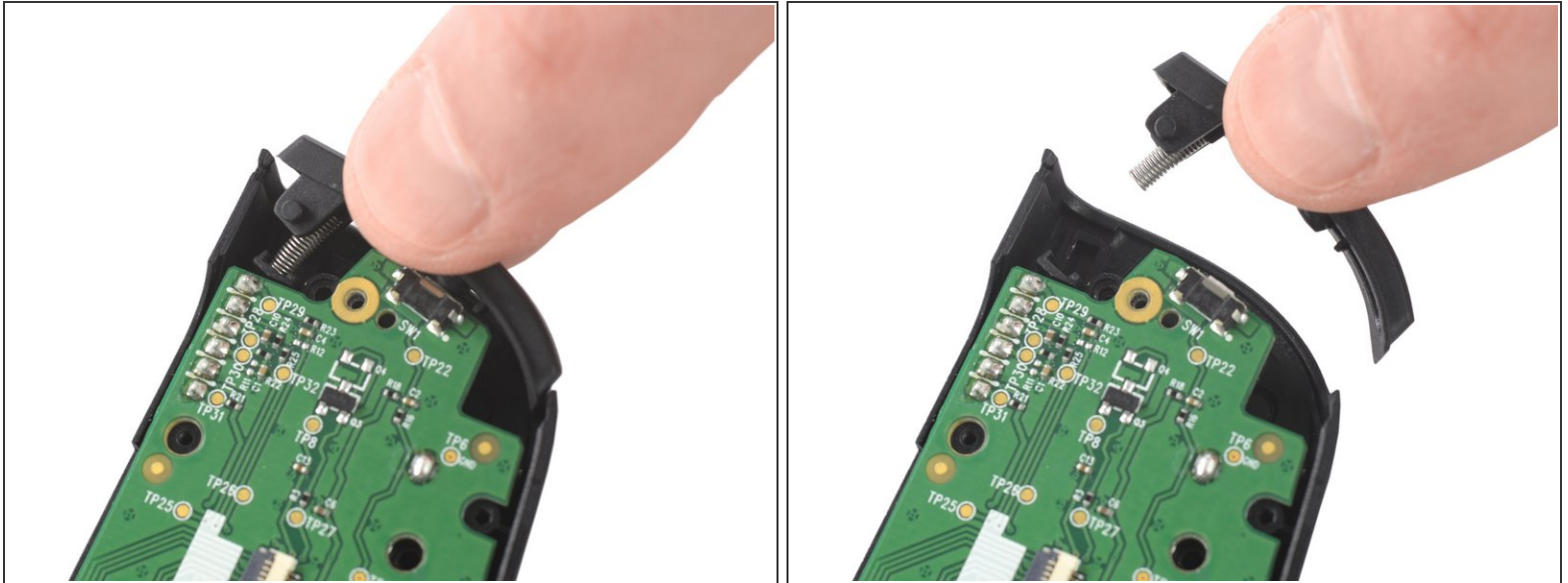
- Use a Phillips screwdriver to remove the 5.9 mm-long screw which is securing the trigger.
- ⓘ The screw is difficult to reach. Insert the screwdriver at an angle of 45 degrees.

Step 8 — Remove the trigger



- Remove the left trigger.

Step 9 — Remove the bumper



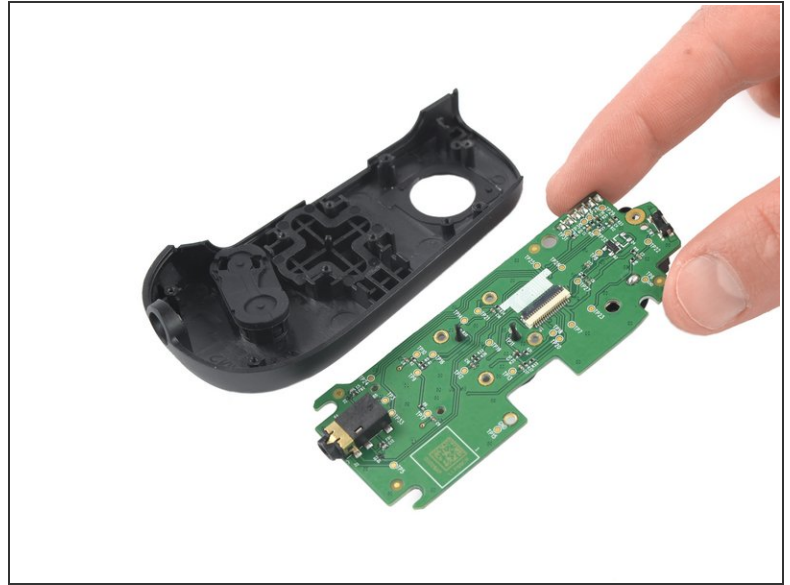
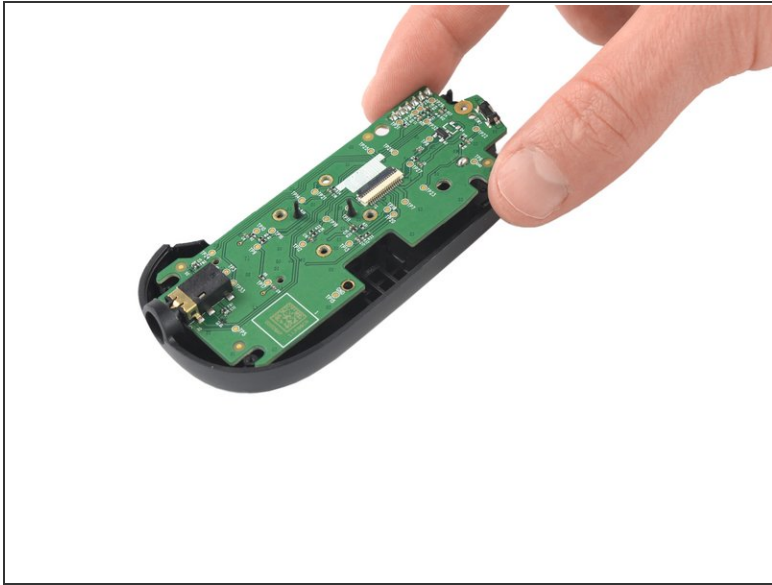
- Use your fingers to remove the left bumper.

Step 10 — Remove the screws



- Use a Phillips screwdriver to remove the four 3.9 mm-long screws.

Step 11 — Remove the mainboard



- Remove the mainboard.

To reassemble your device, follow these instructions in reverse order.

Take your e-waste to an [R2 or e-Stewards certified recycler](#).

Repair didn't go as planned? Ask our [Answers community](#) for help.