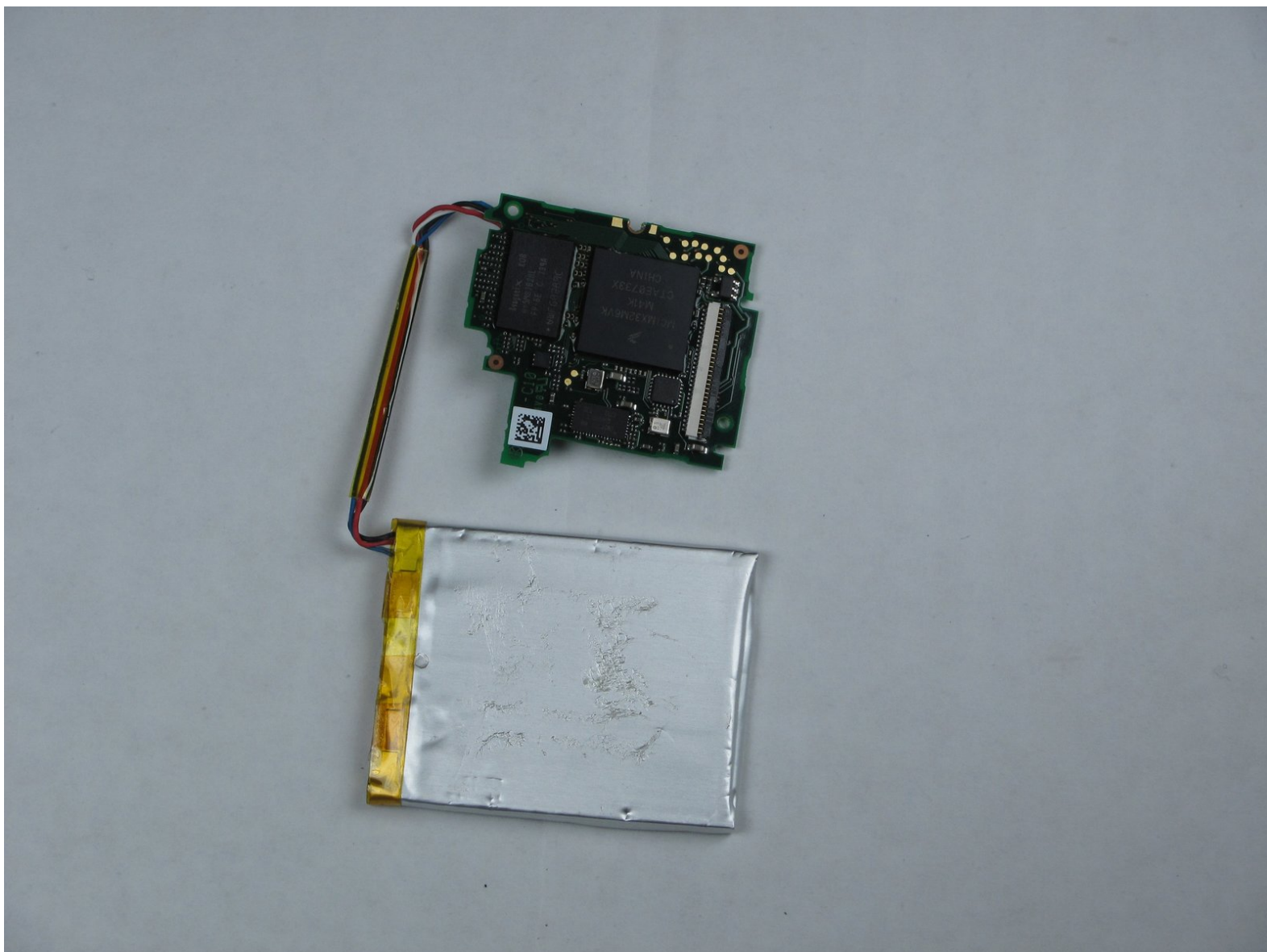




Zune Flash 2nd Generation Battery and Memory Board Replacement

This will serve as a guide for the replacement...

Written By: killdashnine



INTRODUCTION

This will serve as a guide for the replacement of a Zune Flash 2nd Generation battery and memory board.

TOOLS:

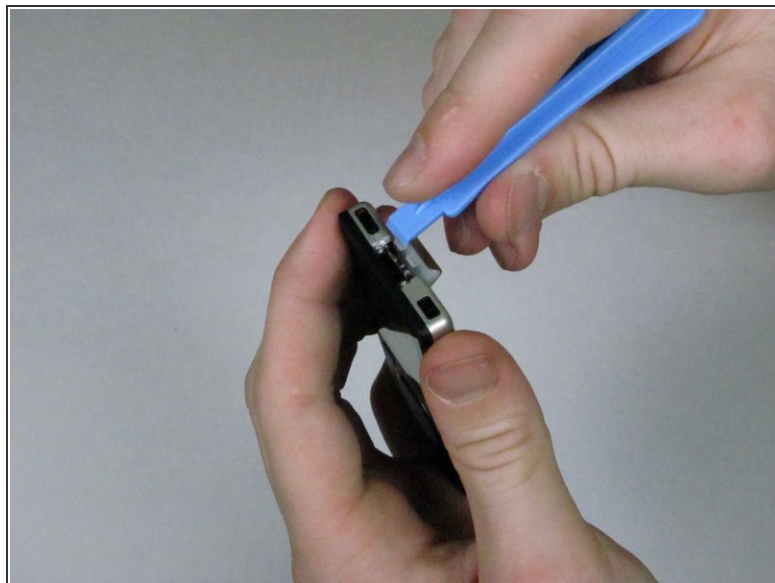
- [iFixit Opening Tool](#) (1)
 - [Metal Spudger](#) (1)
 - [Soldering Iron](#) (1)
 - [Tri-point Y1 Screwdriver](#) (1)
-

Step 1 — Back Cover



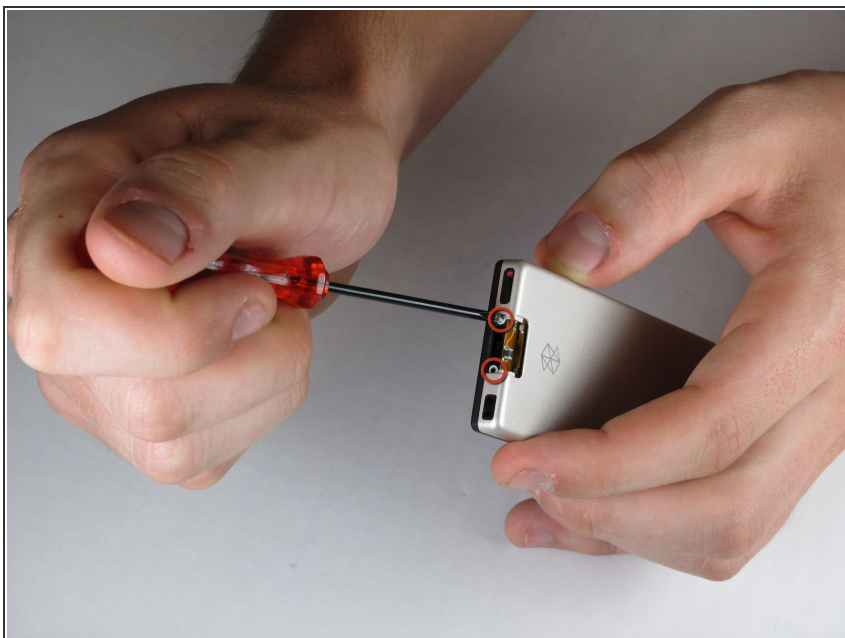
- Prior to disassembly, verify the hold switch is engaged to ensure the device will not turn on during the procedure.
 - If the device turns on while it is being disassembled it could cause irreversible damage to the device.
- i PICS MAKE NO SENSE.**

Step 2



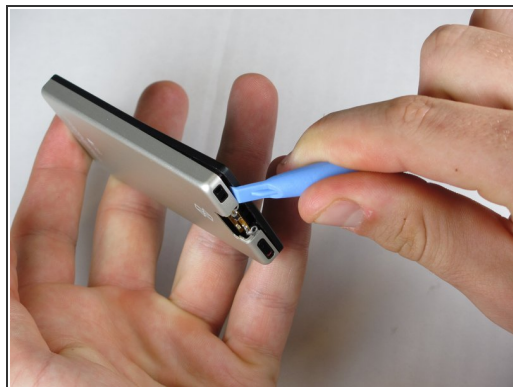
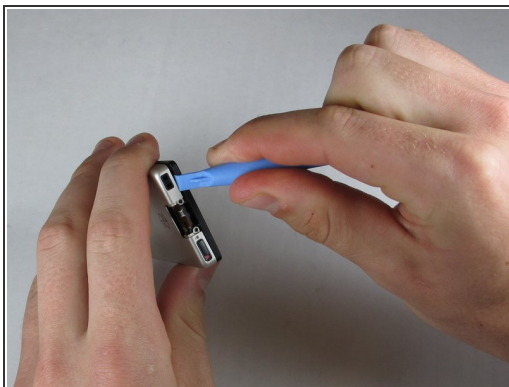
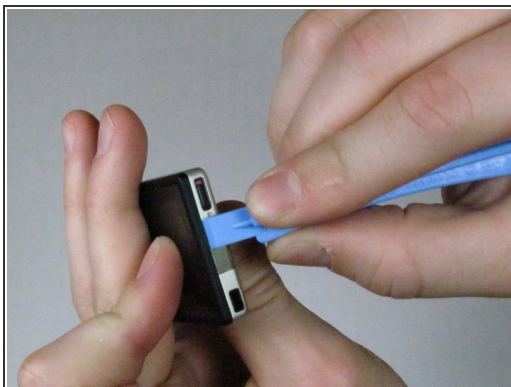
- Remove the top metal clip by inserting a Zune opening tool in between the faceplate and back cover and pulling gently back as shown in the images.
- You should hear a 'click' as the clip detaches from the device.

Step 3



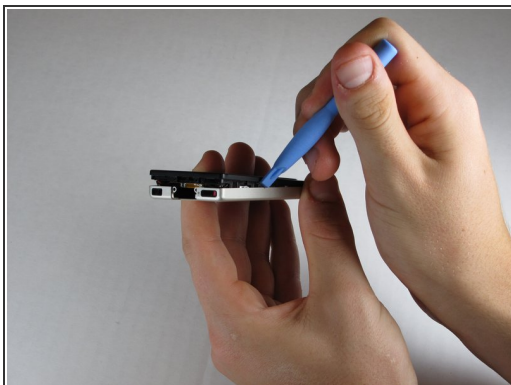
- Remove the two screws shown using a Y00 Tri-Wing screwdriver.

Step 4



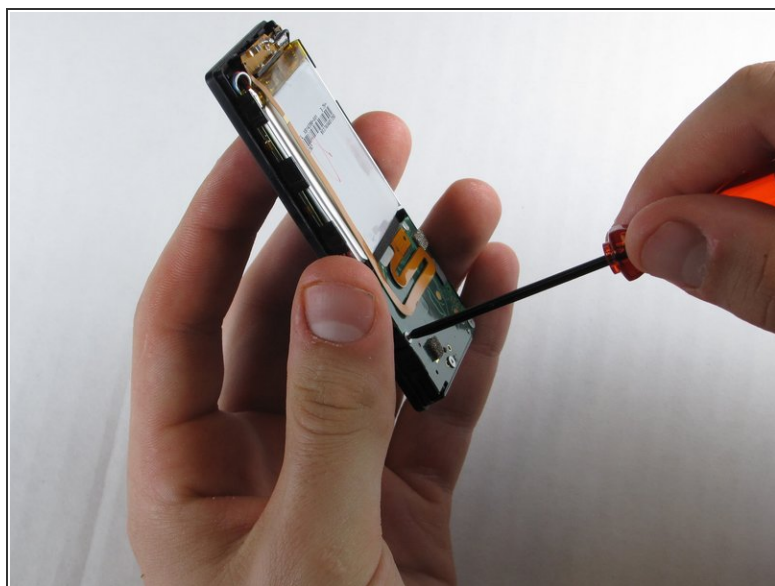
- Insert the Zune opening tool between the faceplate and the back cover, starting from the top and slowly work your way around the device.

Step 5



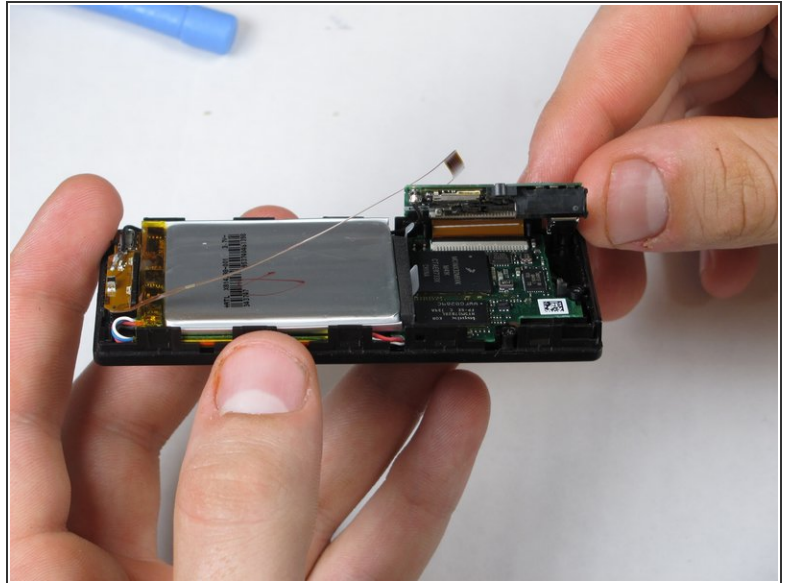
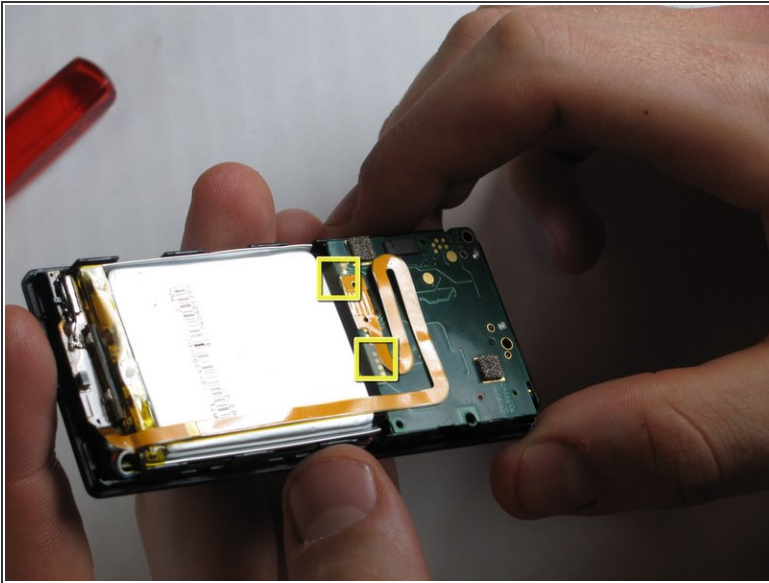
- Work your way around the Zune until the back cover comes free. Remove the back plate and set it aside.

Step 6 — Face Plate



- Remove the three screws (5.5mm by 3mm) from the backside of the Zune using a Y00 Tri-Wing screwdriver.
- Be sure to put this set of screws aside since they are a different size than any other screws in the device.

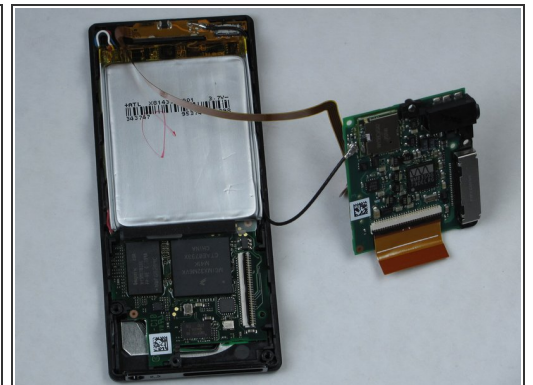
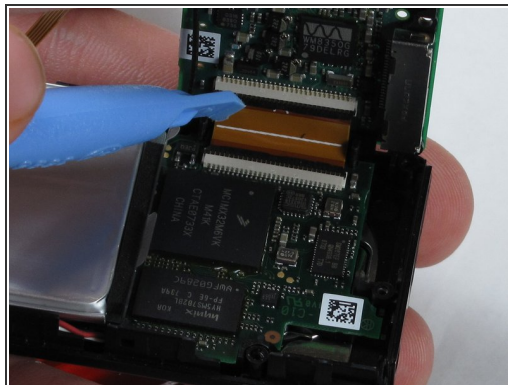
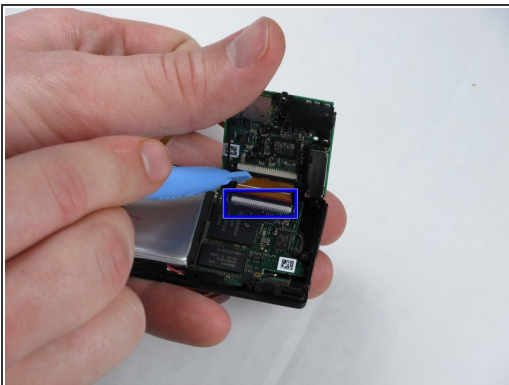
Step 7



- Use your finger or a Zune opening tool to pry back the two clear flaps.
- Next lift the communications board that was being held down by the clear flaps.

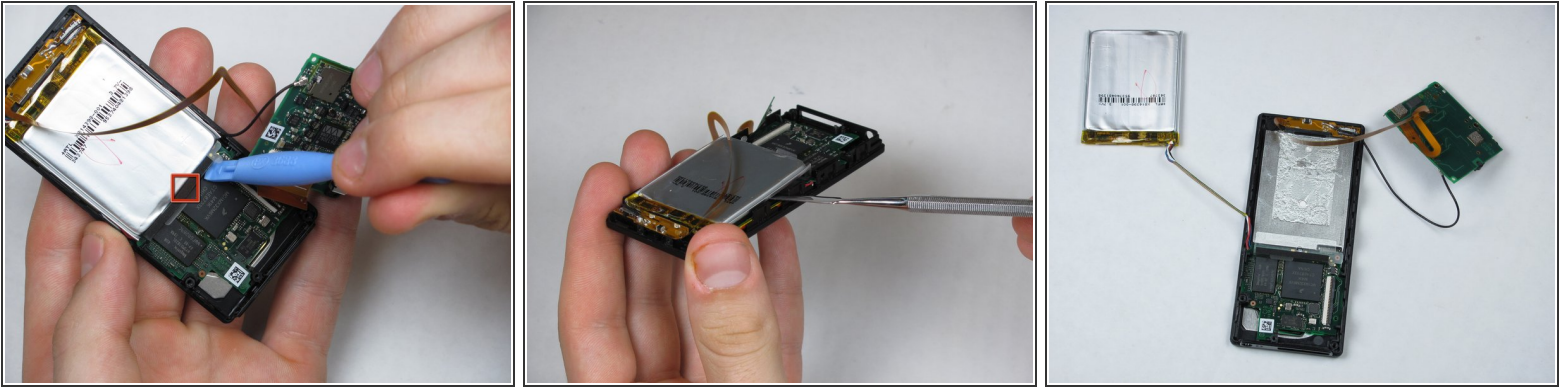
⚠ Be careful not to accidentally detach the slim ribbon that connects between the communications board and the device.

Step 8



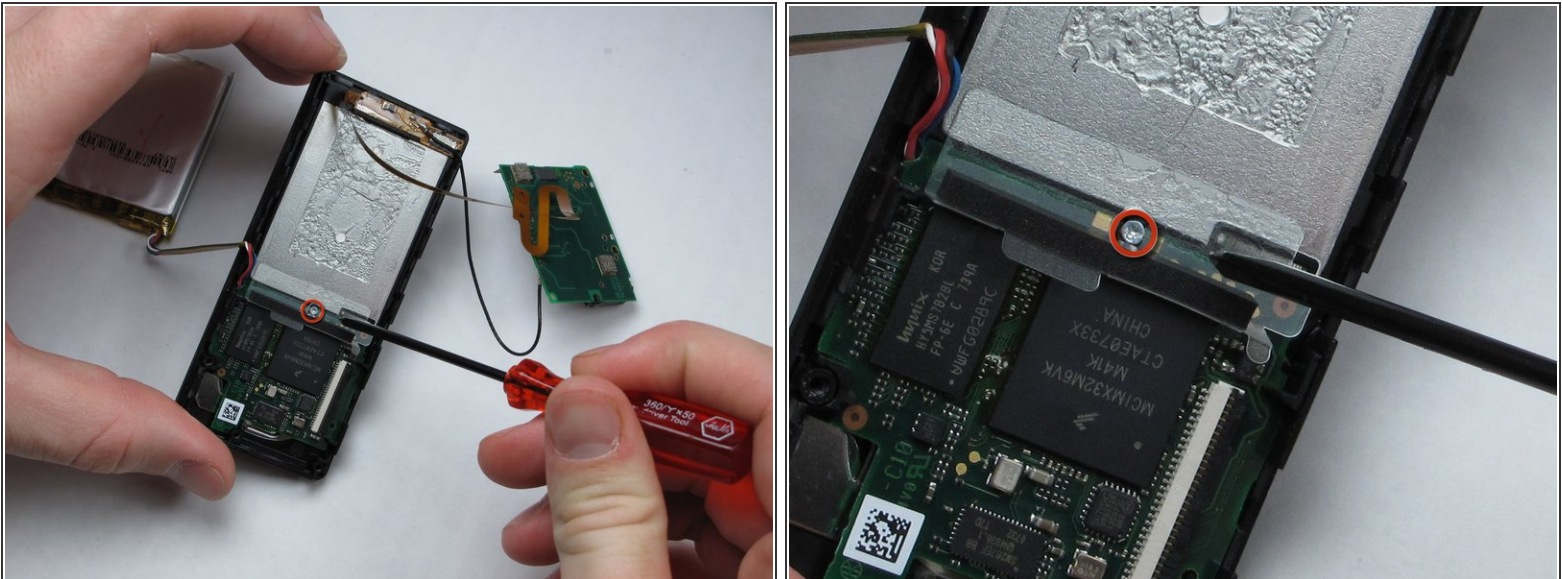
- Disconnect the ribbon with the plastic opening tool by flipping up the black plastic flap where the ribbon connects to the memory board.
- Carefully pull the ribbon out of the memory board, ensuring that the black plastic flap is up before removal to avoid the ripping the ribbon.

Step 9



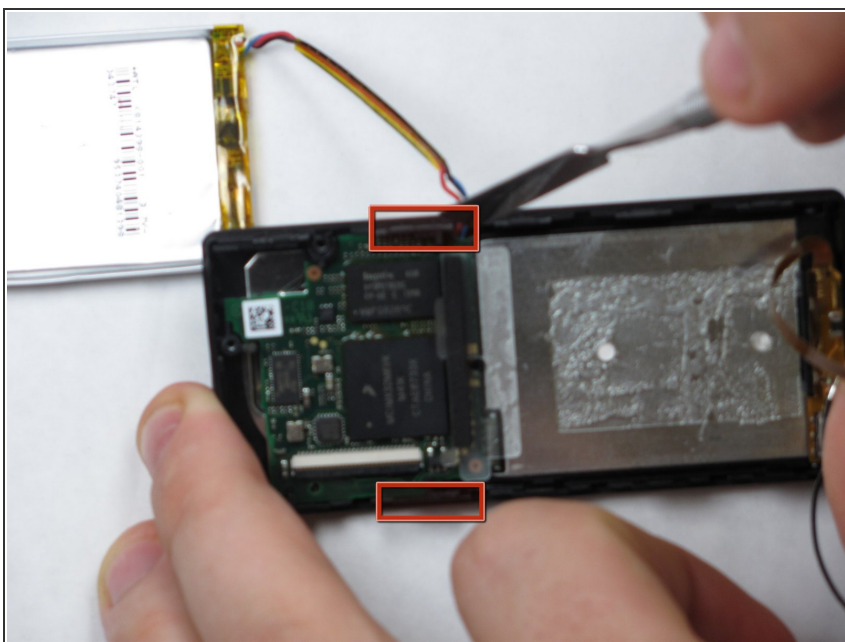
- Remove the battery by prying the battery off from the bottom with a Zune opening tool.
- ⓘ There is an adhesive between the battery and the device, therefore use a metal spudger to finish detaching the battery.
- ⚠ Be sure not to puncture the battery in any way when using the metal spudger.

Step 10



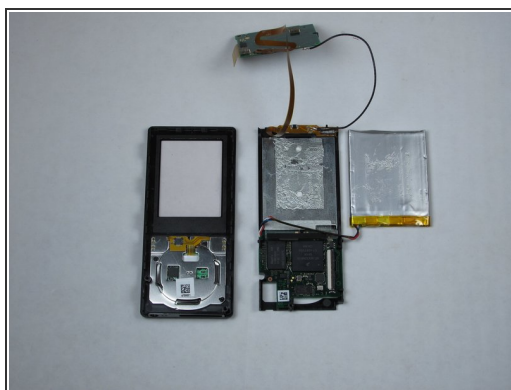
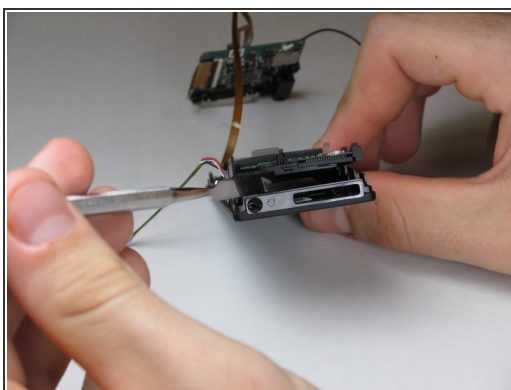
- Remove the single screw under the battery using a small Tri-Wing screwdriver.

Step 11



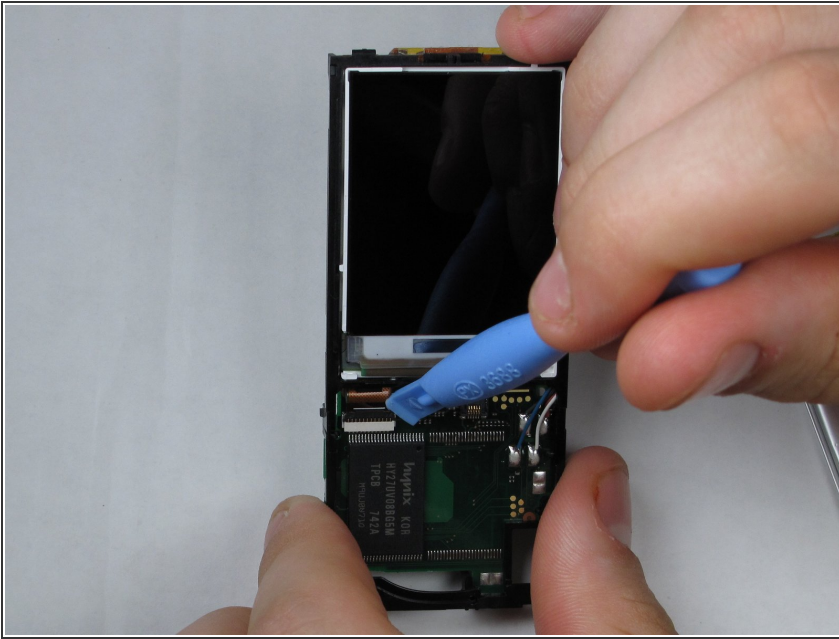
- Disconnect the faceplate from the device by depressing the two tabs located near the middle of each of the sides using a metal spudger.
- This will disconnect the last circuit board in the device from the center frame.

Step 12



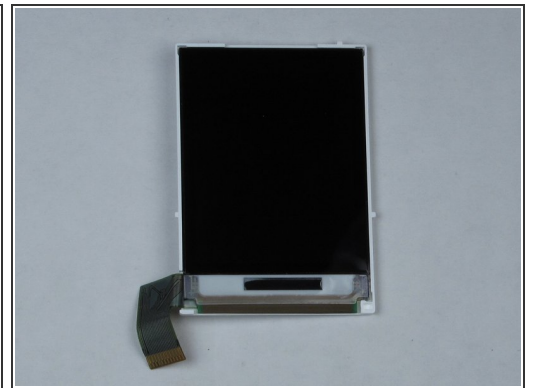
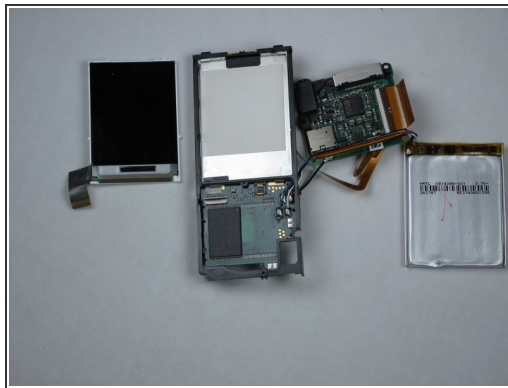
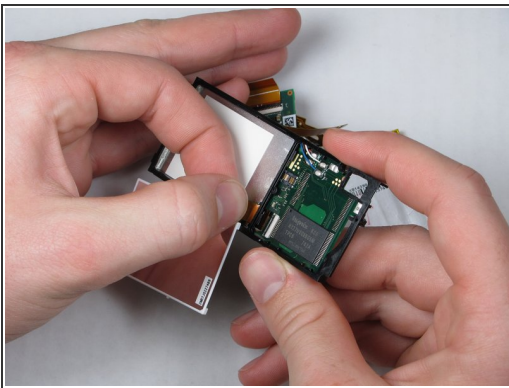
- Remove the faceplate by using a metal spudger to separate it from the remaining components.

Step 13 — LCD Display



- Release the LCD connector ribbon by flipping up the black switch. This will disconnect the LCD from the device.
- At this point the LCD screen should be easily separable from the device.

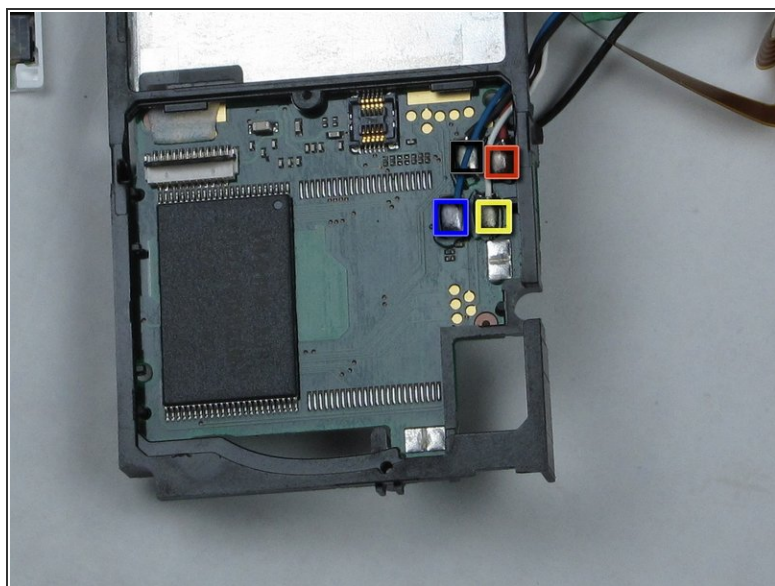
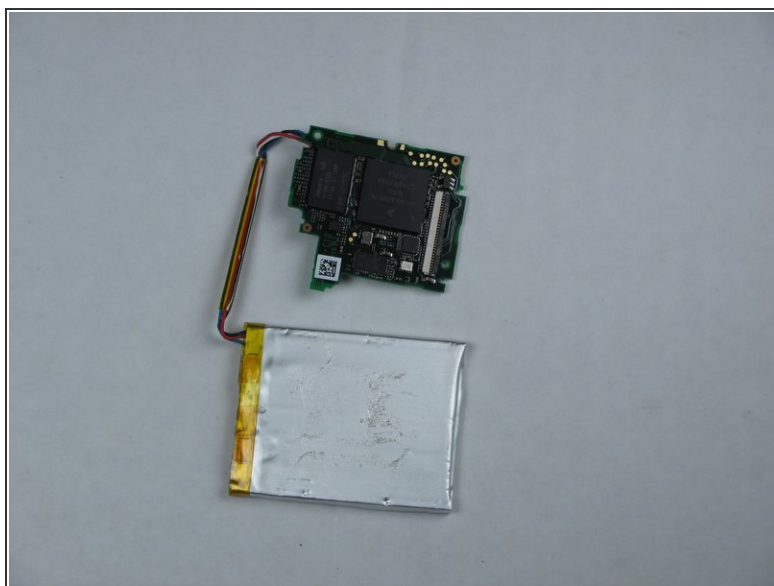
Step 14



⚠ The LCD ribbon is adhered to the memory board with a strip of glue.

- It's safest to flip the display over before removing the ribbon, as shown in the first image.
- To avoid damage, remove the LCD by pulling slowly and carefully on the ribbon, directly away from the memory board.

Step 15 — Battery and Memory Board



- Detaching the memory board from the battery requires desoldering the 4 joints on the memory board.
- It will be easiest to go in the order blue, yellow, black, red.

To reassemble your device, follow these instructions in reverse order.