



VHS Shell Replacement

In this guide, you will learn step-by-step...

Written By: McKinley Hixon



INTRODUCTION

In this guide, you will learn step-by-step instructions on how to replace the broken shell of a VHS tape when it is too broken to work correctly in a VHS player. In doing this repair, you will be able to salvage the tape so that it can be digitized or continue to be watched. No special skills are needed for this repair, with a screwdriver being the only tool used. It is recommended that you cut or rip off any labels on the sides of the tape before beginning, so that it will be easier to take the top half of the shell off.

TOOLS:

Phillips #0 Screwdriver (1)

Step 1 — Plastic Shell



- Unscrew the five 3mm screws with the Phillips #1 screwdriver.

Step 2

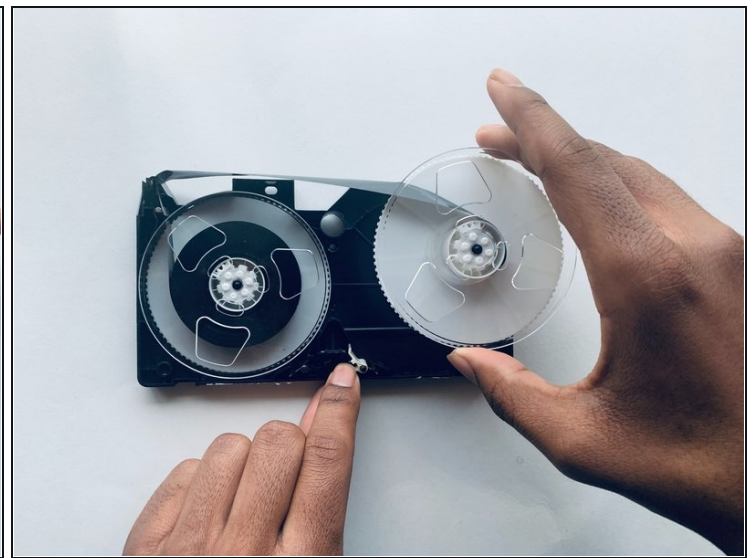


- Once the screws are out, pull off the front of the VHS shell.

ⓘ Take off any labels on the sides of tape before doing this step.

⚠ Make sure you are taking off the front of the shell, otherwise the reels or other loose pieces may fall out.

Step 3



- Hold down on the white lever.
- While holding down, carefully take out the reel on the right.
- Take out the left reel and set them both aside, with the tape still wrapped inside and connecting them.

Step 4



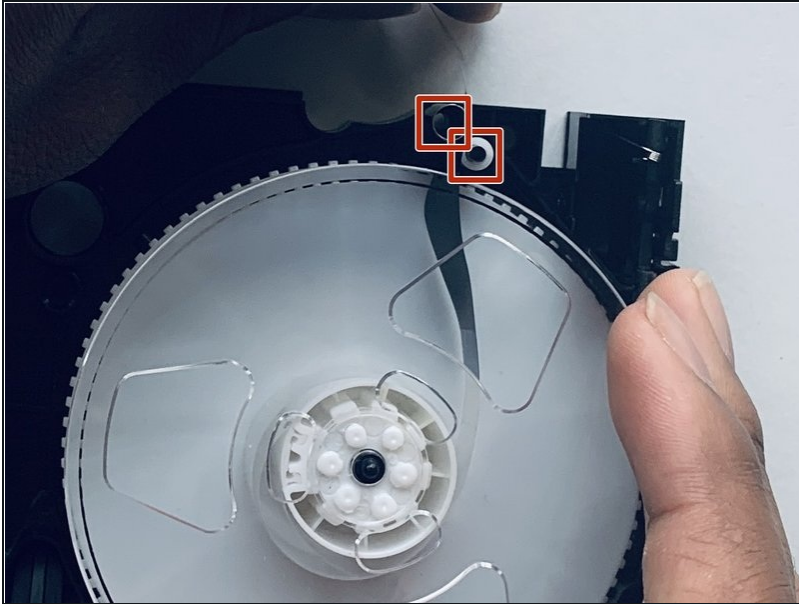
- Get the replacement shell and unscrew the 5 marked 3mm (21/32 in length) #1 Phillips screws with the screwdriver.
- ① If you are unable to buy an empty VHS shell, you can also use one that already has a tape in it, just you would have to repeat step 3 to take out the reel.

Step 5



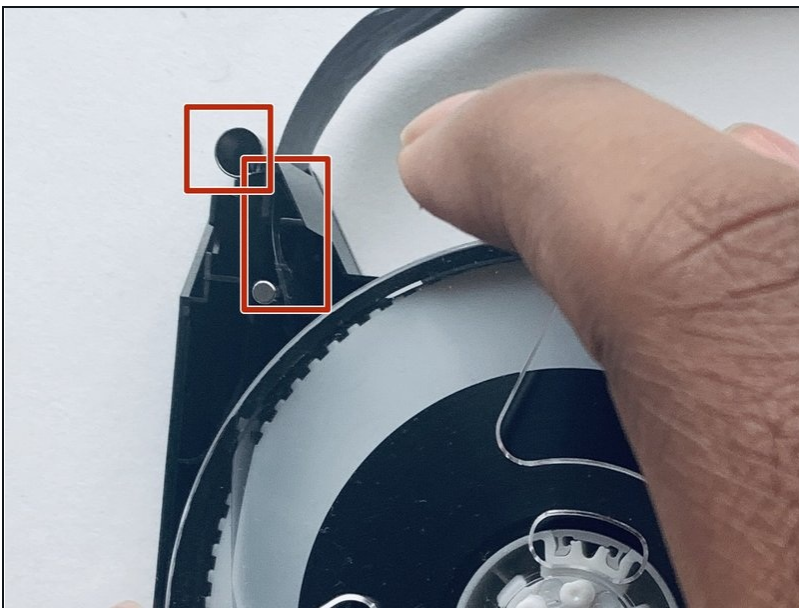
- Once the screws are out, pull off the front of the replacement shell.
- ① Take off any labels on the sides of tape before doing this step.
- ⚠ Make sure you are taking off the front of the shell, otherwise the reels or other loose pieces may fall out.

Step 6



- Place the right reel into the replacement shell, making sure the tape goes in-between metal and plastic circular pieces here.
- ① Make sure that the reel is placed in so that any excess tape not in the reel is hanging out of the top (like pictured in step 8).

Step 7



- Place the left reel into the replacement shell, making sure the tape goes in-between metal circular piece and the plastic triangular piece pictured.

Step 8



- Turn the reels to retract any excess tape hanging out of the top.
- ① This isn't a necessary step, just one that I prefer to do.

Step 9



- Place the top of the replacement shell back on.

Step 10



- Screw the screws back in with a screwdriver.

To reassemble your device, follow these instructions in reverse order.