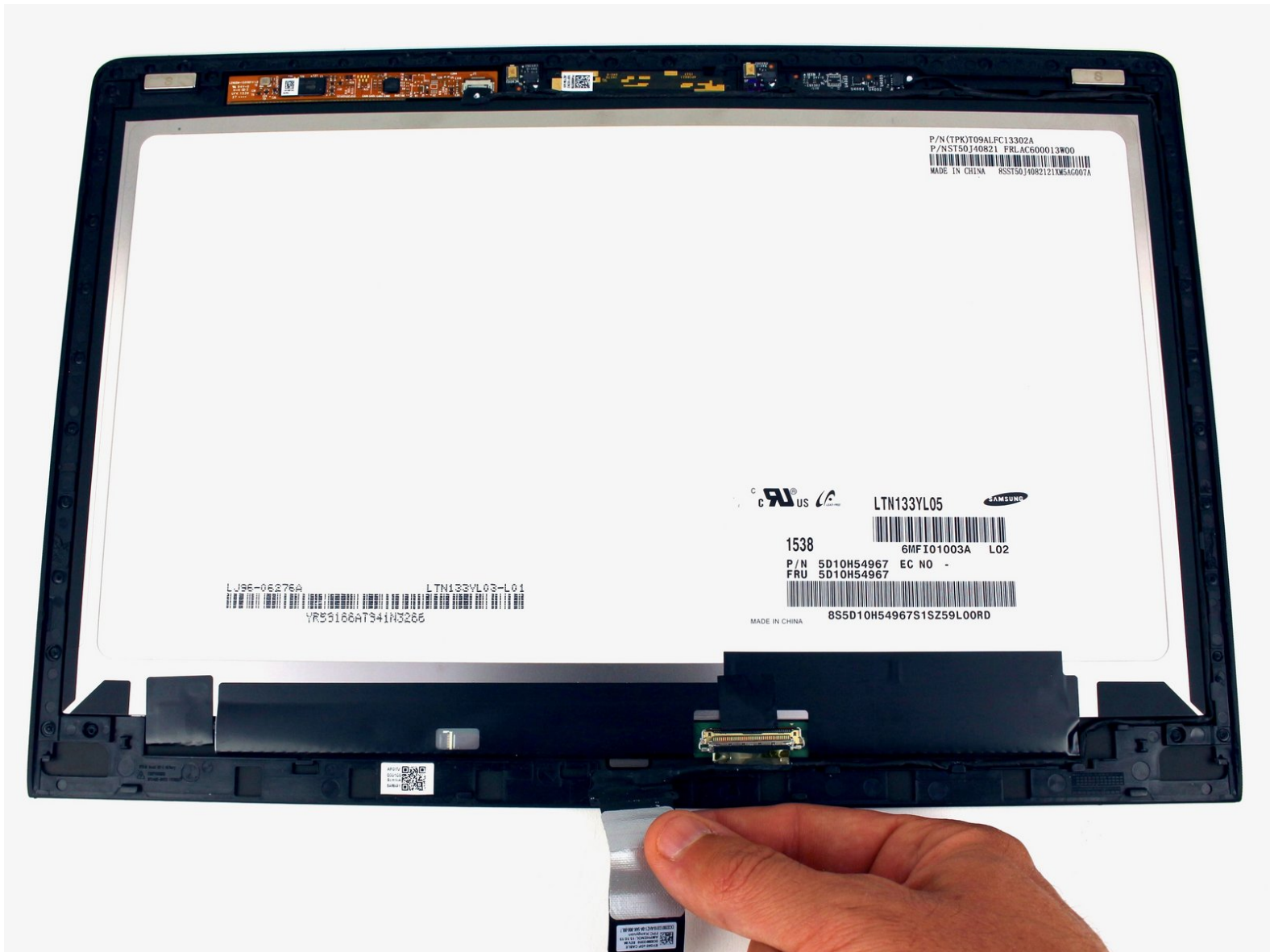




# Lenovo Yoga 900-13ISK Display Replacement

This guide will show you how to replace the...

Written By: Austin Blakely



## INTRODUCTION

This guide will show you how to replace the display in the Lenovo Yoga 900-13ISK. The display on the Lenovo Yoga 900 has full touch capabilities, allowing the screen to be used as a tablet. However, the digitizer is integrated into the display and bezel, so replacing any one of these three components individually will require specialized tools and a lot of patience. Instead, this guide will focus on replacing the display, touch control board, screen/bezel, and digitizer as a single unit.

Note that the boards and cable connectors inside of the display assembly are extremely delicate, and patience should be exercised when working inside. To get inside the display assembly also requires you to cut away adhesive strips holding the assembly together. To ensure that your new display adheres to the back panel properly, you may want to clean and remove any old adhesive from the device and replace with some fresh adhesive strips. However, all of this can be circumvented by [replacing the display assembly as a single unit](#) instead.

If your Lenovo Yoga 900 has a cracked, broken, glitchy, or otherwise problematic display, or if it has lost its touchscreen capabilities, replacing it should return your computer to working condition.

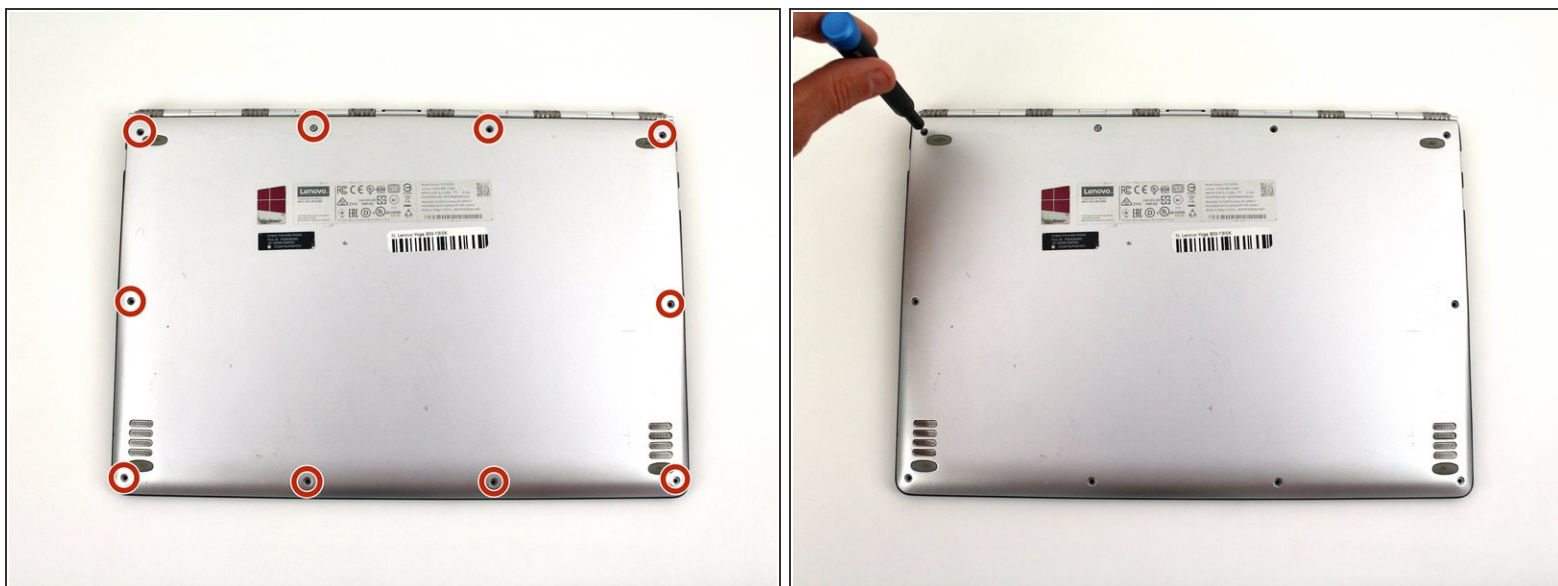
Be sure to unplug and completely turn off your device before you start working.



### TOOLS:

- [iFixit Opening Picks set of 6](#) (1)
- [iOpener](#) (1)
- [T5 Torx Screwdriver](#) (1)
- [Spudger](#) (1)
- [Phillips #00 Screwdriver](#) (1)

## Step 1 — Back Cover



- Using a T5 Torx screwdriver, remove the ten 5.5 mm screws from the back case of the laptop.

## Step 2



- Use a spudger to pry open the back case at the hinges of the laptop.
  - ❗ There are plastic clips around the perimeter of the case holding down the back cover. These will need to be popped off as the cover is removed.
- Use your fingers to completely pop off the back cover.



## Step 3 — Battery



- Remove the five 3.6 mm screws from the battery with a Phillips #00 screwdriver.

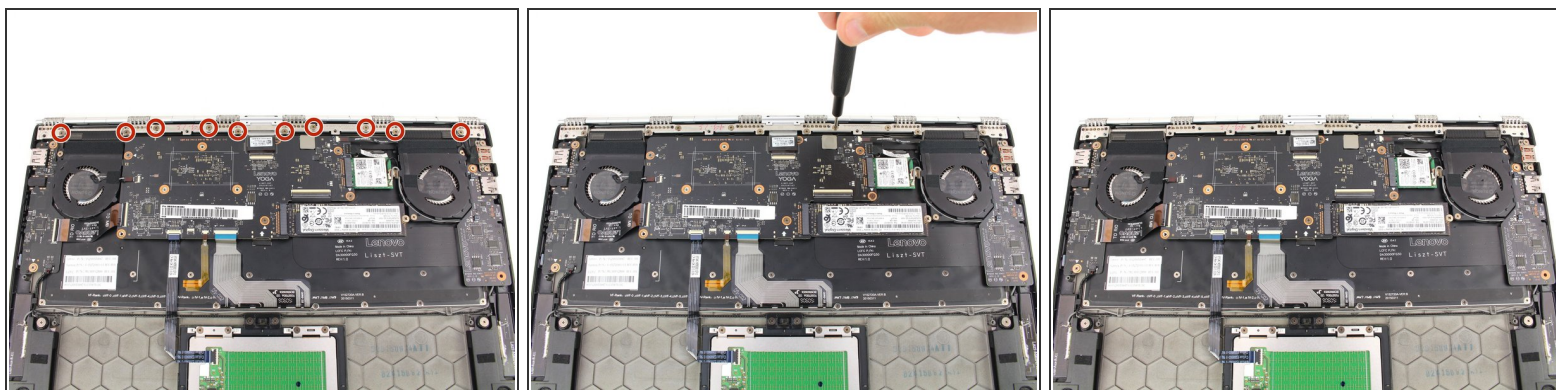
## Step 4



- Grab the bottom corners of the battery and gently pull the battery until the cable disconnects from the connector on the motherboard.

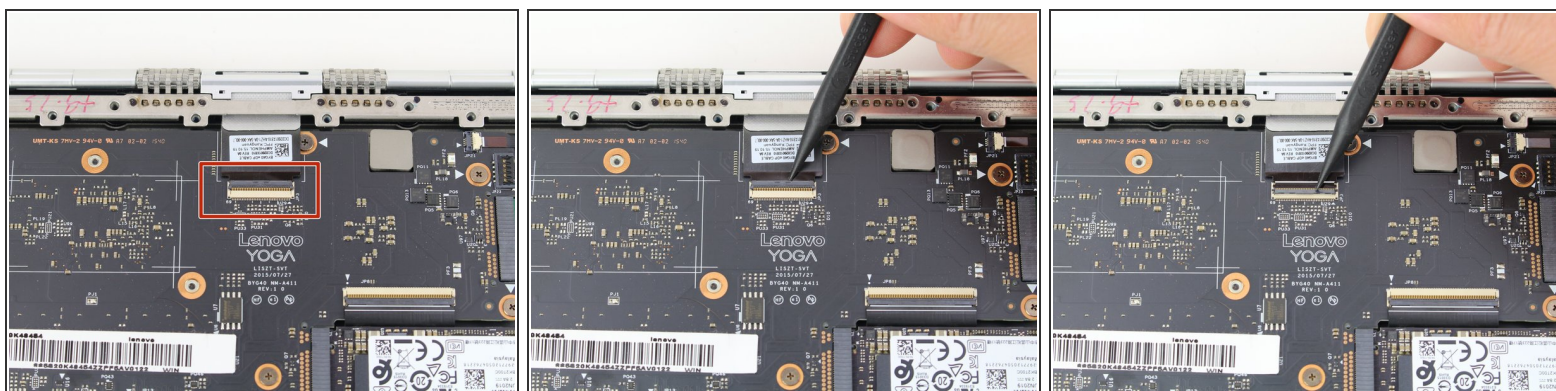
- ☑ While reassembling, use a plastic spudger to push the battery cable into the connector on the underside of the motherboard. This will be easier to do before the screws are replaced.

## Step 5 — Display Assembly



- Remove the ten 3.6 mm screws from the hinge bracket with a Phillips #00 screwdriver.

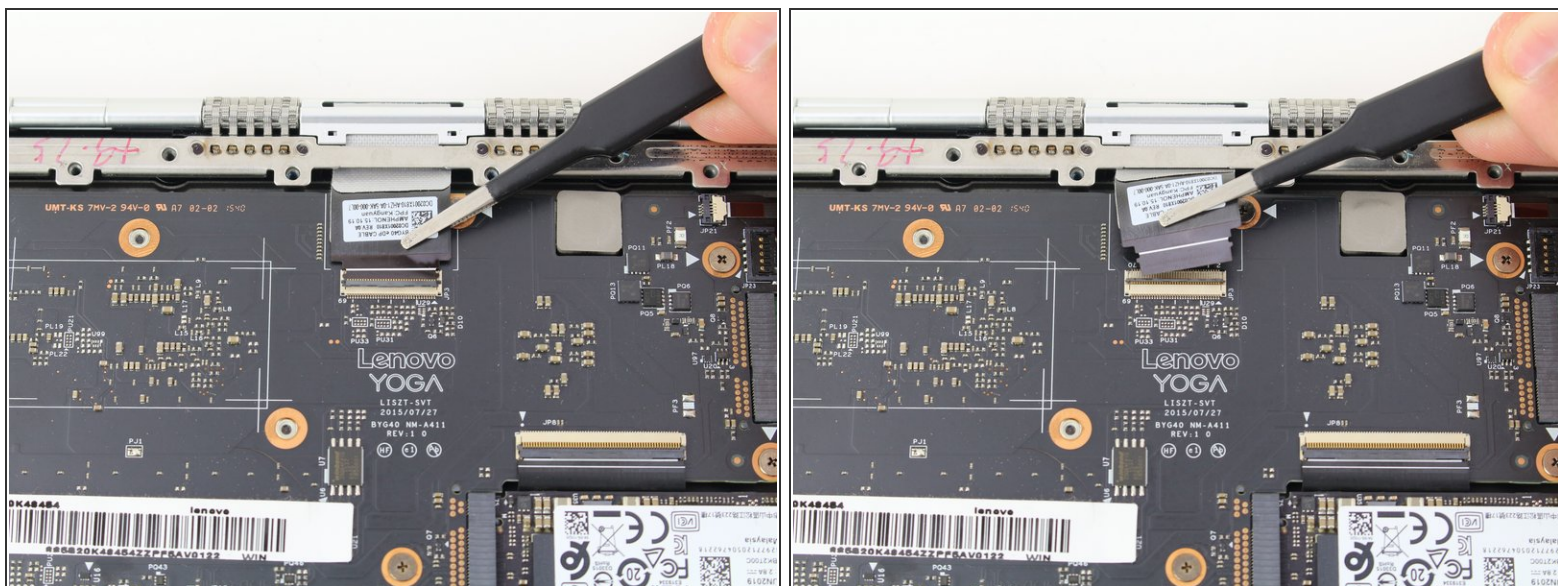
## Step 6



- Use the pointed end of a spudger to lift the hinged locking flap of the display [ZIF connector](#).

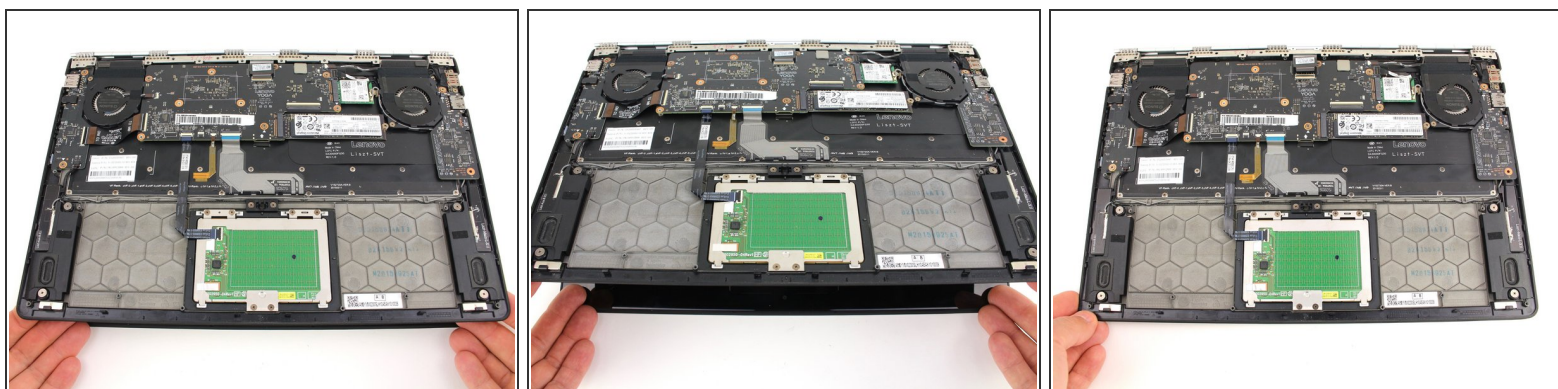


## Step 7



- Pull out the display cable with a pair of blunt nose tweezers.

## Step 8



- Open the laptop to a 45° angle, then close the laptop.
  - ① This raises the hinge, which will stay open as the bottom case is lowered.

## Step 9



- Slide the bottom case away from the hinge.
- ⓘ If the hinge is catching on the case, either go back to the previous step and open the case a bit more, or manually open the hinge with your fingers.

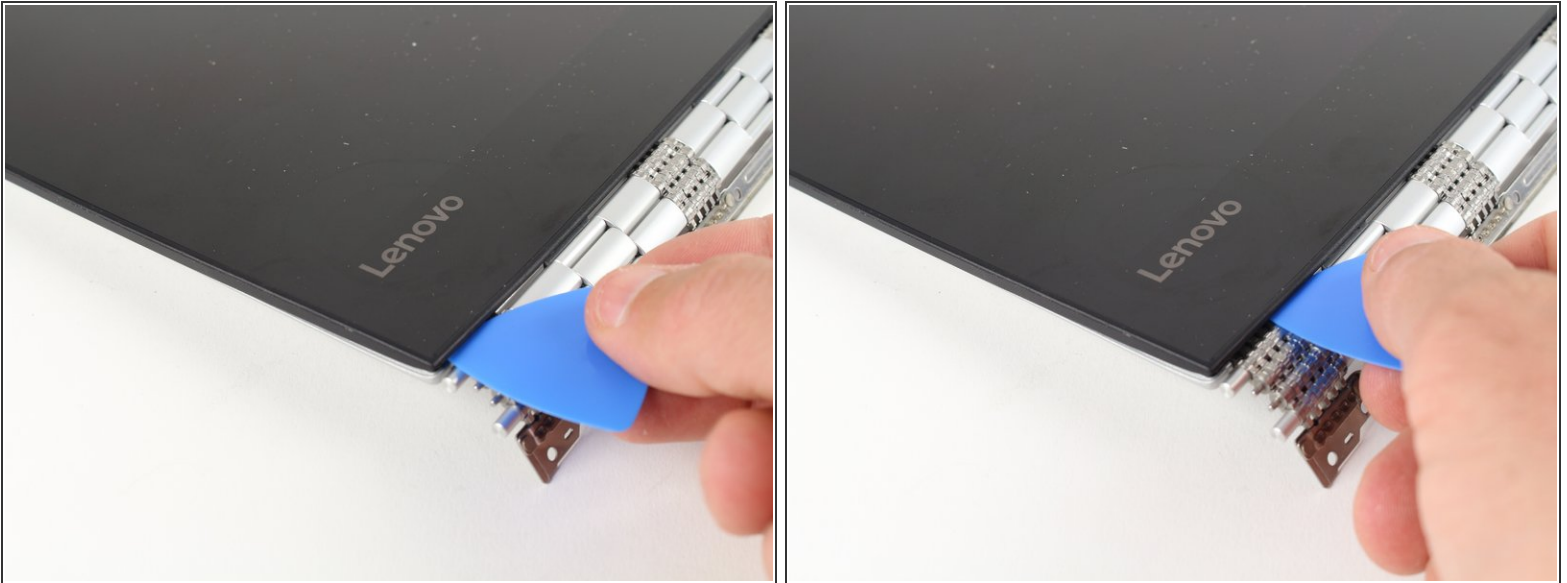
## Step 10 — Display Opening Prereq



- Apply heat along the bottom and left edges of the screen, either with a heat gun or iOpener.
- ⓘ Check out our [iOpener Instructions](#) if you need help!



## Step 11



- Insert an opening pick into the corner of the screen and slide it around slightly to create an opening.

## Step 12



- Insert a second opening pick and slide it along the side of the display, cutting away the adhesive.

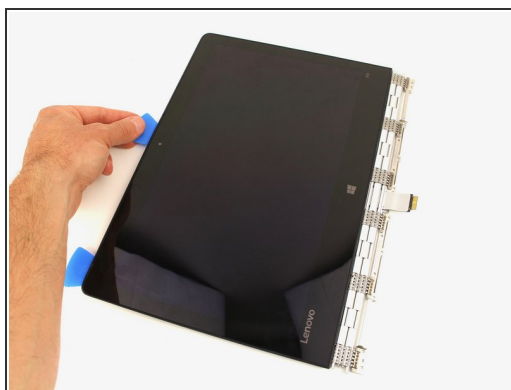


## Step 13



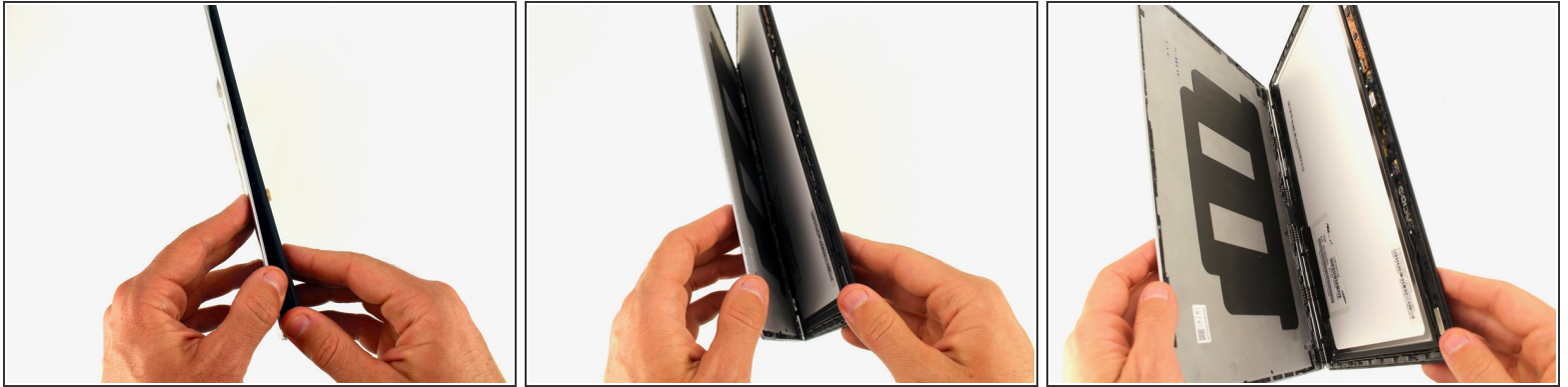
- Use a heat gun or iOpener to apply heat to the top and side edge that have not yet been opened.

## Step 14



- Continue cutting away the adhesive on the top and side edges of the display.

## Step 15



- Open the display casing along the top edge.

## Step 16



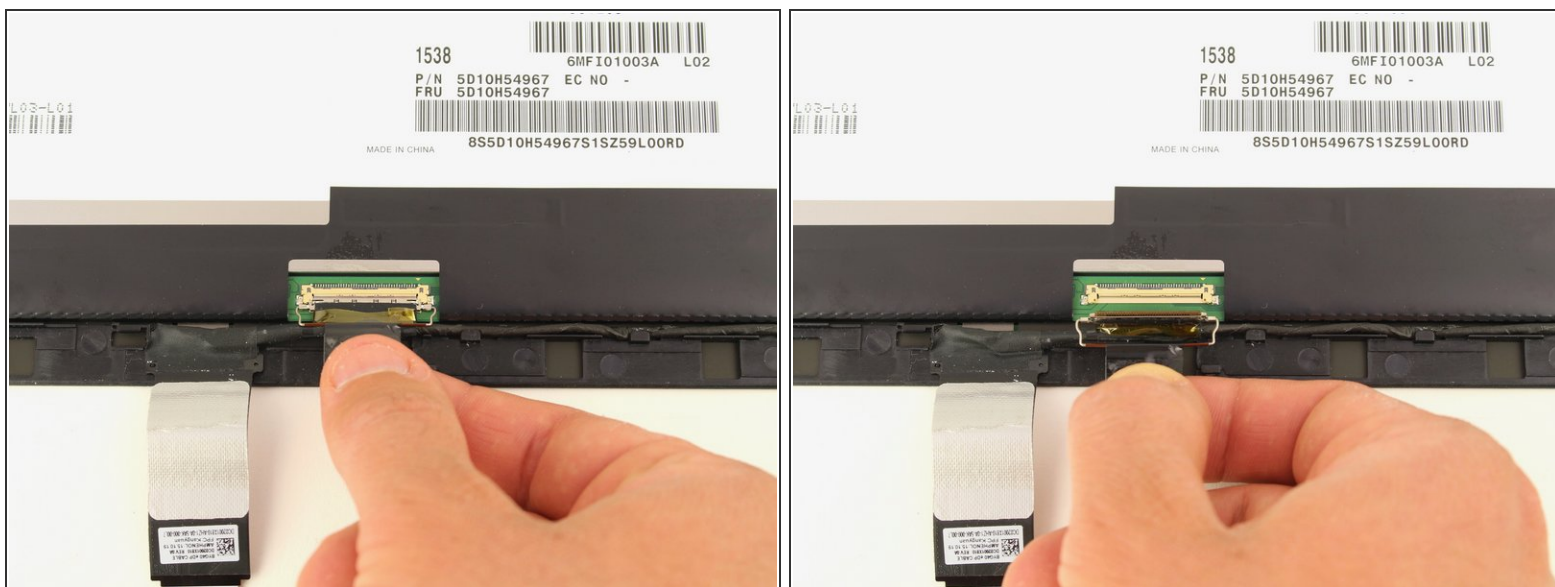
- Pull the display cable out from the hinge mechanism.

## Step 17 — Display



- Peel up the small strip of tape wrapped around the locking bar of the display cable connector.

## Step 18



- Pull the tape downward to unplug the display cable.



## Step 19



- Gently pull the cable out from the routing to free it from the hooks along the edge of the screen.

## Step 20

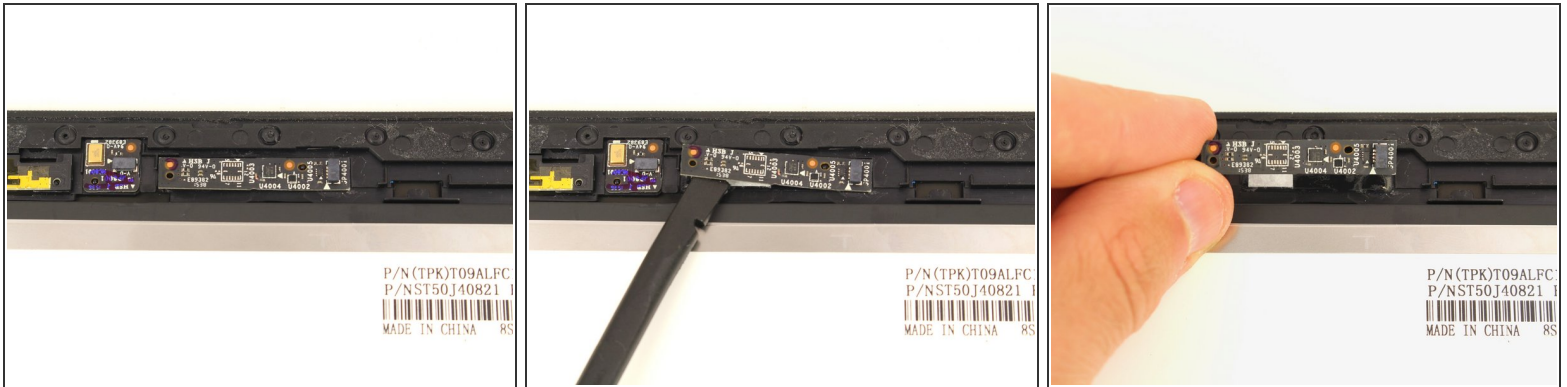


- Gently unplug the five cables on the control boards on the top edge of the display with a pair of blunt nose tweezers.

**⚠ Be extremely cautious as you handle these cables, as they are easily broken. If the pair of tweezers doesn't work for you, you can gently wiggle the cables back and forth with your fingers to ease them out from the connectors.**

- Remove the display cable.

## Step 21



- Gently pry up any of the boards that are missing from your new display with a nylon spudger and put them in the same place on the new display.
  - ⚠ **Emphasis on the 'gently'—we had two of these boards snap or bend significantly while trying to get them off. Be particularly cautious when prying up the yellow-accented webcam board in the center, as the adhesive is quite strong.**
- ⓘ The touch control board on the far left is wired into the digitizer and cannot be removed. Your new display should come with this board already in place.

To reassemble your device, follow these instructions in reverse order.