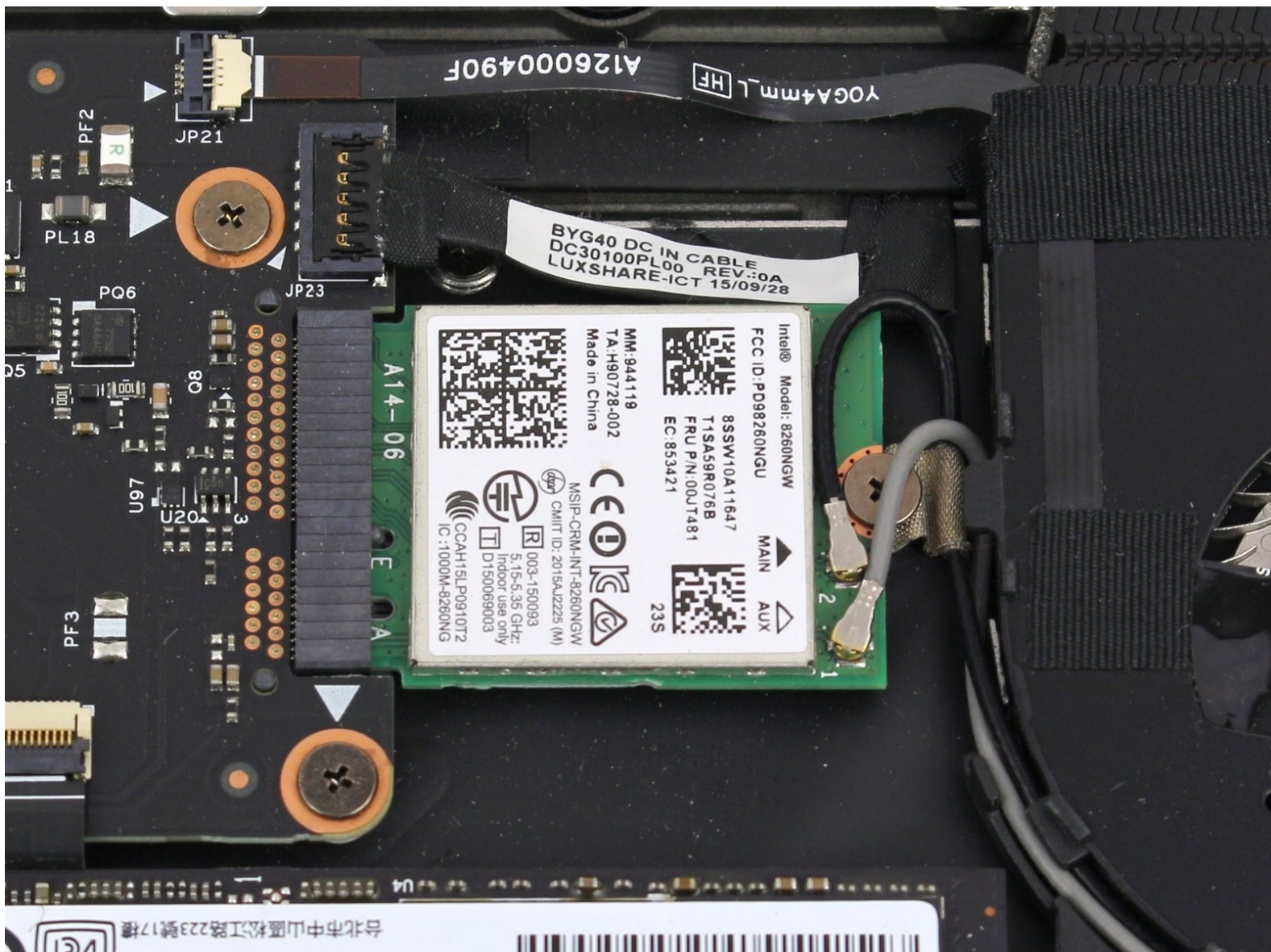




# Lenovo Yoga 900-13ISK Wi-Fi Card Replacement

This repair guide will demonstrate the process...

Written By: Austin Blakely



## INTRODUCTION

This repair guide will demonstrate the process of replacing the Wi-Fi card in the Lenovo Yoga 900-13ISK 2-in-1 computer. The Wi-Fi card is responsible for facilitating wireless connections between your laptop and other devices or networks. It is connected to an antenna, usually located in the top case behind the screen, by two coaxial cables.

If you are experiencing connectivity issues, such as having trouble connecting to a Wi-Fi network or bluetooth device, replacing the Wi-Fi card may alleviate these issues. The Wi-Fi card is also known as the wireless card and WLAN card, so these terms may be useful to include in searches while looking for a replacement part. Be sure while you are working that both coaxial cables are firmly seated on the Wi-Fi card, as the card will not function without both connections.

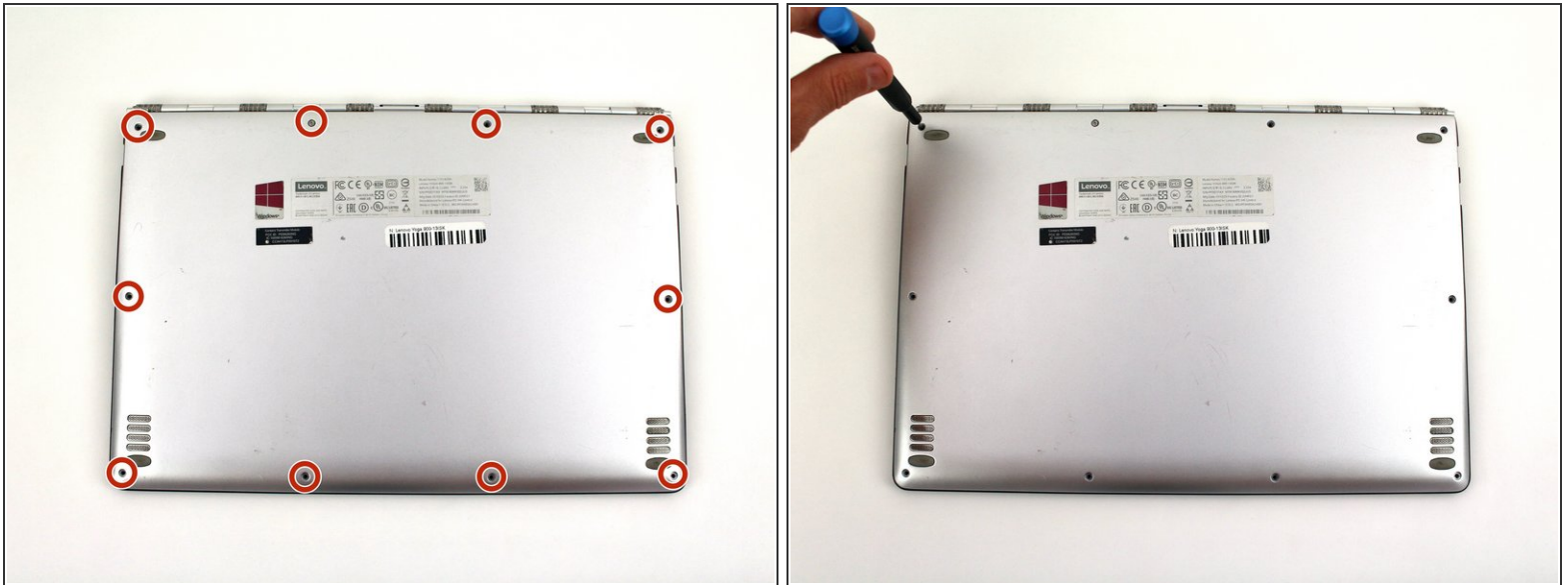
Be sure to unplug and completely turn off your device before you start working.



### TOOLS:

- [T5 Torx Screwdriver](#) (1)
  - [Spudger](#) (1)
  - [Phillips #00 Screwdriver](#) (1)
-

## Step 1 — Back Cover



- Using a T5 Torx screwdriver, remove the ten 5.5 mm screws from the back case of the laptop.

## Step 2



- Use a spudger to pry open the back case at the hinges of the laptop.
  - ❗ There are plastic clips around the perimeter of the case holding down the back cover. These will need to be popped off as the cover is removed.
- Use your fingers to completely pop off the back cover.



## Step 3 — Battery



- Remove the five 3.6 mm screws from the battery with a Phillips #00 screwdriver.

## Step 4



- Grab the bottom corners of the battery and gently pull the battery until the cable disconnects from the connector on the motherboard.

- ☑ While reassembling, use a plastic spudger to push the battery cable into the connector on the underside of the motherboard. This will be easier to do before the screws are replaced.

## Step 5 — Wi-Fi Card



- Pry up the white and black coaxial cables from the Wi-Fi card using a spudger.
- Move the cables to the side.

## Step 6



- Using a Phillips #00 screwdriver, remove the 2.2 mm screw holding down the Wi-Fi card.
- ⓘ The Wi-Fi card may pop up to rest at an angle to the motherboard after the screw is removed.



## Step 7



- Pull the Wi-Fi card out from the connector on the motherboard.

To reassemble your device, follow these instructions in reverse order.