



# Lenovo Yoga 900-13ISK Solid State Drive Replacement

This repair guide will show you how to replace...

Written By: Austin Blakely



## INTRODUCTION

This repair guide will show you how to replace the Solid State Drive (SSD) in your Lenovo Yoga 900 13" 2-in-1 laptop computer (900-13ISK). The SSD is responsible for storing long term memory on your computer, as well as the operating system, so problems booting the computer, corrupted data, or tumultuous load times could be symptoms of a failed or failing SSD. Replacing the SSD should alleviate any of these symptoms.

Be sure to unplug and completely turn off your device before you start working.



### TOOLS:

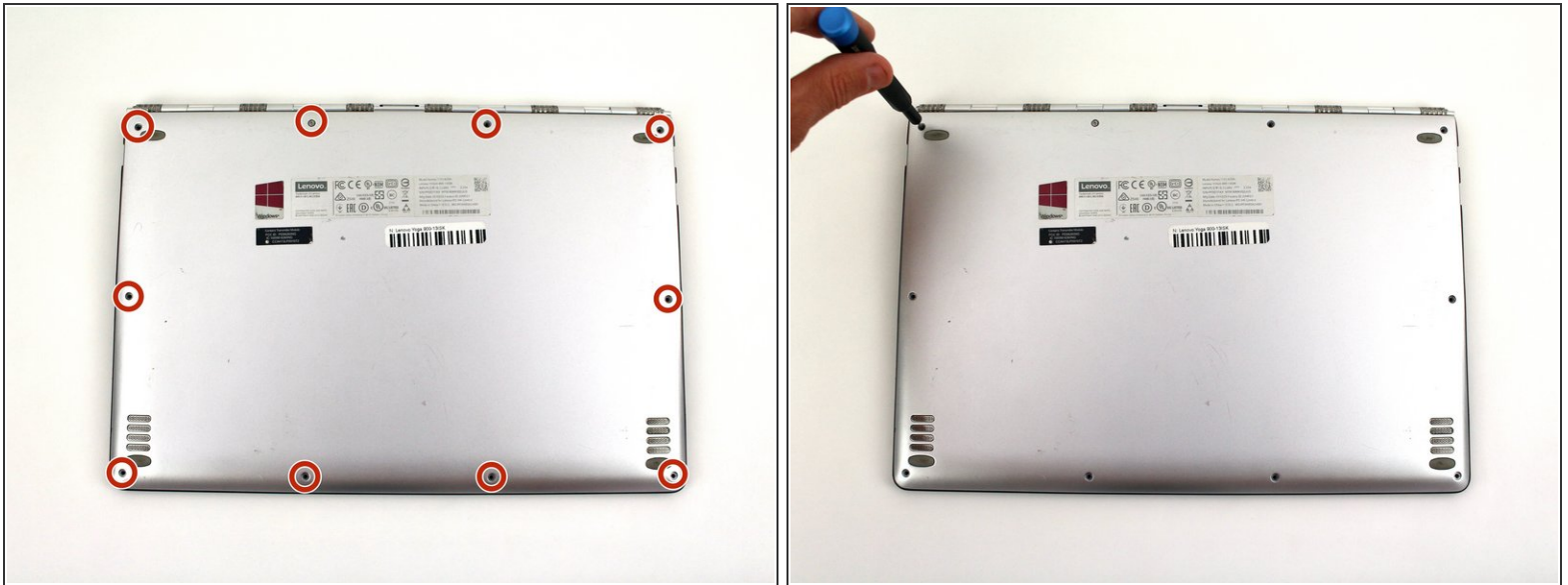
- [T5 Torx Screwdriver](#) (1)
- [Spudger](#) (1)
- [Phillips #00 Screwdriver](#) (1)



### PARTS:

- [Crucial P3 NVMe PCIe M.2 2280SS SSD - solid performance, switching from HDD or SATA to NVMe™](#) (1)
- [Crucial P3 Plus NVMe PCIe M.2 2280SS SSD - fast Gen4 NVMe™ storage for data-intensive applications](#) (1)
- [Crucial P5 Plus NVMe PCIe M.2 2280SS SSD - professionals, creatives, and hardcore gamers](#) (1)

## Step 1 — Back Cover



- Using a T5 Torx screwdriver, remove the ten 5.5 mm screws from the back case of the laptop.

## Step 2



- Use a spudger to pry open the back case at the hinges of the laptop.
  - ❗ There are plastic clips around the perimeter of the case holding down the back cover. These will need to be popped off as the cover is removed.
- Use your fingers to completely pop off the back cover.

## Step 3 — Battery



- Remove the five 3.6 mm screws from the battery with a Phillips #00 screwdriver.

## Step 4



- Grab the bottom corners of the battery and gently pull the battery until the cable disconnects from the connector on the motherboard.

- ☑ While reassembling, use a plastic spudger to push the battery cable into the connector on the underside of the motherboard. This will be easier to do before the screws are replaced.

## Step 5 — Solid State Drive



- Use a Phillips #00 screwdriver to remove the 2.7 mm screw that is holding down the SSD card.

## Step 6



- Pull the SSD card out of the port to the right.

To reassemble your device, follow these instructions in reverse order.