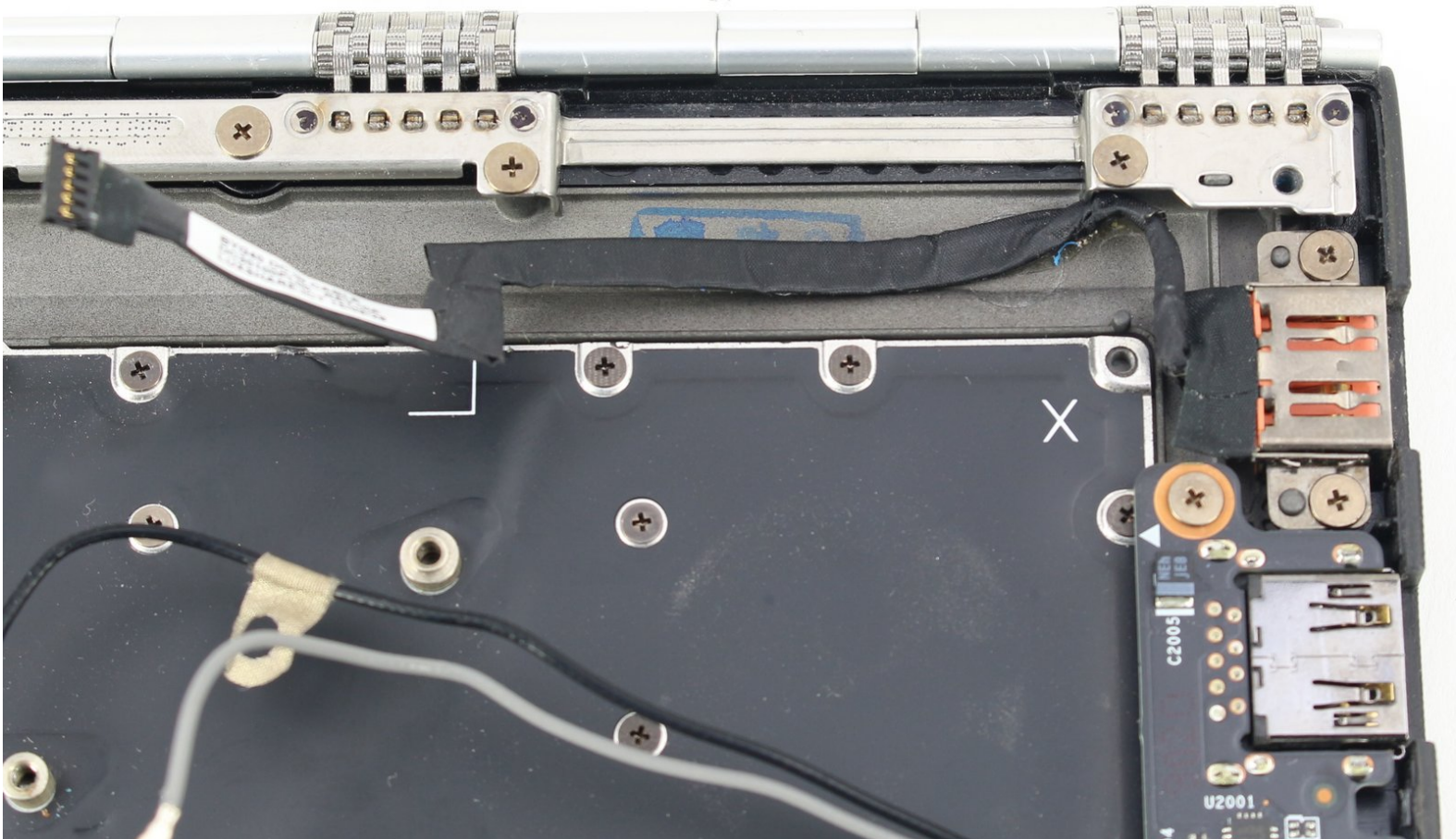




Lenovo Yoga 900-13ISK Charging Port Replacement

This guide will show you how to remove the...

Written By: Austin Blakely



INTRODUCTION

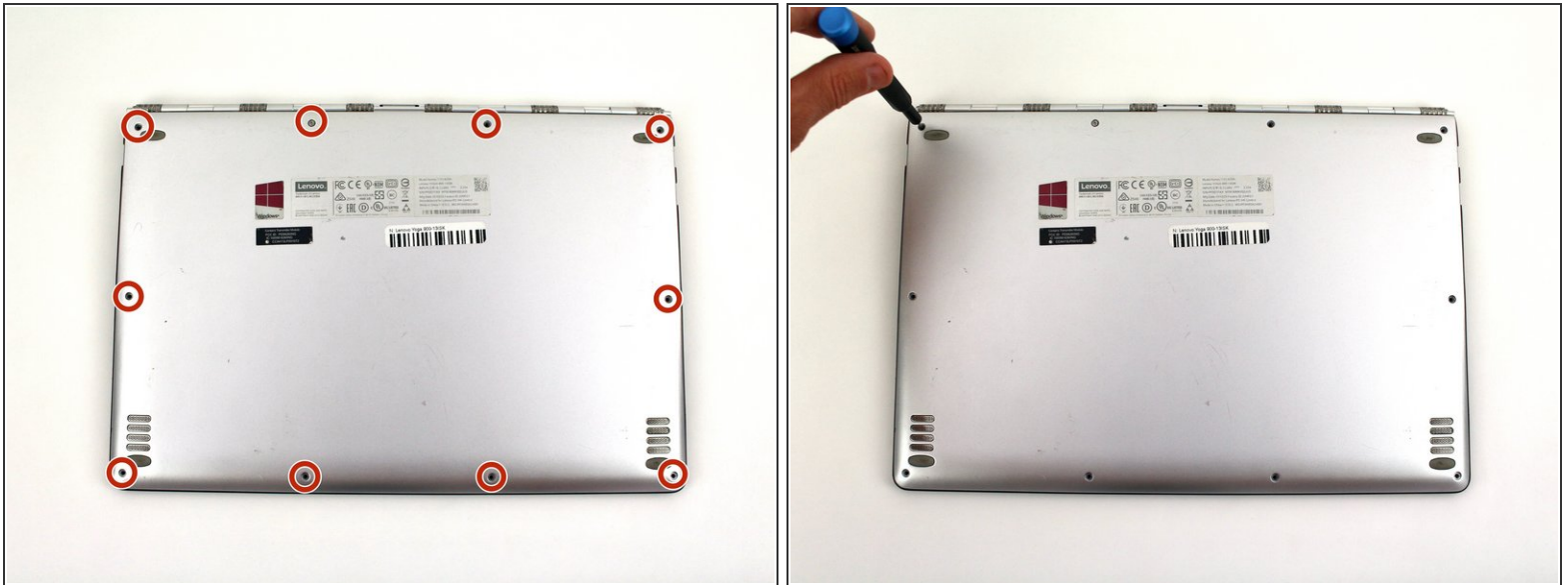
This guide will show you how to remove the charging port on the 13 inch Lenovo Yoga 900 (**900-13ISK**). Luckily, this component is completely modular, so you can replace it without sourcing a new motherboard or daughterboard. If your computer does not charge, or if your computer fails to turn on and you have already ruled out a faulty battery as the cause, replacing the charging port should fix the issue.

Be sure to unplug and completely turn off your device before you start working.

TOOLS:

- [T5 Torx Screwdriver](#) (1)
 - [Spudger](#) (1)
 - [Phillips #00 Screwdriver](#) (1)
 - [ESD Safe Tweezers Blunt Nose](#) (1)
-

Step 1 — Back Cover



- Using a T5 Torx screwdriver, remove the ten 5.5 mm screws from the back case of the laptop.

Step 2



- Use a spudger to pry open the back case at the hinges of the laptop.
 - ❗ There are plastic clips around the perimeter of the case holding down the back cover. These will need to be popped off as the cover is removed.
- Use your fingers to completely pop off the back cover.

Step 3 — Battery



- Remove the five 3.6 mm screws from the battery with a Phillips #00 screwdriver.

Step 4



- Grab the bottom corners of the battery and gently pull the battery until the cable disconnects from the connector on the motherboard.

- ☑ While reassembling, use a plastic spudger to push the battery cable into the connector on the underside of the motherboard. This will be easier to do before the screws are replaced.

Step 5 — Solid State Drive



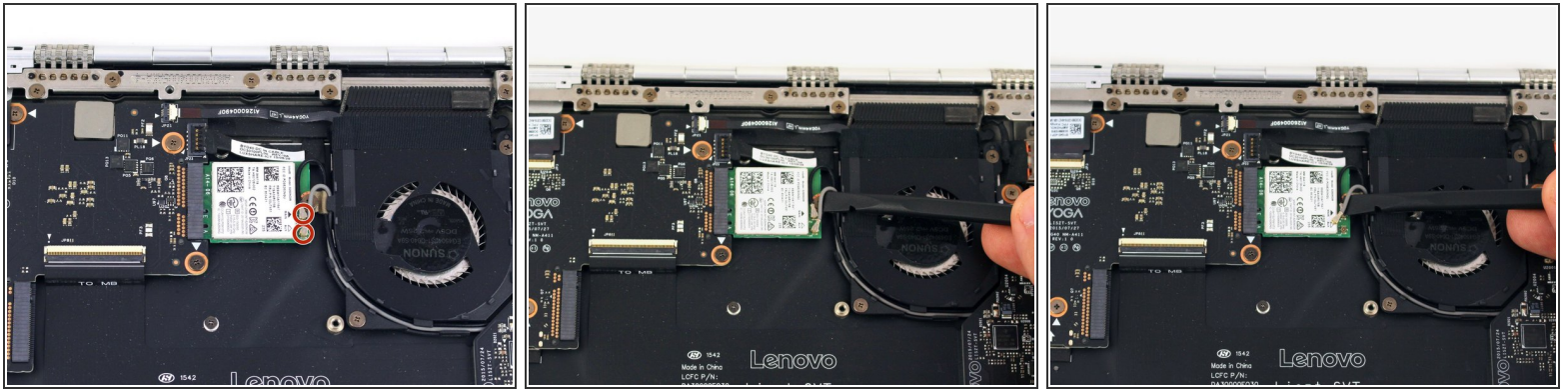
- Use a Phillips #00 screwdriver to remove the 2.7 mm screw that is holding down the SSD card.

Step 6



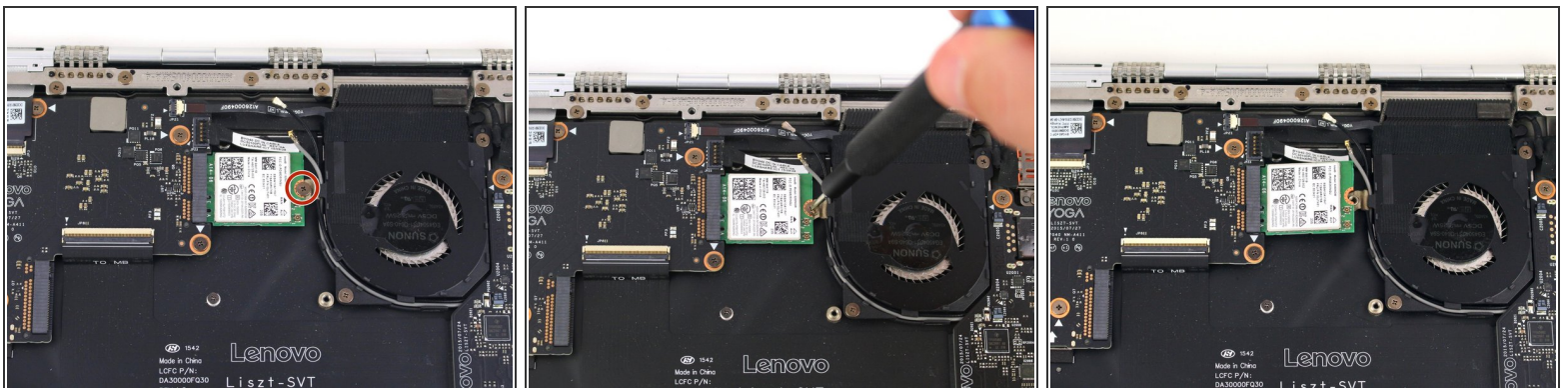
- Pull the SSD card out of the port to the right.

Step 7 — Wi-Fi Card Prereq



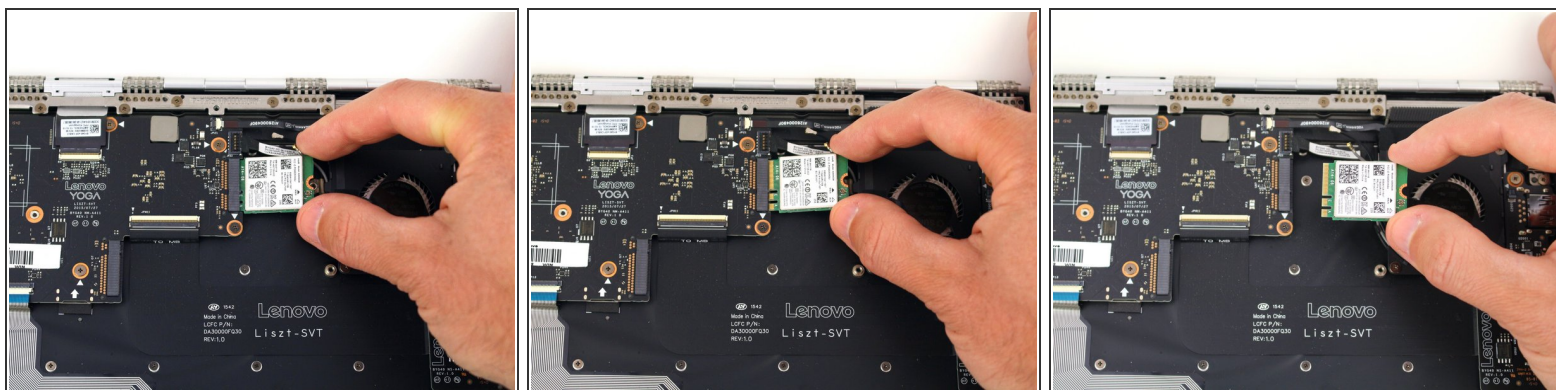
- Pry up the gray and black coaxial cables from the Wi-Fi card using a spudger.
- Move the cables to the side.

Step 8



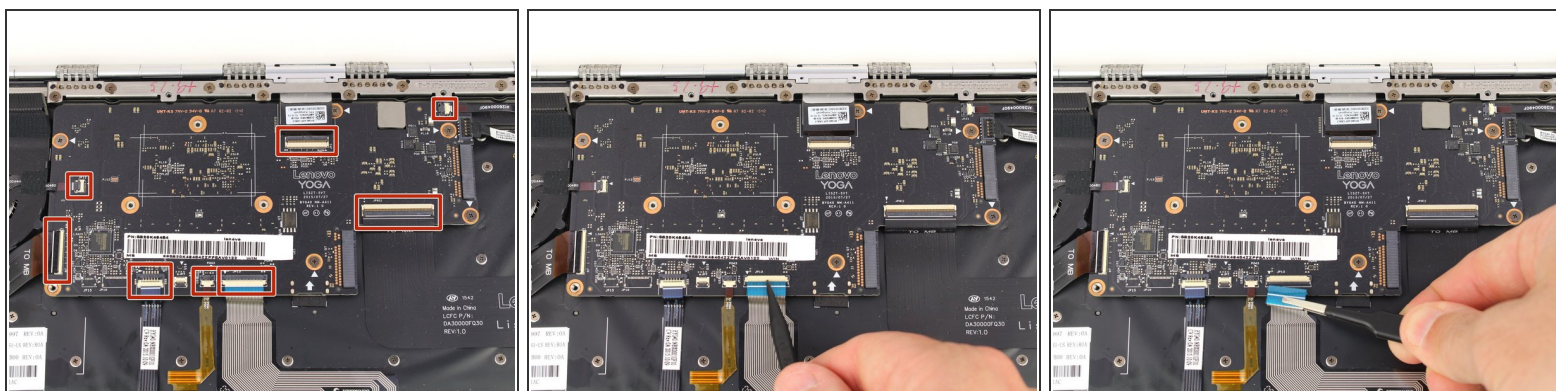
- Using a Phillips #00 screwdriver, remove the 2.2 mm screw holding down the Wi-Fi card.
- ⓘ The Wi-Fi card may pop up to rest at an angle to the motherboard after the screw is removed.

Step 9



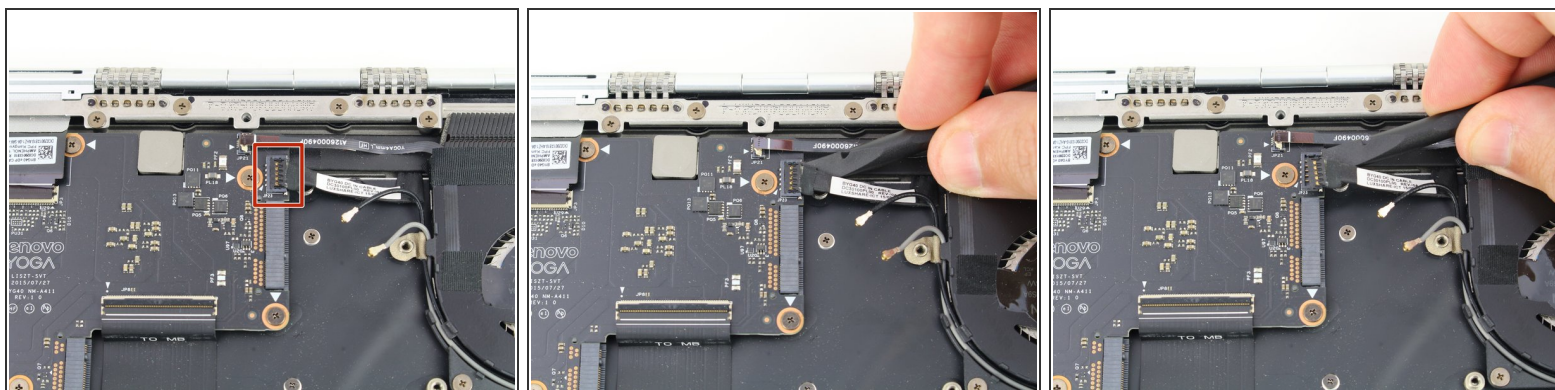
- Pull the WiFi card out from the connector on the motherboard.

Step 10 — Motherboard



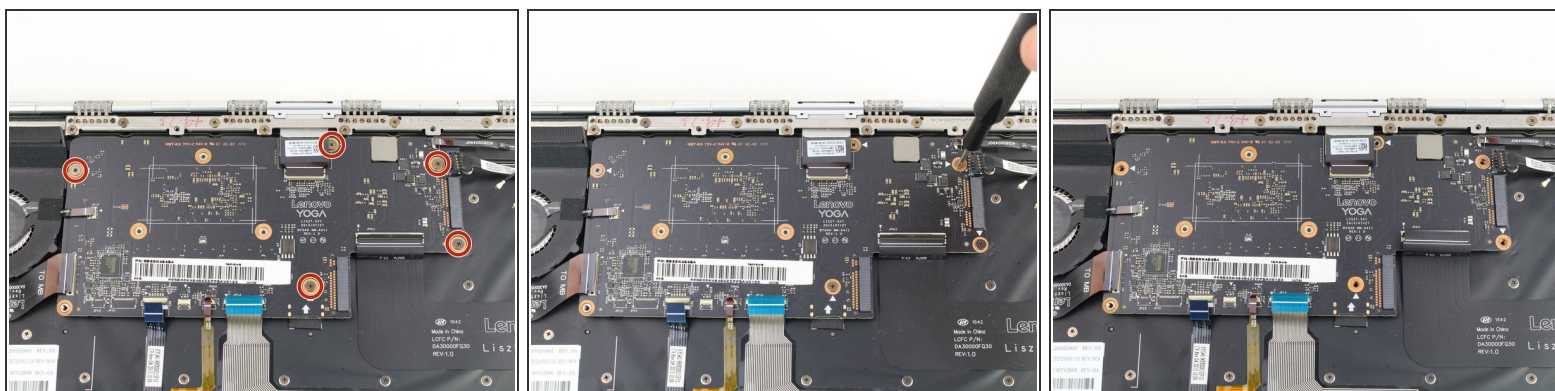
- Using the pointed end of a spudger, flip up the hinged locking tabs of the eight [ZIF connectors](#) on the motherboard.
- Pull the eight cables out from their connectors using a pair of blunt nose tweezers.

Step 11



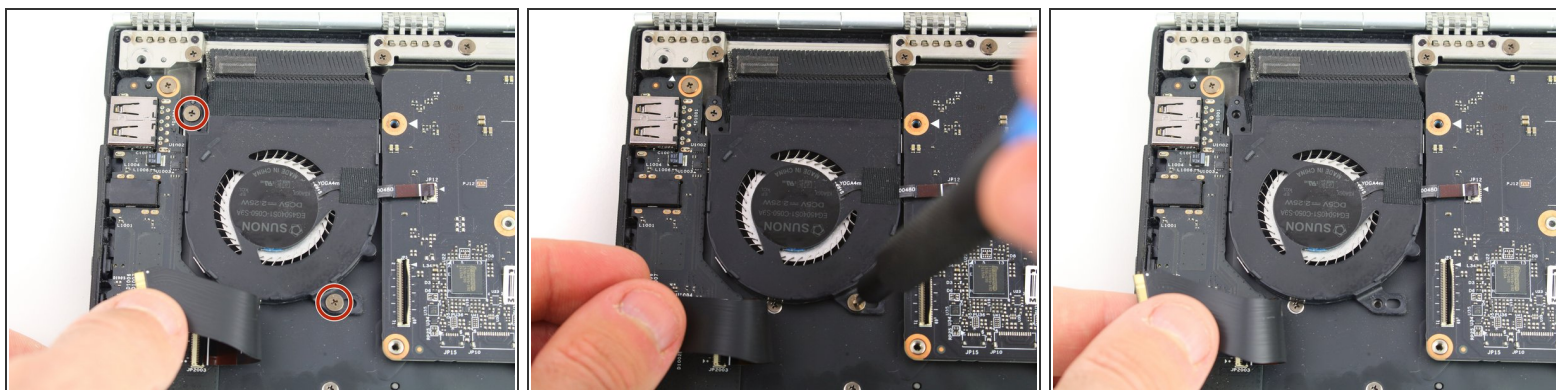
- Use a spudger to pry up the [press fit connector](#) on the right side of the motherboard.

Step 12



- Remove the five 3.6 mm screws from the motherboard using a Phillips #00 screwdriver.

Step 13



- Pull back the interconnect cable on the left side of the motherboard to reveal one of the fan screws for the left fan.
- Remove the two 3.6 mm screws from the left fan with a Phillips #00 screwdriver.

Step 14



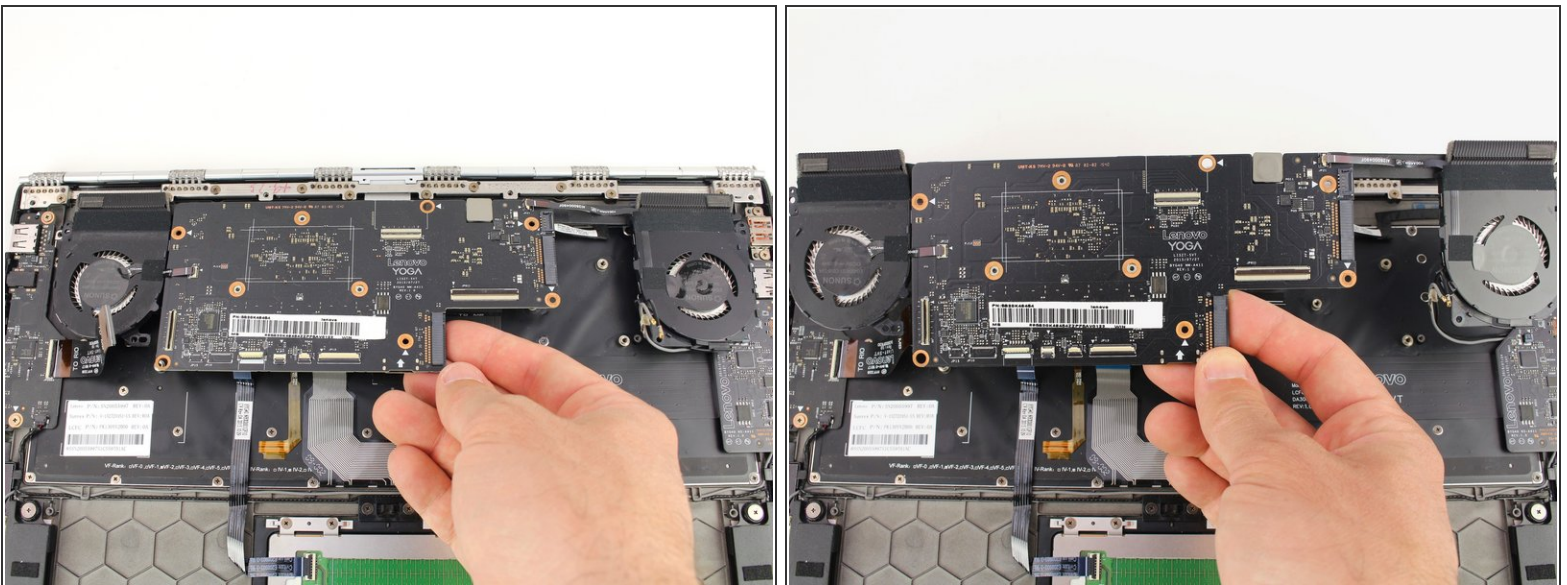
- Remove the two 3.6 mm screws from the right fan using a Phillips #00 screwdriver.

Step 15



- Unwind the black and white coaxial cables from the hooks on the right fan casing.

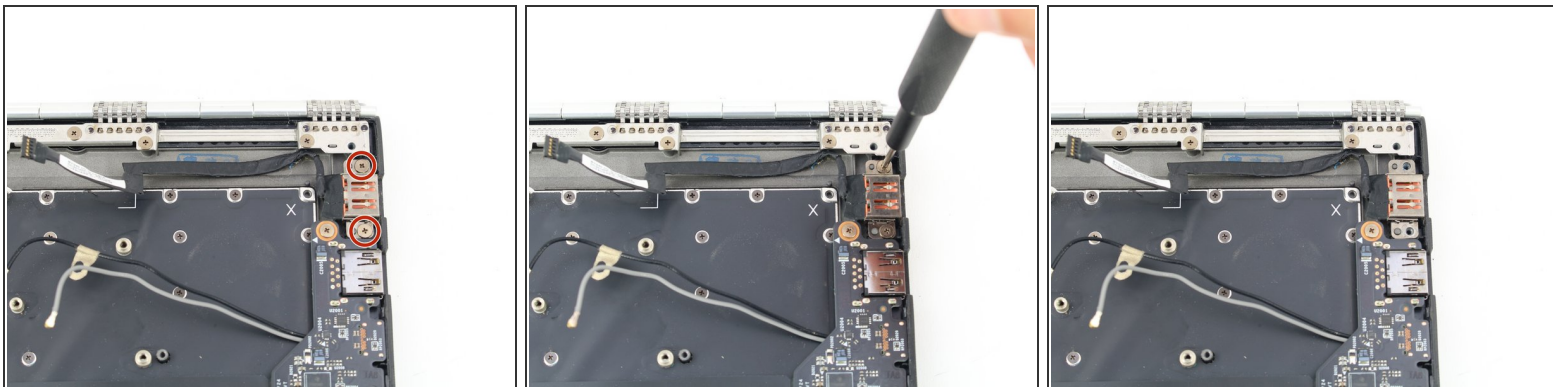
Step 16



- Lift the motherboard from the bottom edge and pull it up and out of the case.

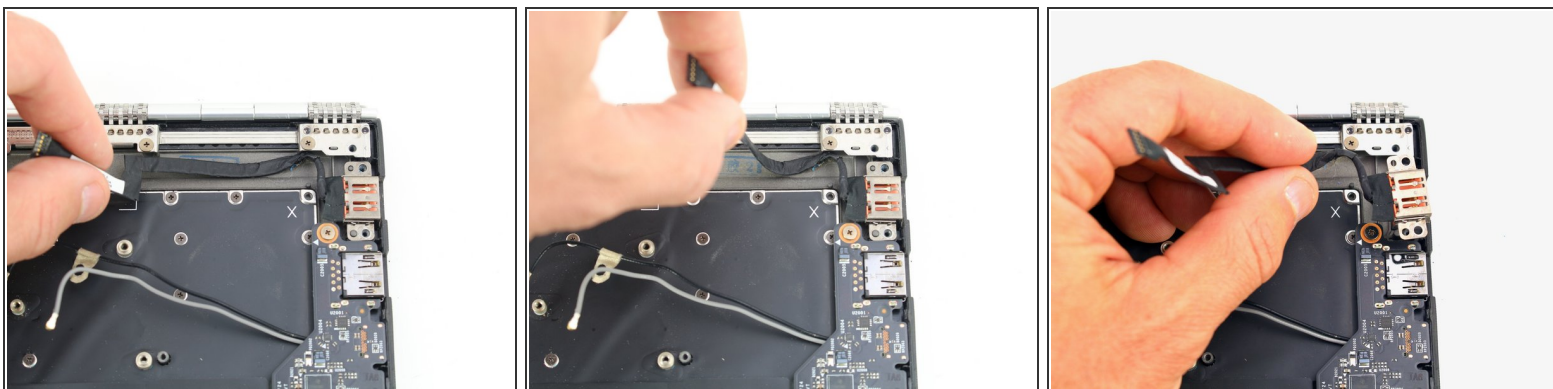
i If you need to remove the fan assembly to swap it over to your new motherboard, continue to follow along with the [heatsink guide](#).

Step 17 — Charging Port



- Remove the two 3.5 mm screws from the charging port with a Phillips #00 screwdriver.

Step 18



- Peel up the charging port cable and remove the charging port.

To reassemble your device, follow these instructions in reverse order.