



# Toshiba Satellite A205-S4577 Optical Drive Replacement

This guide will remove the optical drive.

Written By: Delaney Giacalone



---

## INTRODUCTION

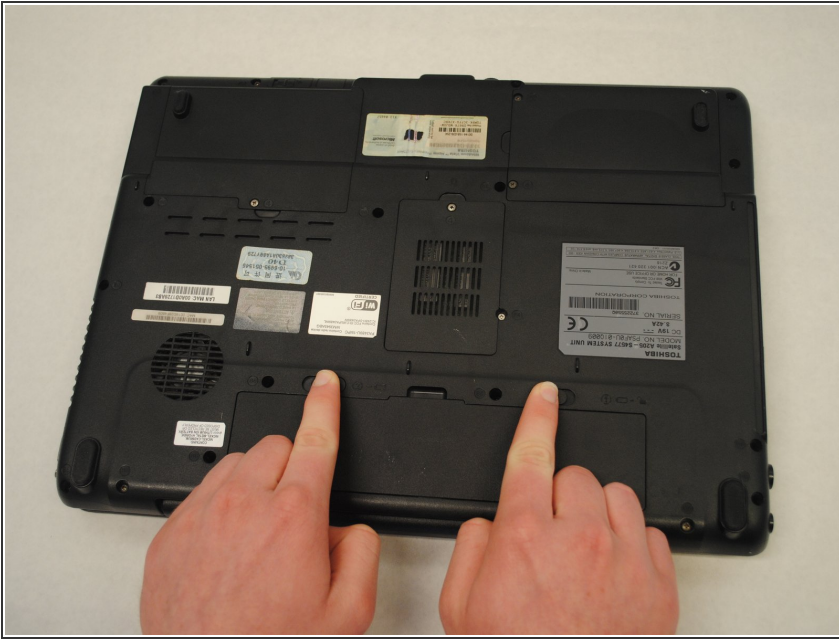
Whether it is time to upgrade or replace the optical drive, this guide will show the user how to remove the drive from the laptop.



### TOOLS:

- [Phillips #00 Screwdriver](#) (1)
-

## Step 1 — Battery



- Locate the two sliding locks indicated in the photo.
- Slide the right lock (labeled "1") to the right. It will remain in the unlocked position.
- Slide the left lock (labeled "2") to the left and hold it in place.

## Step 2



- While holding the left lock, place your finger in the indentation next to the battery and lift the battery out.

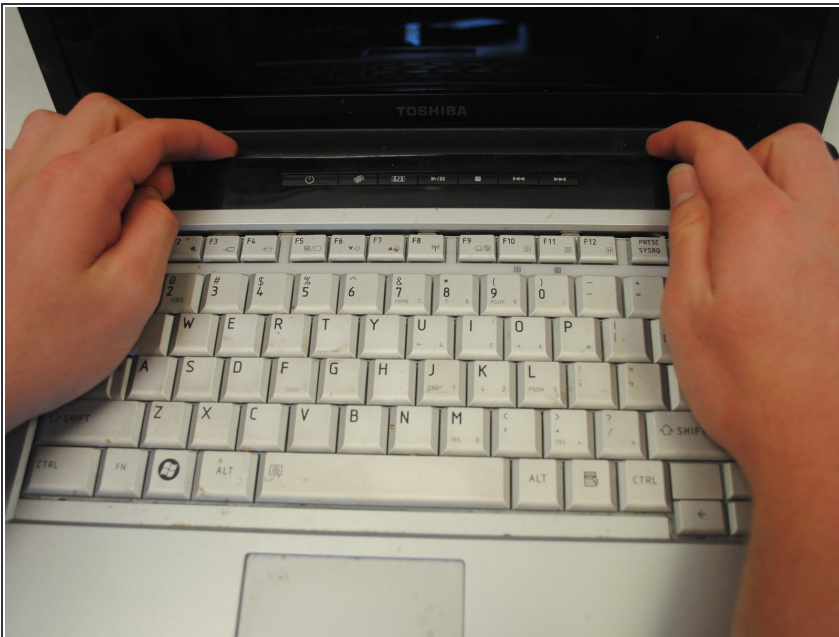


### Step 3 — Speaker Cover



- Remove the four screws indicated in the photos using a Phillips 00 Screwdriver. Left to right: 6mm button-head, 3mm flat-head, 6mm button-head, 6mm button-head.

### Step 4



- With your hands, grasp the speaker cover on the edge nearest to the screen.
- Pry the speaker cover upward.

## Step 5



- Remove the speaker cover. Your laptop will look like this photo when the speaker cover has been removed.

## Step 6 — Keyboard



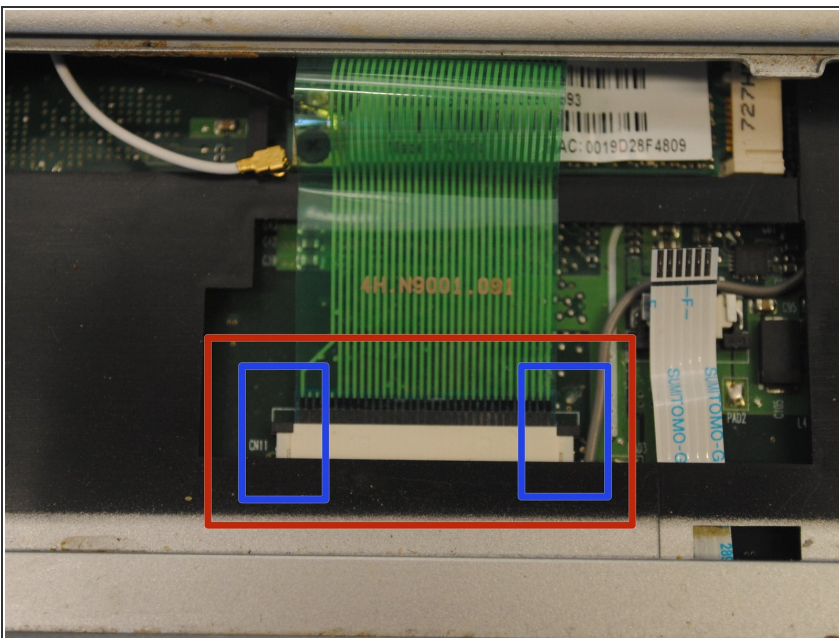
- Remove the two 4mm flat-head screws indicated in the photo.

## Step 7



- Slightly lift and ease the keyboard forward, toward the screen, until the tabs clear the case.
- When all the tabs are free, slowly lift the bottom of the keyboard while keeping the top of the keyboard angled down. Continue to carefully rotate the keyboard over until you can access the ribbon cable that is still connecting it to the computer.

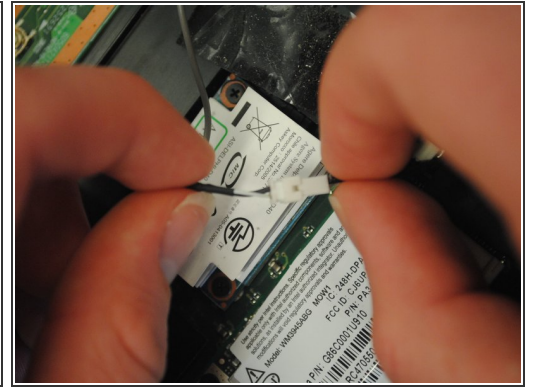
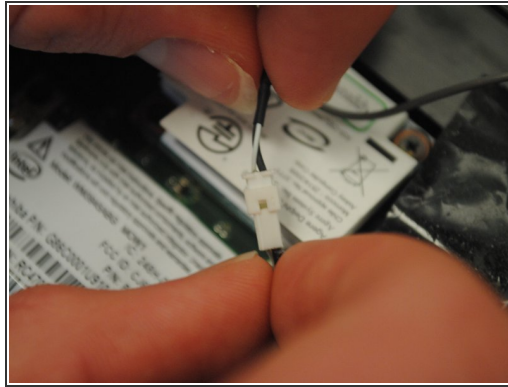
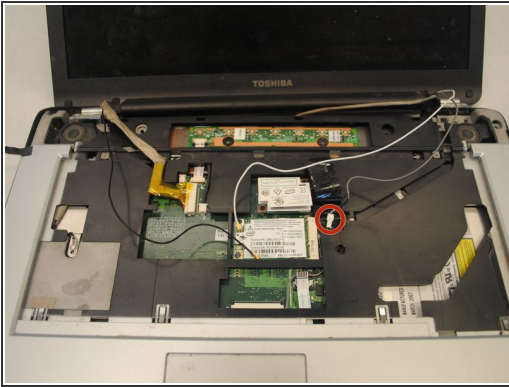
## Step 8



- The Ribbon Cable must be disconnected here to release the keyboard.
- Using a plastic splunger or the tip of your screwdriver gently push upward on the two black tabs securing the connection.
- When the black plastic bar running across the cable is unseated you can slowly and carefully pull the ribbon cable free.
- You can now lift and remove the keyboard.

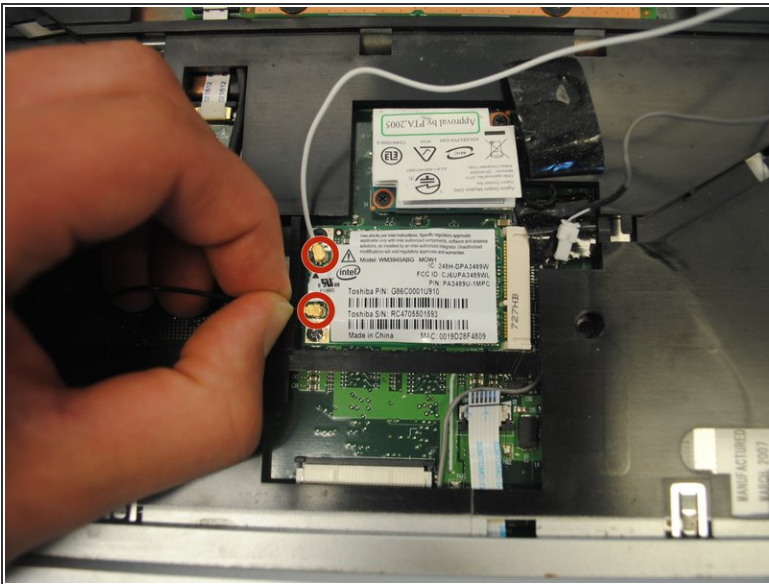


## Step 9 — Monitor



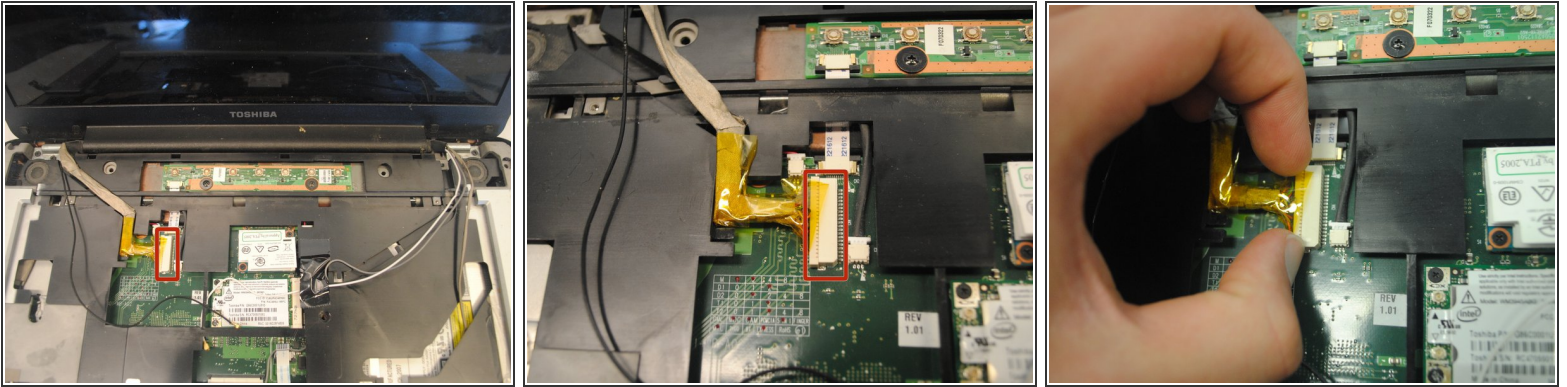
- Locate the gray wire on the right.
- Detach the white end by gently pulling each socket away from the other.

## Step 10



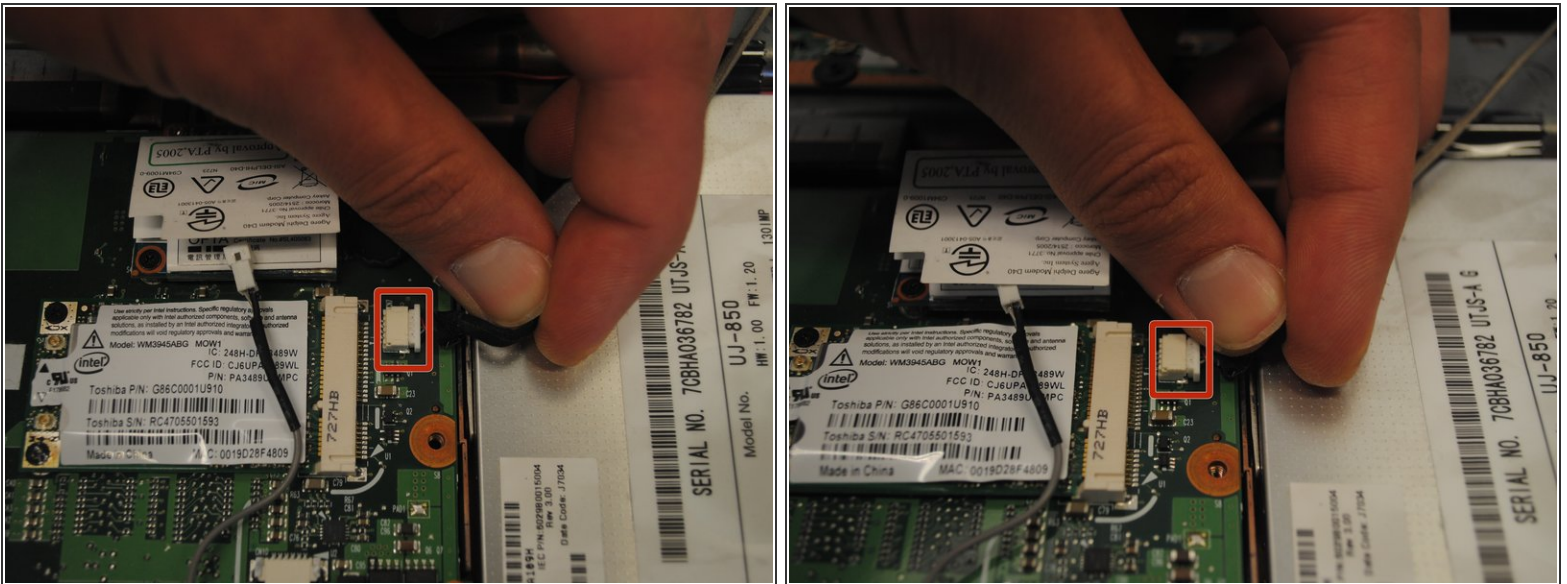
- On the left, locate the black and white wires with gold tips on the end.
- Pull up on the wires to detach them.

## Step 11



- Locate the thick tan cord on the left.
- Slide the tan cord as shown to detach it.

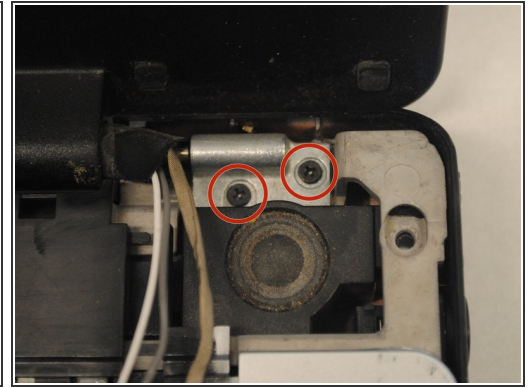
## Step 12



- On the right, locate the thick black wire with the white rectangular end.
- Pull up on it to detach it.



## Step 13



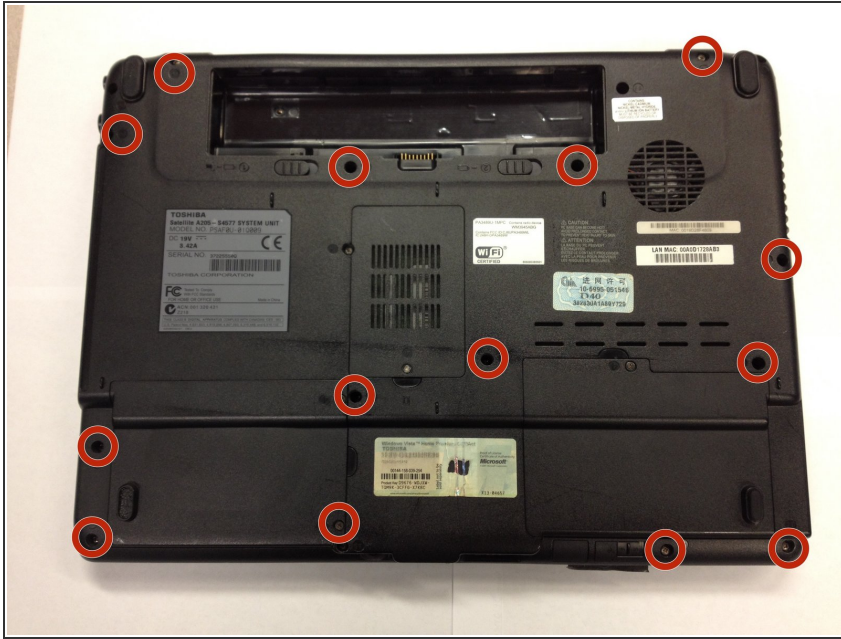
- Remove the four 8mm button-head screws that are located in the top right (2) and top left corners (2) of the front cover. Use a Phillips 00 Screwdriver.

## Step 14



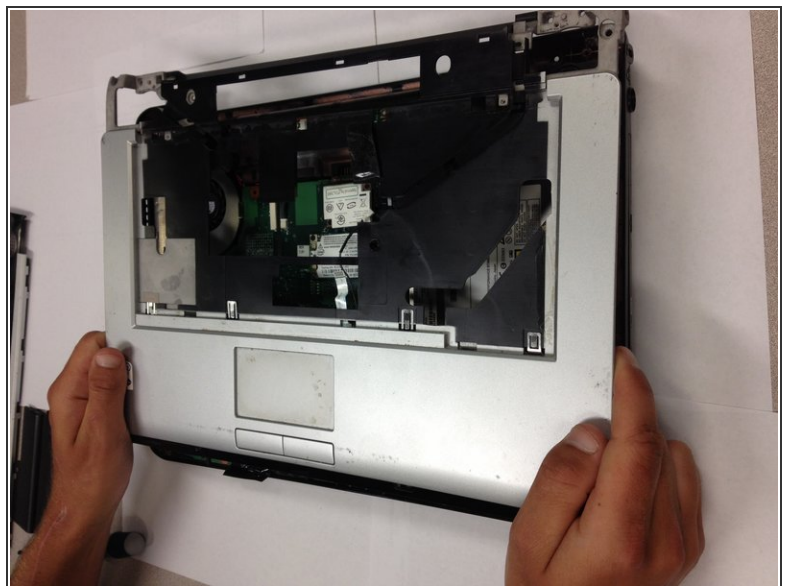
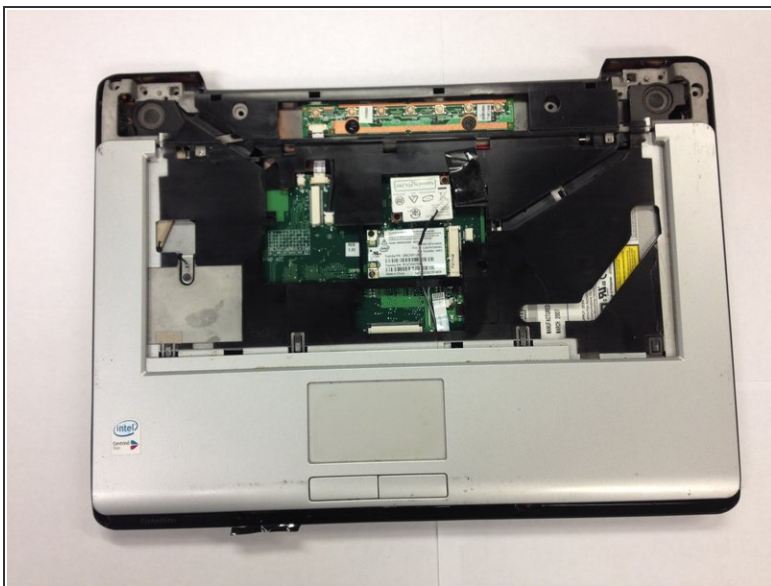
- Once all the wires are detached and screws are removed, pull up on the monitor to remove it.

## Step 15 — Front Cover



- Locate the screws that are shown in the image.
- Remove the fourteen 6mm button-head screws with a Phillips 00 Screwdriver.

## Step 16



- Lift up on the front cover to remove it.



## Step 17 — Optical Drive



- Locate the 4mm flat-head screw. Remove it using the Phillips 00 Screwdriver.

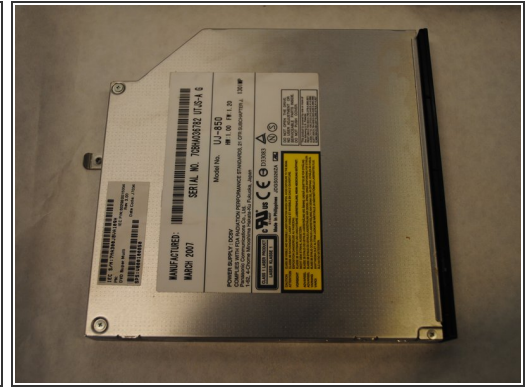
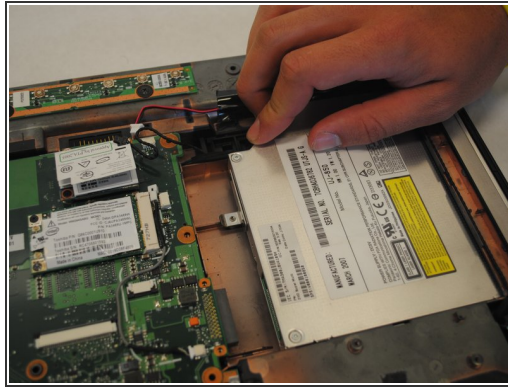
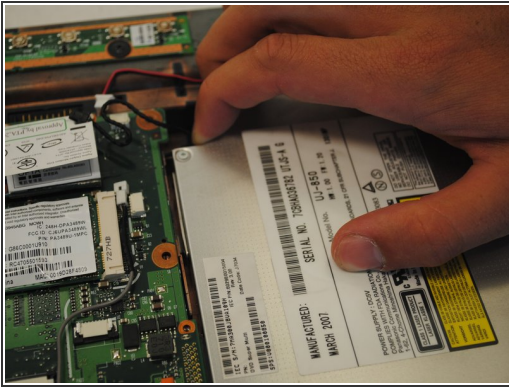
## Step 18



- Turn the computer over.
- Locate the optical drive on the right.



## Step 19



- Using two fingers, slide the optical drive toward the edge of the computer.
- Continue to slide the optical drive until it can be removed from the computer.

To reassemble your device, follow these instructions in reverse order.