



Toshiba Portege M400 Battery Replacement

Use this repair guide to replace the battery in your Toshiba Portege M400 that may have been damaged or just completely dead.

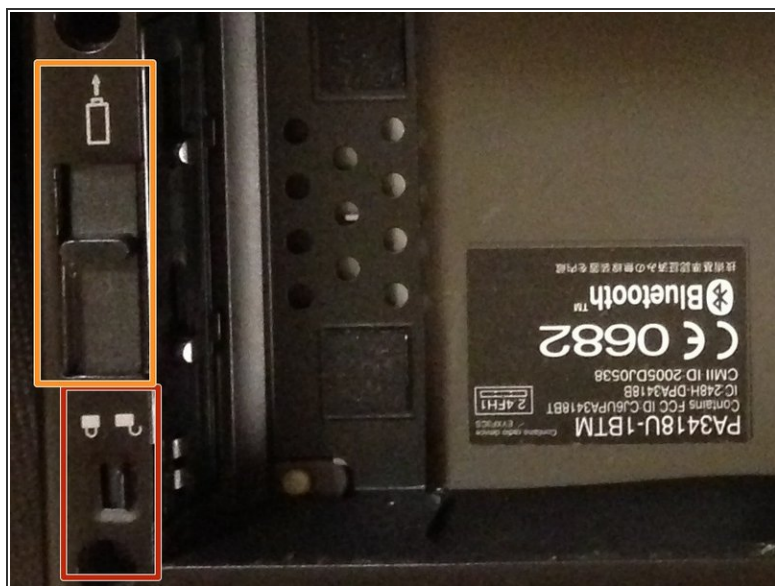
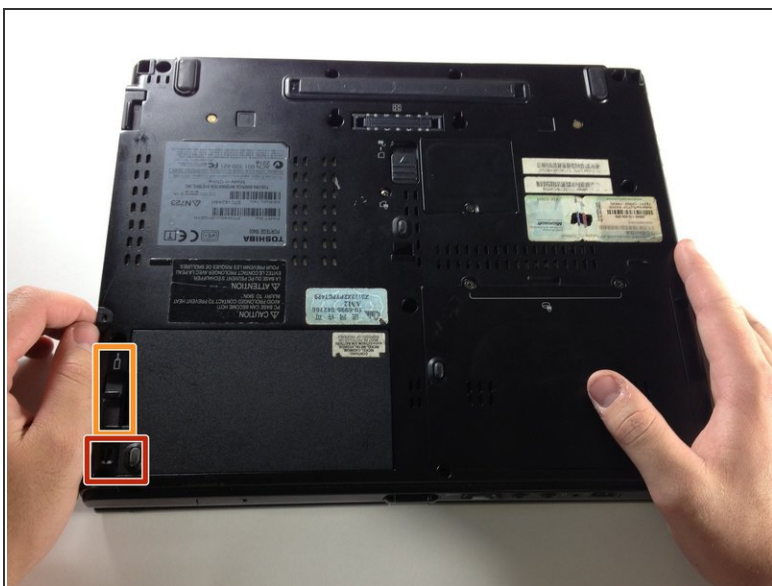
Written By: Varsha Roopreddy



INTRODUCTION

In this guide, you will learn how to replace a battery that doesn't charge properly or anymore. This guide will also teach you what the proper and necessary tools are for this repair.

Step 1 — Battery



- Make sure the battery lock switch is in the unlocked position.
- Slide the battery release towards the arrow to disengage the battery.

Step 2



- With one hand, hold the battery release switch.
- Remove the battery with the free hand.

To reassemble your device, follow these instructions in reverse order.