



Motorola Moto G7 Play Speaker Replacement

This guide will show each detailed step to...

Written By: curt caudle



INTRODUCTION

This guide will show each detailed step to removing and replacing the speaker inside Motorola G7 Play, model number XT1952-3 or XT1952-2. The speaker is used for phone calls and playing sound on the phone. If the phone no longer plays audio correctly or doesn't have any audio the speaker will need to be replace.

Before you begin, download the [Rescue and Smart Assistant](#) app to backup your device and diagnose whether your problem is software or hardware related.



TOOLS:

[iFixit Opening Picks \(Set of 6\)](#) (1)

[iFixit Opening Tool](#) (1)

[Phillips #00 Screwdriver](#) (1)

[SIM Card Eject Tool](#) (1)

[Tweezers](#) (1)

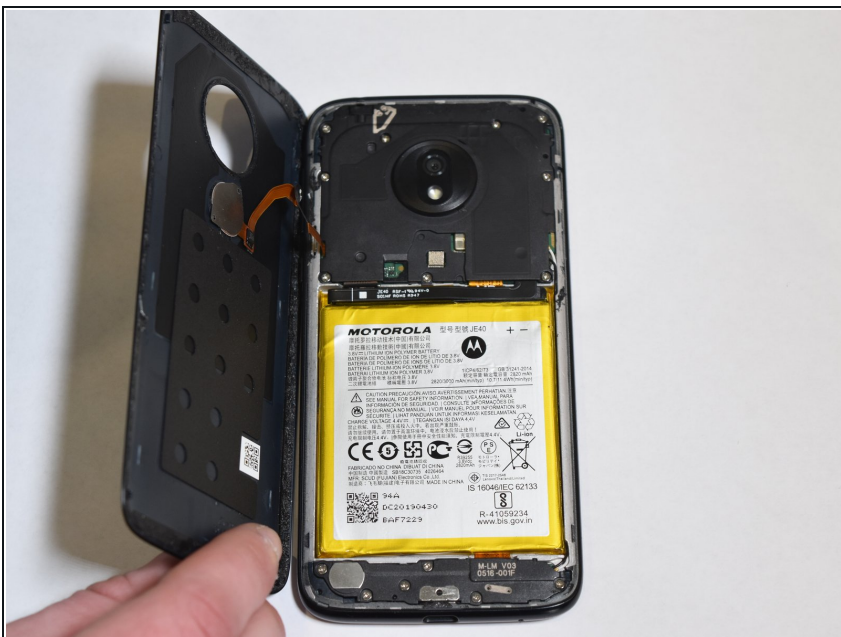
Step 1 — Back Cover



⚠ Turn off your device before you begin.

- Use the iFixit pick to break the adhesive around the back case.
- i** Use a heat gun, hairdryer, or iOpener to weaken the adhesive around the back case. If you're using the iOpener, please review the [instructions](#) for proper use.

Step 2



- Detach the back case from the phone.

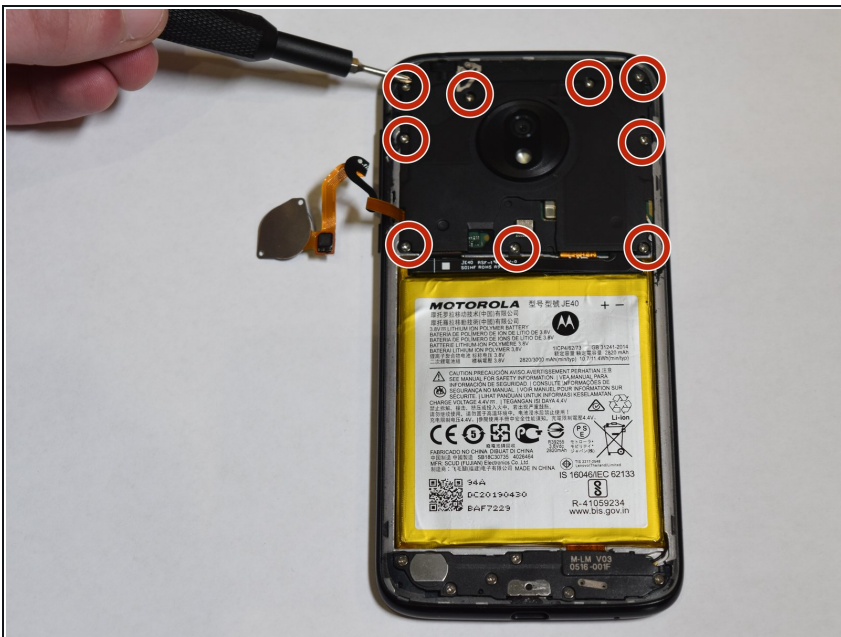
⚠ Make sure the back is opened right to left so the cable of the fingerprint scanner does not get damaged.

Step 3



- Use the iFixit pick and the iFixit opening tool to pull the fingerprint scanner off of the back case.

Step 4 — Motherboard



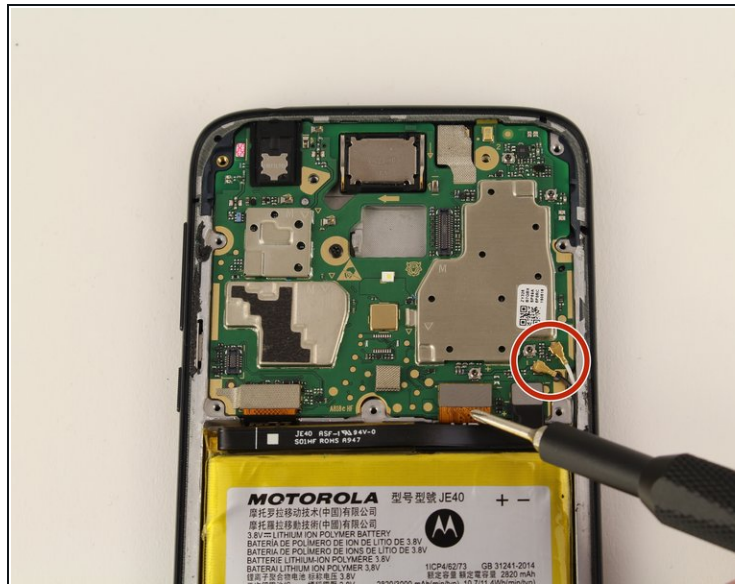
- Remove the nine 3.2mm screws from the motherboard cover with a Phillips #00 screwdriver.

Step 5



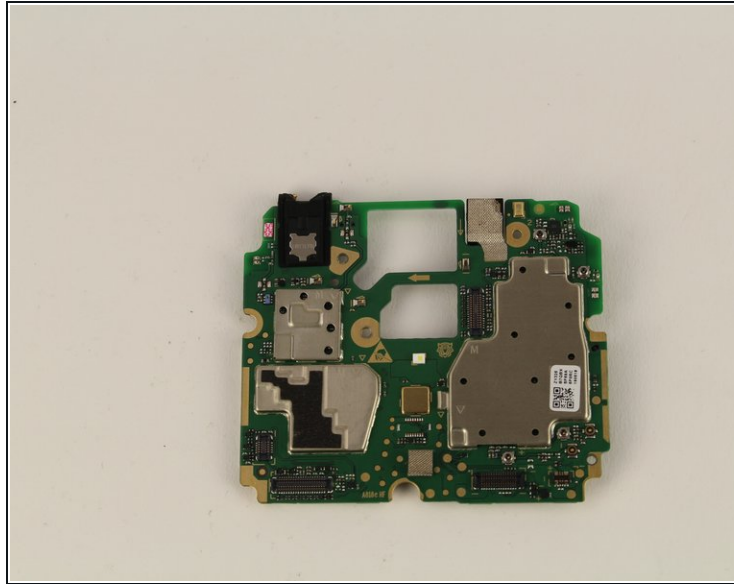
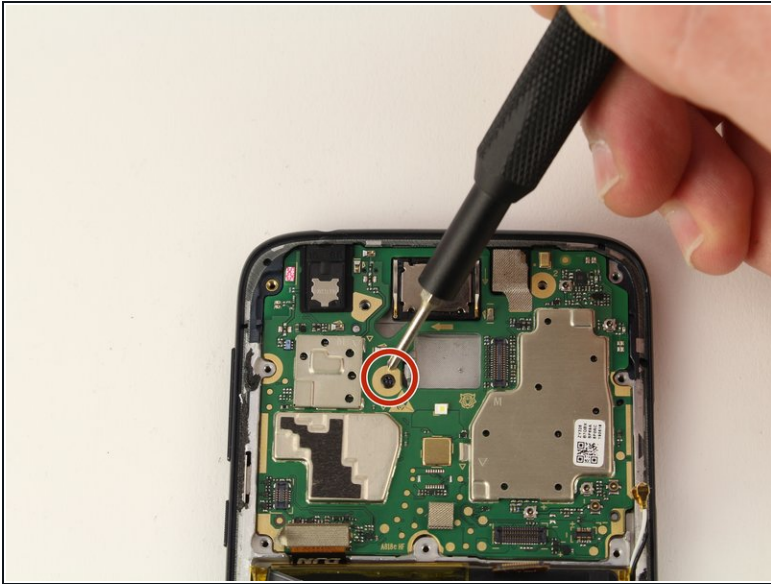
- Lift motherboard cover off by the bottom.
- ① Use reverse tweezers or a similar tool if needed.

Step 6



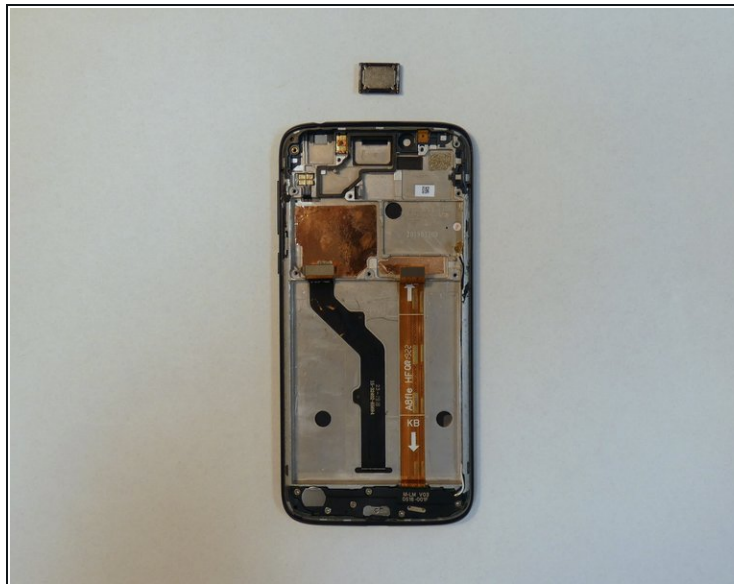
- Once the motherboard cover is removed, disconnect the four ribbon cables and the two wires attached to the motherboard.

Step 7



- Using the Phillips #00 screwdriver, remove the single 0.4 mm black screw in the center of the motherboard.
- Remove the motherboard from the device.

Step 8 — Speaker



- Use the spudger to remove the speaker from the top of the phone.

To reassemble your device, follow these instructions in reverse order.