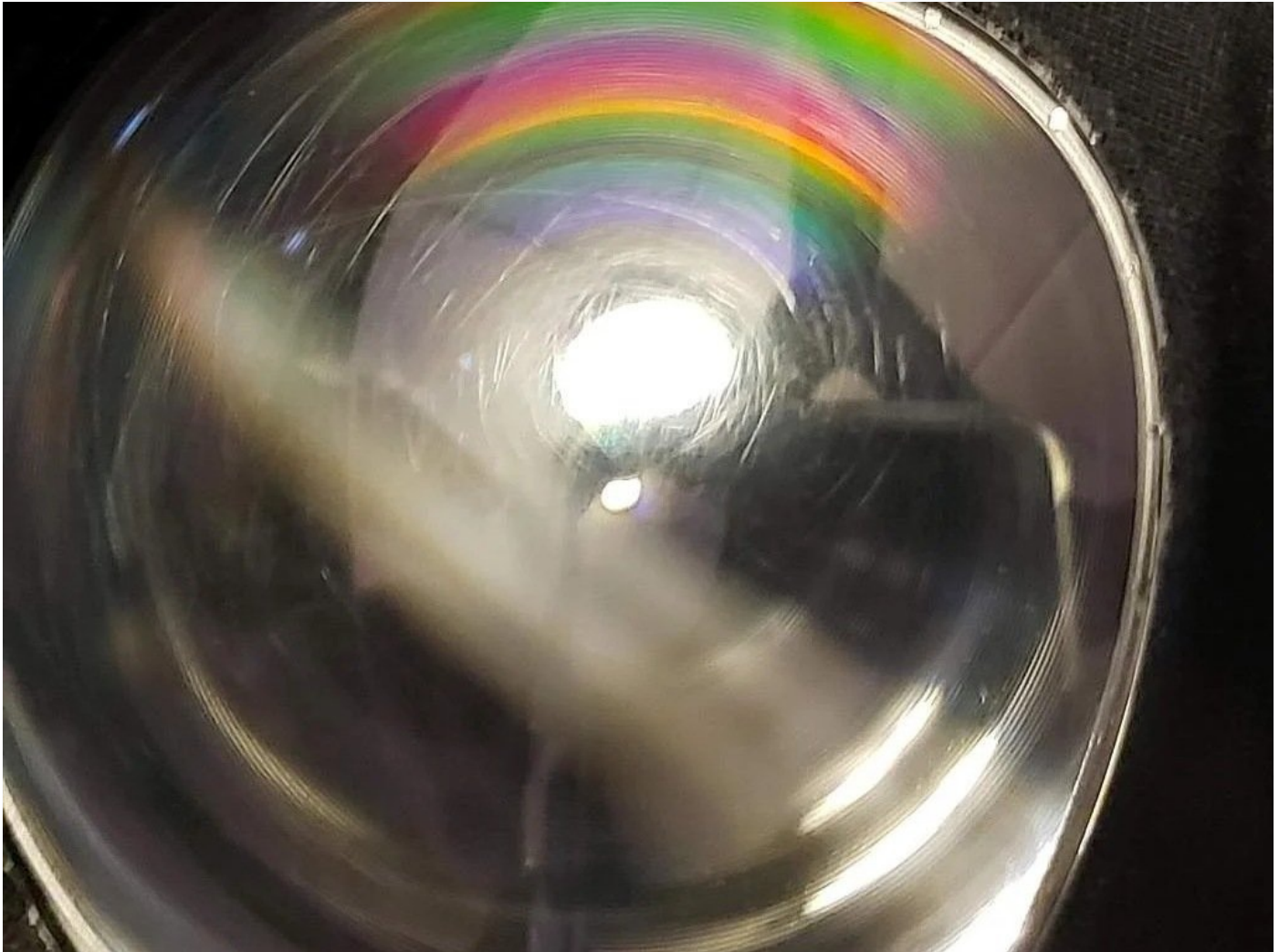




# Fix Oculus Quest 2 Scratched Lenses

This guide will tell you how to fix surface...

Written By: Legs66



# INTRODUCTION

This guide will tell you how to fix surface level scratched lenses with polyWatch Plastic or equivalent. This is an edited version of the guide found on [Forbes](#)

---

## TOOLS:

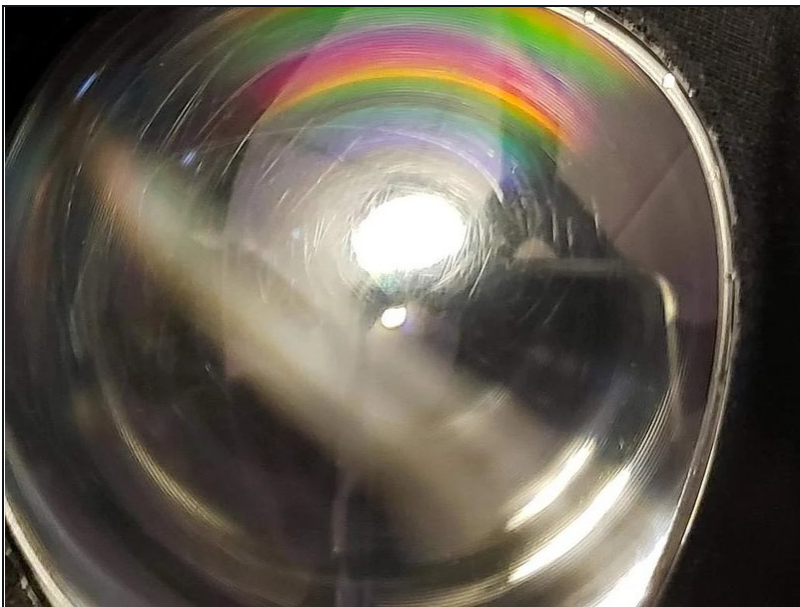
[Cotton Swabs](#) (1)

## PARTS:

[polyWatch](#) (1)

---

### Step 1 — Identify the Severity of the Scratch



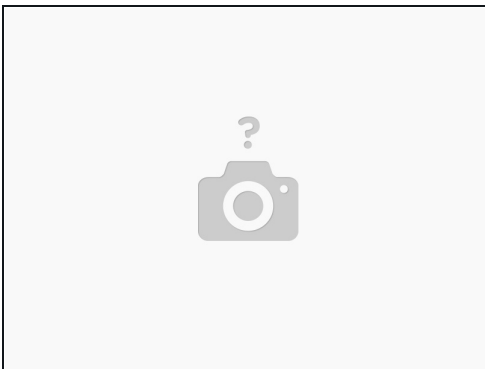
- First, identify how severe the scratch is. Take a look at the lens when it's turned off, when the screen is on but displaying a black screen, and when it's in-game. Put your finger on the small rectangular sensor between the lenses to turn the screen on without having to put it on completely.
- If you see equally-spaced circular ridges, don't worry, that's part of the design. The Quest's lenses have multiple layers, with a clear top layer and then the Fresnel (circular ridged) layer underneath.
- Any damage to the Fresnel layer will require the top layer to be cracked, not scratched. This fix won't help your problem, and you'll likely have to either send it off to the manufacturer under your warranty and hope for the best or buy a replacement headset.

## Step 2 — Choosing your repair fluid



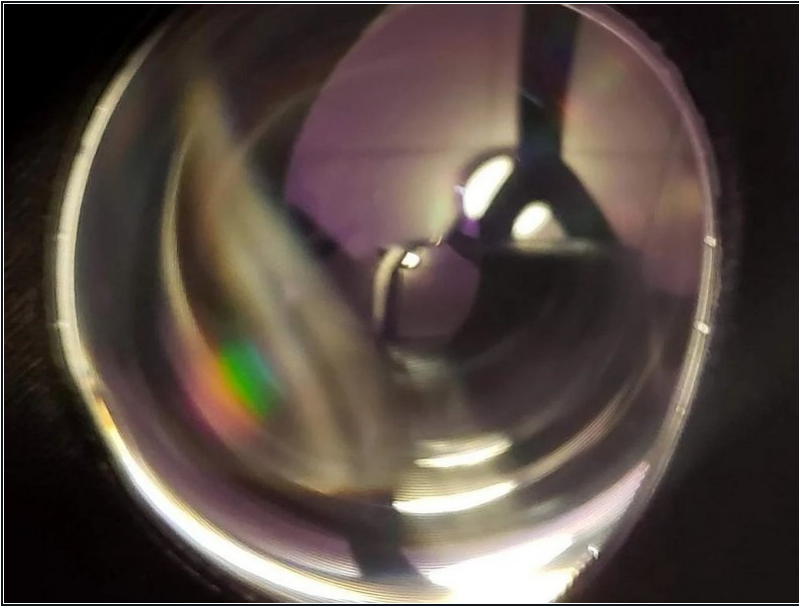
- If it's a surface-level scratch, or scratches, then what you need is plastic watch face repairing fluid.
- While any brand is fine, this guide uses polyWatch Plastic, which cost £3.88 on Amazon UK. There are varying opinions as to which is the best sort to buy, although for the best repair we'd recommend ones that say they're either for "polish" or "plastic", rather than "glass".

## Step 3 — Clean Your Lenses



- Next, get a microfiber cloth and carefully, but thoroughly clean the lens. The cleaner and more dust-free the surface, the better a repair you'll get.

## Step 4 — Applying polyWatch



- Once this has done, put a small blob (think half of a pea-sized) of the watch face polish onto the lens, and with either a cotton bud or cotton pad, carefully wipe the goop around in circles. Don't just focus on the area with the scratch, make sure you coat the entire lens to ensure an even application.
- Once you've fully coated it, with another cotton bud or pad, very gently pat down the lens to remove any excess and leave it to sit for a few minutes. If the scratching is deeper, you may want to wait and then repeat the process a couple more times once it dried, but for minor scratches one coating is enough.

---

This may leave a small blurry after affect, but nothing drastic