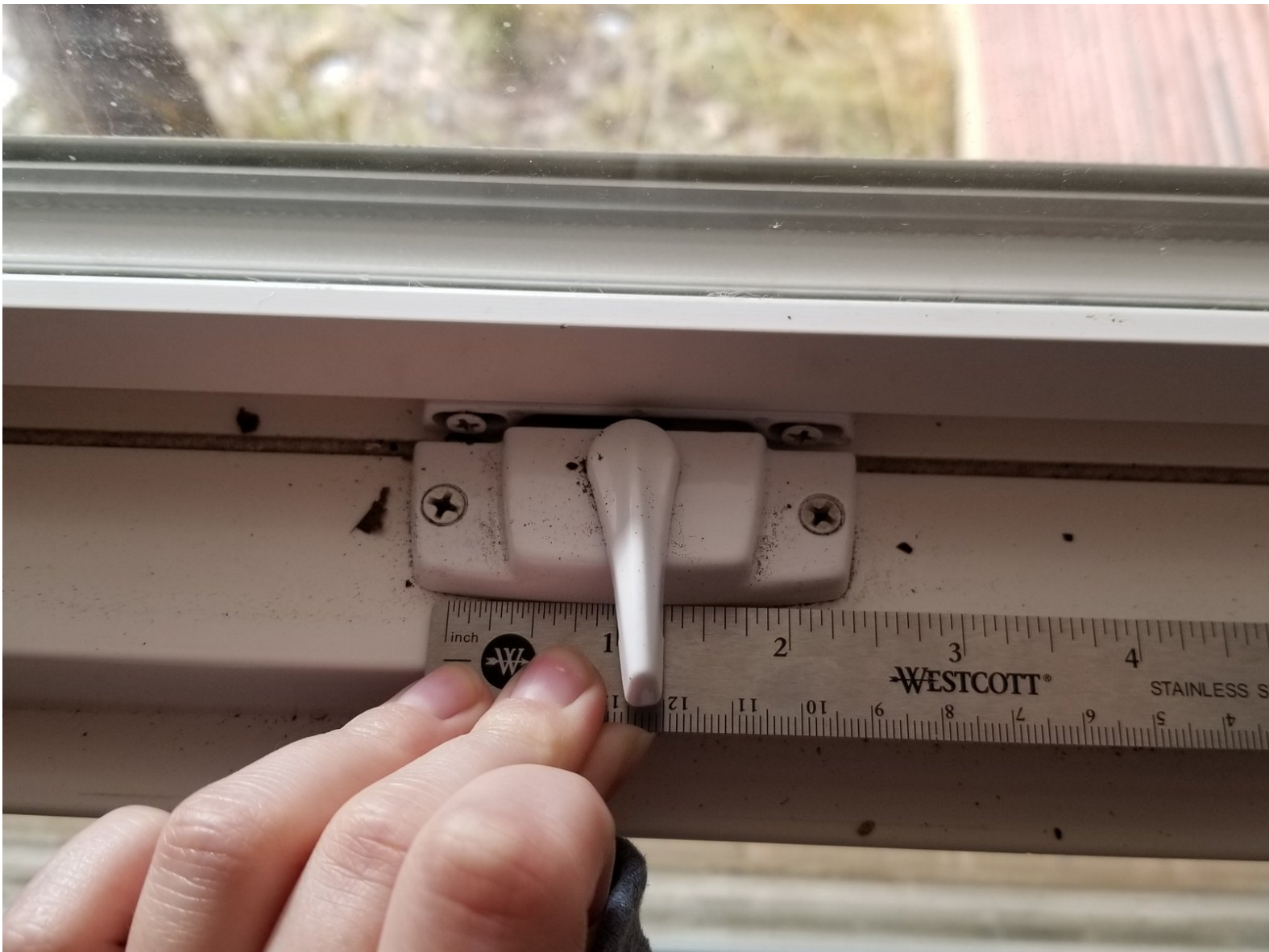




How to Replace a Sash Window Lock

Quickly replace a broken or old window lock with a new window lock.

Written By: Seb S



INTRODUCTION

If your window lock is broken or getting stuck when you try to lock or unlock your window, then it may be time to replace your lock, for both convenience and safety reasons.

This guide helps users successfully remove and replace a window sash lock with minimal effort. Some tips to follow for this guides are:

When removing the lock, keep the lock in a half-locked neutral position if possible. This position allows the user to easily access both screws that need to be removed.

When removing the lock keeper, keep pressure on the keeper when removing the last screw as the keeper will fall off the window when the screws are removed. This tip is mainly for those concerned with loosing old pieces, or for those with small children/pets that may get a hold of fallen pieces.

TOOLS:

- [Phillips #2 Screwdriver](#) (1)
 - [Ruler](#) (1)
-

Step 1 — Window Lock



- Measure the length between the two screws on the lock.
 - Measure the width of the lock from the screw to the keeper.
- i** These measurements help determine the size of lock you will need.

Step 2



- Move the lock into a neutral position.
- Remove the 12.7 mm screw on the left side of the lock with a Phillips #2 screwdriver.

Step 3



- Remove the 12.7 mm Phillips #2 screw on the right side of the lock.
- Remove the lock.

Step 4



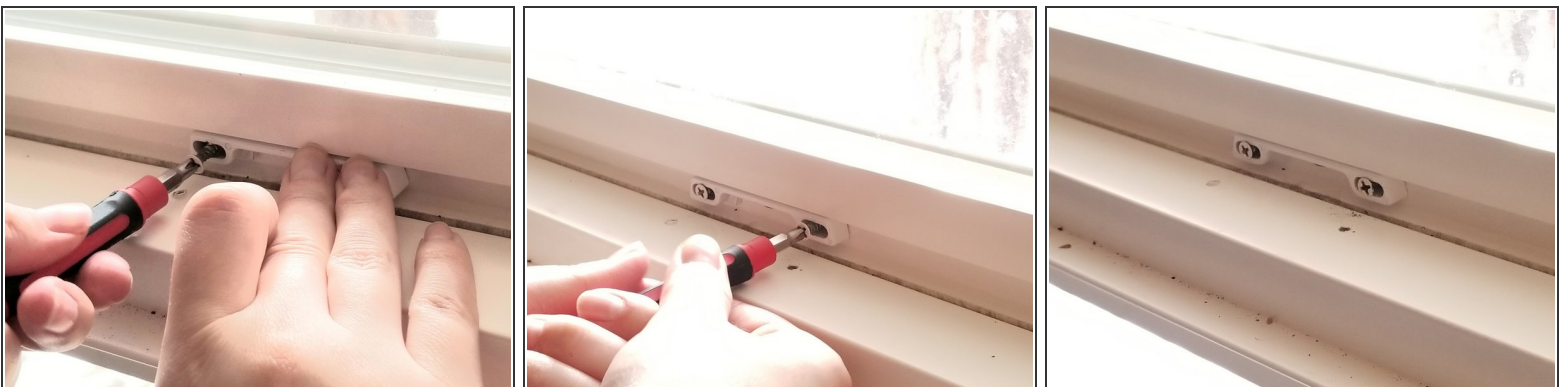
- Remove the left 12.7 mm screw on the lock keeper with a Phillips #2 screwdriver.

Step 5



- Remove the right 12.7 mm Phillips #2 screw on the lock keeper.
- ⓘ The lock keeper will fall off of the window once the last screw is removed. Be ready to catch it!

Step 6



- Line up the new lock keeper with the existing holes in the window.
- Hold the keeper in place while inserting and tightening both the left and right 12.7 mm Phillips screws with a Phillips #2 screwdriver.


Step 7



- Line up the new lock with the existing holes.
- Hold the new lock in place while inserting and tightening the right 12.7 mm screw with a Phillips #2 screwdriver.

Step 8



- Put the lock into a locked position.
 - Hold the new lock in place while inserting and tightening the left 12.7 mm Phillips #2 screw.
-  The new lock is now ready to be used!

To reassemble your device, follow these instructions in reverse order.