



Screwless Light Switch Wall Plate Replacement

This guide will show you how to replace an old ...

Written By: Davood Dehghani Firoozabadi



INTRODUCTION

This guide will show you how to replace an old light switch wall plate (also called a faceplate) with a screwless one. Reasons to replace faceplates include but are not limited to:

- Switching from a regular wall plate to a more modern-looking screwless wall plate.
- Change of color of older wall plates that happens with the passage of time.
- Damage to the wall plate due to an accident or incorrect use.

Caution: Before beginning this guide, turn the light switch off and turn off power to the switch at the circuit breaker.



TOOLS:

- [6-in-1 Screwdriver](#) (1)



PARTS:

- [Screwless Faceplate](#) (1)

Step 1 — Light Switch Wall Plate



⚠ Caution: Before beginning this guide, turn the light switch off and turn off power to the switch at the circuit breaker.

i They are usually labeled by the area of the house to which they belong.

Step 2



- Insert a prying tool into the two catches on the top of the light switch.
- Slowly turn the prying tool or use it as a lever to push the outer plate away from the wall.

Step 3



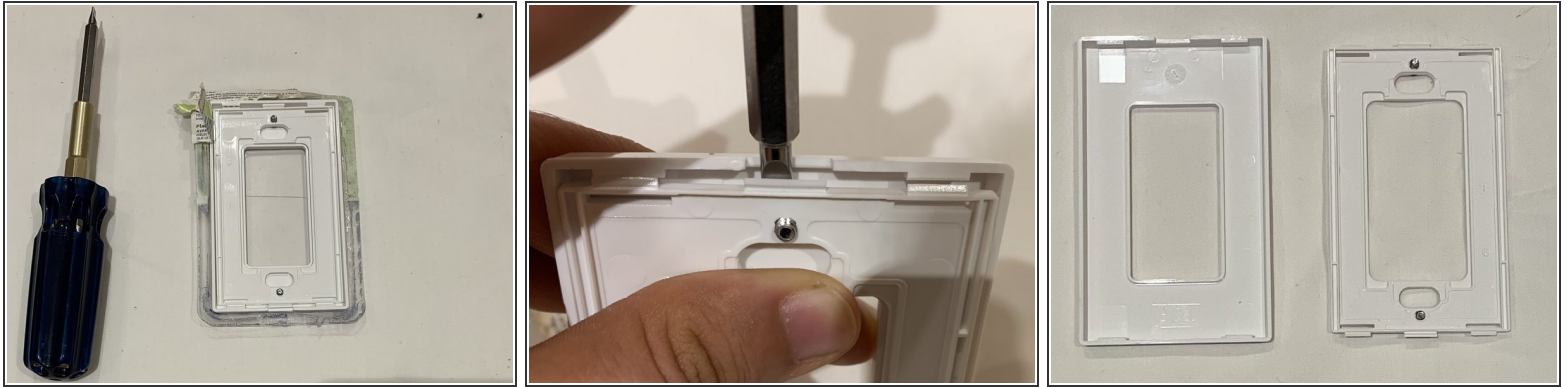
- Remove the outer layer of the faceplate.

Step 4



- Remove the inner part of the faceplate by unscrewing the two screws on the top and the bottom.
- ⓘ Different faceplates use different screws. Use the screwdriver that works with your screws.

Step 5



- Unbox the new faceplate.
- Just like Step 2, remove the outer layer of the new faceplate by inserting a prying tool in the catches on its top and bottom, pushing the two layers away from each other.

Step 6



- Hold the inner layer of the faceplate against the wall.
- Align the holes in the plate with the existing holes on the light switch or power outlet.
- Tighten the two screws on the top and bottom.

Step 7



- Attach the outer layer of the faceplate by putting it on top of the inner layer and slightly pushing it until you hear a click sound.

You can follow this guide to replace a power outlet faceplate as the procedure is essentially the same.