



# AVerMedia GL310 Teardown

A complete teardown of the AVerMedia GL310, known as the LGP Lite or the AVerCapture HD.

Written By: Marcus Jones





## TOOLS:

- [Spudger](#) (1)
  - [Phillips PH000 Screwdriver](#) (1)
-

## Step 1 — Unscrewing Screws



- Use a spudger to lift the corners of the silicone membrane under the device.
- Unscrew the Phillips head screws using a PH000 screw bit.

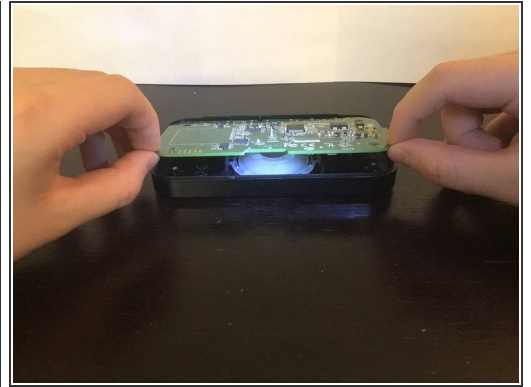
## Step 2 — Removing The Backplate



- Lift up the backplate.



## Step 3 — Removing The Motherboard

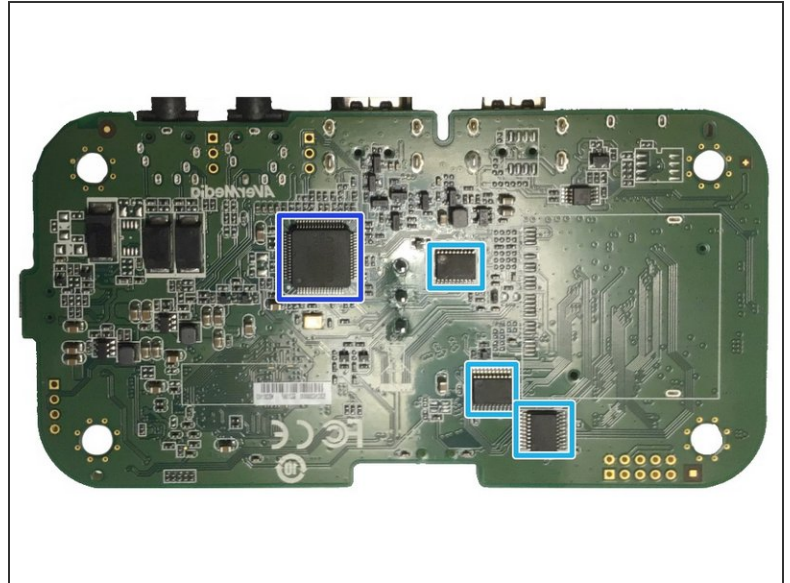
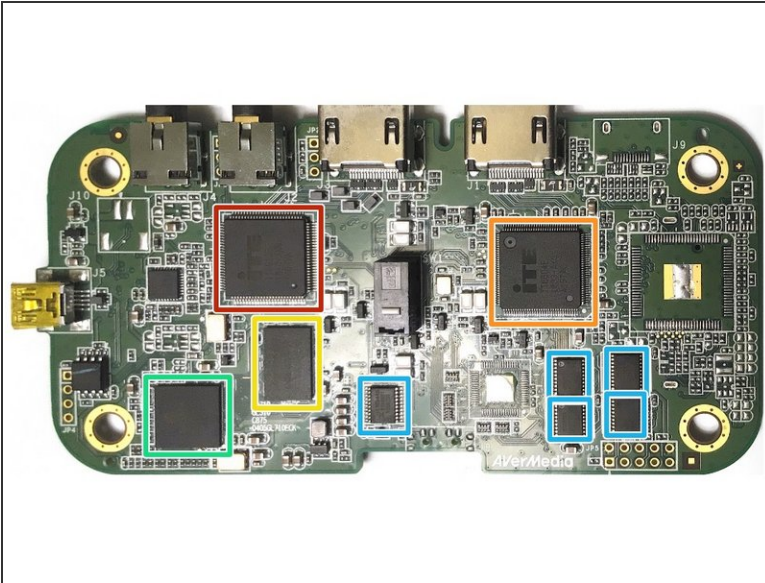


- Insert a plastic spudger into the highlighted notch in the motherboard.

**⚠ Remember to use a plastic spudger or else you may short the solder joints near the notch.**

- Pull the motherboard up using the spudger.
- Remove the motherboard, holding the corners.

## Step 4 — Inspecting The Motherboard



- Here's a list of chips present on the motherboard:
  - ITE IT6613 HDMI transmitter
  - ITE IT6604 single-link HDMI 1.4 receiver
  - Nanya NT6DM16M32BC-T1 mobile 512mb DDR RAM chip clocked at 200MHz
  - Sigma Designs PL330B-CPE3 H.264 Encoder
    - ⓘ This seems to be the same chip found on the [C875](#) model of the device
  - Texas Instruments LVC244A octal buffer/ driver
  - Nuvoton NUC100RD2BN RISC ARM microcontroller clocked at 50MHz