



Google Pixel 5 Screen Replacement

This repair guide was authored by the iFixit...

Written By: Robert Boyd



INTRODUCTION

This repair guide was authored by the iFixit staff and hasn't been endorsed by Google. Learn more about our repair guides [here](#).

Follow this guide to replace a broken or cracked screen on a Google Pixel 5.

Unlike previous Google Pixels models, the Pixel 5's screen is reinforced with a metal frame. The earpiece speaker is also glued onto the back side of the screen.



TOOLS:

[iOpener](#) (1)
[Suction Handle](#) (1)
[iFixit Opening Picks \(Set of 6\)](#) (1)
[Tweezers](#) (1)
[Spudger](#) (1)



PARTS:

[Google Pixel 5 Screen - Genuine](#) (1)
[Google Pixel 5 Display Adhesive - Genuine](#) (1)
[Tesa 61395 Tape](#) (1)

Step 1 — Heat the bottom edge of the screen



- [Heat an iOpener](#) and apply it to the bottom edge of the screen for one minute.
- ⓘ A hair dryer, heat gun, or hot plate may also be used, but be careful not to overheat the phone—the display and internal battery are both susceptible to heat damage.

Step 2 — Screen removal information



- ① While you're waiting for the adhesive to loosen, take note of the following:
- *Screen seam*: This seam separates the screen from the rest of the phone. **Do not pry at this seam.**
 - *Bezel seam*: This is where the plastic bezel designed to protect the screen meets the frame. It's held in place by [plastic clips](#). **This is where you should pry.**

Step 3 — Anti-Clamp instructions



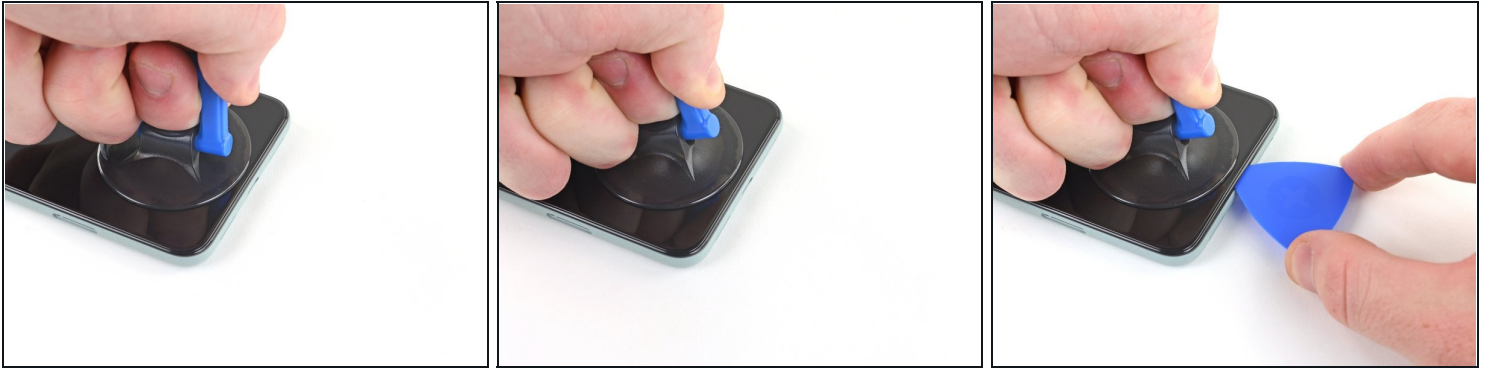
- ① The next two steps demonstrate the [Anti-Clamp](#), a tool we designed to make the opening procedure easier. **If you aren't using the Anti-Clamp, skip down two steps for an alternate method.**
- ① For complete instructions on how to use the Anti-Clamp, [check out this guide](#).
- Pull the blue handle towards the hinge to disengage opening mode.
- Position the suction cups near the bottom edge of the screen—one on the front, and one on the back.
- Push down on the cups to apply suction to the desired area.
- ① If you find that the surface of your device is too slippery for the Anti-Clamp to hold onto, you can use packing tape to create a grippier surface.

Step 4



- Push the blue handle away from the hinge to engage opening mode.
 - Turn the handle clockwise until you see the cups start to stretch.
 - ⓘ Make sure the suction cups remain aligned to each other. If they begin to slip out of alignment, loosen the suction cups slightly and realign the arms.
 - Wait one minute to give the adhesive a chance to release and present an opening gap.
 - Insert an opening pick under the screen and its bezel frame when the Anti-Clamp creates a large enough gap.
 - ⓘ If the Anti-Clamp doesn't create a sufficient gap, apply more heat to the area and rotate the handle clockwise half a turn.
- ⚠ Don't crank more than a half a turn at a time, and wait one minute between turns. Let the Anti-Clamp and time do the work for you.**
- **Skip the next step.**

Step 5 — Insert an opening pick



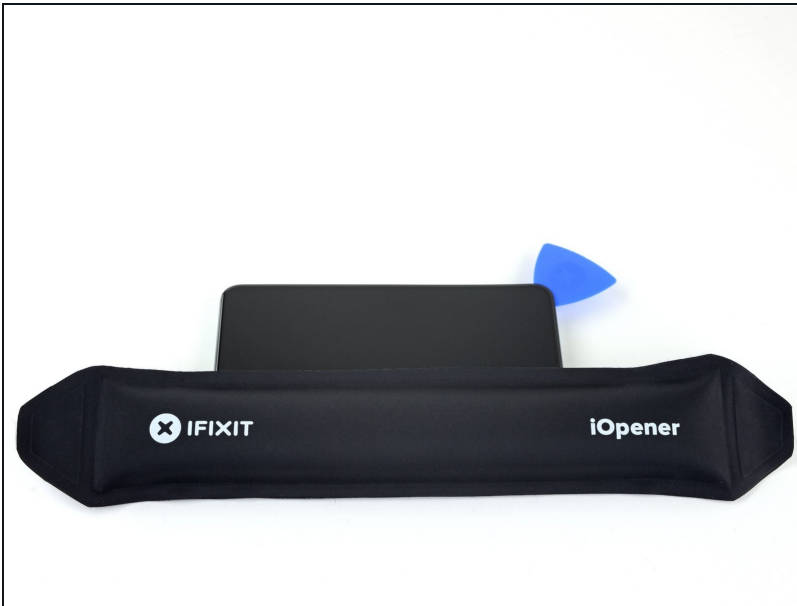
- Apply a suction cup to the screen, as close to the heated edge as possible.
 - ① If your screen is badly cracked, follow [this guide](#) to tape over the cracked screen. If all else fails, you can superglue the suction cup to the broken screen.
- Pull up on the suction cup with strong, steady force to create a gap.
 - ① Depending on the age of your device, this may be difficult. If you have trouble, apply more heat and try again.
- Insert the opening pick into the gap.

Step 6 — Slice the bottom adhesive



- Slide the opening pick back and forth along the bottom of the screen to slice the adhesive.
- Leave the pick inserted in the bottom right corner to prevent the adhesive from re-sealing.

Step 7 — Heat the left edge of the screen



- Apply a heated iOpener to the left edge of the screen for one minute.

Step 8



- Insert another opening pick into the bottom left corner of the screen.
- Slide the opening pick around the left corner.
⚠ Do not insert the pick more than 1/4 inch (6 mm) or you may damage the screen's flex cable located in the middle of the left edge.
- Continue to slide the pick up towards the front camera to slice the adhesive on the left edge of the screen.
- Leave the pick inserted to prevent the adhesive from re-sealing.

Step 9



- Insert another opening pick into the top left corner of the screen.
- Slide the pick around the front camera and across the top edge of the phone.
 - ❗ If the adhesive is difficult to slice, apply heat to the area for one minute and try again.
- Slide the pick to the top right corner of the phone and leave the pick inserted.

Step 10



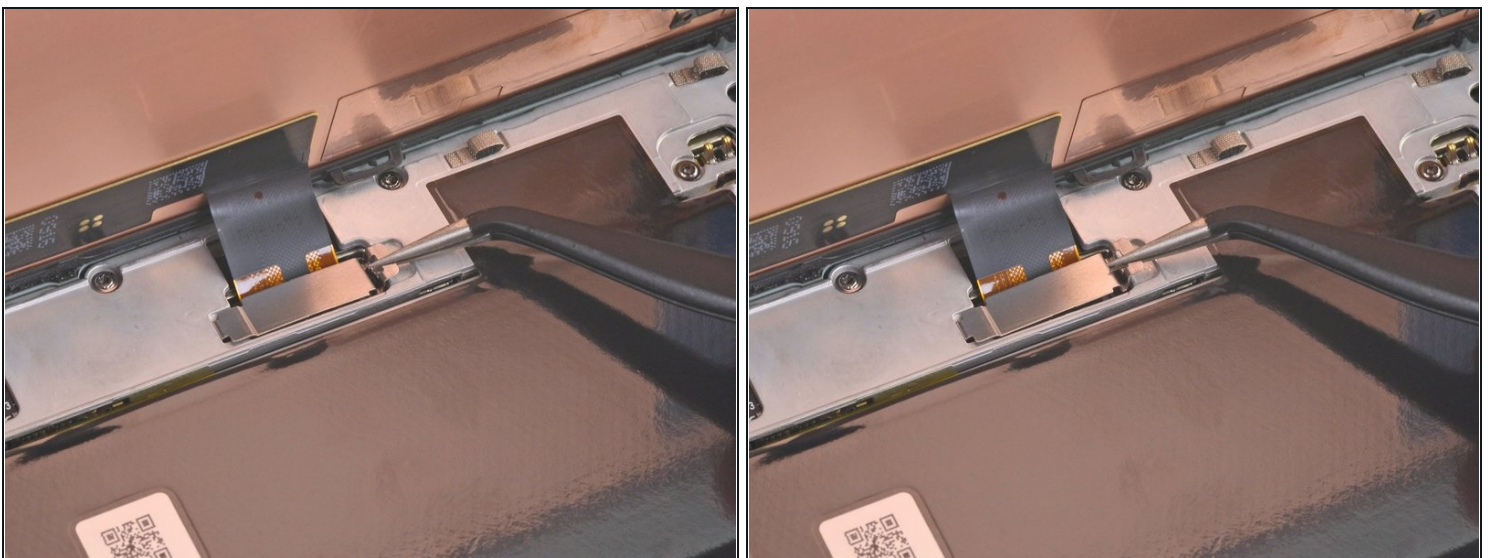
- Insert an opening pick into the bottom right corner of the screen.
- Slide the pick up to the top right corner to slice the last edge of adhesive.
 - ❗ You may need to run an opening pick around the edges again to ensure all the adhesive is cut. It is applied the thickest on the four corners.

Step 11 — Open up the screen



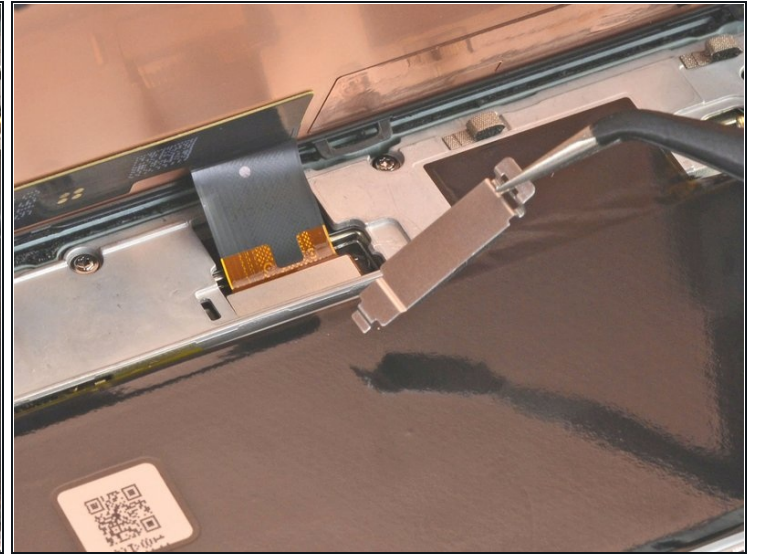
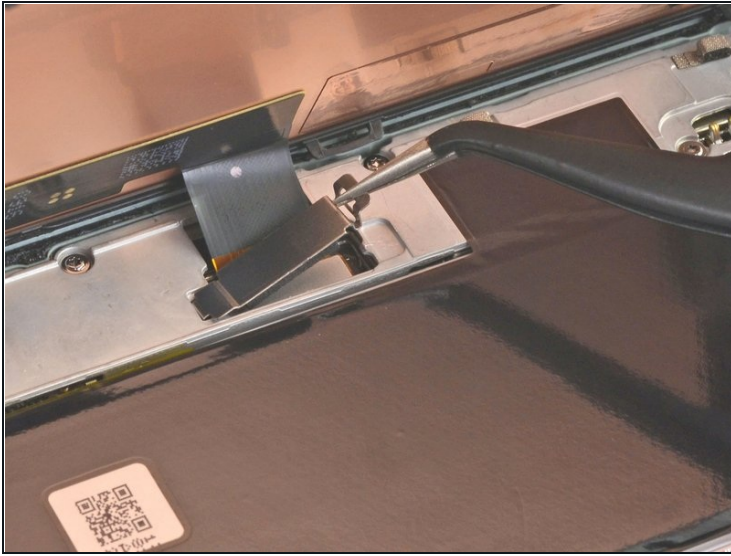
- Use the opening pick from the top left corner to lift up the left edge of the screen a few millimeters. This will keep the clips from snapping back down into the case.
- Lift up on the right side of the screen and open up the phone like a book.
⚠ Do not open the screen more than 90 degrees to prevent damaging the screen flex cable.

Step 12 — Disconnect the screen



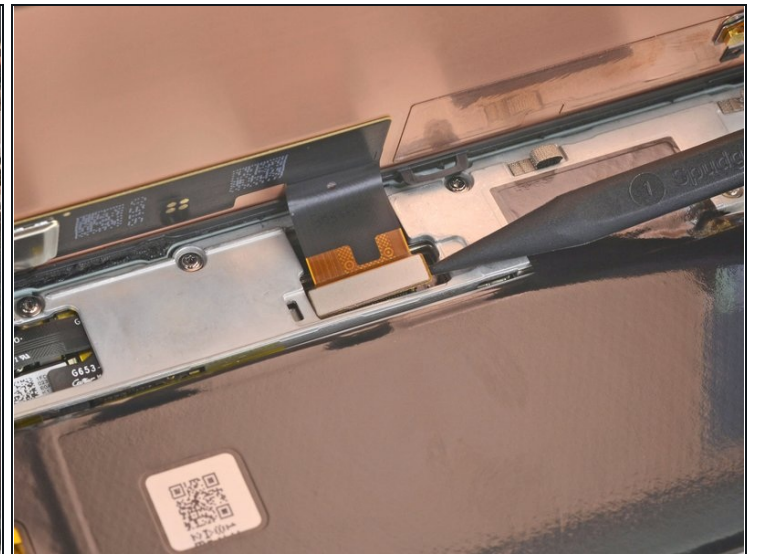
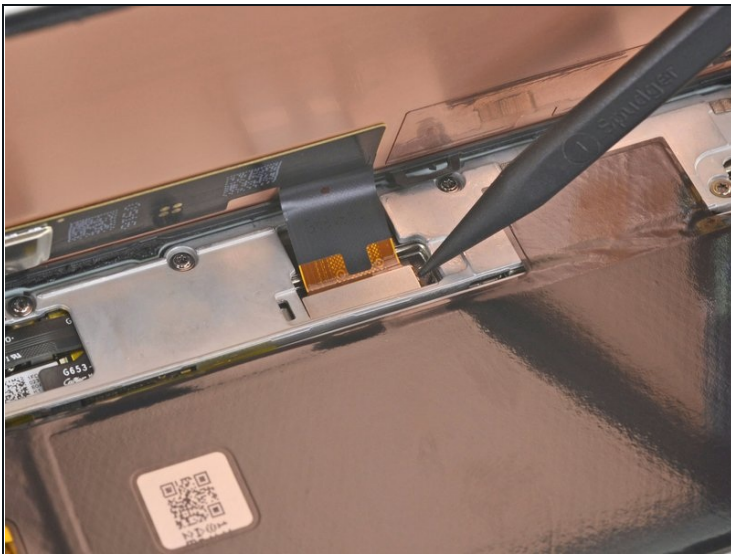
- Use tweezers to grip the screen connector cover securing the screen flex cable.
- Push the clip in towards the connector to unlatch it.

Step 13



- Remove the screen connector cover.
- ⓘ Make sure to keep this component to reinstall it during reassembly.

Step 14



- Use the tip of the spudger to pry up and disconnect the screen flex cable.
 - ✦ To re-attach [press connectors](#) like this one, carefully align and press down on one side until it clicks into place, then repeat on the other side. Do not press down on the middle. If the connector is misaligned, the pins can bend, causing permanent damage

Step 15 — Remove the screen



- Remove the screen.

① Use tweezers to pick off the [remaining adhesive](#) on the case.

⚠ If you use isopropyl alcohol to clean the adhesive off the display, be sure to not let it splash onto any unintended components, as this can weaken their adhesive bond.

- ☑ If you replaced the screen, check the screen's front-facing camera hole and remove any protective liners covering it.
- ☑ If your replacement screen's display cable is held down by tape, remove the tape before installation.
- ☑ If you are using a custom-cut adhesive, follow [this guide](#) to correctly apply new screen adhesive.
- ☑ If you are using Tesa tape to reattach the screen, [follow this guide](#).
- ☑ During the boot-up process after reassembly, the screen will go through a calibration sequence. Do not touch the screen during this process, as it could result in improper touch calibration and create touch issues.

Compare your new replacement part to the original part—you may need to transfer remaining components or remove adhesive backings from the new part before installing.

To reassemble your device, follow the above steps in reverse order.

Take your e-waste to an [R2 or e-Stewards certified recycler](#).

Repair didn't go as planned? Try some [basic troubleshooting](#), or ask our [Answers community](#) for help.