



# Zotac GTX 1080 Ti Mini Fans Replacement

How to replace a broken graphics card fan for the Zotac GTX 1080 Ti Mini.

Written By: Victor Pan



---

## INTRODUCTION

In this guide, we will take you through a step-by-step approach on how to replace a broken graphics card fan specifically the Zotac GTX 1080 Ti Mini. A couple of reasons why you might need to do the replacement is the graphics card fans can stop functioning efficiently, become noisy, or completely stop working. In order to fix these problems, you can use the guide to help.



### TOOLS:

- [Phillips #0 Screwdriver](#) (1)
  - [6-in-1 Screwdriver](#) (1)
  - [small container](#) (1)
-

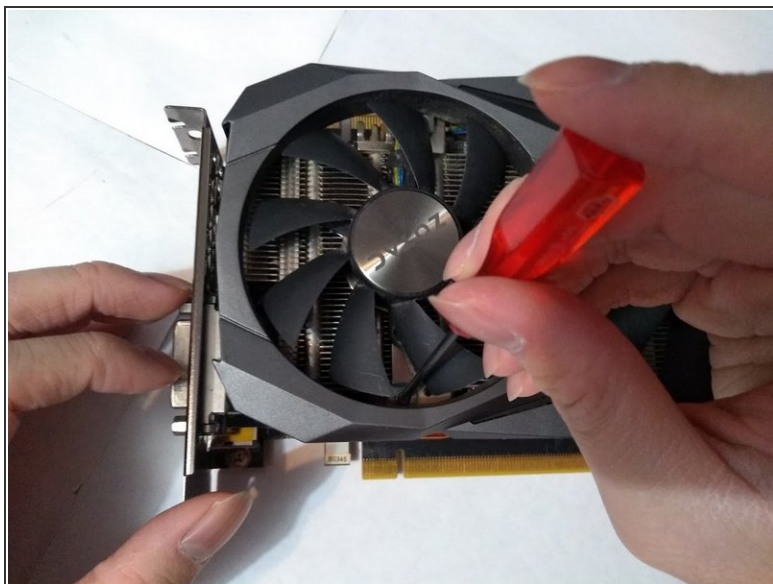
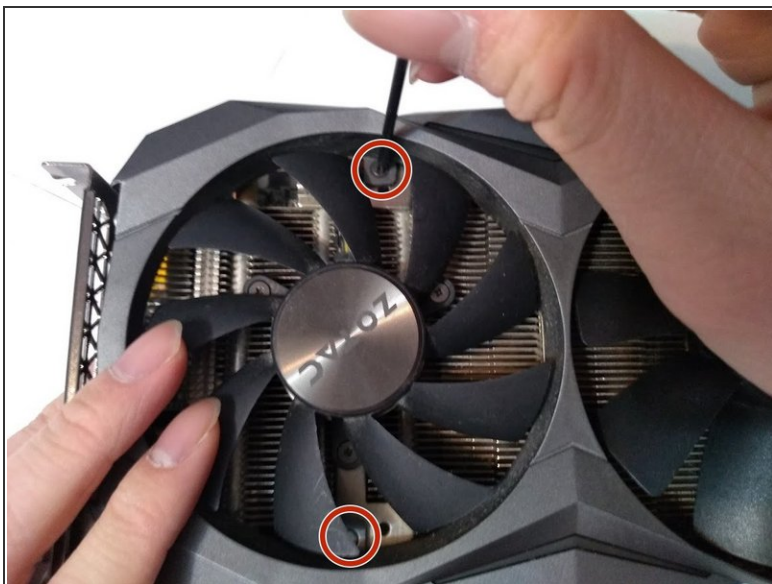
## Step 1 — Zotac GTX 1080 Ti Mini Fans



**⚠** Be sure to properly ground yourself with an anti-static wristband before working on the graphics card.

- Use a Phillips #0 screwdriver to remove the two 4mm screws from the right side of the shroud.

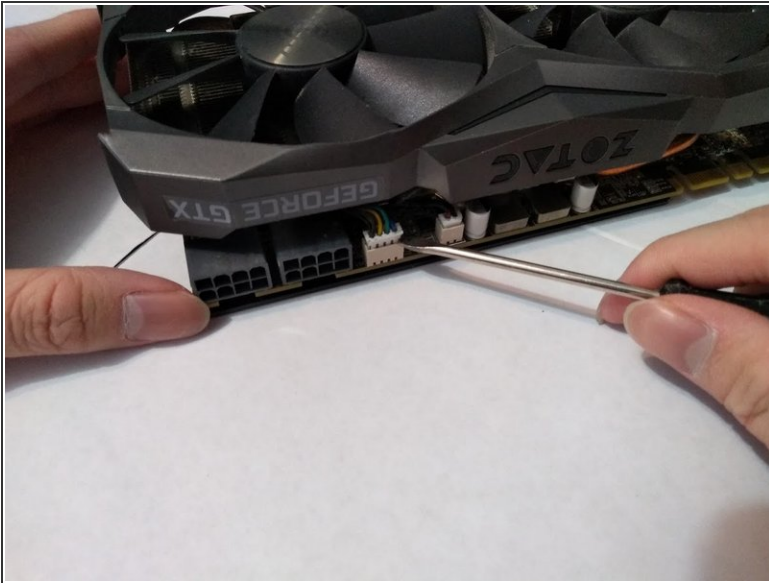
## Step 2



- Use a Phillips #0 screwdriver to remove the two 4mm screws from the left side of the shroud.



### Step 3



- ① Look for the fan header located beside the 16-pin power connector.
- Gently pry the fan connector apart from the header with a flathead screwdriver.

## Step 4

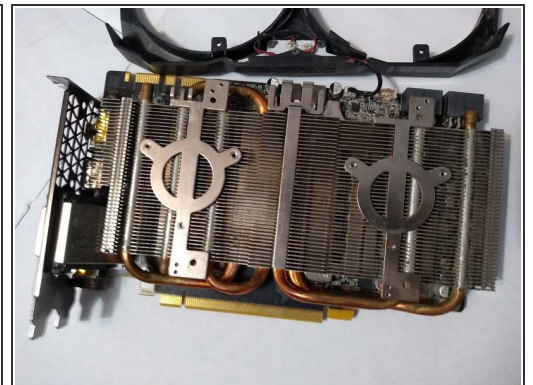
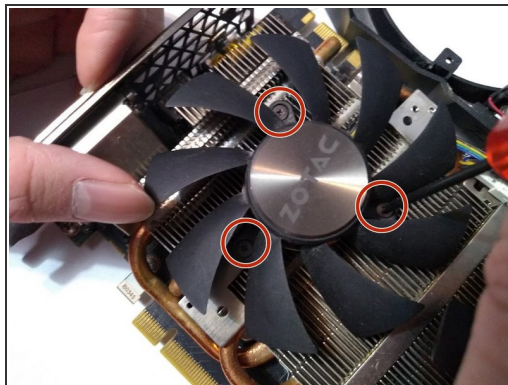
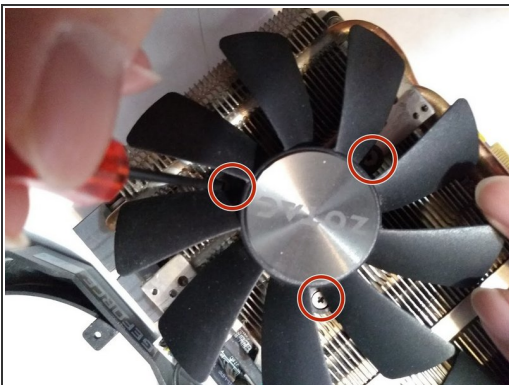


- Slowly and carefully lift the shroud off the heatsink.

**⚠** During this step, make sure not to damage the LED connector that is still connecting the shroud to the PCB.

- Flip the shroud along the top of the graphics card.

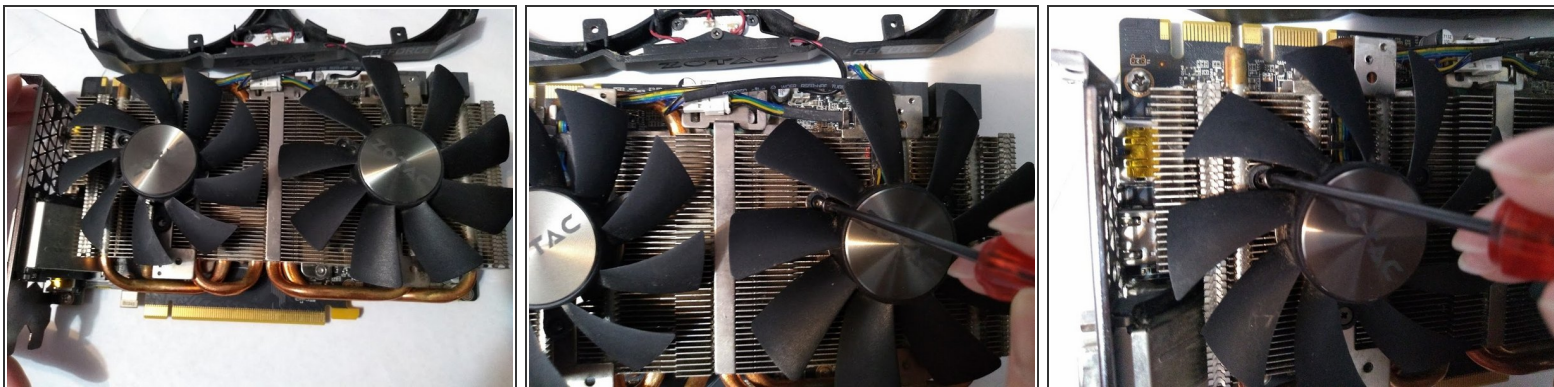
## Step 5



- Remove the three 3 mm Phillips screws holding the fans to the heatsink with a Phillips #0 screwdriver.
- Remove the broken fans.



## Step 6



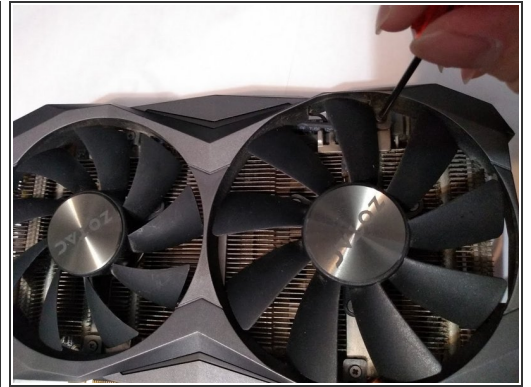
- Place the replacement fan on top of the heatsink with the screw holes aligned.
- Screw the fans into place using a Phillips #0 screwdriver.

## Step 7



- Reconnect the fan connector to its header.

## Step 8



- Place the shroud back over the heatsink and screw it back into place using a Phillips #0 screwdriver.

Hopefully, your graphics card is fully replaced and completely working now.