



Door Hinge Replacement

How to replace an old hinge on a door.

Written By: Zeniff Aviles



INTRODUCTION

Doors are a major part of our lives, and we use them on a day-to-day basis. Some problems may occur with constant use and age, which can be solved with an extremely quick fix by replacing the door's old hinge with a new one.

If your door is having problems opening and closing, it may be because of your old door hinge being damaged due to age and general wear-and-tear.

Before proceeding with this guide, you must know how to use a screwdriver and tape measure.

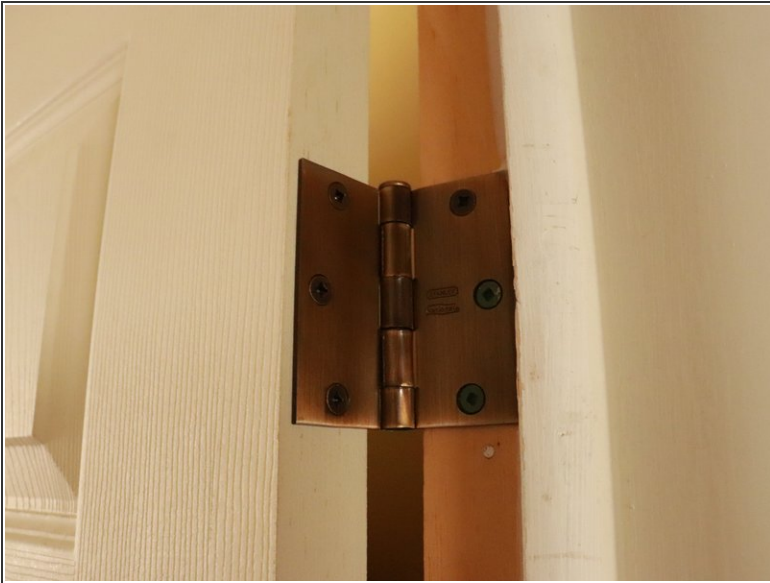
Step 2 requires you to secure the door to prevent it from falling over while you're replacing the old hinge. Take extra precaution to prevent the door from falling over



TOOLS:

- [Measuring Tape](#) (1)
 - [WD-40](#) (1)
 - [80 Grit Sandpaper](#) (1)
 - [Phillips #1 Screwdriver](#) (1)
-

Step 1 — Hinge



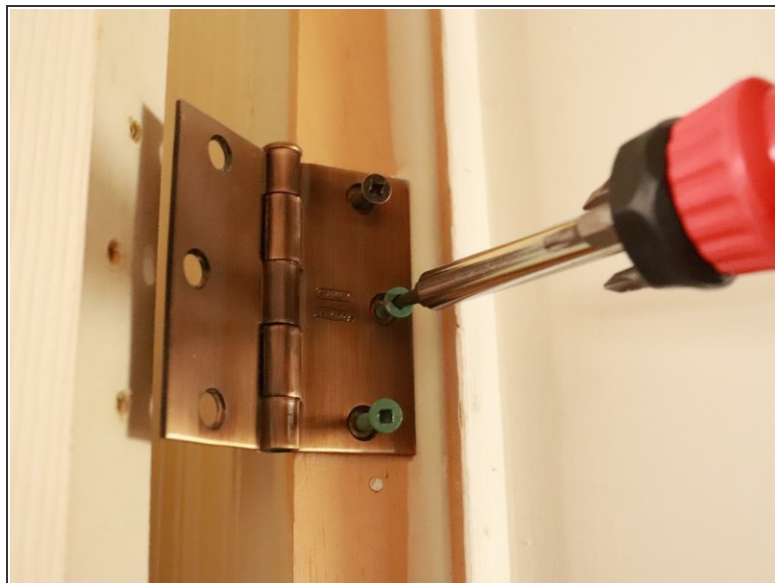
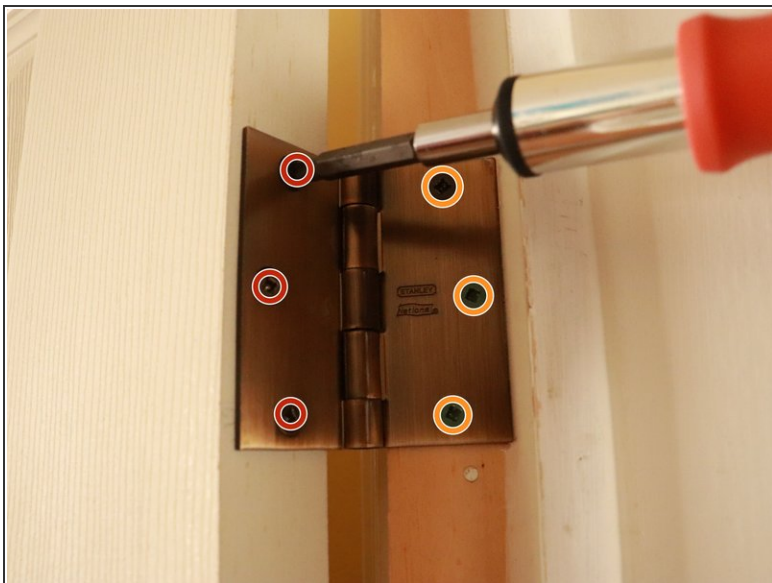
- Take measurements of the door hinge using a tape measure and use the measurements to find a replacement door hinge.

Step 2



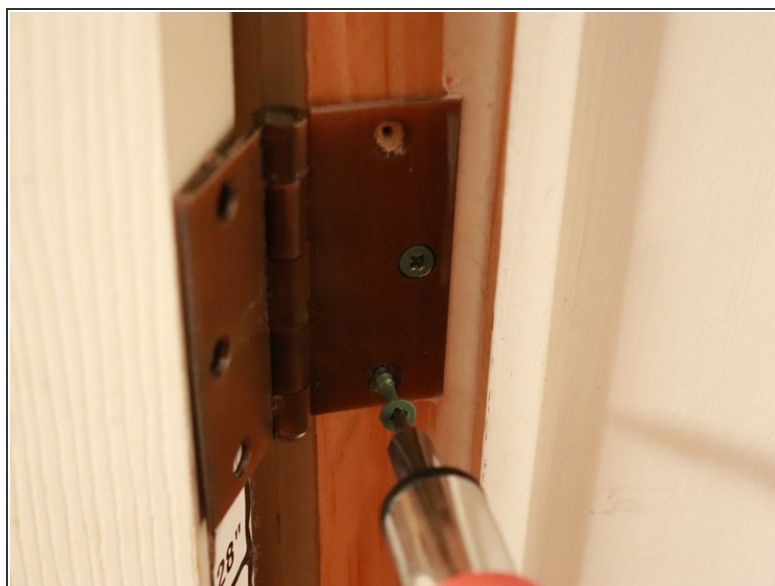
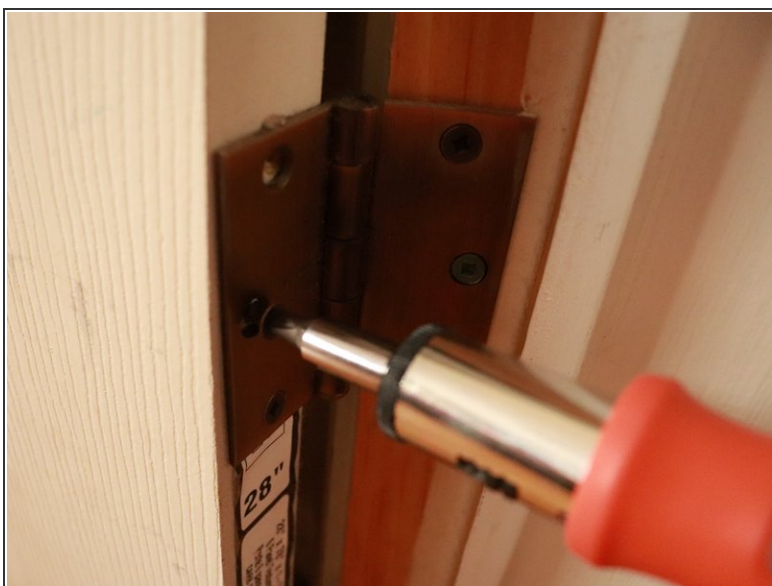
- Use two sturdy pieces of wood or cardboard that can keep the door in place and put them underneath the door.
- ⓘ Make sure that the door isn't slanted or tilted to make it easier to replace the new door hinge.

Step 3



- Remove the three screws from the hinge that are connected to the door by using a Phillips 1 screwdriver.
- Remove the three screws from the hinge that are connected to the door frame using a Phillips #1 screwdriver.

Step 4



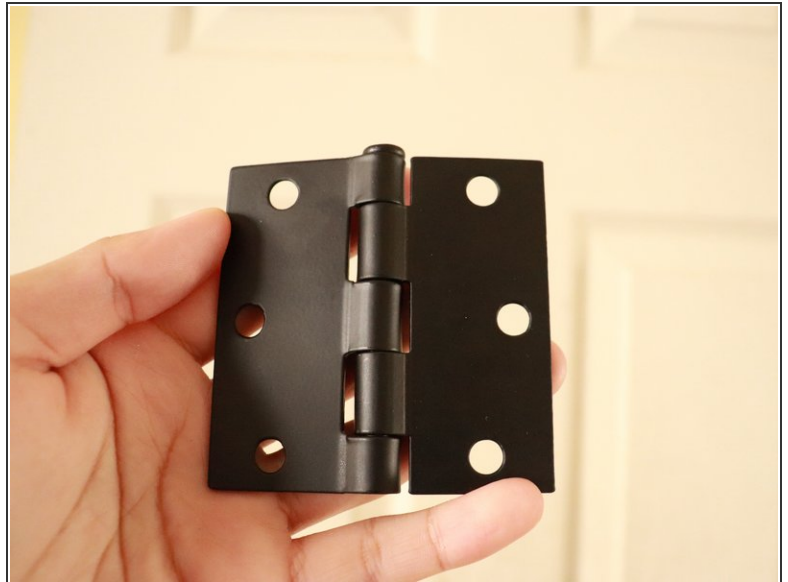
- Repeat Step 3 with the bottom hinge on the door.

Step 5



- Rub sandpaper on the areas where the new hinges will be.
- i** This makes sure that splinters or any wood debris from both the frame and the door will be removed.

Step 6



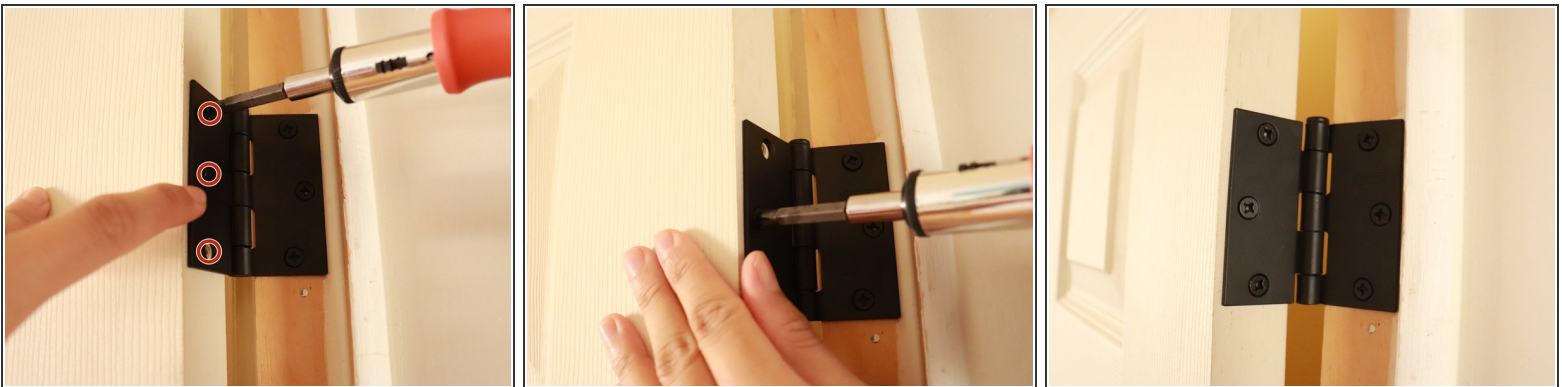
- i** When replacing your new door hinge, make sure that the hinge that is facing towards you can be fully closed

Step 7



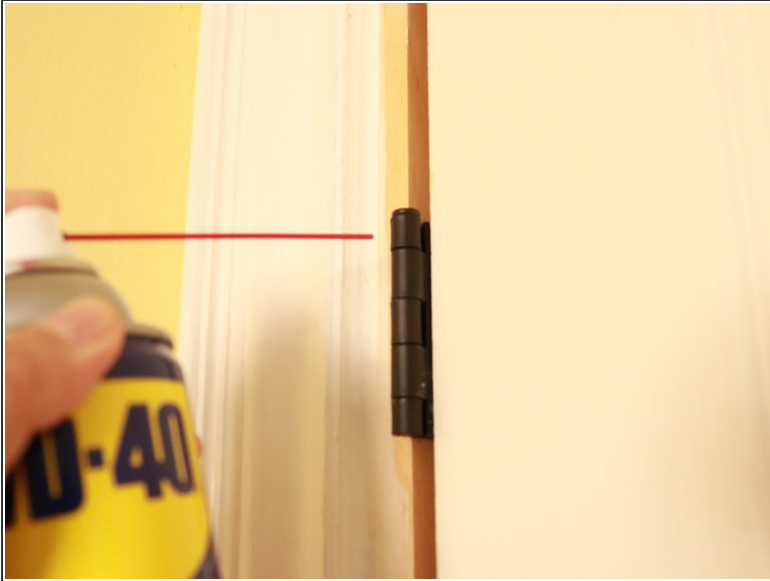
- Align the new door hinge with the screw holes in the frame and screw in the new door hinge in the frame.
- Repeat this with the bottom area of the door.

Step 8



- Align the new door hinge with the screw holes in the door and screw in the new door hinge.
- Repeat this with the bottom area of the door.

Step 9



- Spray a small amount of WD-40 at the back top and bottom hinge and wipe it down with an old rag.