



Samsung GT-E1200I Teardown

Written By: Stefano De Rossi






TOOLS:


- [Essential Electronics Toolkit](#) (1)
-

Step 1 — Remove the back cover and the battery

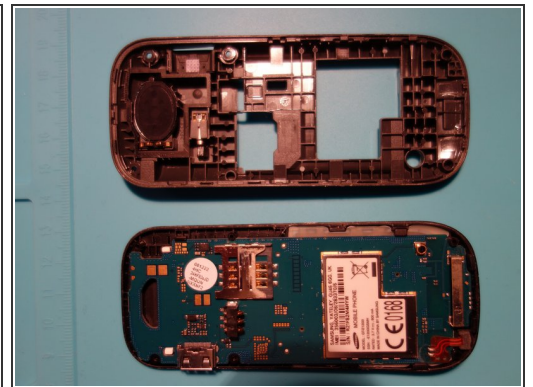


 I have used the Jimmy for this job.

 Be careful when you pry with your Jimmy. It can hurt you if you use it the wrong way.

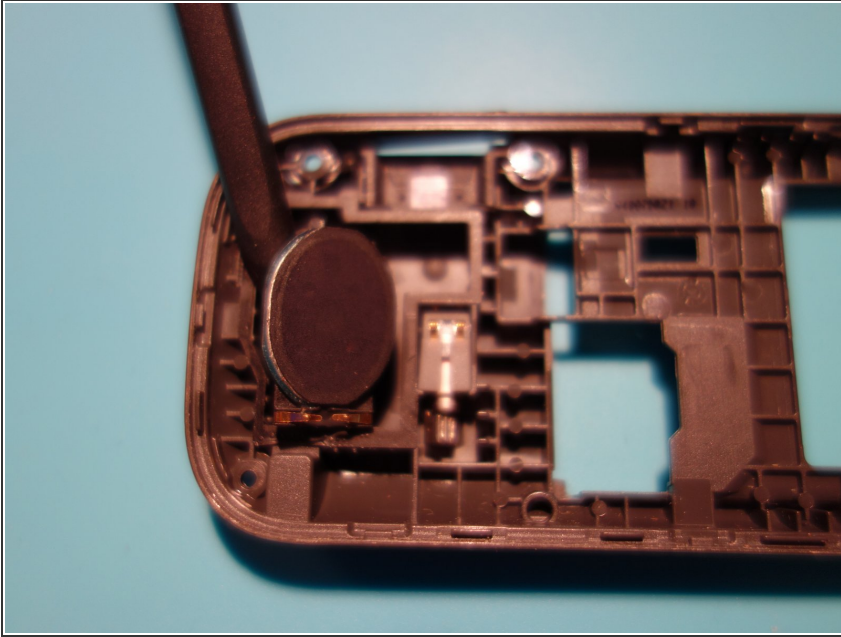
 All the tools featured in this guide are available in the Pro Tech Toolkit.

Step 2 — Remove the inside panel



- Use a Phillips #00 screwdriver to remove the three screws.
- Pry and remove the panel with an opening pick.

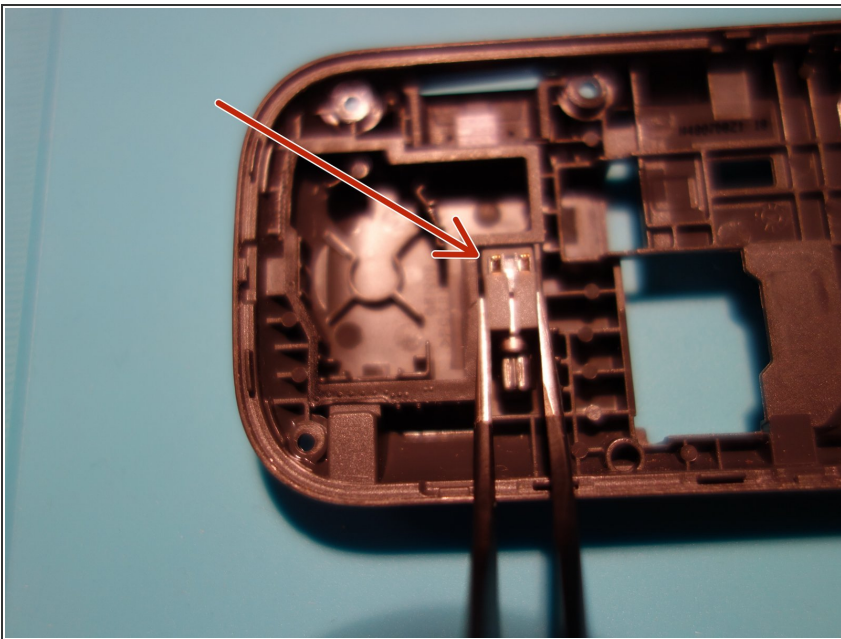
Step 3 — Speaker



- Remove the speaker with a spudger.

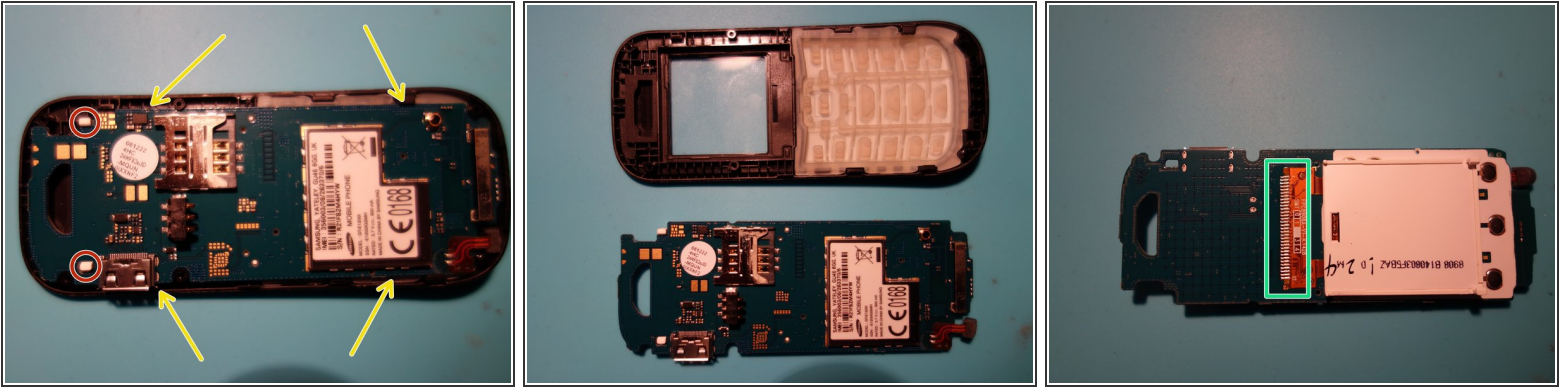
⚠ Do not force it off. If you do, you could break your speaker.

Step 4 — Vibracall



- Remove the vibracall engine with the tweezers

Step 5 — The mainboard



- Remove the mainboard with the spudger:
 - Move on side here for detach the screen
 - Pull up here for remove the mainboard
- i** The screen is soldered to the mainboard. If you are replacing your screen, you need a desoldering iron.

Step 6 — The keyboard



- Separate the rubber side of the keyboard from the rest of structure

Step 7 — That's all



- It's all done!