



Sony SEL55210 Camera Lens Disassembly

This guide will disassemble the Sony SEL55210 E-mount lens.

Written By: Nathan Rose



INTRODUCTION

Identification

This lens can be identified by the markings “E 4.5-6.3/55-210 OSS” in addition to the model/serial number sticker.

Additional Links

[Wikipedia Page](#)

[Sony Support Page](#)



TOOLS:

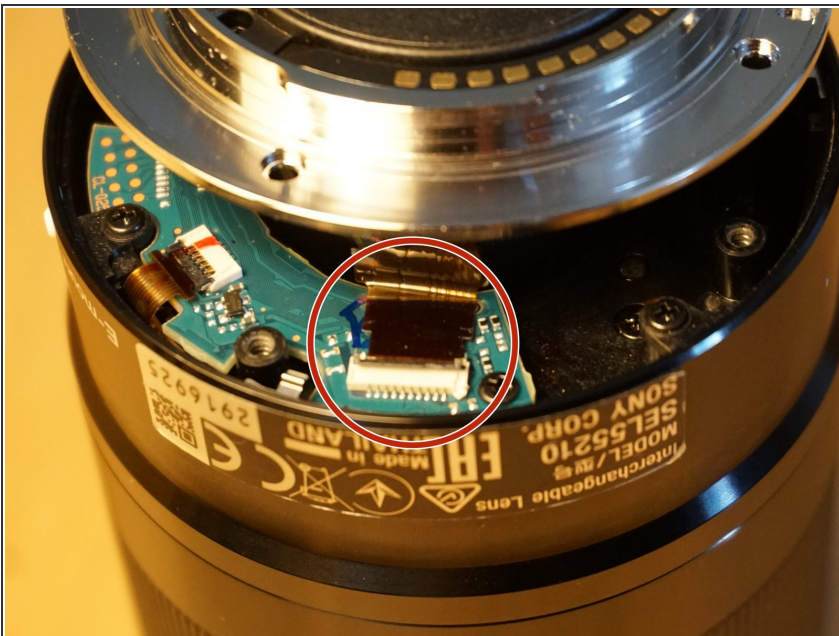
- [Phillips #0 Screwdriver](#) (1)
-

Step 1 — Remove E-mount Bezel



- Remove 4 screws

Step 2 — Disconnect E-mount bezel



- Gently disconnect cable from ZIP connector.
 - ⓘ [iFixit connector guide](#).
- Remove E-mount bezel.
- ⚠ Avoid stressing flat cables.
- ⚠ Sensitive electronics - avoid static discharge.

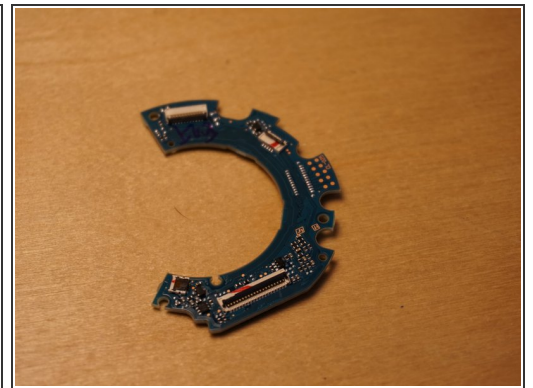
Step 3 — Disconnect Cables




- Gently disconnect 3 cables from ZIP connector.
- The two wider connectors open from the cable side, the thinner connector opens from the back side.

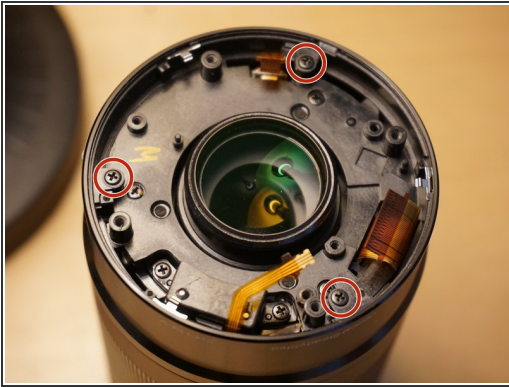
 [iFixit connector guide](#).

Step 4 — Remove PCB



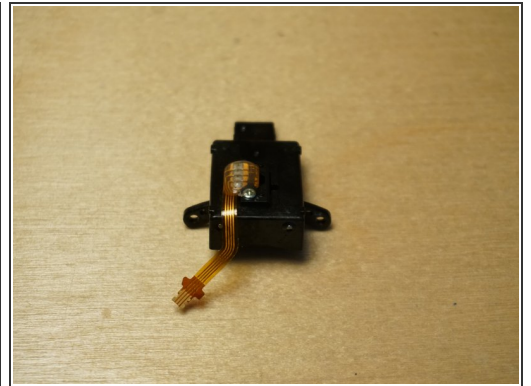
- Remove 3 screws
 - Remove printed circuit board.
-  Sensitive electronics - avoid static discharge.

Step 5 — Remove Outer Bezel



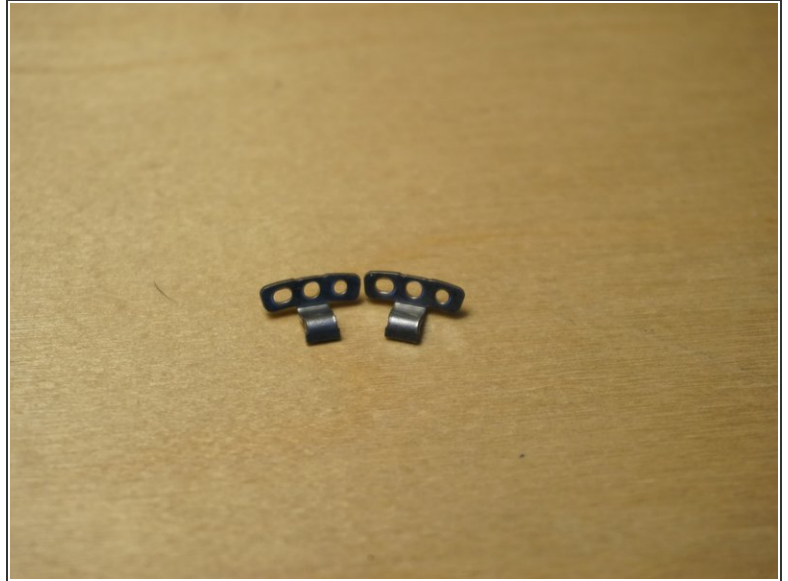
- Remove three screws from outer bezel ears.
- Gently remove bezel.
- ⚠ Be mindful of cables when removing bezel.

Step 6 — Remove Lens Park Sensor



- Remove 2 screws from lens park sensor.
- Remove lens park sensor.

Step 7 — Remove Lens Brackets



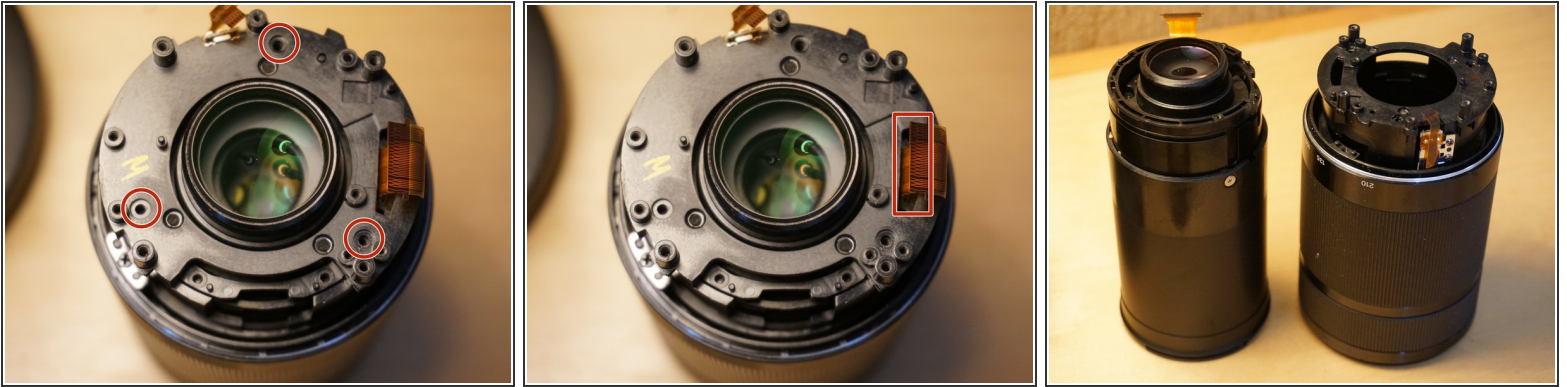
- Remove 2 screws from 2 lens brackets.
- Remove brackets.

Step 8 — Loosen Telescope Sensor



- Loosen (or remove) 2 telescope sensor screws.
- ⚠ Do not remove this sensor - it is connected via a flat cable to the focus ring.

Step 9 — Remove External Lens Encasement



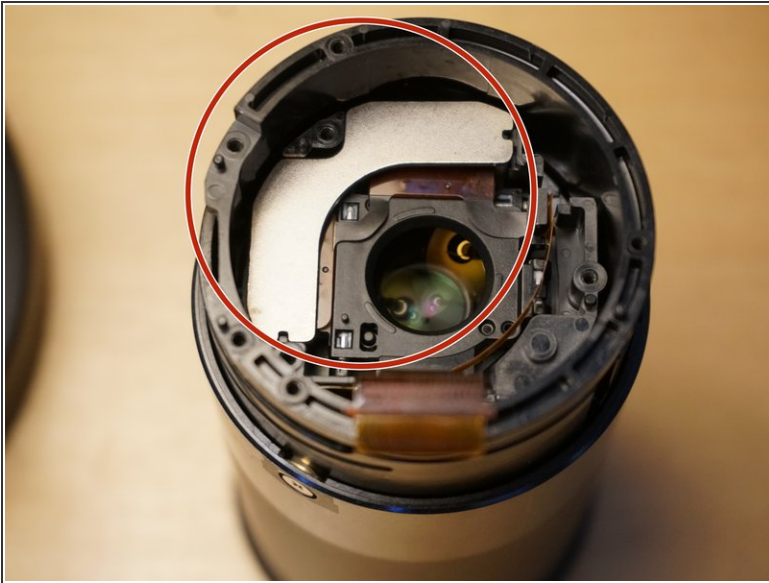
- Remove 3 screws.
- Pull lens out of external encasement.
 - Maneuver the telescope sensor so that it unmates from the slot in the internal lens body
 - Carefully feed the OSS/AF motor wire through the slot.

Step 10 — Remove Lens Element



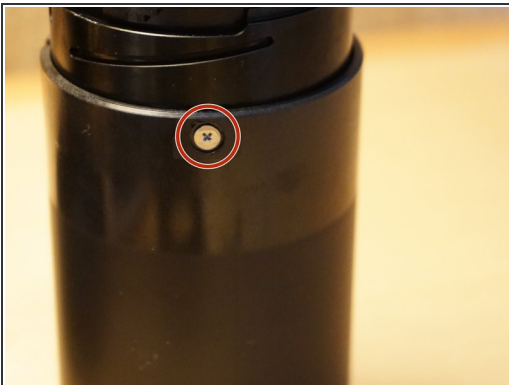
- Remove 3 screws
- Remove the lens element.

Step 11 — Remove OSS Retainer



- Gently pry up magnetic OSS retaining bracket.

Step 12 — Remove Outer Lens Sleeve Fasteners



- Remove 3 screws from the aperture end of the telescoping mechanism.
- Lift lens to reveal and remove 3 brass/nylon nuts.

Step 13 — Remove Outer Optical Lens Sleeve



- Remove outer optical lens sleeve.

Step 14 — Remove Slide Guides



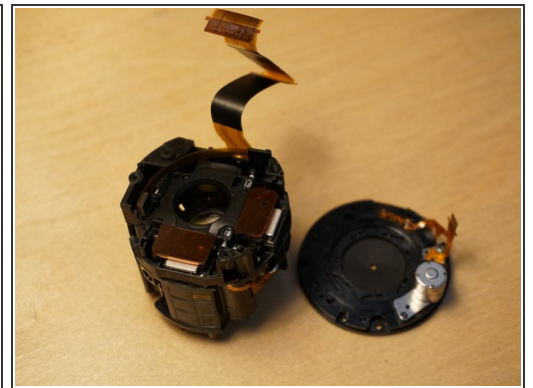
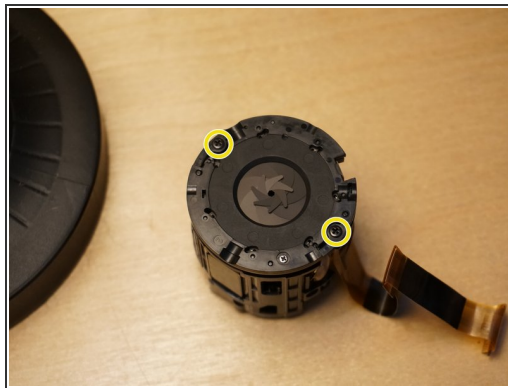
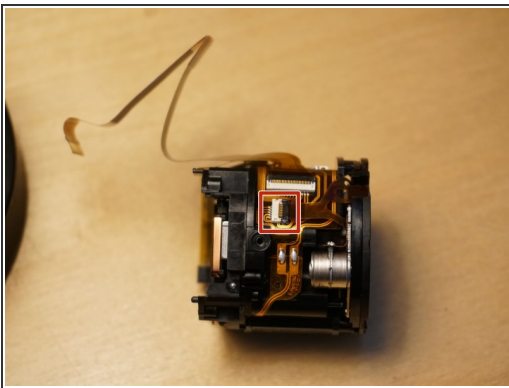
- Remove 3 screws from the slide guides on the aperture end of the lens.
- Remove 3 black nylon slide washers from the lens encasement.

Step 15 — Remove OSS/AF Mechanism



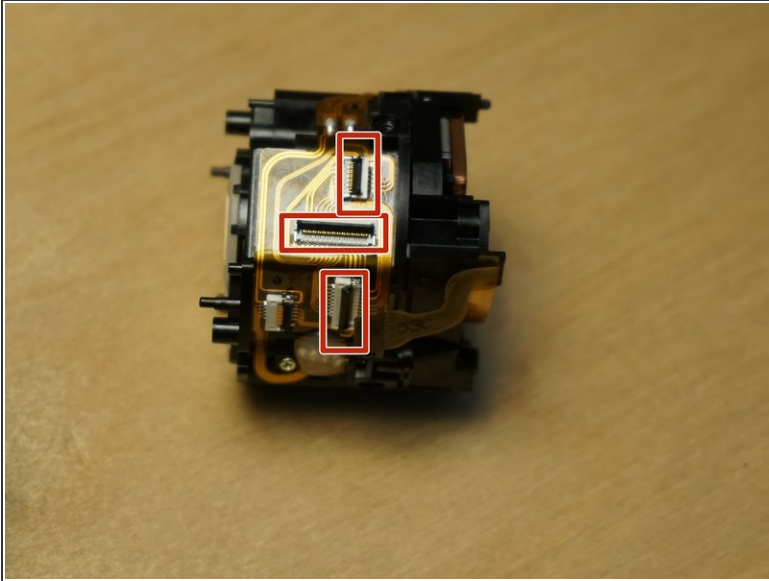
- Remove the OSS/AF mechanism.
- Gently pull the cable up and out from the lens encasement groove.

Step 16 — Remove Aperture Mechanism



- Remove Kapton tape from aperture motor connector.
 - ☑ Save tape for reassembly
- Disconnect aperture connector.
- Remove 2 screws from aperture ring.
- Remove aperture mechanism.

Step 17 — Separate OSS Mechanism



- Disconnect 3 cables.
- Remove 3 screws
- Gently separate the OSS mechanism.

To reassemble your device, follow these instructions in reverse order.