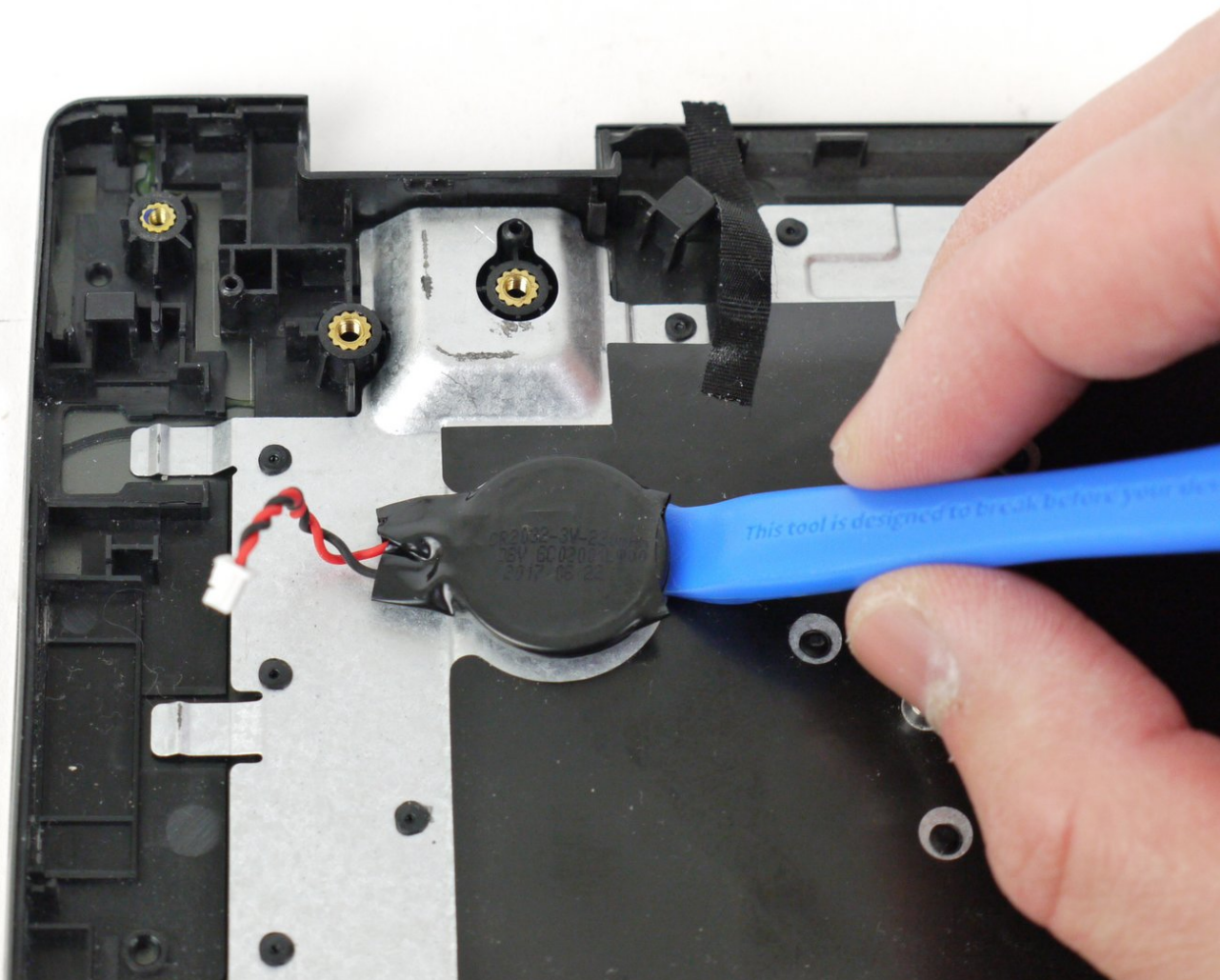




Lenovo IdeaPad Flex 5-1570 CMOS Battery Replacement

This guide will help you remove and replace the CMOS battery in the Lenovo IdeaPad Flex 5-1570.

Written By: Justin Ogihara



INTRODUCTION

The CMOS (Complementary Metal Oxide Semiconductor) battery powers the BIOS firmware in a computer. The CMOS battery is a chip that is typically found in laptops rather than desktops. When you unplug your laptop from its power source, the BIOS relies on the CMOS battery for power. Most CMOS batteries in laptops will last 2 to 10 years from the date they were manufactured.

Common CMOS battery failure symptoms include the following:

- Constant beeping noise coming from the motherboard
- Date and time of the computer have been reset
- Hardware drivers are missing or have disappeared
- Can't connect to the Internet
- Laptop won't boot up

If your device is experiencing any of the above symptoms, it may be time to replace the CMOS battery. Follow the instructions below to remove and replace the CMOS battery in the Lenovo IdeaPad Flex 5-1570 laptop.



TOOLS:

- [Phillips #00 Screwdriver](#) (1)
 - [iFixit Opening Tools](#) (1)
 - [Spudger](#) (1)
 - [Nylon Tipped Tweezers](#) (1)
 - [Soldering Iron](#) (1)
 - [Solder](#) (1)
-

Step 1 — Back Panel



- Remove the ten 5 mm Phillips #00 screws that are holding the back panel on.

Step 2



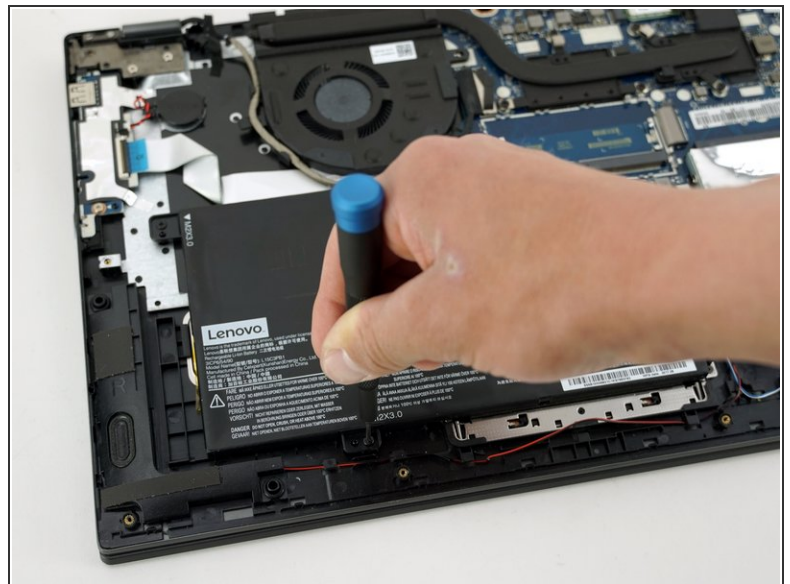
- Use a spudger to pry open the back case at the two hinge cutouts.
- Gently use the plastic opening tool around the edges of the laptop to pry up the clips holding the rest of the back panel.

Step 3



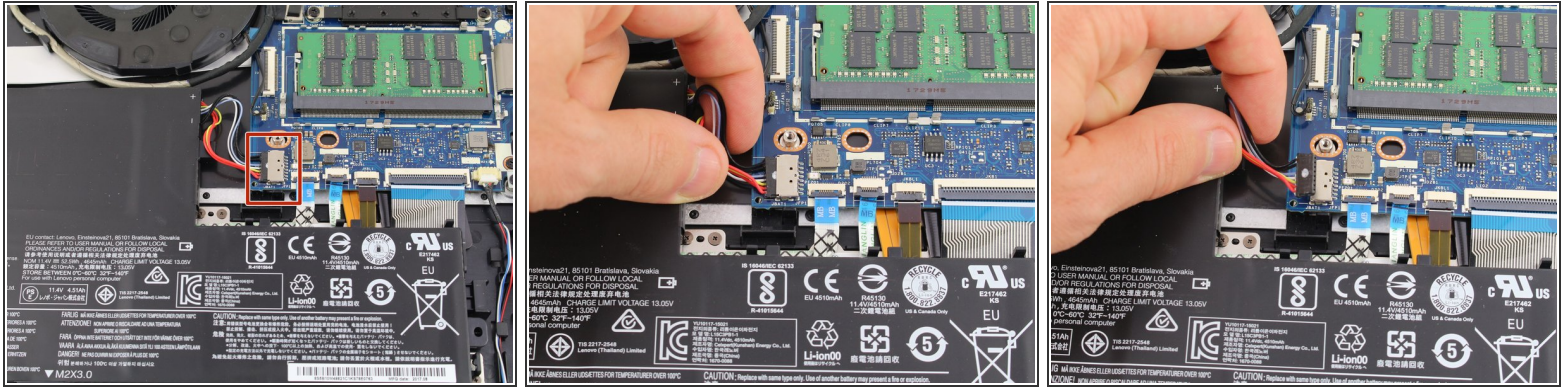
- Once all the clips have been disengaged, lift off the back cover.

Step 4 — Battery



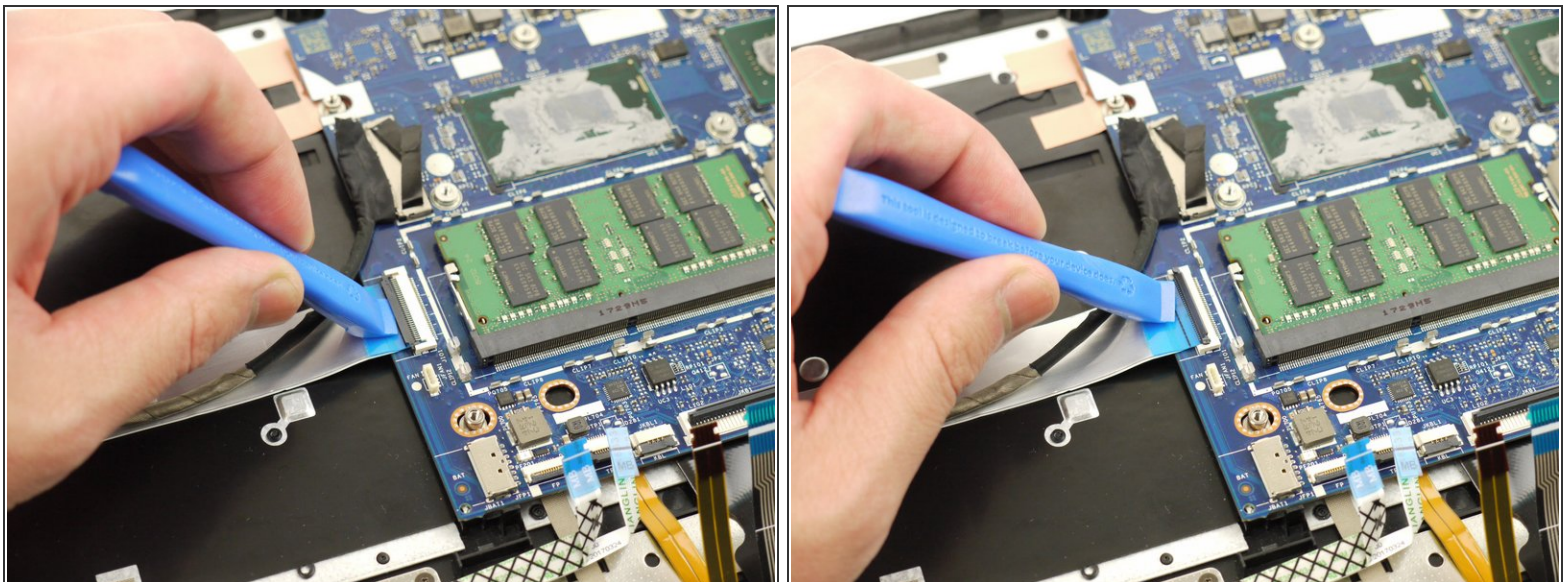
- Remove the two 5 mm Phillips #00 screws that secure the battery in place.

Step 5



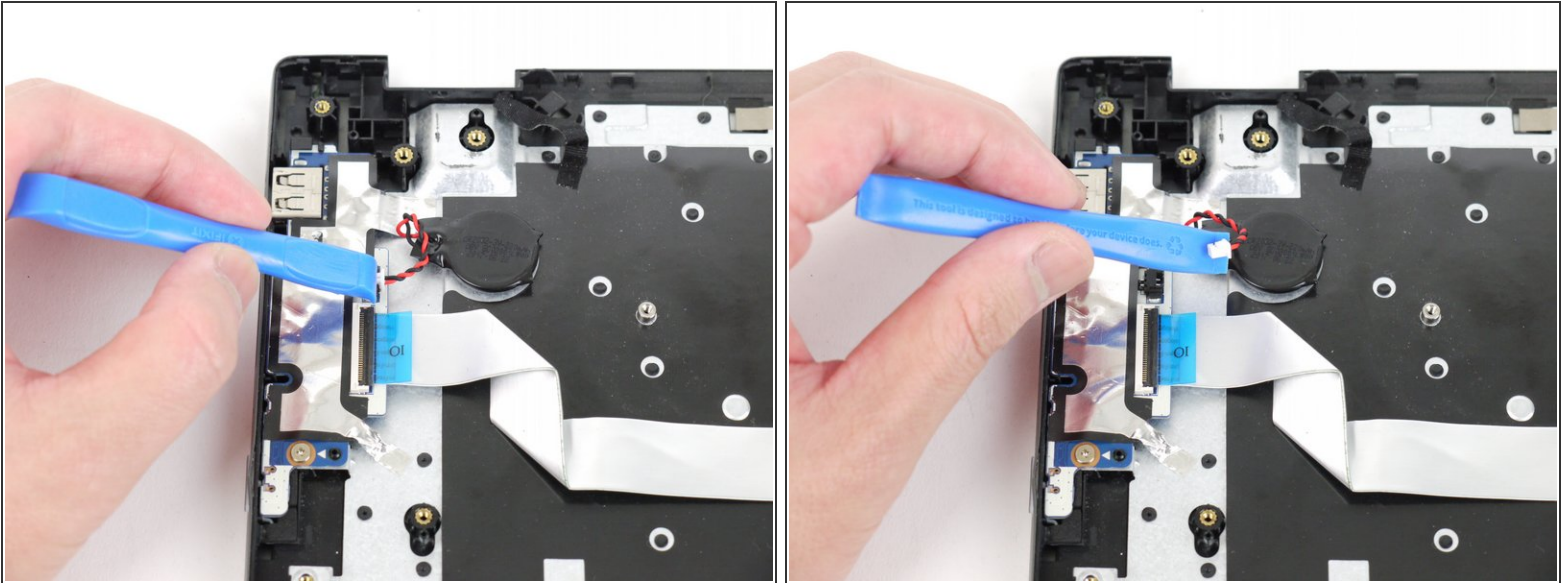
- Using your fingers, grasp the entire bundle of wires to pull the battery cable from its connector. This will cut off power to the motherboard.
- ⚠ Be sure to apply even pressure across the wires and connector to not damage the battery cable.
- Remove the battery from the device.

Step 6 — Daughterboard



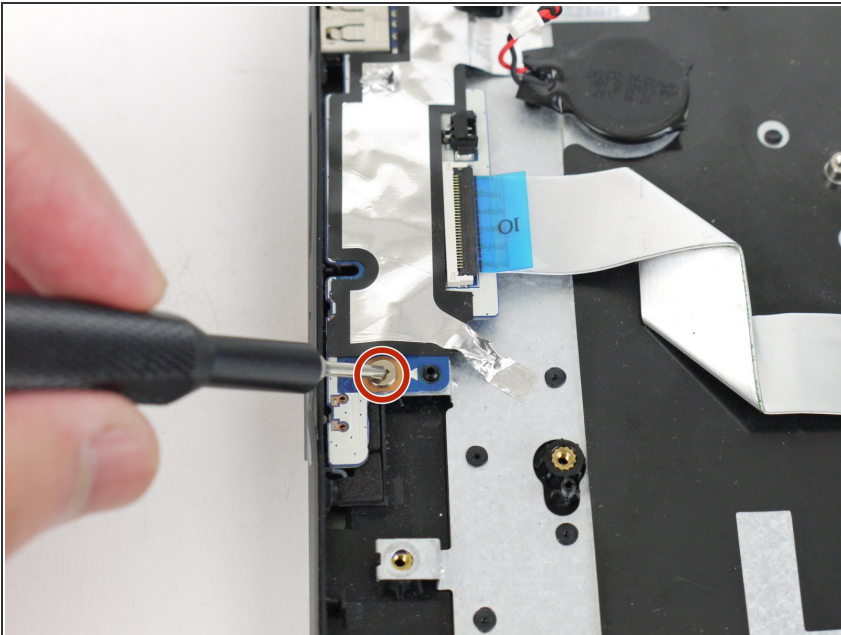
- Using the plastic opening tool, unlock the connector for the side ports panel and disconnect the cable from the motherboard.

Step 7



- Using the plastic opening tool, disconnect the CMOS battery from the daughterboard by pushing it out towards the direction of the CMOS battery.

Step 8



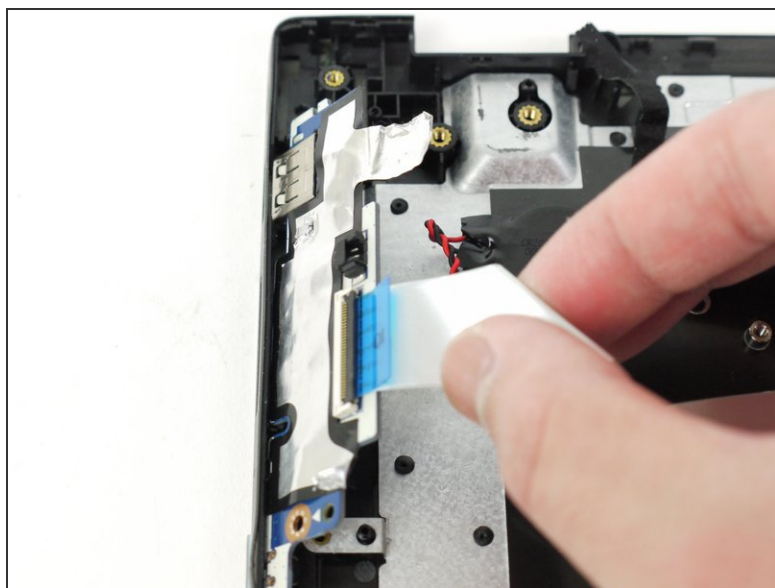
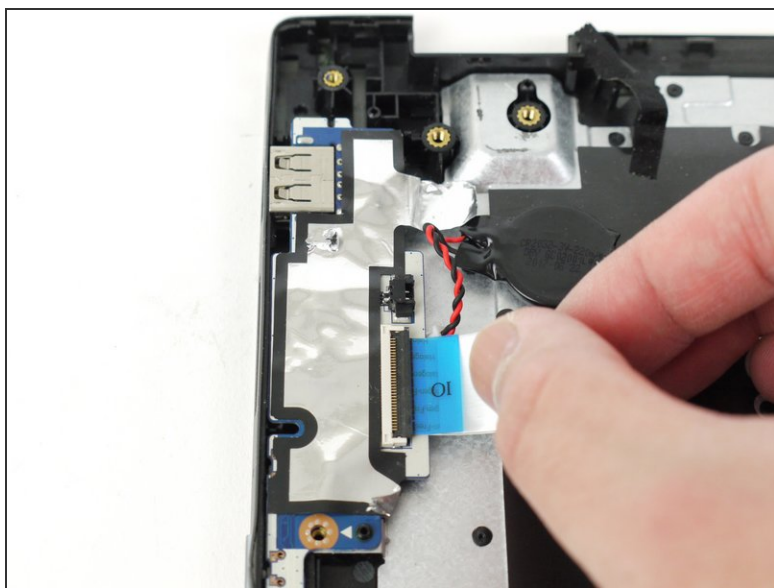
- Using the Phillips #00 screwdriver, remove the single 5 mm screw.

Step 9



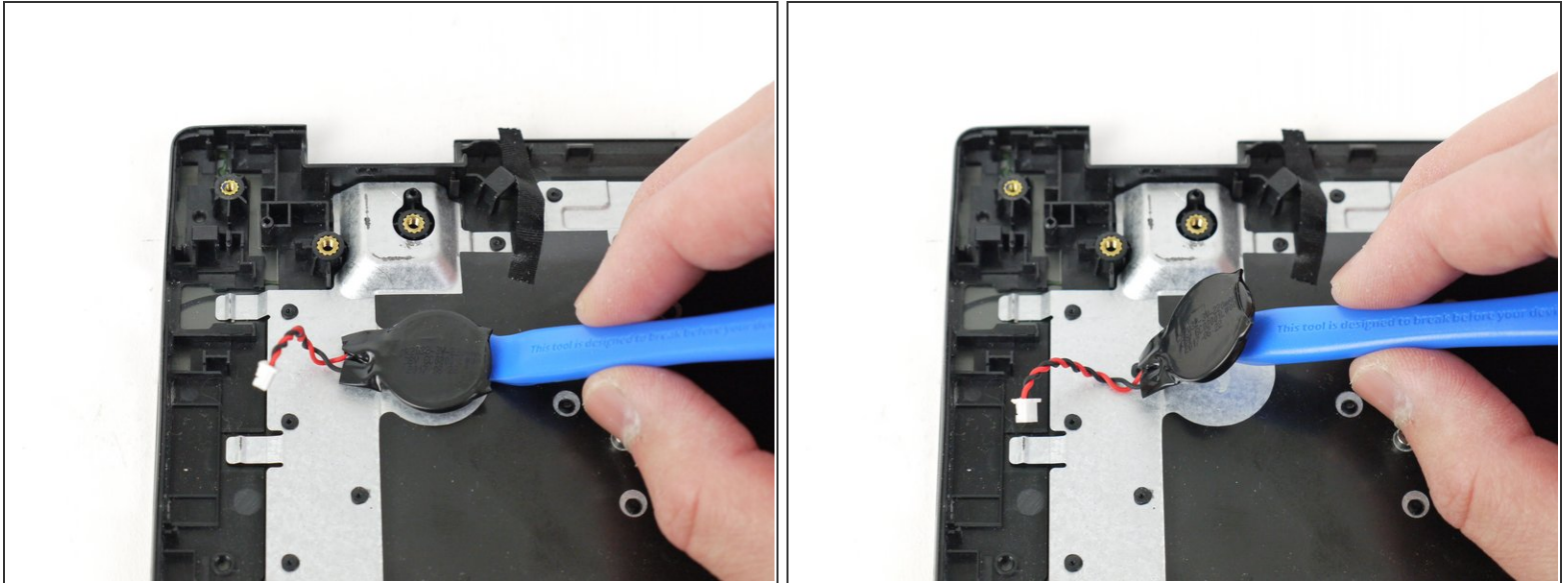
- Using the iFixit Opening tool, remove the silver piece of tape from the device.

Step 10



- Lift the daughterboard up and out of the device.

Step 11 — CMOS Battery



- Using a plastic opening tool, pry the CMOS battery up and remove it from the device.

To reassemble your device, follow these instructions in reverse order.

Take your e-waste to an [R2 or e-Stewards certified recycler](#).