



DeLonghi ESAM xxxx - (Different Types)

replace grinder

When the grindstones wear out, the coffee...

Written By: VauWeh



INTRODUCTION

When the grindstones wear out, the coffee becomes thin and stale. With this grinder, replacing the grindstones is a bit difficult. The complete grinding mechanism is more expensive than the grinding stones themselves, but it is quite easy to replace. This guide shows you how.



TOOLS:

- [Long shaft Phillips #2 Screwdriver](#) (1)
- [New Item](#) (1)



PARTS:

- [New Item](#) (1)

Step 1 — Preparations



 Pull the plug!

- Remove the drip tray, the water tank and the pulp container.

Step 2 — Unscrew the rear panel



- The rear panel and side panels are attached with six phillips screws #2. Screw them out.

Step 3 — Remove right side panel



- Slide the right side panel about 2 cm to the back.
- Then solve it.

Step 4 — Remove left side panel



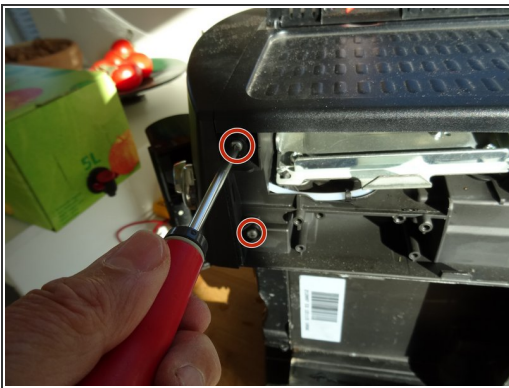
- The left side is a bit stuck. Place a plastic opening tool in the gap between the front and left side panel above the opening for the water tank. Lift the gap slightly larger.
- Then place the tool in the gap between the front and left side panel under the opening for the water tank. Increase the gap and push the side part about 2 cm to the rear.
- Lift out the left side piece.

Step 5 — Remove rear panel



- Take out the rear panel.

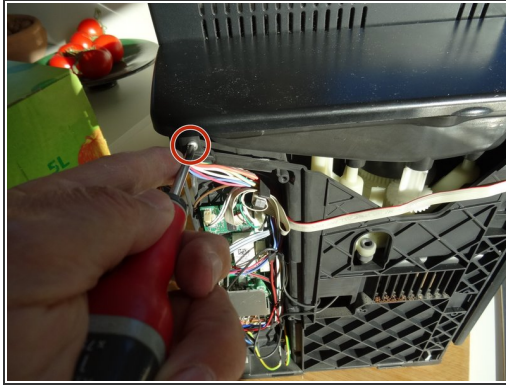
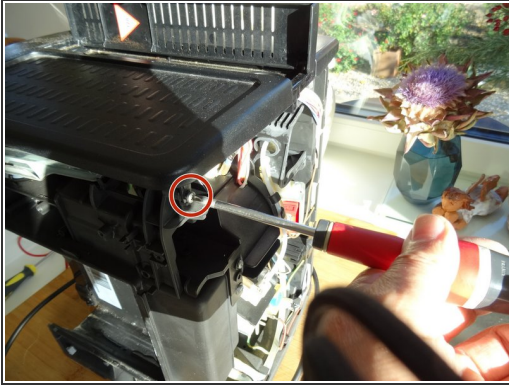
Step 6 — Unscrew top cover



- The front panel is secured with four PH2 Phillips screws, two left and one right each. Turn it out.
- Use a plastic opening tool to lever off the steam tap.
- Carefully pull the front panel about 1 cm forward so that there is a gap between the top cover and the front panel,

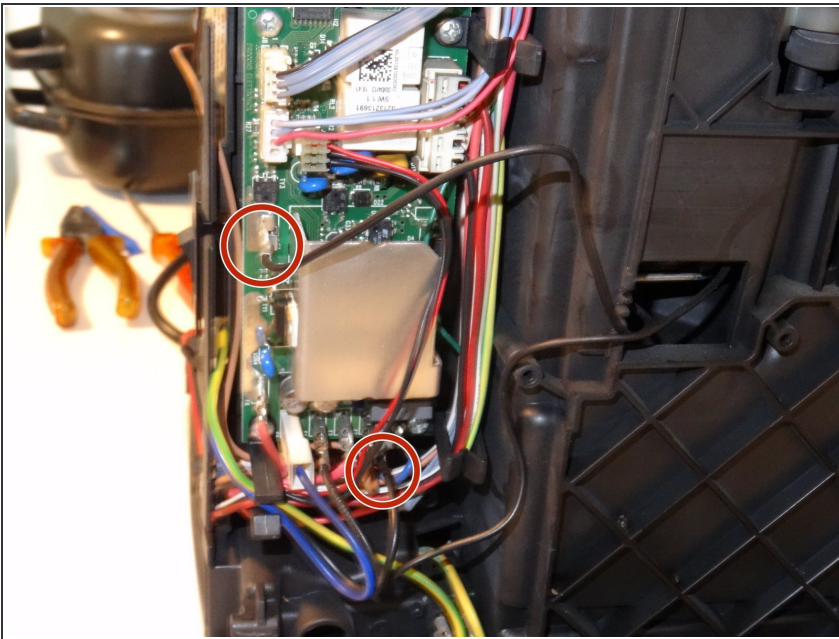
⚠ Do not pull the front panel too far, it is still attached with different hoses and cables.

Step 7 — Remove top cover



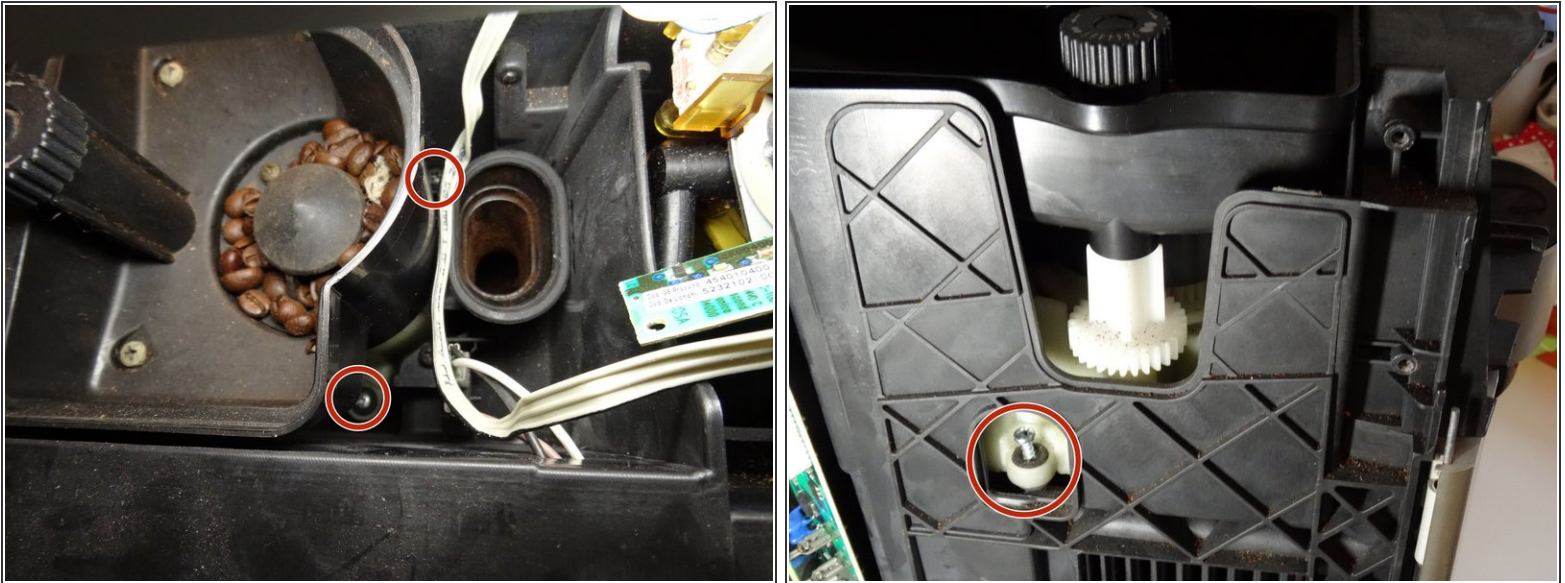
- Two Phillips screws PH2 hold the lid at the back. Turn it out.
- Lift the lid upwards.

Step 8 — Grinder



- Pull the flat connectors of the two black cables that lead to the grinder from the main circuit board.

Step 9



- The grinder is attached from above with three Phillips screws. The screws are somewhat hidden and you need a long-shafted screwdriver, possibly a flexible drive. Unscrew the three screws.
- ⓘ You can also dismantle the bean container beforehand.

Step 10



- Lift the grinder up and out. Pay attention to the two black cables.
- If your spare part does not have a bean container, you still have to transfer it to the new part.

Work the steps in reverse order to reassemble your device.