



OnePlus Nord Battery Replacement

Use this guide to replace a worn-out or dead...

Written By: Adriana Zwink



INTRODUCTION

Use this guide to replace a worn-out or dead battery in your OnePlus Nord.

If your battery is swollen, [take appropriate precautions](#). For your safety, **discharge your battery below 25%** before disassembling your phone. This reduces the risk of a dangerous thermal event if the battery is accidentally damaged during the repair.

You'll need replacement adhesive to reattach components when reassembling the device.

TOOLS:


[iOpener](#) (1)
[Suction Handle](#) (1)
[iFixit Opening Picks \(Set of 6\)](#) (1)
[Phillips #00 Screwdriver](#) (1)
[Spudger](#) (1)

PARTS:

[OnePlus Nord Battery](#) (1)
[Tesa 61395 Tape](#) (1)

Step 1 — Loosen the rear glass adhesive



- Switch off your phone.
 - [Heat an iOpener](#) to loosen the adhesive beneath the rear glass. Apply the iOpener for at least two minutes. If you have a heatbed with precise temperature control (like any FDM 3D printer with heatbed) 45°C is enough. You might want to repeat this step several times during the rear glass removal.
-  A hair dryer, heat gun, or hot plate may also be used, but be careful not to overheat the phone—the AMOLED display and internal battery are both susceptible to heat damage.

Step 2 — Create a gap



- Apply a suction cup to the back of the phone, as close as possible to the center of the right edge.
- Pull on the suction cup to create a gap between the rear glass and the frame.
- Insert an opening pick into the gap.

Step 3 — Slice the adhesive



- Slide the opening pick along the edge to the bottom right corner.
 - Leave the opening pick in its place to prevent the adhesive from resealing.
- ❗ Once you have inserted an opening pick, feel free to remove the suction cup or continue to use it for a better grip during this process.

Step 4



- Insert a second opening pick under the bottom right corner.
 - Slide the opening pick along the edge to the top right corner.
- ❗ If you have trouble with cutting, you can use the [iOpener](#) again to soften the adhesive.
- Leave the opening pick in its place to prevent the adhesive from resealing.

Step 5



- Insert a third opening pick under the top right corner of the back cover.
- Slide the tip of the opening pick along the edge of the phone to the top left corner to cut the adhesive.
- Leave the opening pick in the top left corner to prevent the adhesive from resealing.

Step 6



- Insert a fourth opening pick under the top left corner.
- Slide the opening pick along the edge to the bottom left corner to cut the adhesive.
- Leave the opening pick in its place to prevent the adhesive from resealing.

Step 7



- Insert a fifth opening pick under the bottom left corner.
- Slide it along the the edge to the bottom right corner to cut the remaining adhesive.

Step 8 — Remove the back cover



- Remove the back cover.
- ☑ After installing the back cover, apply strong, steady pressure to your phone for several minutes to help the adhesive form a good bond—a stack of heavy books works well.

Step 9 — Remove the motherboard cover



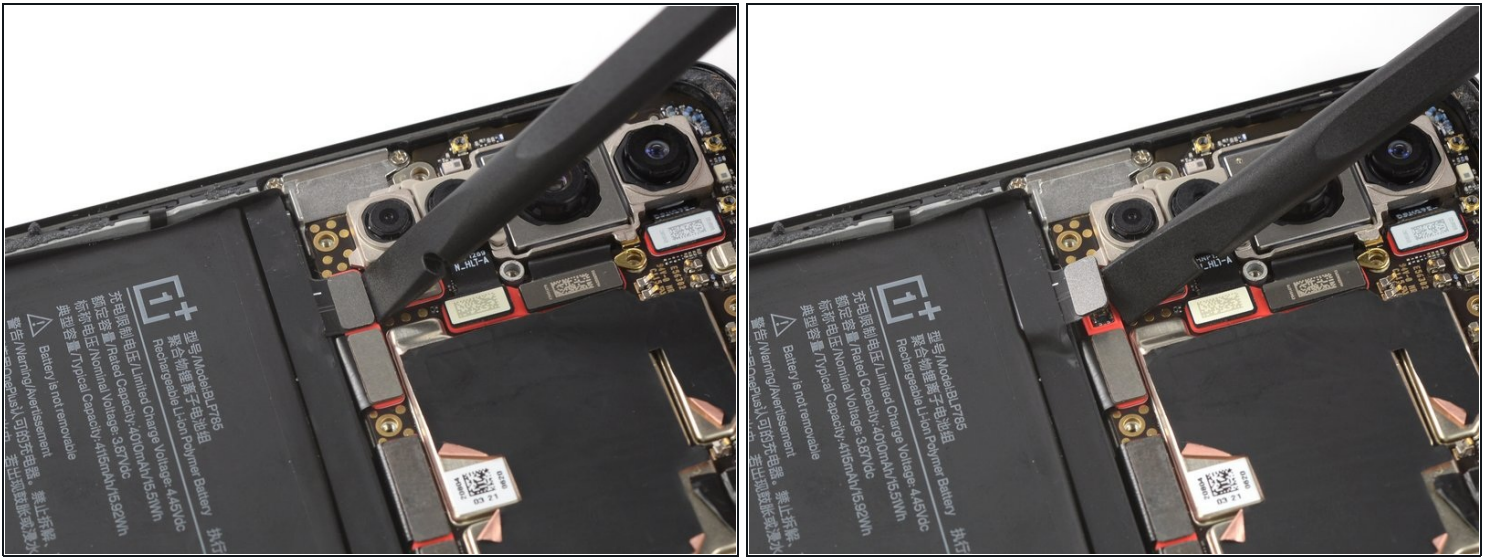
- Use a Phillips #00 screwdriver to remove the ten 3.6 mm-long screws from the motherboard cover.

Step 10



- Insert the tip of an opening pick under the motherboard cover.
- Use the opening pick to lift the motherboard cover up and release the plastic clips that holds the cover in its place.
- Remove the motherboard cover.

Step 11 — Disconnect the battery



- Use a spudger to disconnect the battery by prying the connector straight up from its socket.

Step 12 — Remove the battery



- Peel back the red pull tab and the black sticker from the edge of the battery.
- Pull the tab up steadily to break up the adhesive holding the battery in place.
 - ❗ If the adhesive is too strong, place a [heated iOpener](#) on the screen for two minutes or use a heat gun to soften the adhesive beneath the battery.

Step 13



- Remove the battery.

⚠ Do not reinstall a damaged or deformed battery, as doing so is a potential safety hazard.

i You can reuse the old adhesive tape in case it's still sticky. If you need to remove it, replace it with new custom cut adhesive tape.

If possible, turn on your device and test your repair before installing new adhesive and resealing.

Secure the new battery with pre-cut adhesive or double-sided adhesive tape. In order to position it correctly, apply the new adhesive into the device at the places where the old adhesive was located, not directly onto the battery. Press the new battery firmly into place.

To reassemble your device, follow these instructions in reverse order. Apply new adhesive where necessary after cleaning the relevant areas with isopropyl alcohol (>90%).

For optimal performance, **calibrate your newly installed battery**: Charge it to 100% and keep charging it for at least 2 more hours. Then use your device until it shuts off due to low battery. Finally, charge it uninterrupted to 100%.

Take your e-waste to an [R2 or e-Stewards certified recycler](#).

Repair didn't go as planned? Try some [basic troubleshooting](#), or ask our [Answers community](#) for help.