



Nintendo Switch Lite Shield Plate Replacement

Remove or replace the shield plate in the Nintendo Switch Lite.

Written By: Craig Lloyd



INTRODUCTION

Follow this guide to remove or replace the shield plate inside the Nintendo Switch Lite.

The Switch Lite uses JIS screws, but you can use a Phillips screwdriver in a pinch. Be very careful not to strip the screws. iFixit's Phillips bits are designed to be cross-compatible with JIS-style screws.

Note: Removing the shield plate will require cleaning off thermal paste and reapplying it to the heatsink.



TOOLS:

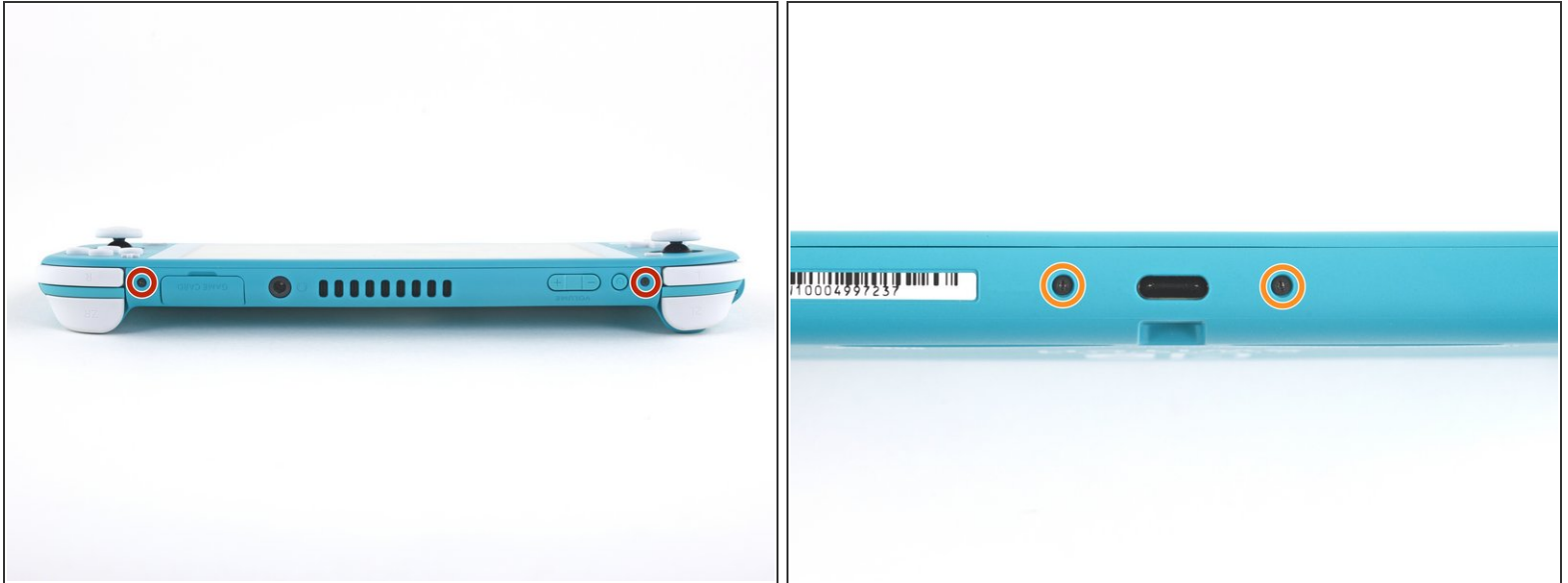
- [Tri-point Y00 Screwdriver](#) (1)
 - [Phillips #00 Screwdriver](#) (1)
 - [iFixit Opening Tool](#) (1)
 - [Spudger](#) (1)
 - [Microfiber Cleaning Cloths](#) (1)
 - [Isopropyl Alcohol](#) (1)
 - [Thermal Paste](#) (1)
-

Step 1 — Remove the back panel screws



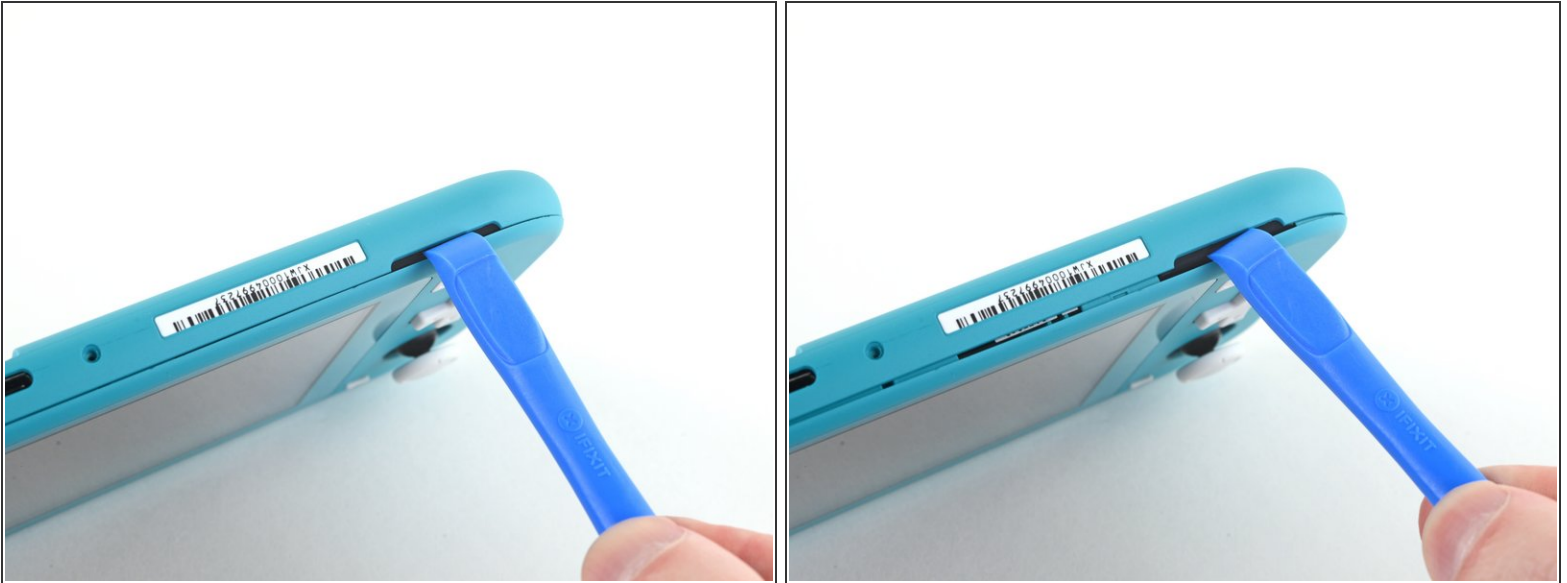
- ⚠ Before beginning this repair, make sure that the device is completely turned off.
- Use a Y00 screwdriver to remove the four 6.3 mm-long screws securing the back panel.
- ℹ Throughout this repair, [keep track of each screw](#) and make sure it goes back exactly where it came from.

Step 2 — Remove the top and bottom back panel screws



- Use a JIS 000 driver or an official iFixit PH 000 driver to remove the following screws securing the back panel:
 - Two 3.6 mm-long screws on the top of the device
 - Two 3.6 mm-long screws on the bottom of the device
- ⓘ To prevent these tight screws from [stripping](#), apply firm downward force, work slowly and try a different screwdriver if the screws won't come out.

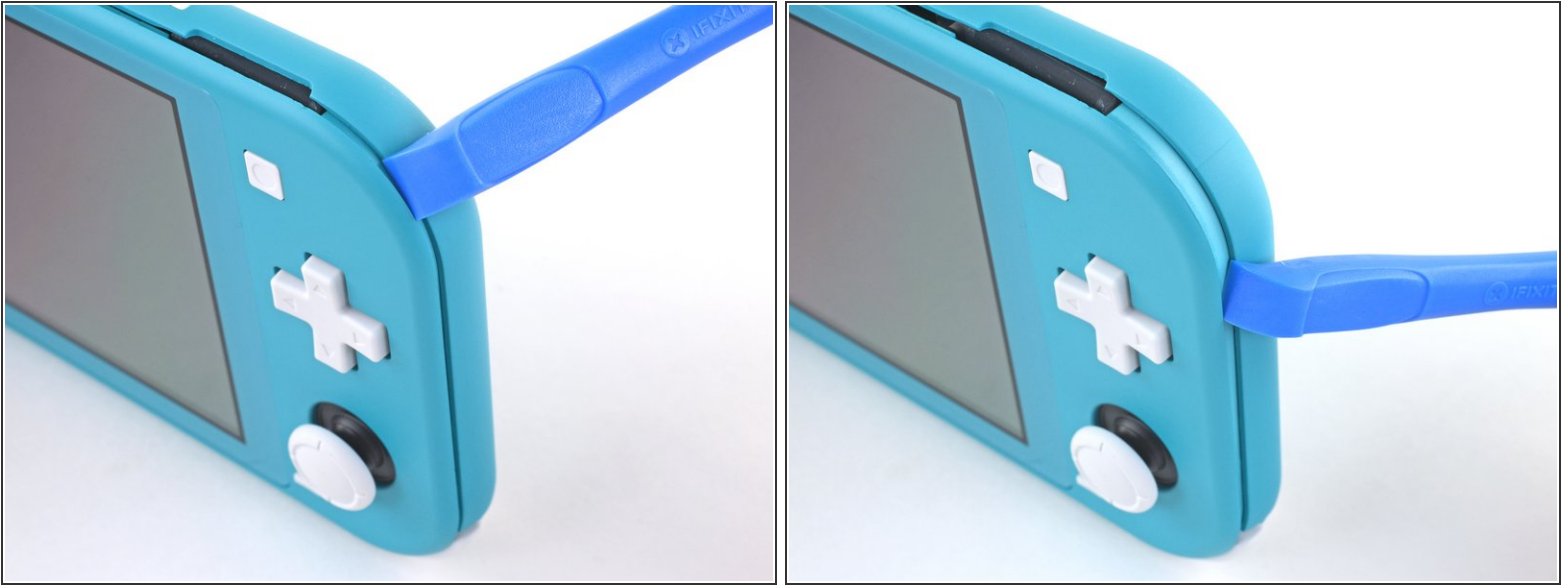
Step 3 — Release the clips securing the back panel



- Insert an opening tool into the left speaker grille on the bottom of the device.
- Twist the opening tool to release the clips securing the back panel.

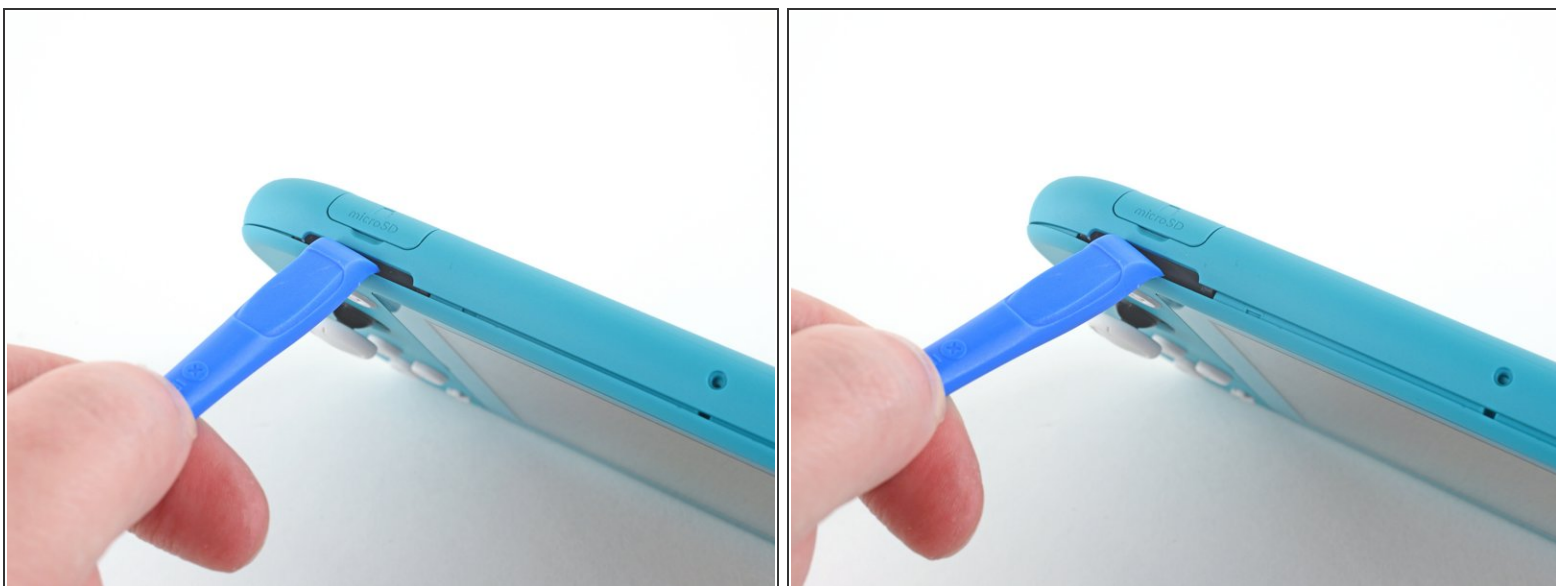
⚠ Avoid inserting the opening tool further than required to prevent damage to the speaker module.

Step 4 — Continue releasing the clips around the device



- Slide the opening tool around the bottom-left corner to release the clips on the left side of the device.

Step 5 — Twist to release the clips



- Insert an opening tool into the right speaker grille on the bottom of the device.
- Twist the opening tool to release the clips.

⚠ Avoid inserting the opening tool further than required to prevent damage to the speaker module.

Step 6 — Slide and pry around the corners



- Slide and pry the opening tool around the bottom-right corner to release the clips on the right side of the device.

Step 7



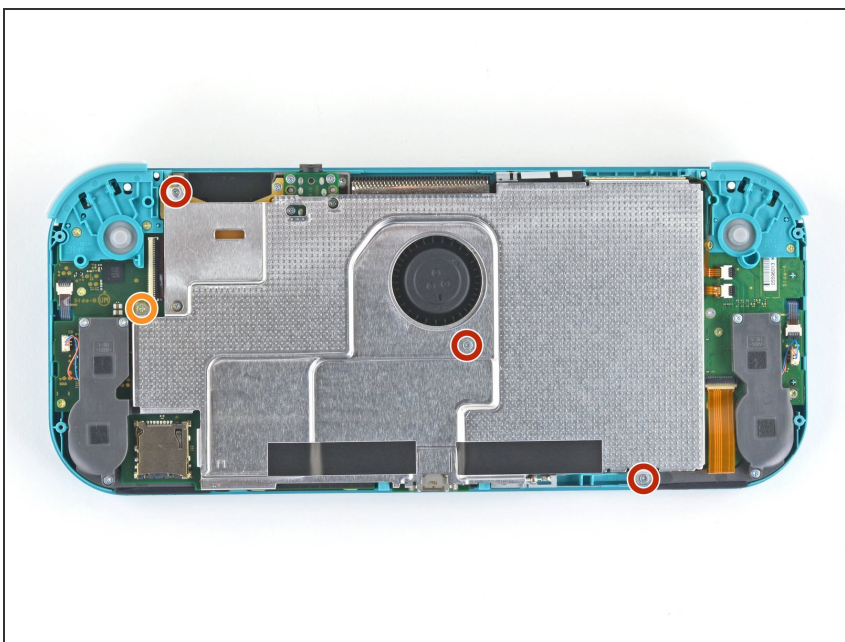
- Continue sliding and prying the opening tool along the gap on the top of the device to release the clips.

Step 8 — Remove the back panel



- Lift the bottom edge of the back panel, opening it like a book.
- Remove the back panel.

Step 9 — Remove the shield plate



- Use a JIS 000 driver or an official iFixit PH 000 driver to remove the following four screws:
 - Three 3.1 mm screws
 - One 4.5 mm screw

Step 10



- Use a spudger or your fingers to lift the shield plate up and out of the device.
 - ❗ You may feel a bit of resistance. This is normal, since the shield plate is slightly bonded to the heat sink with thermal paste.
- Remove the shield plate.
 - ☑ Clean off the old thermal paste from the shield plate and heat sink using isopropyl alcohol and a microfiber cloth. [Apply new thermal paste](#) to the heat sink before reassembly.

To reassemble your device, follow these instructions in reverse order.

Take your e-waste to an [R2 or e-Stewards certified recycler](#).

Repair didn't go as planned? Try some [basic troubleshooting](#), or ask our [Nintendo Switch Lite Answers community](#) for help.