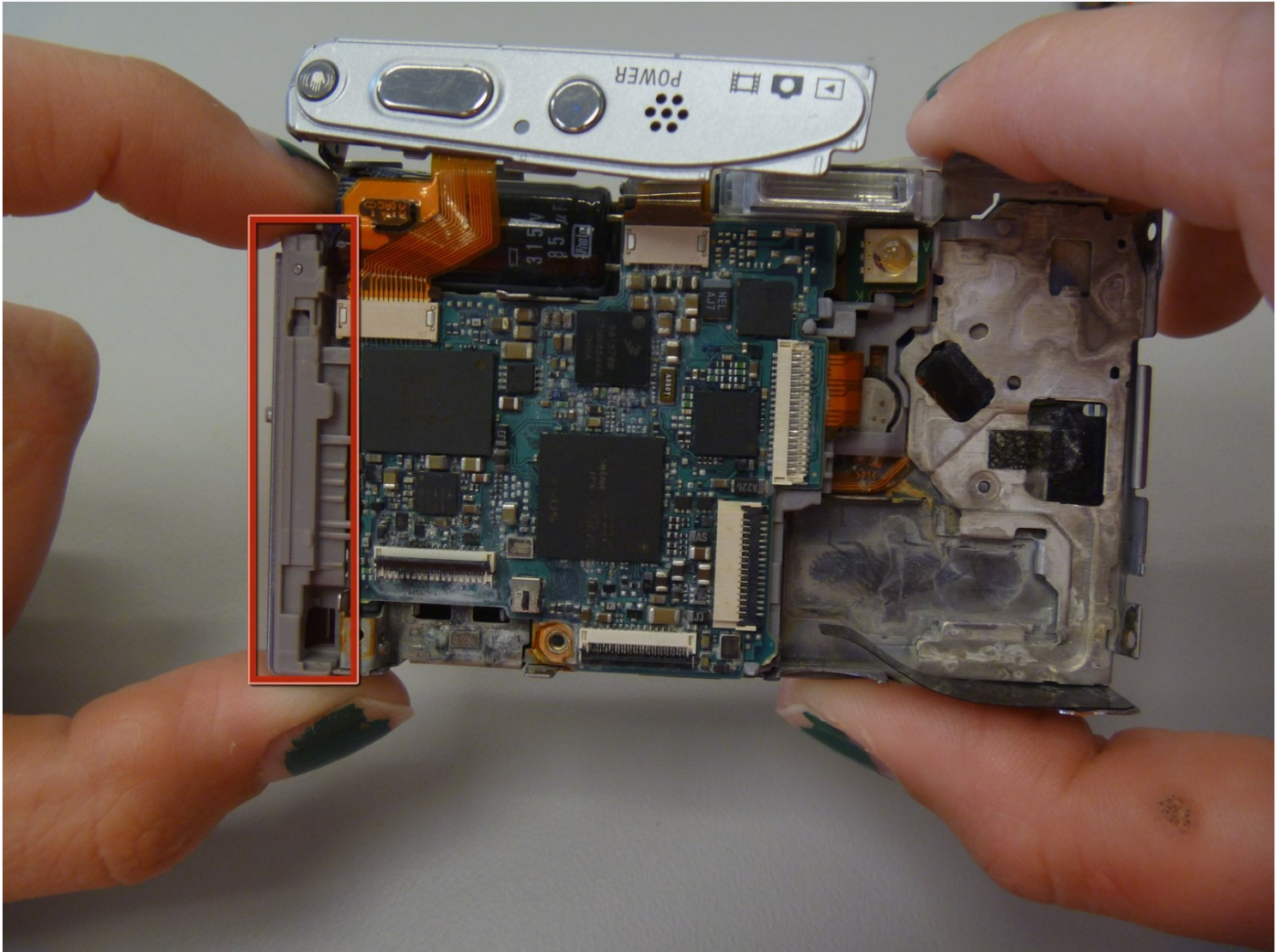




Sony Cyber-shot DSC-T9 Motherboard Replacement

This guide will allow the user to access the...

Written By: Stephannie Allen



INTRODUCTION

This guide will allow the user to access the motherboard for installation, replacement, or removal.

TOOLS:

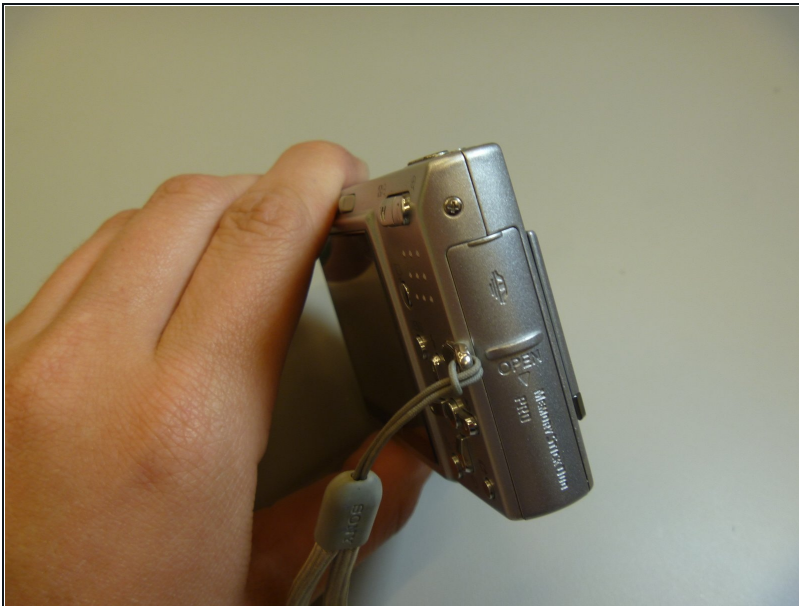
[Phillips #00 Screwdriver](#) (1)

[Spudger](#) (1)

[Tweezers](#) (1)

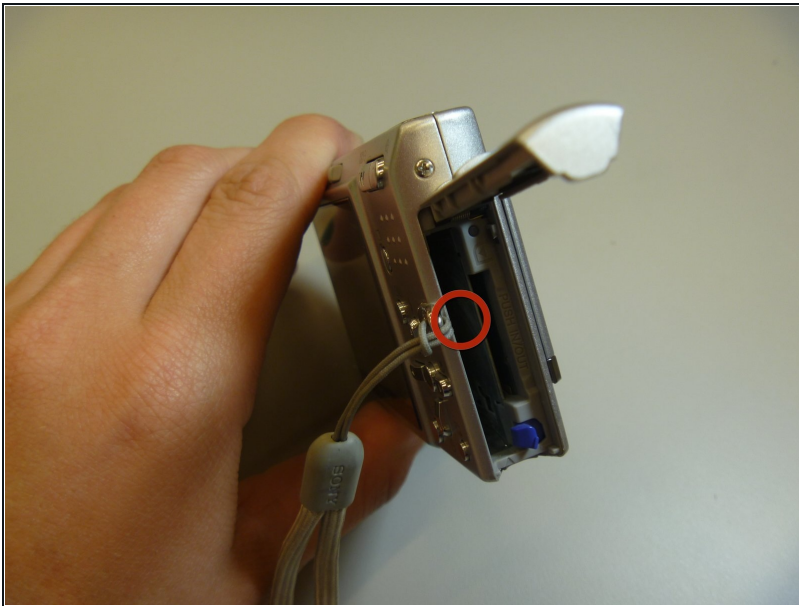
[iFixit Opening Tool](#) (1)

Step 1 — Battery



- The battery cover is located on the right side of the camera.
- Slide the cover to expose the battery.

Step 2



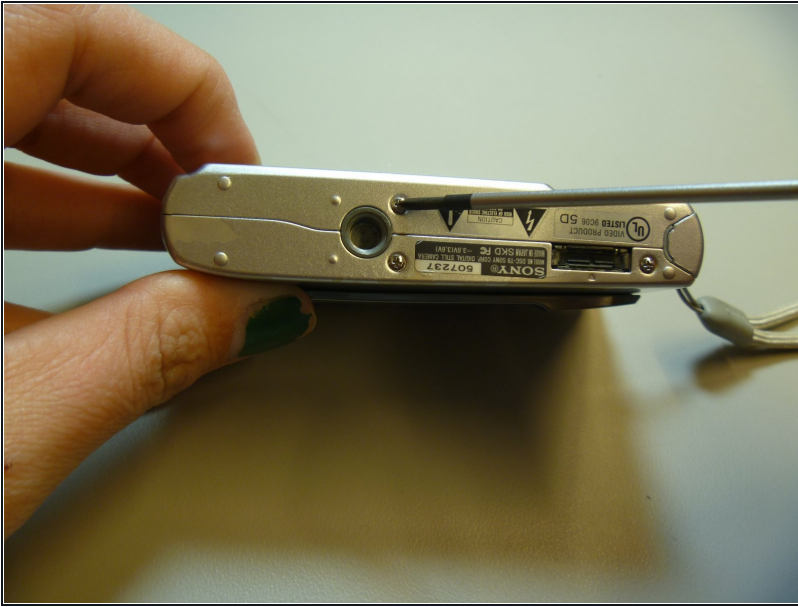
- Ensure that the battery lines up properly with the slot in the camera.
- Slide battery in.
- Slide cover closed.
- ⓘ Battery not shown

Step 3 — Front Cover



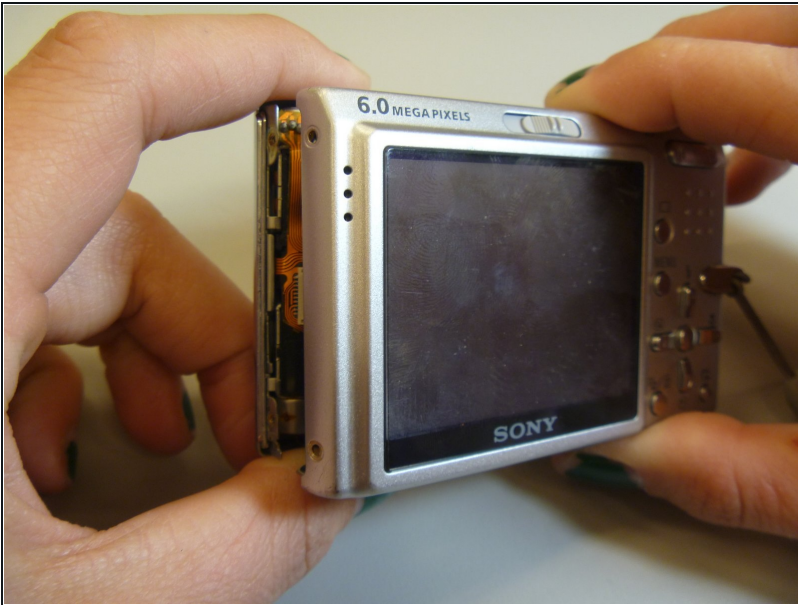
- Remove screws from outside of camera. There are 6 screws total.
- 3 screws on underside.
- 1 screw on right side, near battery cover.
- 2 screws on left side.

Step 4



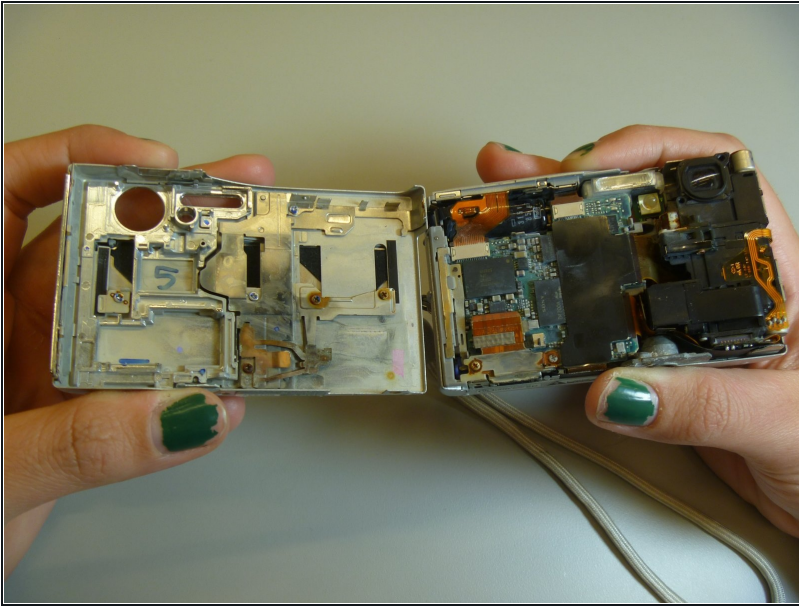
- Use screwdriver to remove screws.

Step 5



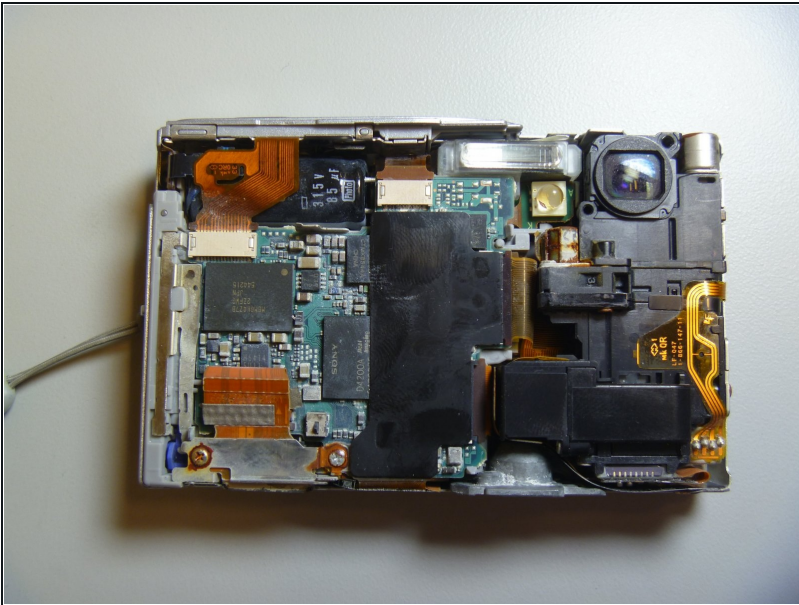
- Gently pull the front cover off of the main camera.
- All of the inner parts of the camera are attached to the back screen.

Step 6



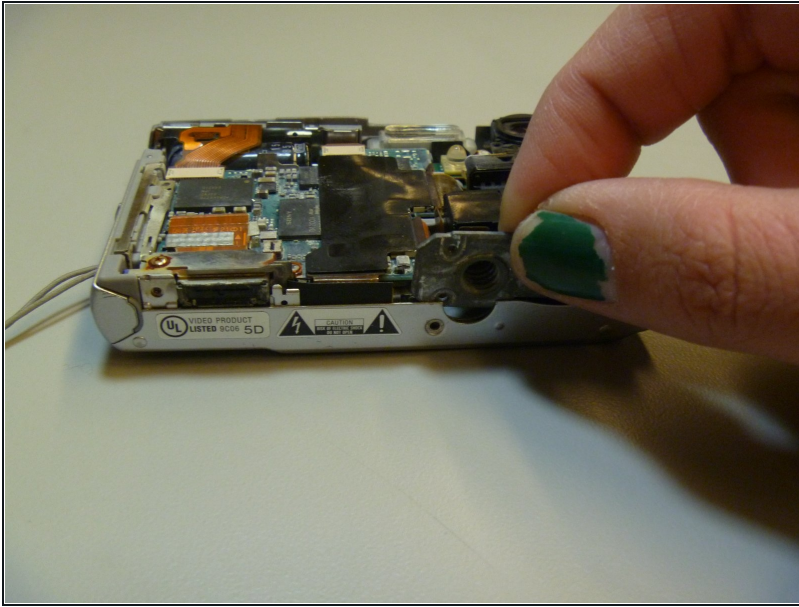
- The front cover is now removed from the camera and the internal hardware is now exposed.

Step 7 — Back Cover



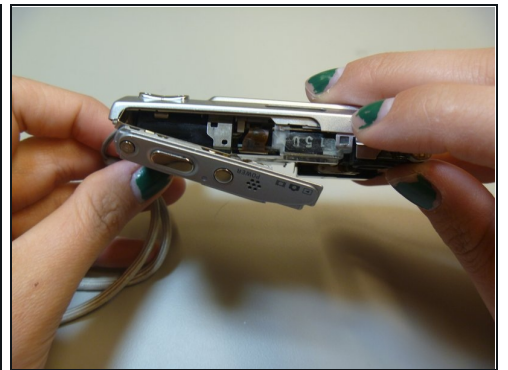
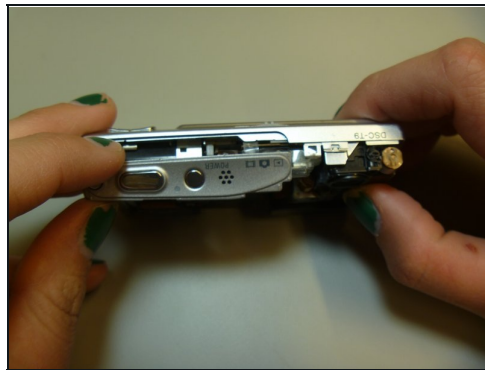
- This is the camera without the front cover.

Step 8



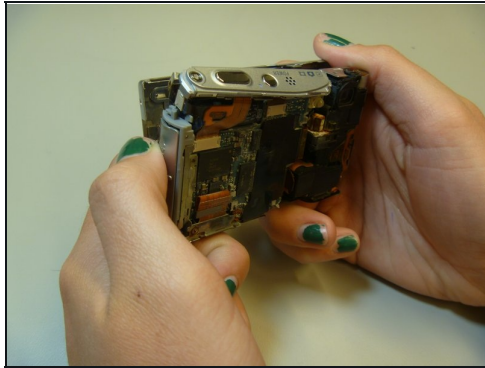
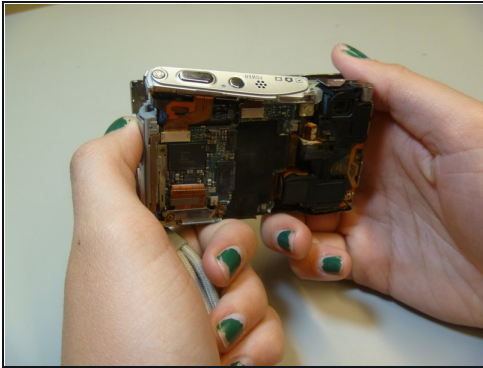
- Remove tripod piece located at the bottom of the camera. This piece should slide out with ease.

Step 9



- Slide open the top panel. This is located on the top of the camera, where the power button and shutter button are.

Step 10



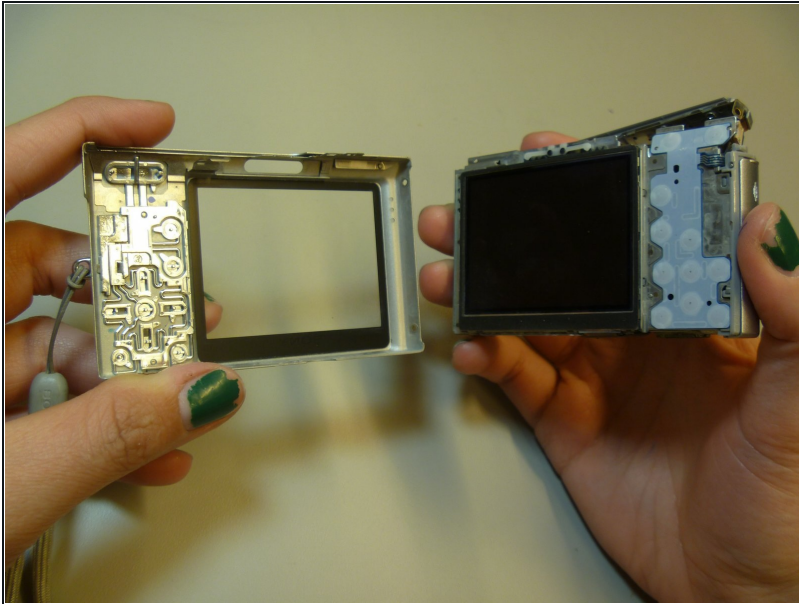
- Pull apart the inner hardware from the back case by prying on the left side.

Step 11



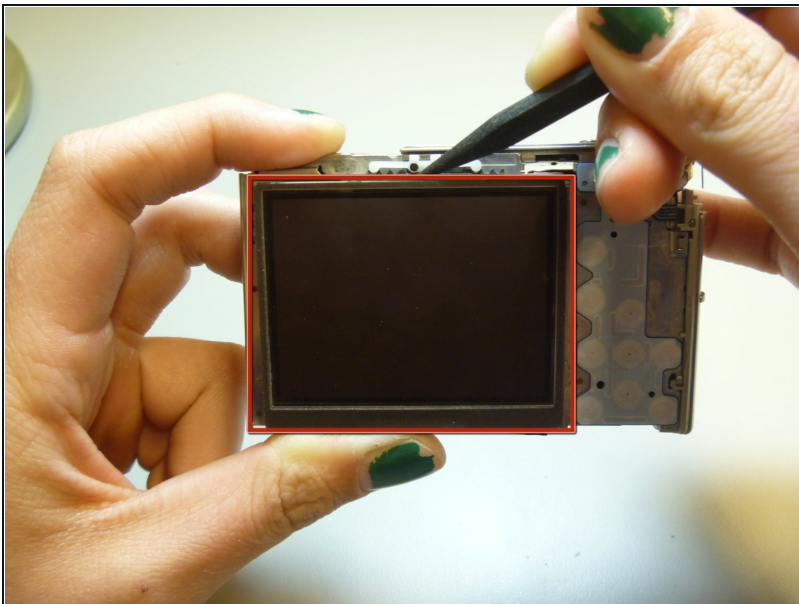
- Remove the back cover.

Step 12



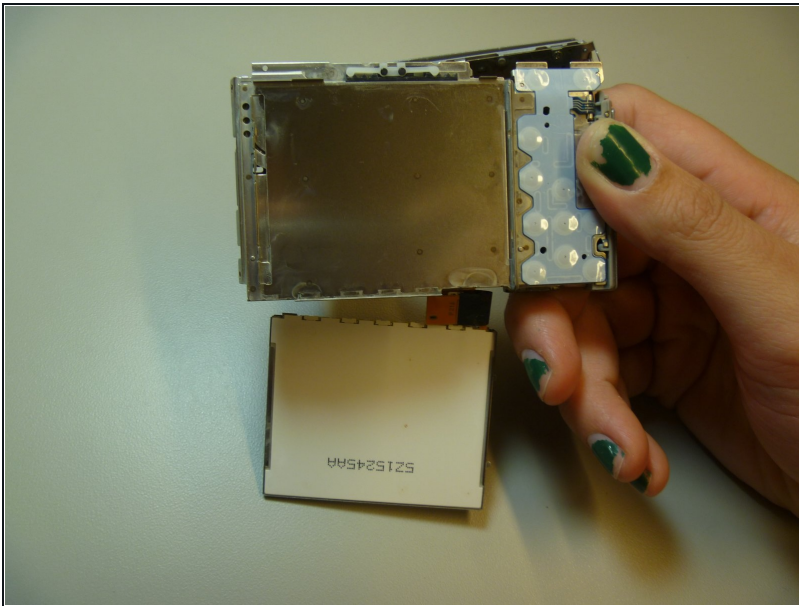
- The back cover is now removed from the internal hardware.

Step 13 — LCD



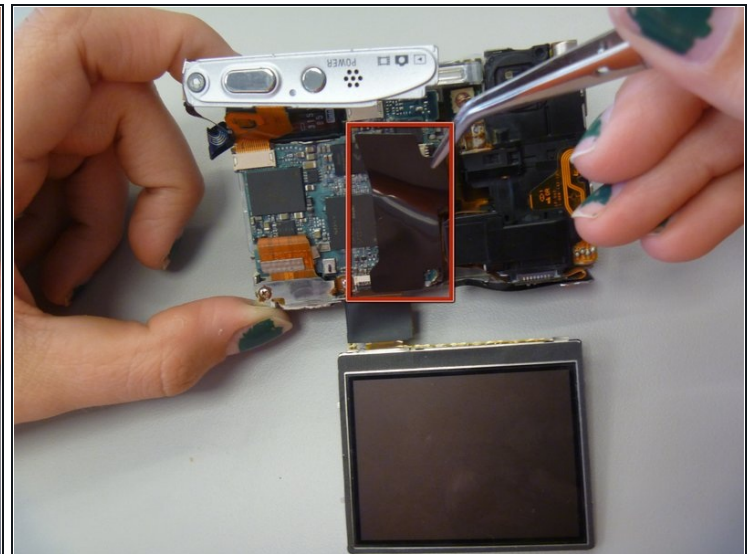
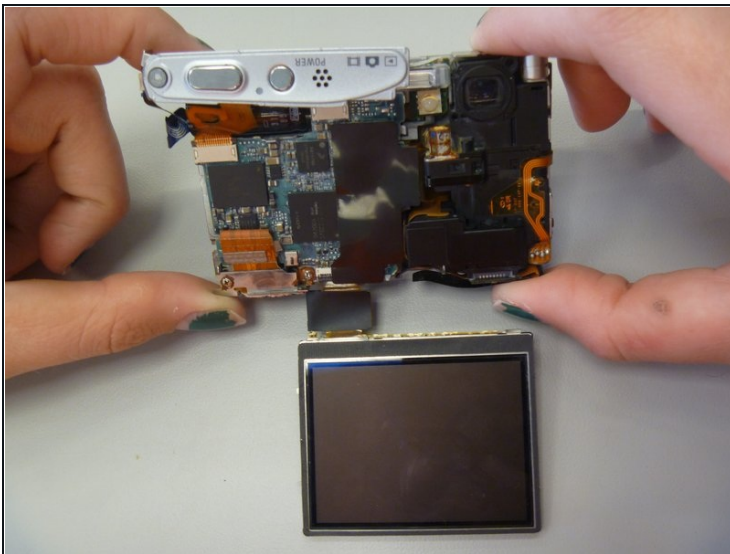
- Use the spudger to pry the LCD from the camera.

Step 14



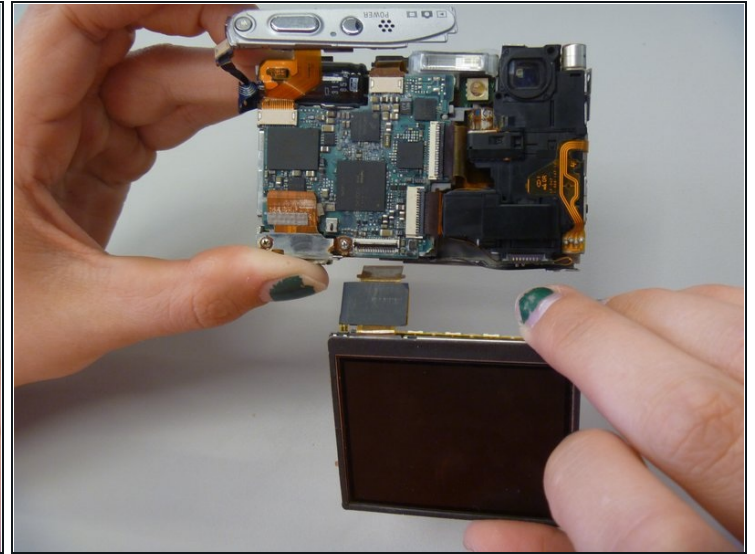
- The LCD is now removed from the camera, although attached by a ribbon at the bottom of the camera.

Step 15



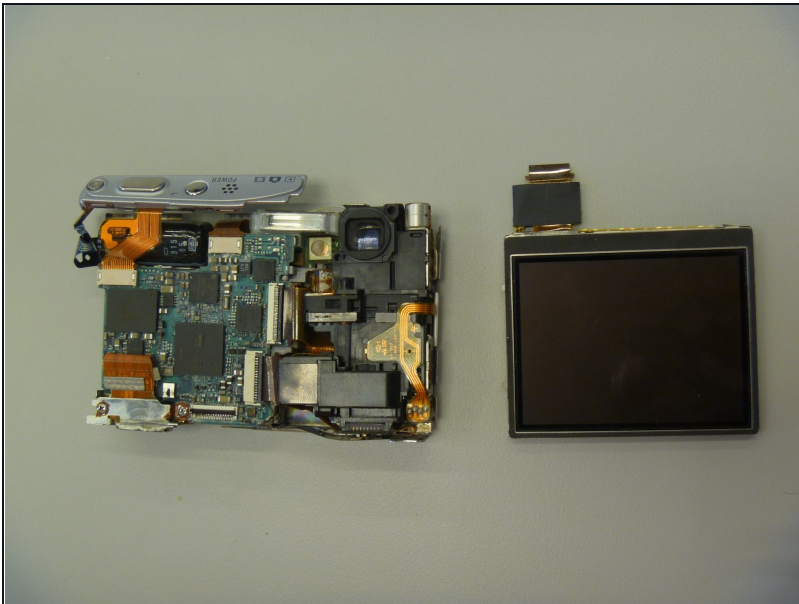
- Flip camera to other side.
- Use [tweezers](#) to peel off black sticker, located in middle of the motherboard.

Step 16



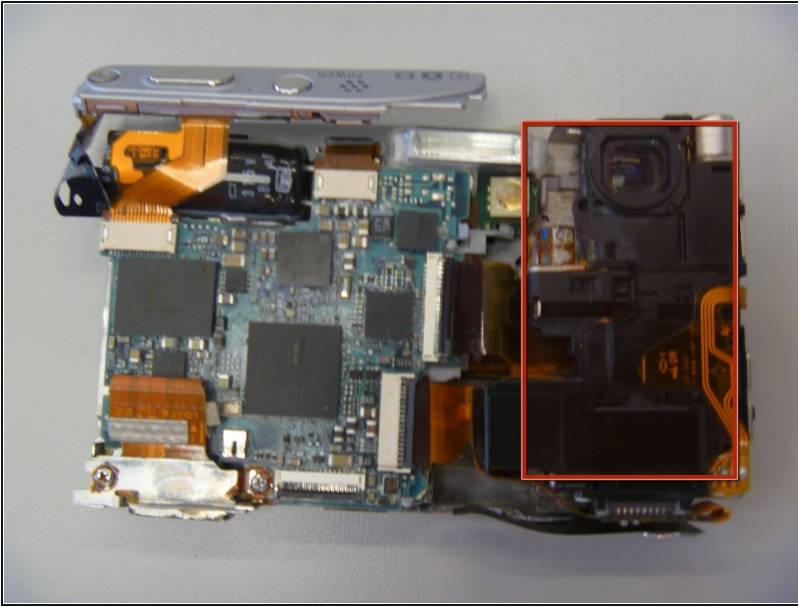
- Use pry stick to pop out LCD connector ribbon, also called the ZIF connector.

Step 17



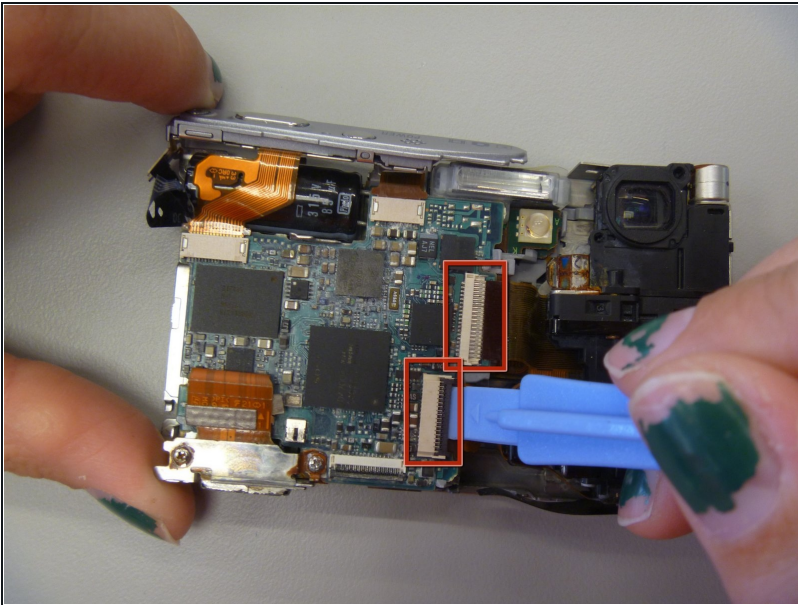
- The LCD is now removed from the camera.

Step 18 — CCD Module



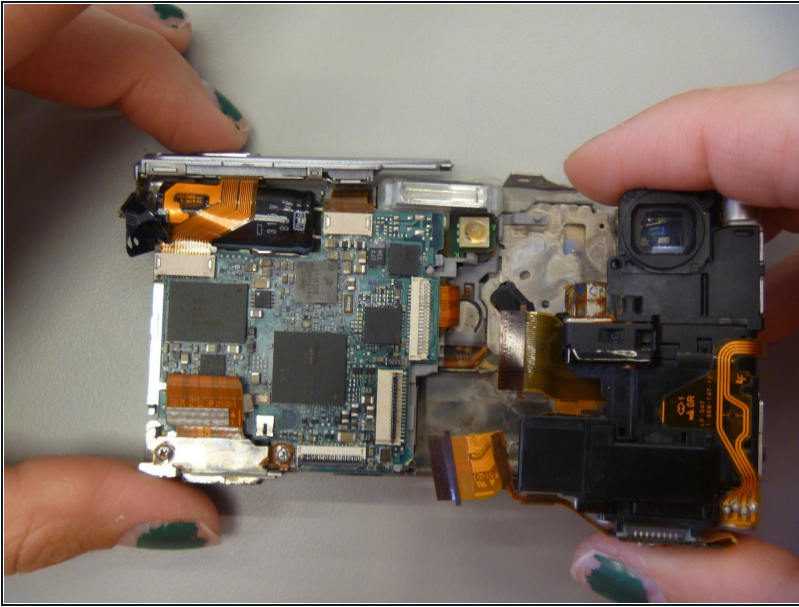
- This is the CCD module.

Step 19



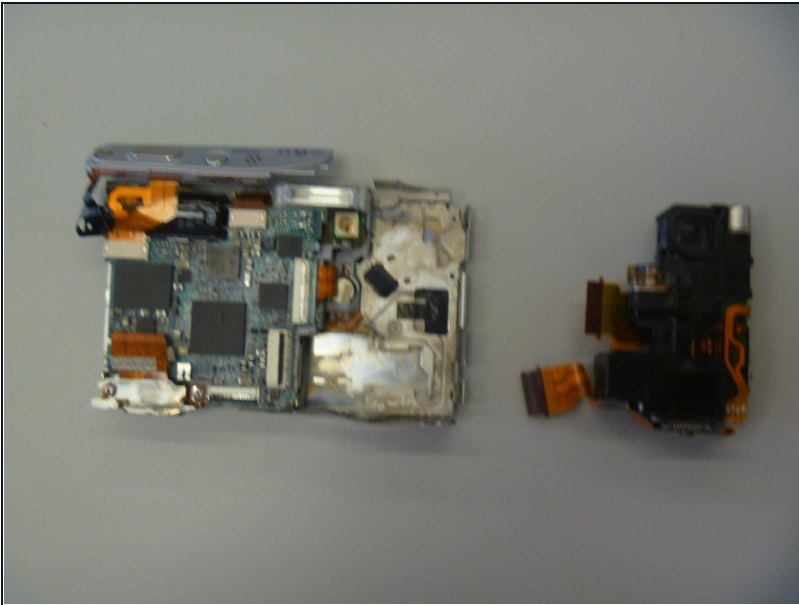
- Use plastic opening tool pop open the two ribbons attaching to the CCD module.
- These are the two ribbons.

Step 20



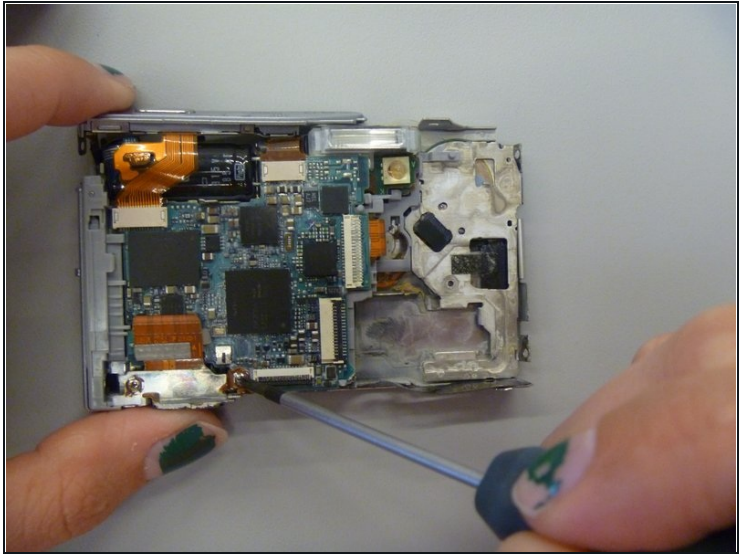
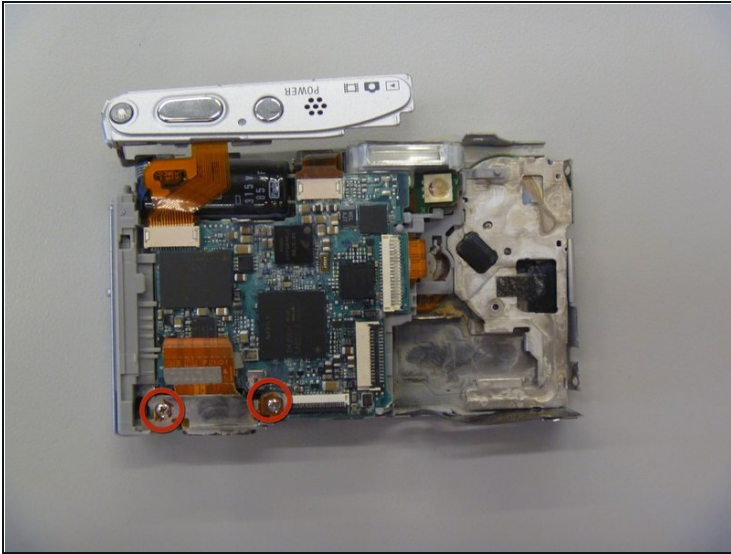
- Remove CCD module.
 - ① You may have to tug on the ribbons to remove the CCD module.

Step 21



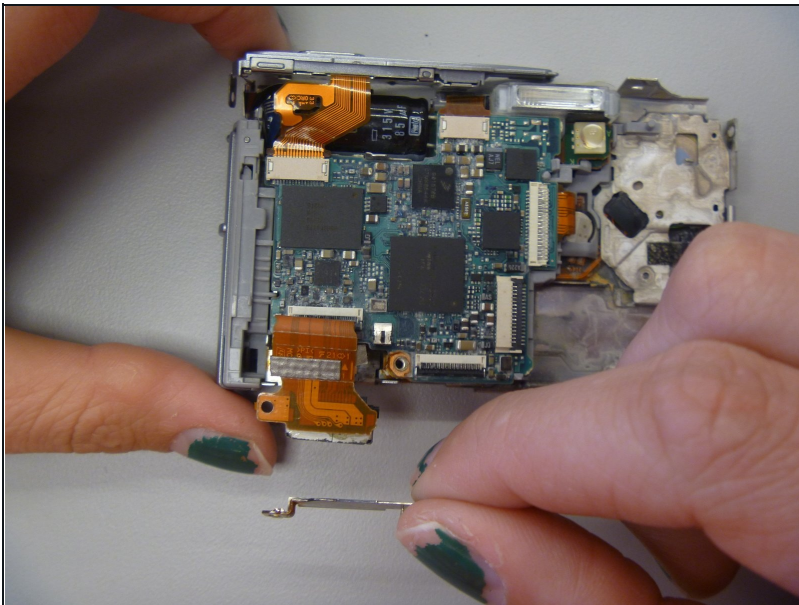
- The CCD module is now removed from the camera.

Step 22 — AV Port



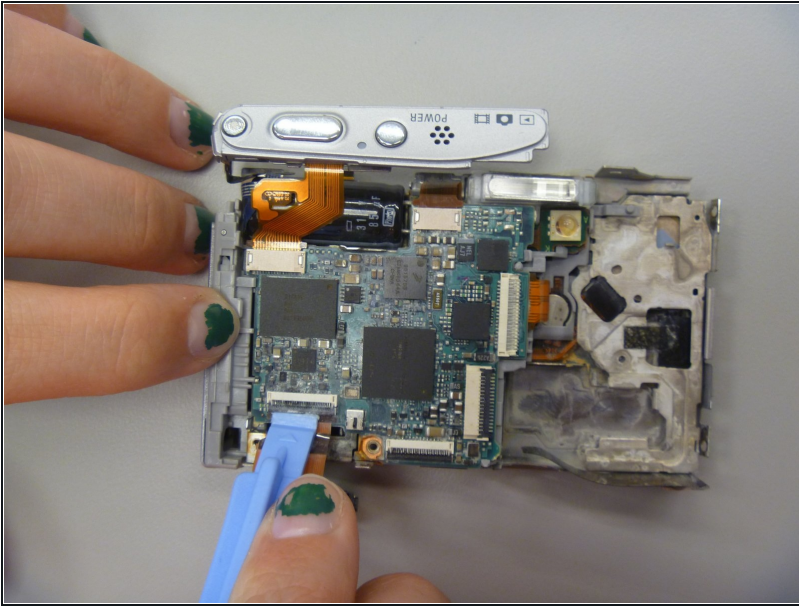
- These two screws hold in the AV port.
- Use Phillips screwdriver to remove screws.

Step 23



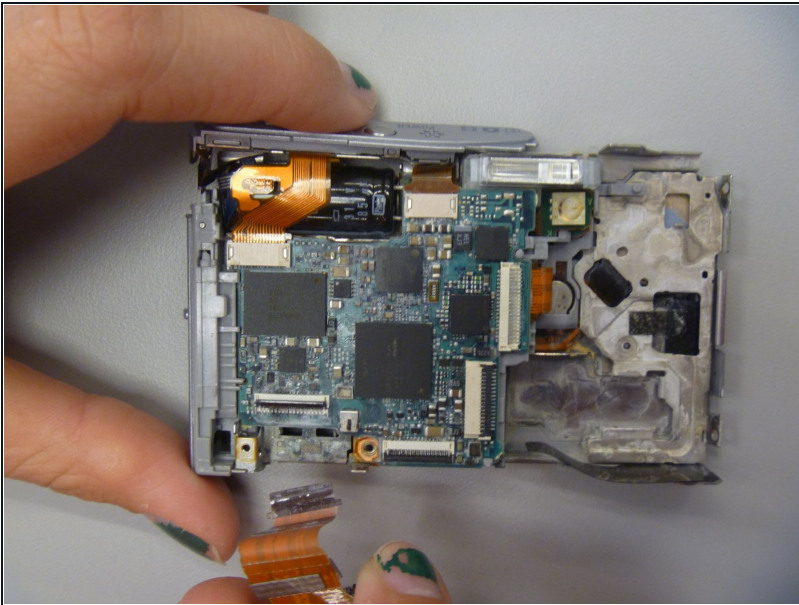
- Remove metal screw plate.

Step 24



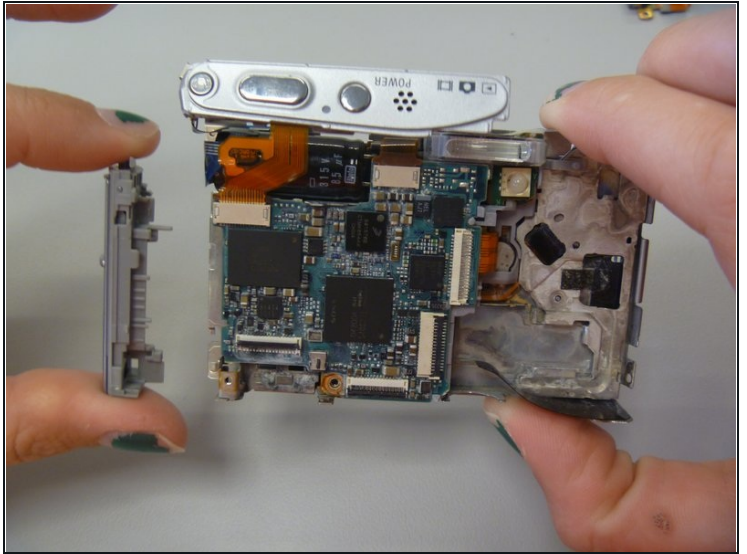
- Use pry stick to pop off ribbon.

Step 25



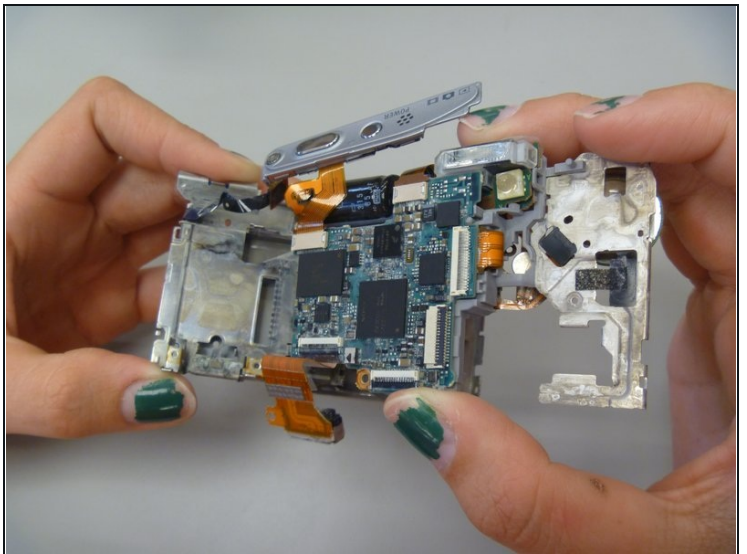
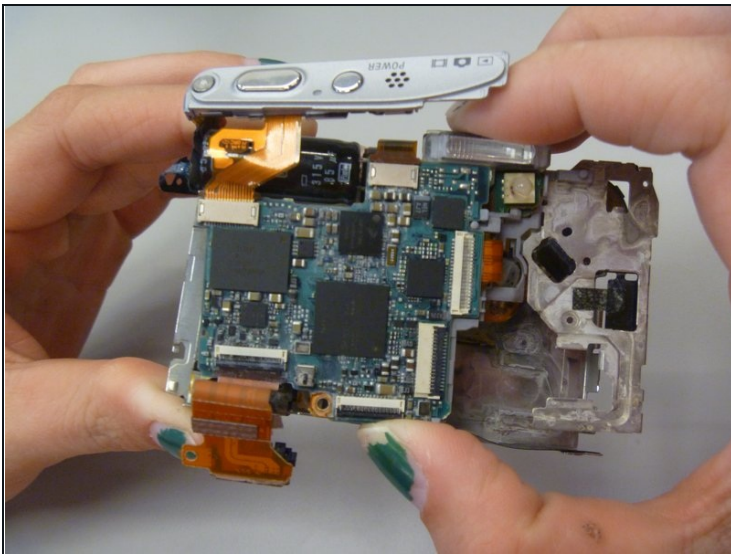
- Remove AV port from camera.

Step 26 — Motherboard



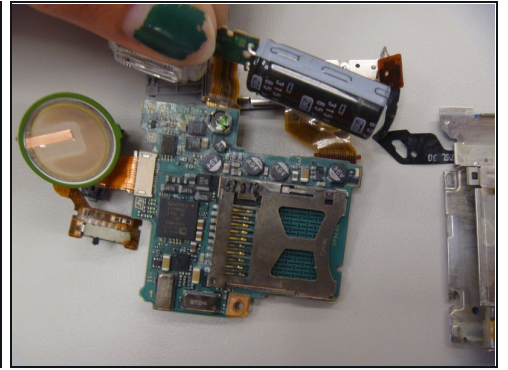
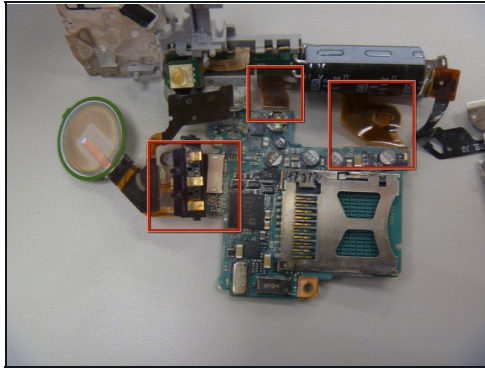
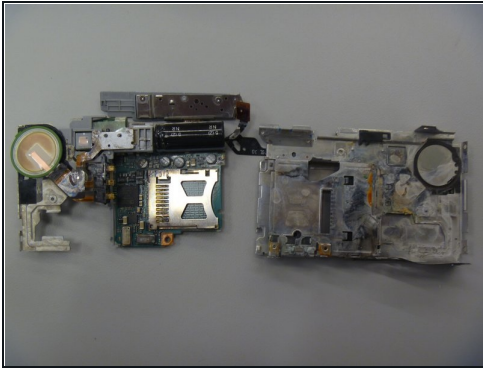
- The battery cover is located here.
- Pull away from camera to remove.

Step 27



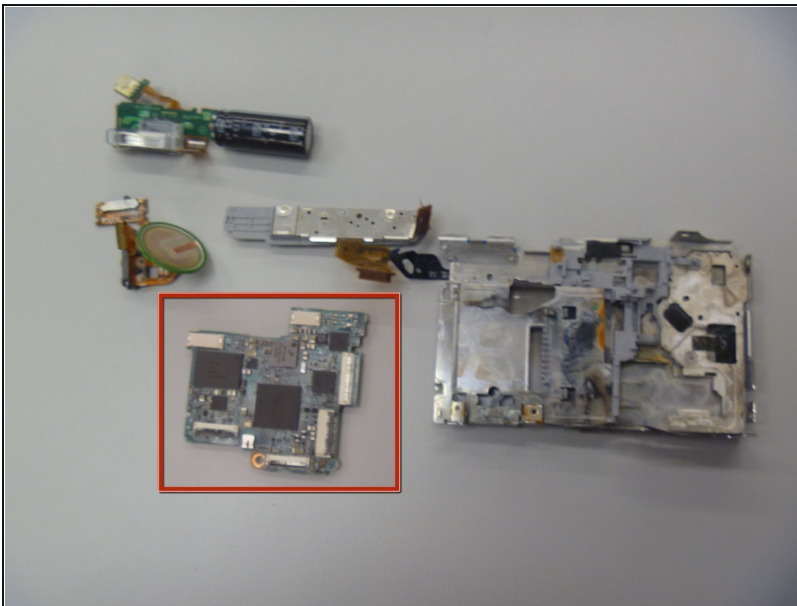
- Grip on the top and bottom.
- Pull up and out to remove motherboard and attached parts.

Step 28



- Flip motherboard parts to position shown.
- There are three ribbons still attached to the motherboard.
- Pull these three ribbons to remove remaining parts from motherboard.

Step 29



- The motherboard is now removed from the camera.

To reassemble your device, follow these instructions in reverse order.