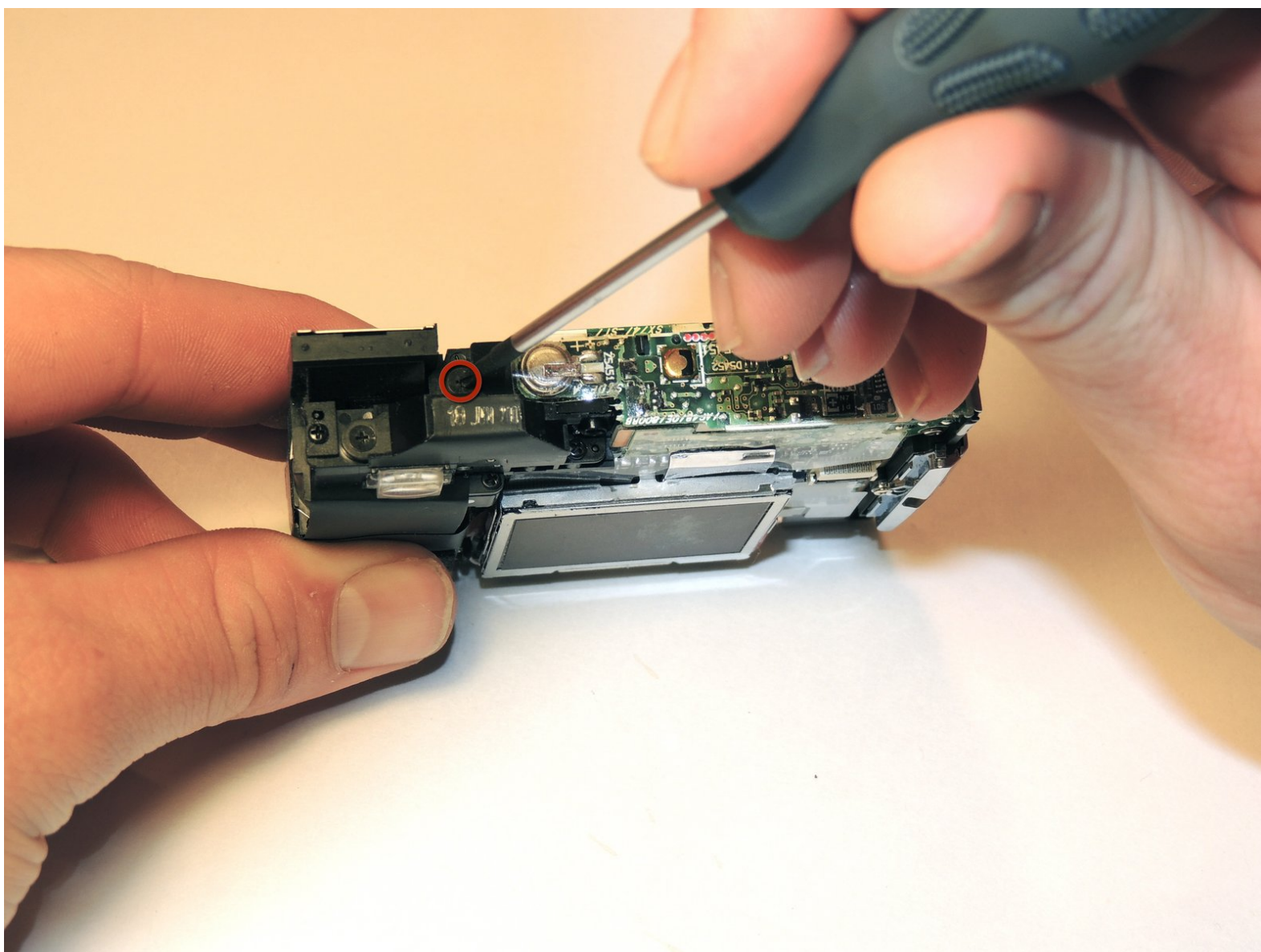




# Minolta Dimage Xt Flashbulb and Housing Replacement

The flashbulb and housing are found as one whole component to the camera. A replacement will just be a whole component for this camera.

Written By: Keith Sechrist



---

## INTRODUCTION

The flashbulb and casing are one component located at the top of the camera. A replacement will be the whole component and not each of the parts separately.



### TOOLS:

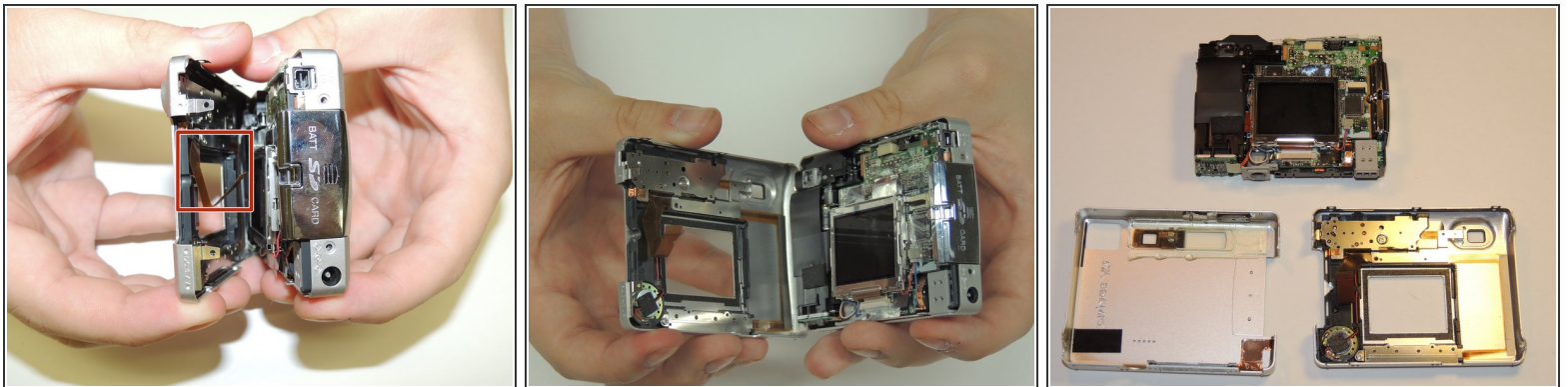
- [Phillips #00 Screwdriver](#) (1)
-

## Step 1 — Casing



- Locate and remove the silver screws on each side of the camera.
- ⓘ Use the Phillips #00 Screwdriver to unscrew all 2.0mm (4 instances) and 4.0mm (2 instances) screws.

## Step 2

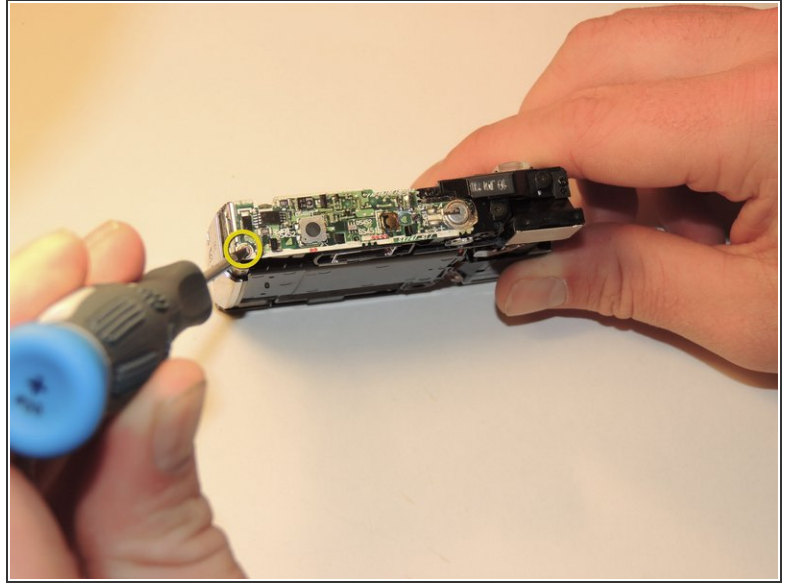
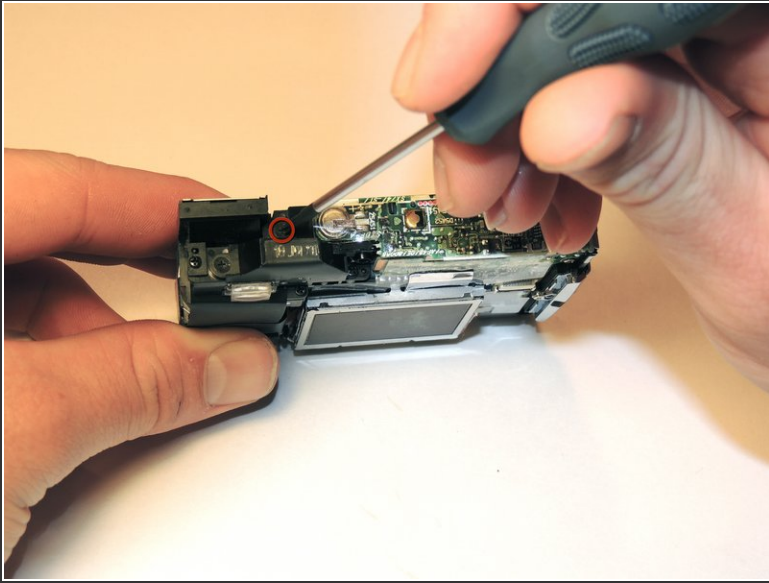


- Then, carefully pry apart the front and back outer casing away from the internal components.

⚠ Be aware of the ribbon wire that will disconnect when the casing is detached.

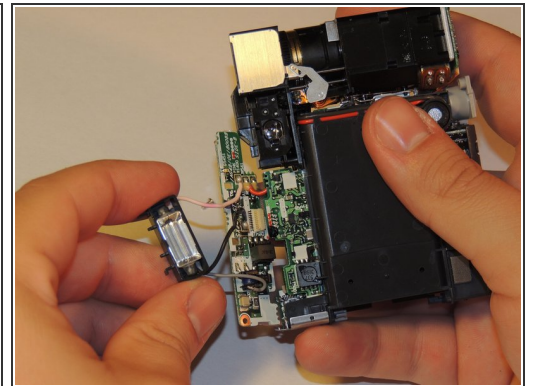
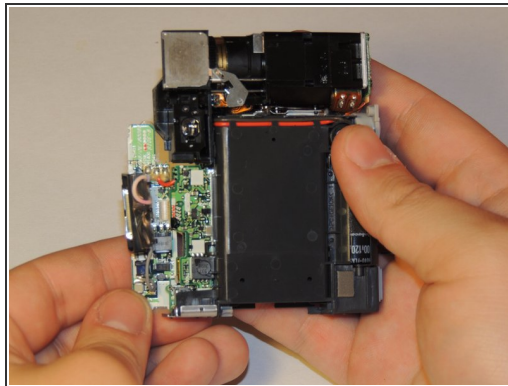
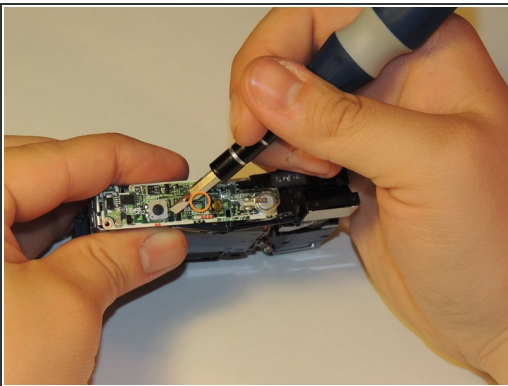


### Step 3 — Flashbulb and Housing



- Remove 2mm screws connecting the flash housing to the main components of the camera.
- ⓘ Use a Philips #00 screwdriver to remove the black 2.0mm (4 instances) screws .

### Step 4



- Use the spudger to push the black plastic hooks through the circuit board to release the flash housing.
- Once the screws have been removed, pull the circuit board away from the body of the camera.
- ⓘ Wires will keep it from completely detaching.
- Pull the housing away from the circuit board.

To reassemble device, follow steps in reverse order. This will require the reattachment of wires from the camera to the flashbulb casing.