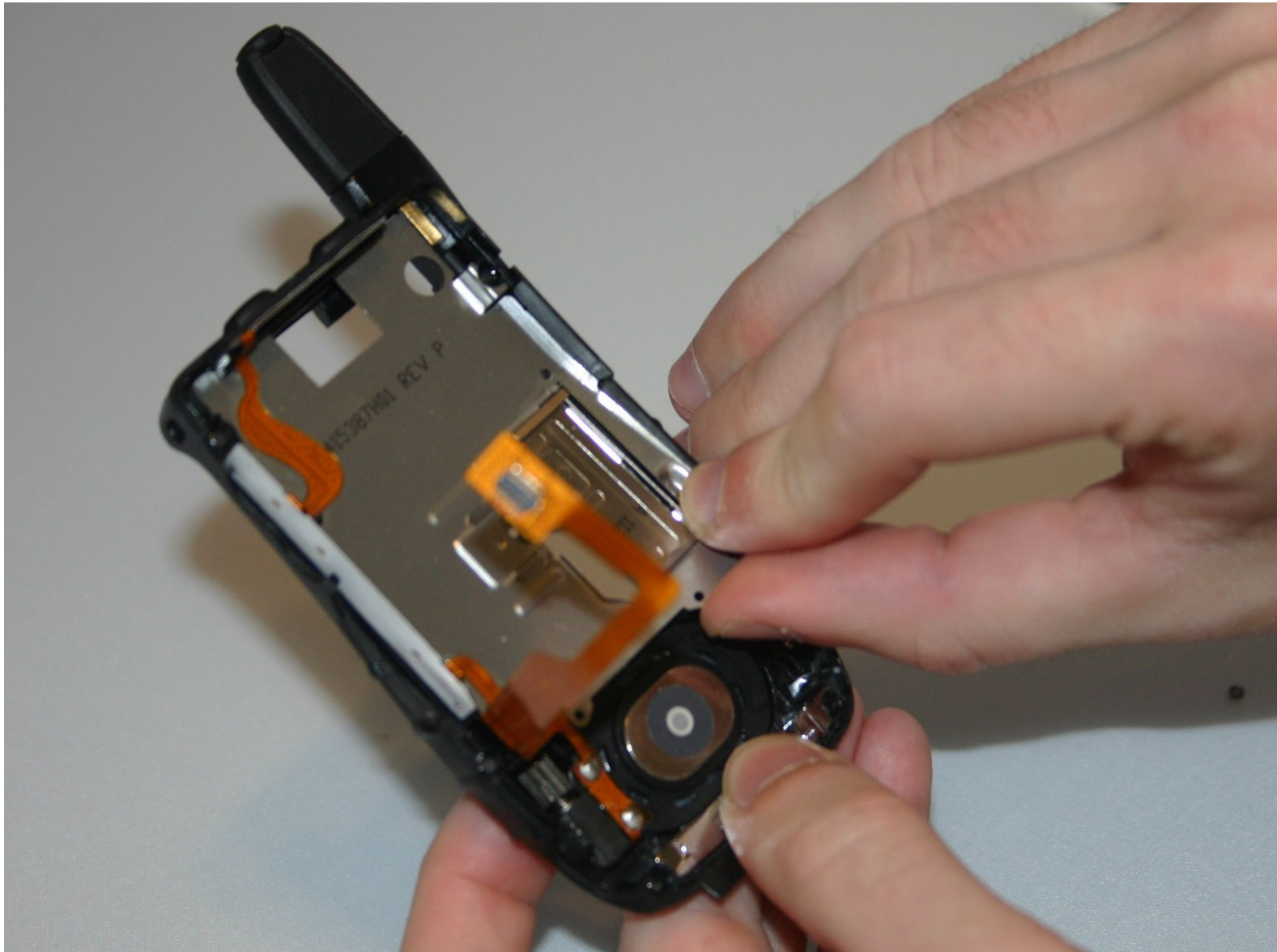




# Motorola i560 Metal Support Plate Replacement

This guide will explain how to remove the metal support plate on the back of the Motorola i560

Written By: Haley S



---

## INTRODUCTION

The metal support plate must be removed in order to get to the phone speaker for removal.

---



### TOOLS:

- [T6 Torx Screwdriver](#) (1)
-

## Step 1 — Battery



- Place thumb on the rubber tab on the lower back of the phone.
- Push away from the phone to release back panel.

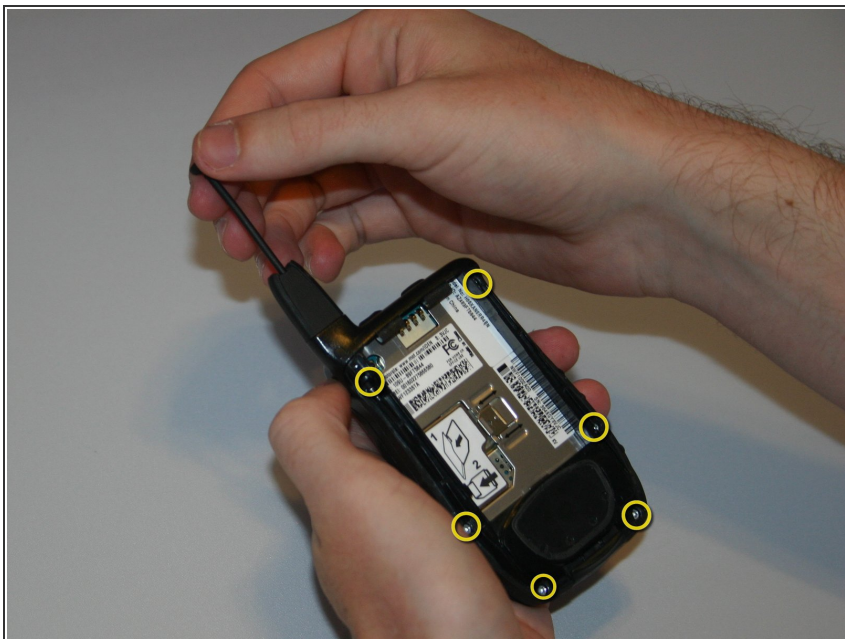
## Step 2



- Lift the back panel of the phone to expose battery (not shown here).



## Step 3 — Side Volume Button



- Pull antenna up, away from the phone, to reveal two of six screws.

## Step 4



- Unscrew all six 5.4 mm screws on the back side of the phone using the T-6 screwdriver bit.

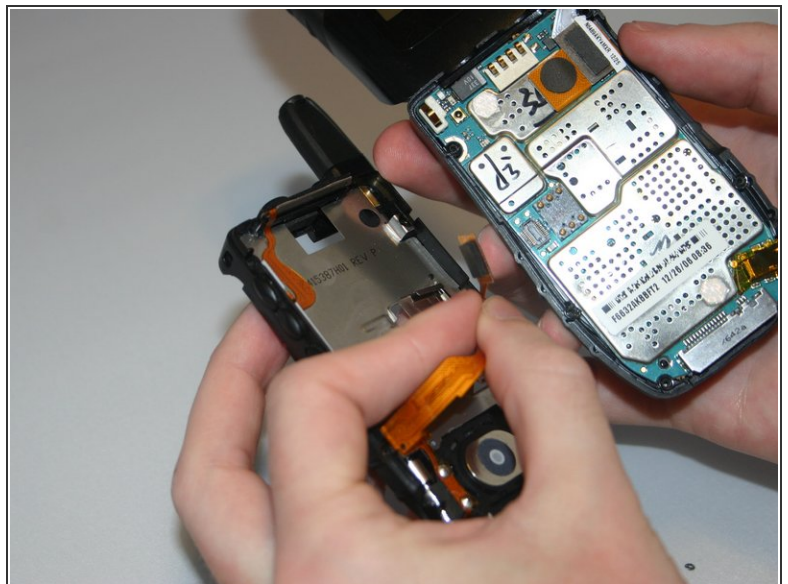
## Step 5



- Gently separate the front and back sides of the phone.

⚠ Be careful not to break or bend the ribbon cables.

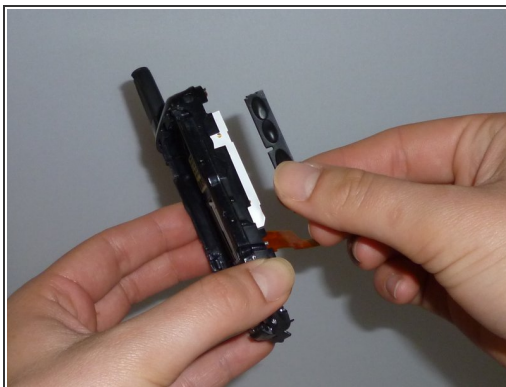
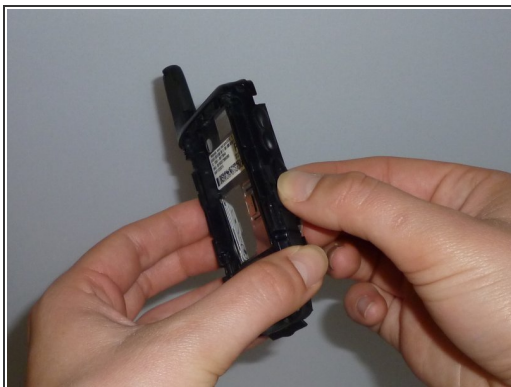
## Step 6



- Detach the first ribbon cable by unplugging it from the logic board.

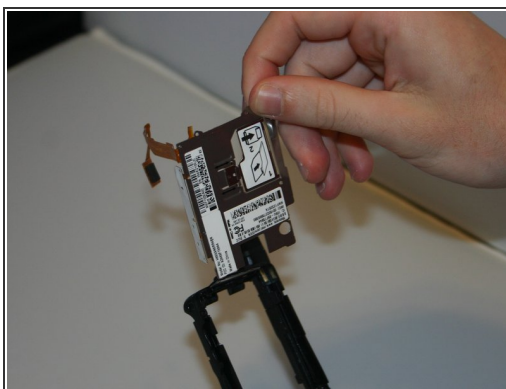


## Step 7



- Gently remove the side button by pulling the buttons away from the phone.

## Step 8 — Metal Support Plate



- Grab the tab at the bottom of the metal plate, and pull to remove the plate from the phone.

To reassemble your device, follow these instructions in reverse order.