



Huawei Watch GT Battery Replacement

How to replace a worn-out or dead battery in your Huawei Watch GT.

Written By: Dominik Schnabelrauch



INTRODUCTION

Use this guide to replace a worn-out or dead battery in your Huawei Watch GT.

For your safety, discharge your battery below 25% before disassembling your Huawei Watch GT. This reduces the risk of a dangerous thermal event if the battery is accidentally damaged during the repair.

Note: If your battery is swollen, [take appropriate precautions](#).

You'll need replacement adhesive to reattach components when reassembling the device.



TOOLS:

- [T3 Torx Screwdriver](#) (1)
- [iFixit Opening Picks set of 6](#) (1)
- [Tweezers](#) (1)
- [Spudger](#) (1)
- [iOpener](#) (1)
- [Phillips #00 Screwdriver](#) (1)



PARTS:

- [Huawei Watch GT Replacement Battery](#) (1)

Step 1 — How to open the Huawei Watch GT



- Before you begin, take your watch off the charger and power it down.
- Remove the watch band.

Step 2



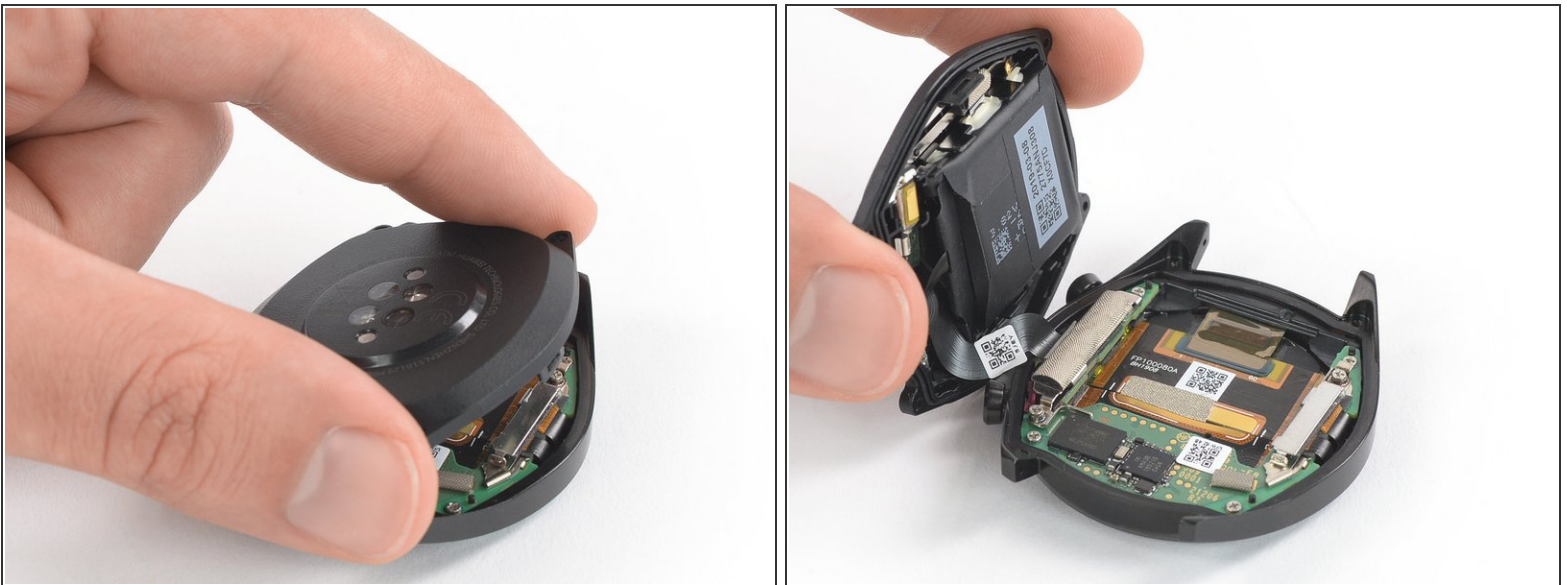
- Remove the four Torx T3 screws (3.65 mm length).

Step 3



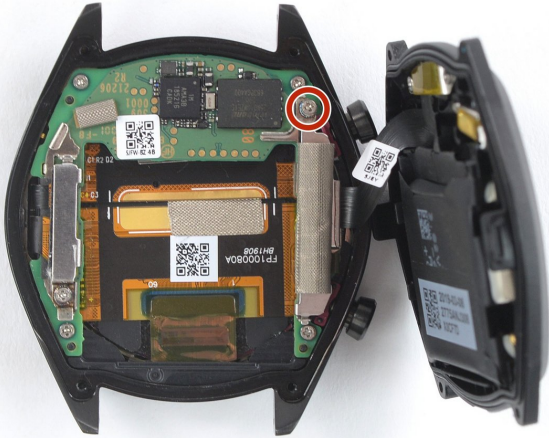
- Insert an opening pick into the notch at the top edge of the back cover.
 - ⚠ Do not insert the opening pick deeper than 1 cm (1/3rd of an inch) to avoid damage to other components.
- Use the opening pick to pry up the back cover of the Huawei Watch GT.
 - ⚠ Do not remove the back cover assembly all the way yet—it's still connected to the mainboard.

Step 4



- Carefully fold the back cover assembly to the side of the two watch crowns.

Step 5 — Battery



i It's not required to separate the front and back cover assemblies of the Huawei Watch GT to remove the battery. However, it's an easy procedure and we recommend doing so to make the battery removal easier. In case you feel confident without separating the parts, you can [jump to step 8](#).

- Remove the Phillips #00 screw (2.9 mm length).

Step 6



- Use a pair of tweezers to remove the metal shield which covers the flex connector of the distribution cable.

Step 7



- Use a spudger to pry up and disconnect the distribution cable connector.

Step 8



- Remove the two Phillips #00 screws (2.6 mm length).

Step 9



- Use a pair of tweezers to remove the metal shield which secures the battery connector.

Step 10



- Use a spudger to pry up and disconnect the battery flex connector.

Step 11




- Apply a [heated iOpener](#) to the rear side of the back cover assembly to loosen the adhesive which is holding the battery in place. Apply the iOpener for at least two minutes.

Step 12



- Insert a spudger between the top edge of the battery and the back cover.
- Use the spudger to pry the battery out of its recess.
- Remove the battery.

 Do not reinstall a damaged or deformed battery, as doing so is a potential safety hazard.

To reassemble your Huawei Watch GT follow these instructions in reverse.

For optimal performance, calibrate your newly installed battery: Charge it to 100% and keep charging it for at least 2 more hours. Then use your device until it shuts off due to low battery. Finally, charge it uninterrupted to 100%.

Take your e-waste to an [R2 or e-Stewards certified recycler](#).

Repair didn't go as planned? Check out our [Answers community](#) for troubleshooting help.