



# Nikon D500 Back Panel Removal

This is the steps of removal of the rear panel...

Written By: Wolphin



# INTRODUCTION

This is the steps of removal of the rear panel from the camera, exposing the main board.

---

## TOOLS:

[Phillips #00 Screwdriver](#) (1)

[Prying and Opening Tool Assortment](#) (1)

---

### Step 1 — Remove Memory Card(s) and Battery



- Remove the Memory Card(s) from the camera
- Remove the Battery from the Camera, and close the battery compartment cover

## Step 2 — Remove 2 exposed screws



- Remove the 2 screws beside the memory slots, then close the cover.
- Note: make sure to remove the memory cards first!

## Step 3 — Remove 2 screws under grip



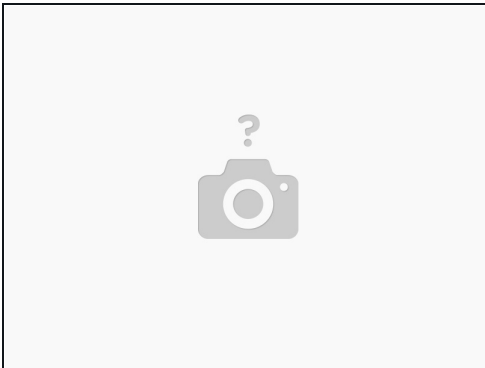
- Remove the 2 screws under the rubber grip part by peeling back the rubber grip
- Try not to damage the double sided adhesive under the rubber.

## Step 4 — Remove 2 screws under rear grip



- Remove the 2 screws under the rubber pad marked in red.
- Try not to damage the double-sided adhesive under the rubber.
- Note: There is a 3rd screw under the flap, which holds the back to the top (marked in yellow). If needing to remove the back panel not just the memory cover flap, it can be removed at this time as well.

## Step 5 — Lift out panel



- Lift out the assembly panel, it should come free without much force.
- May open the panel to release it.

## Step 6 — Remove top screw



- Remove the screw above the viewfinder

## Step 7 — Remove the bottom panel plate



- Remove the 4 screws holding the plate to the bottom.
- Remove the bottom plate

## Step 8 — Remove screws from the bottom



- Remove the 4 screws (1 was under the plate removed under the last step)

## Step 9 — Remove Screw under grip



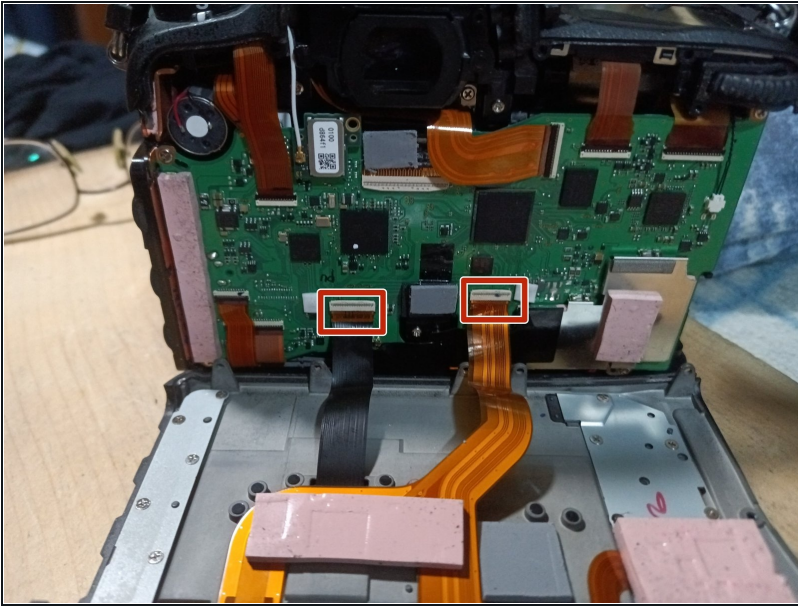
- Remove the screw under the grip, if it has not been removed doing a previous step

## Step 10 — Remove Screw on Left



- Remove the exposed screw on the Left side

## Step 11 — Carefully remove the back assembly



- Carefully pull the back plate off the camera
- There are 2 ribbon cables that need to be disconnected from the main board to free the rear panel from the camera.
- To release the cables by flipping up the tap on the side away from the cable
- When reconnecting the cables, make sure the cables are fully seated before flipping the latch back down.
- The black cable goes to the LCD (on the tilt screen), the other one goes to the buttons.
- The LCD cable does have less slack, so is easier to release first, and reconnect last.

---

To reassemble your device, follow these instructions in reverse order.