

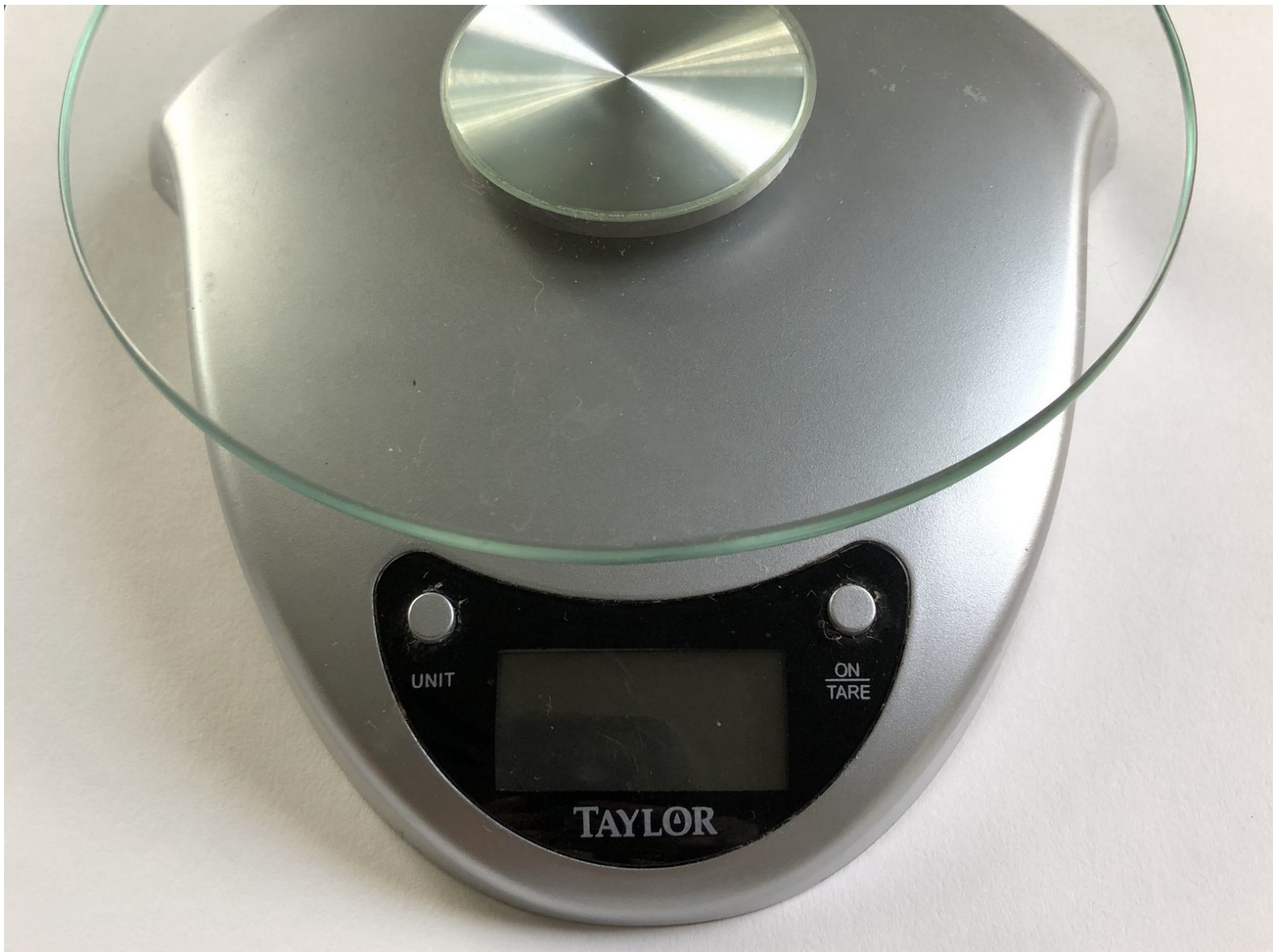


# Taylor Precision Product 3831S Kitchen Scale

## Battery Replacement

Replace the lithium battery in a Taylor Precision Product Kitchen Scale 3831S.

Written By: Arika Lewis



## INTRODUCTION

When your Taylor 3831S scale will not power on, it may be a simple fix and not that the Lithium battery is dead. Batteries need to be replaced periodically and this device will not work without one. This manual explains how to replace the CR2032 battery in the scale.



### TOOLS:

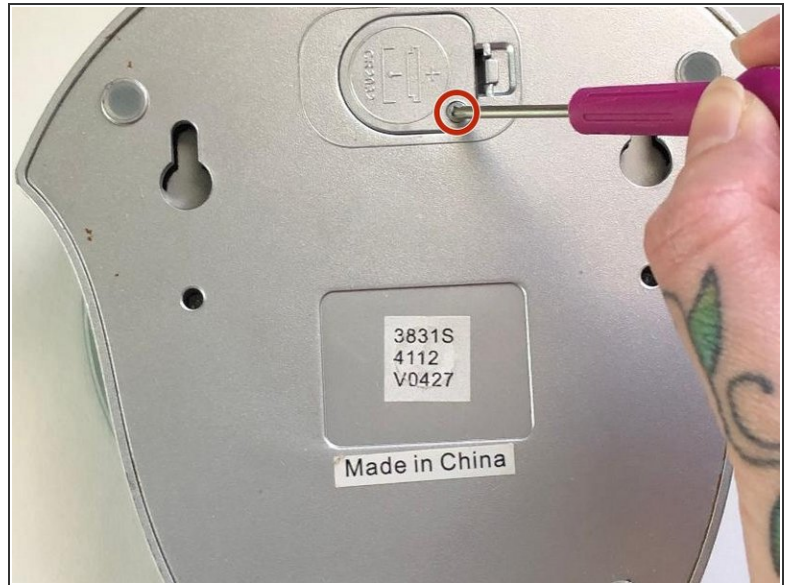
- [Phillips #00 Screwdriver](#) (1)



### PARTS:

- [CR2032 Lithium Battery](#) (1)

## Step 1 — Battery



- Grab your scale and flip it over to get started.
- Remove the small screw on the battery housing cover using the Phillips #00 screwdriver.

## Step 2



- Next, push the tab in and remove the battery covering.



### Step 3



- Carefully remove the dead battery.

### Step 4



- With the indented side facing the scale, secure the new battery in the battery housing.

## Step 5



- Once the battery is secured, replace the battery cover.

## Step 6



- Using the Phillips #00 screwdriver once again, replace the screw that secures the covering.

## Step 7



- Now power on the scale.