



Nest Thermostat E battery replacement

This guide will help you replacing the battery on Nest/Google Thermostat E

Written By: Forest



**TOOLS:**

- [Phillips #0 Screwdriver](#) (1)

**PARTS:**

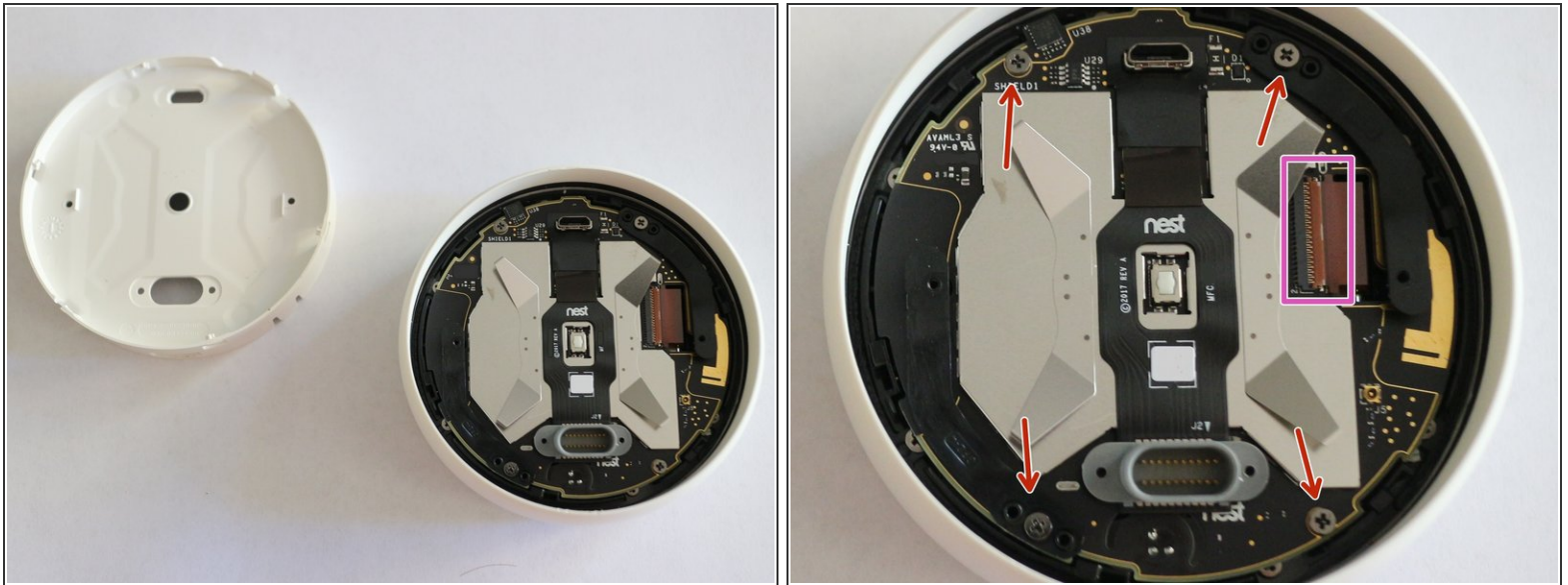
- [284449 battery](#) (1)

Step 1 — Battery



- Remove the thermostat from the baseplate
- Unscrew 4 screws on the back
- Picture by [@justlv](#)

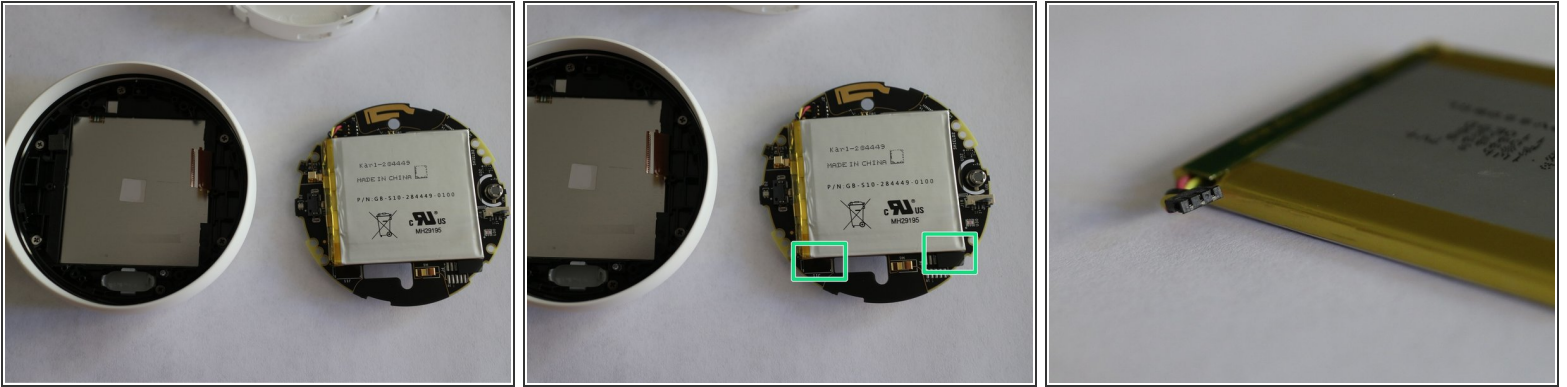
Step 2 — The Twist



⚠ To remove the cover turn it **counter clockwise** and pull. The cover is held by clips, but it should come off easily after the turn

- Detach the main PCB
 - Remove 4 more screws
 - Disconnect the display cable
- Pull the main PCB out of the device

Step 3 — Voila



- Battery type is 284449, meaning the battery is 2.8mm thick and 44mm by 49mm long/wide. Capacity 2.1Wh
 - ⓘ Those are tricky to find, but any 2.8mm battery should fit if doesn't exceed the size. For example a slightly shorter TL284443 fits perfectly
- YEEY!! We love pull tabs! Just pull them down to detach the battery
- Here is the battery connector. To disconnect the battery simply pull the connector "up"
- ⚠ The battery connector is very fragile, try to take extra care while disconnecting the old battery

To reassemble your device, follow these instructions in reverse order.