



Maquet Servo-U Expiratory Cassette Replacement

How to replace the expiratory cassette in Maquet Servo-U ventilator.

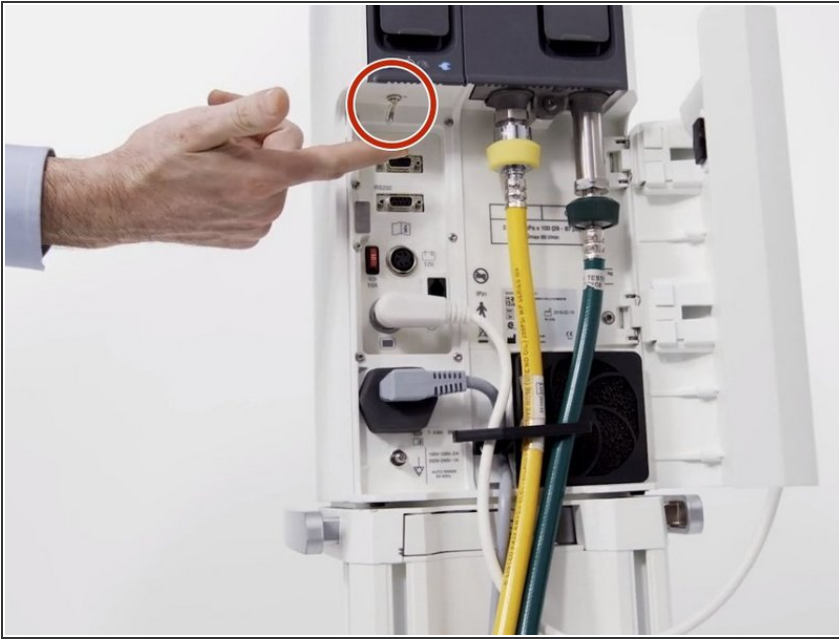
Written By: Cassie Arrestad



INTRODUCTION

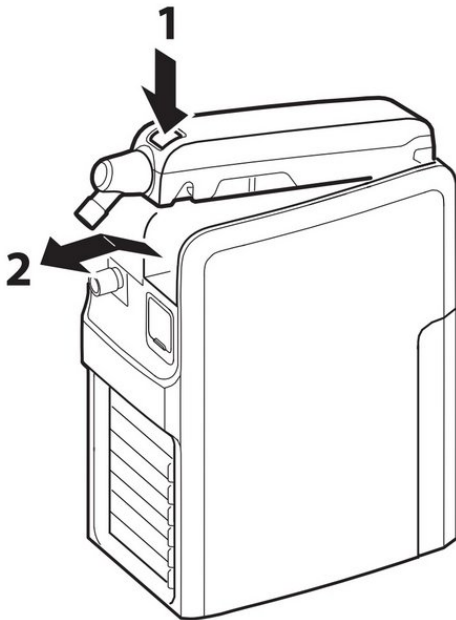
If you need to replace the expiratory cassette, you will not need any tools or special equipment to do so. The expiratory cassette is a component of ventilators which measures the pressure, flow rate, and other important values of the gas passing into the lungs of the patient. The cassette needs to be replaced if the errors "Expiratory cassette disconnected" or "Expiratory cassette error" appear on the screen. Since the cassette is located on the top of the device and is not held in by any fasteners no screwdrivers will be needed for its removal. During the replacement process, be sure to handle the cassette with care as it is a delicate instrument. The whole process should take five or less minutes from start to finish.

Step 1 — Expiratory Cassette




- Orient the ventilator so the upgrade slots (front) are facing away from you and that you are looking at the back of the device.
- Switch off the ventilator system using the on/off switch on the patient unit, which is located on the lower half of the unit behind a white door panel.
- Disconnect the ventilator system from the mains power and gas supply.

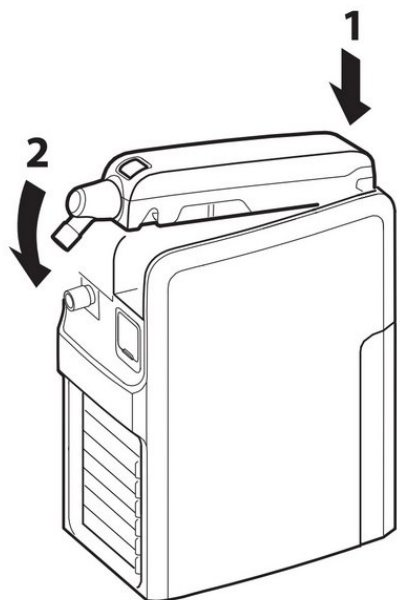
Step 2



- In the following order:
 - Press the button on the expiratory cassette.
 - Tilt the cassette upwards and remove.

 The expiratory cassette is a precision instrument and must be handled carefully.

Step 3



- Hinge the expiratory cassette and press it firmly down into lock position.
- ⚠ Make sure that the cassette clicks into position. Check that it cannot be moved upwards and that the button on top of the cassette is completely ejected.