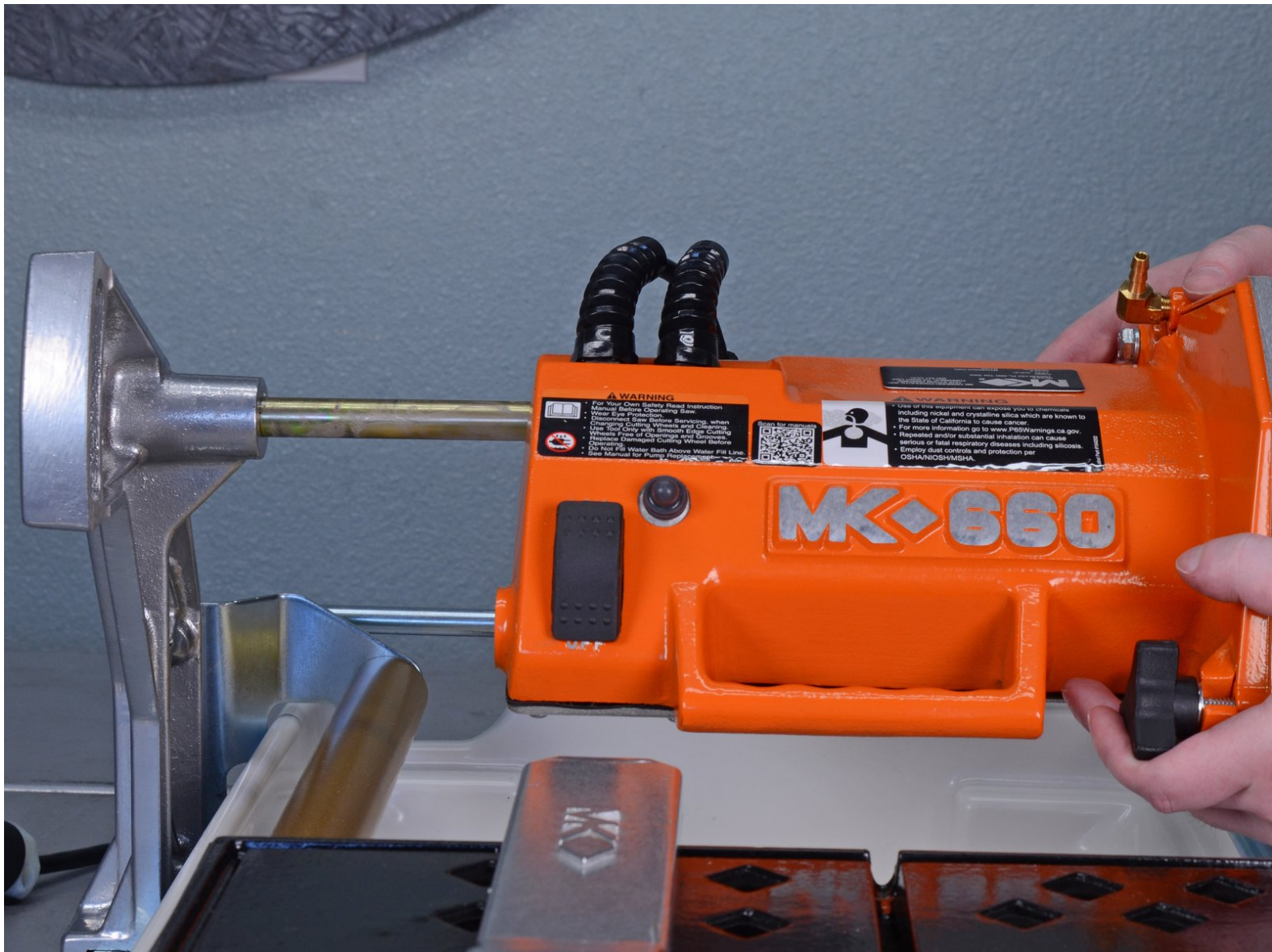




Mk Diamond Wet Saws MK660 2010 Cutting Head Replacement

How to remove the cutting head for replacement or further device service in a Mk Diamond Wet Saw MK660 2010.

Written By: Carsten Frauenheim





INTRODUCTION

How to remove the cutting head for replacement or further device service in a Mk Diamond Wet Saw MK660 2010.

Step 1 — Blade Cover



 Before you begin, make sure to power off and unplug the device from the outlet.

 If the clear water pump hose is connected, remove it now.

- Loosen the plastic knob holding the saw's cutting head in place.
- Lower the cutting head while keeping it steady.

Step 2



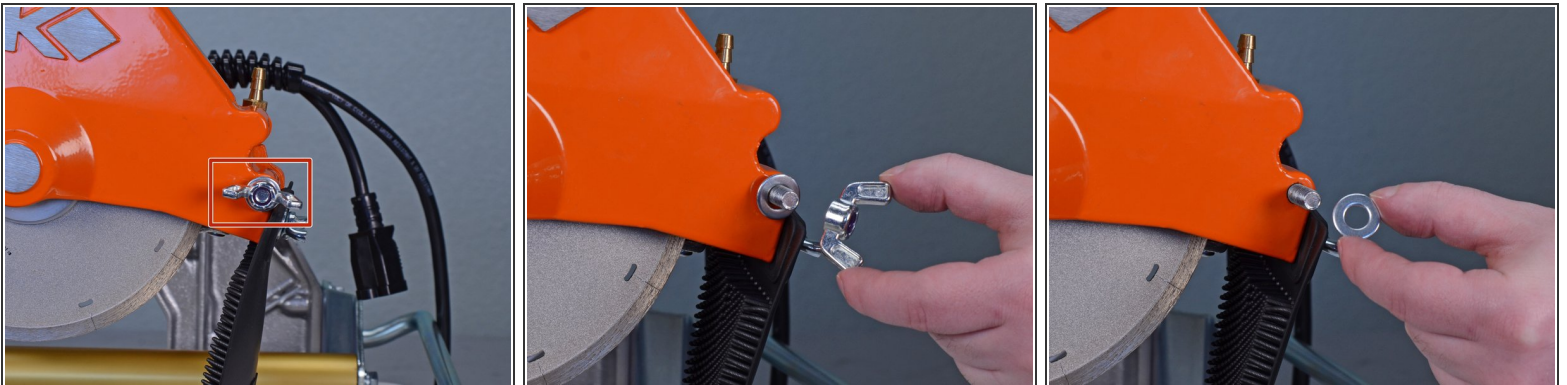
- Unscrew the knob.
- Remove it from the cutting head.

Step 3



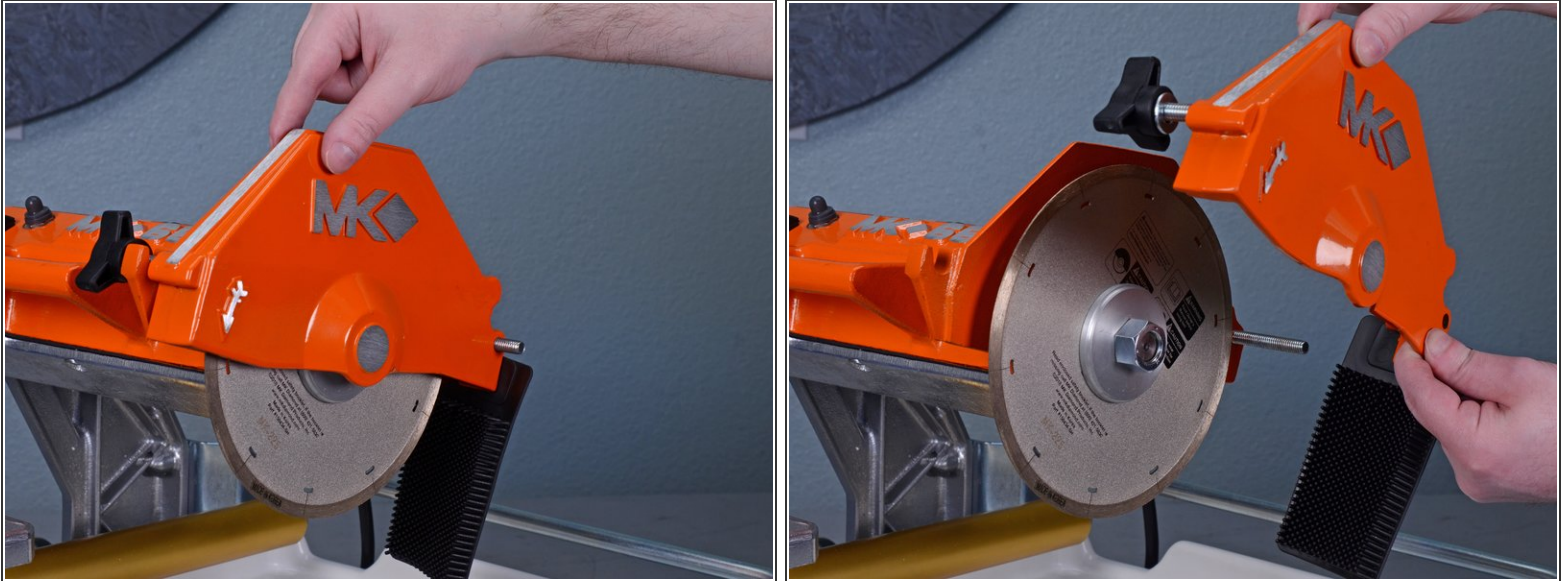
- Loosen the plastic knob holding the blade cover in place.

Step 4



- Loosen the wing nut on the blade cover pivot shaft.
- Remove the wing nut and accompanying washer.

Step 5



- Pivot the blade cover up and pull it off the shaft.

Step 6 — Blade



- Insert the provided spanner wrench into one of the four tightening holes on the inner flange behind the blade.
- Use the the provided nut wrench to loosen the hex nut while providing counterforce with the spanner wrench.

Step 7



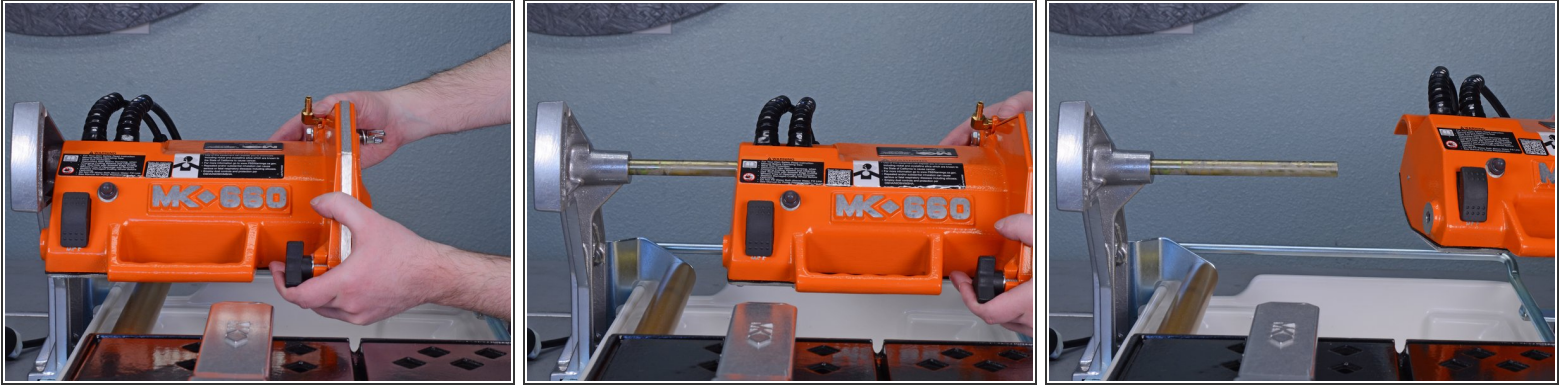
- Remove the hex nut.
- Remove the outer flange.

Step 8



- Remove the cutting blade.
⚠ The blade can be sharp, so handle with care.

Step 9 — Cutting Head



- Pull the entire cutting head straight off the shaft holding it in place.

To reassemble your device, follow these instructions in reverse order.