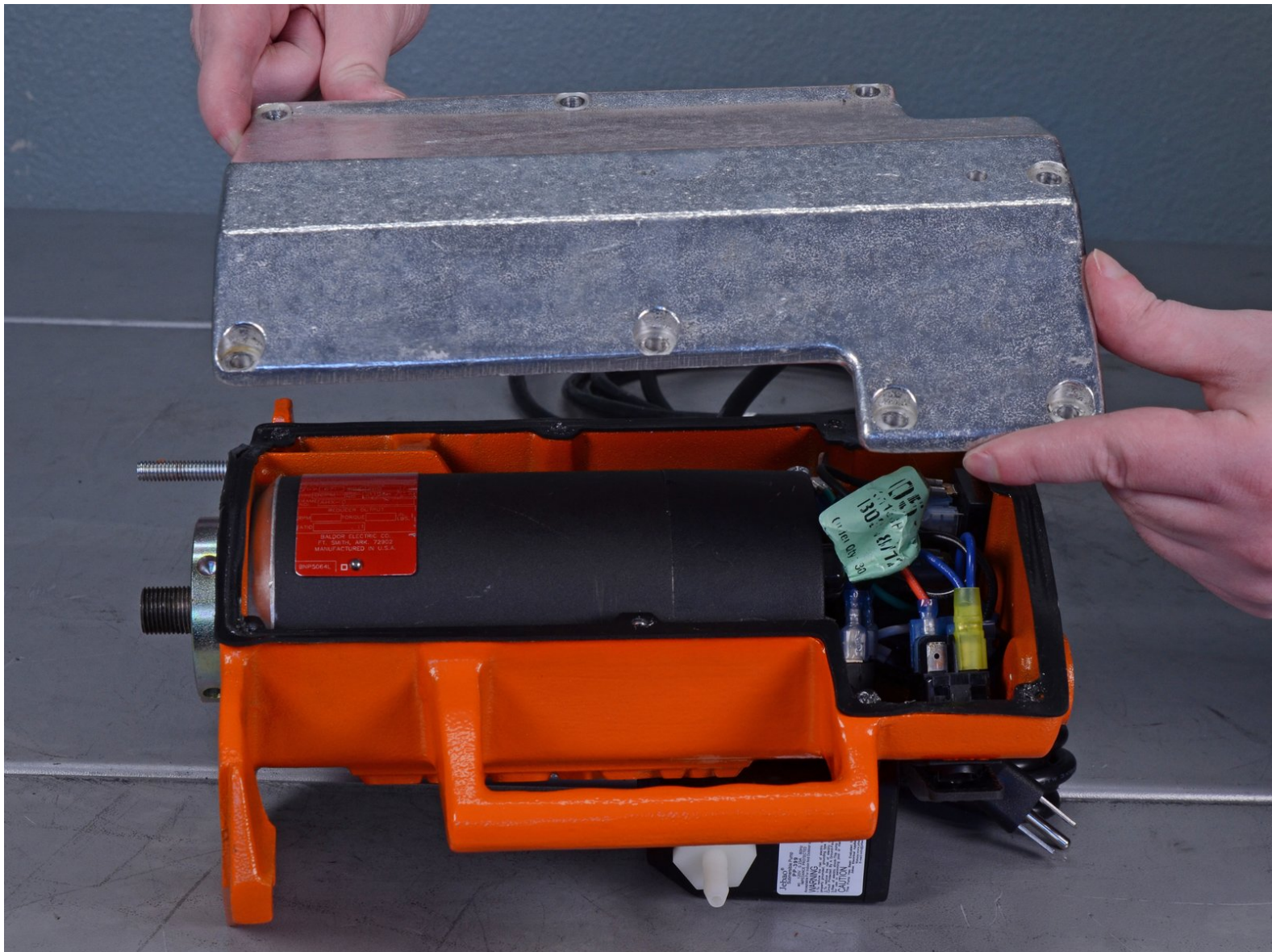




# Mk Diamond Wet Saws MK660 2010 Bottom Cover Replacement

How to remove the cutting head's bottom cover for service or replacement in a Mk Diamond Wet Saw MK660 2010.

Written By: Carsten Frauenheim



This document was generated on 2020-11-28 08:04:36 AM (MST).

## INTRODUCTION

How to remove the cutting head's bottom cover for device service or part replacement in a Mk Diamond Wet Saw MK660 2010.



### TOOLS:

- [Phillips #2 Screwdriver](#) (1)




### PARTS:


- [Mk Diamond COVER, CUTTING HEAD, 660 154293](#) (1)



## Step 1 — Blade Cover



 Before you begin, make sure to power off and unplug the device from the outlet.

 If the clear water pump hose is connected, remove it now.

- Loosen the plastic knob holding the saw's cutting head in place.
- Lower the cutting head while keeping it steady.

## Step 2



- Unscrew the knob.
- Remove it from the cutting head.

### Step 3



- Loosen the plastic knob holding the blade cover in place.

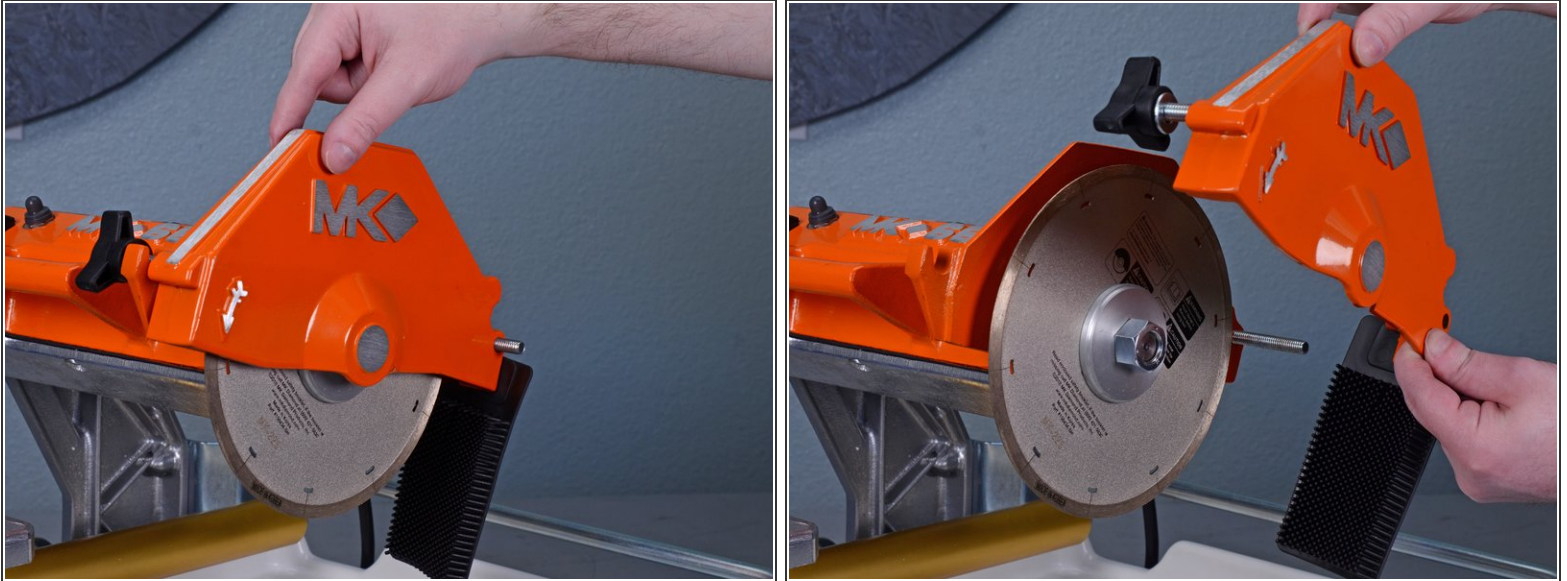
### Step 4



- Loosen the wing nut on the blade cover pivot shaft.
- Remove the wing nut and accompanying washer.



## Step 5



- Pivot the blade cover up and pull it off the shaft.

## Step 6 — Blade



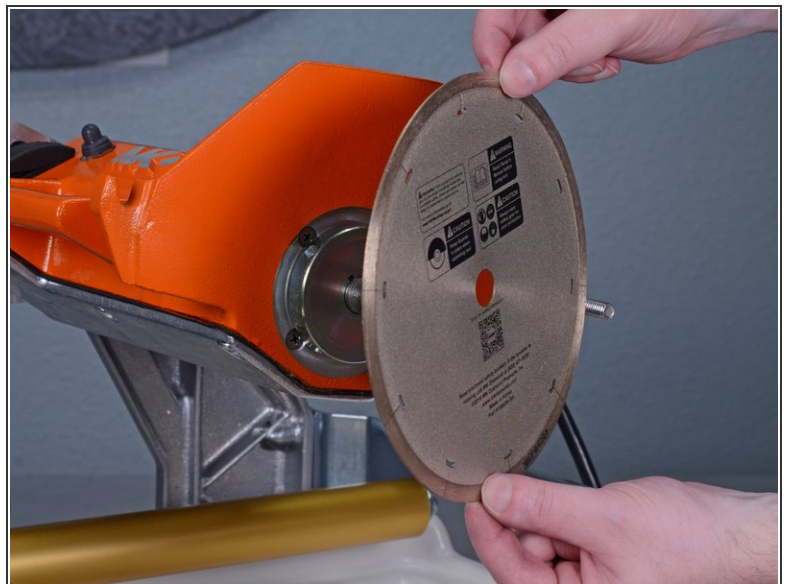
- Insert the provided spanner wrench into one of the four tightening holes on the inner flange behind the blade.
- Use the the provided nut wrench to loosen the hex nut while providing counterforce with the spanner wrench.

## Step 7



- Remove the hex nut.
- Remove the outer flange.

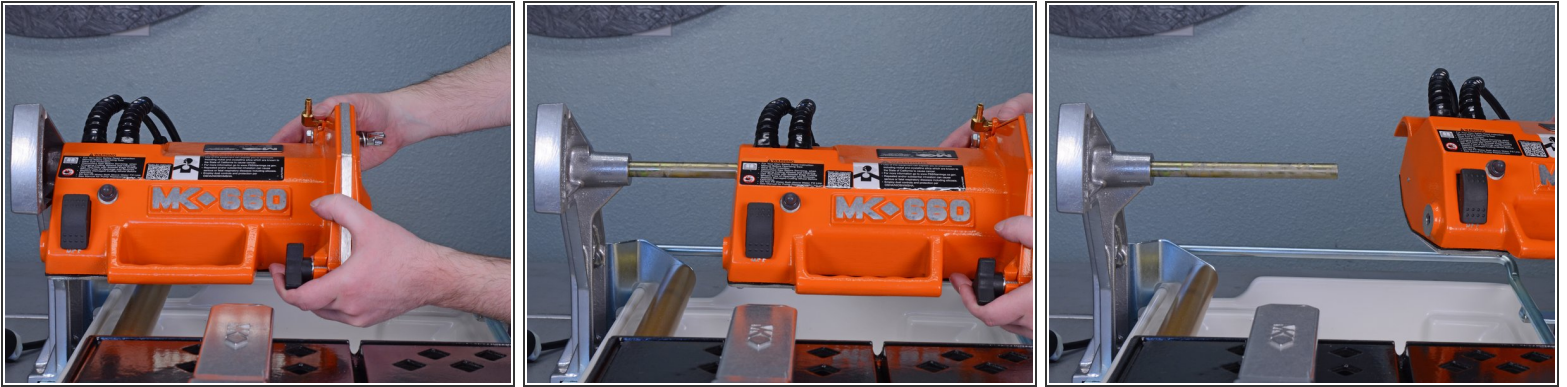
## Step 8



- Remove the cutting blade.
  - ⚠ The blade can be sharp, so handle with care.

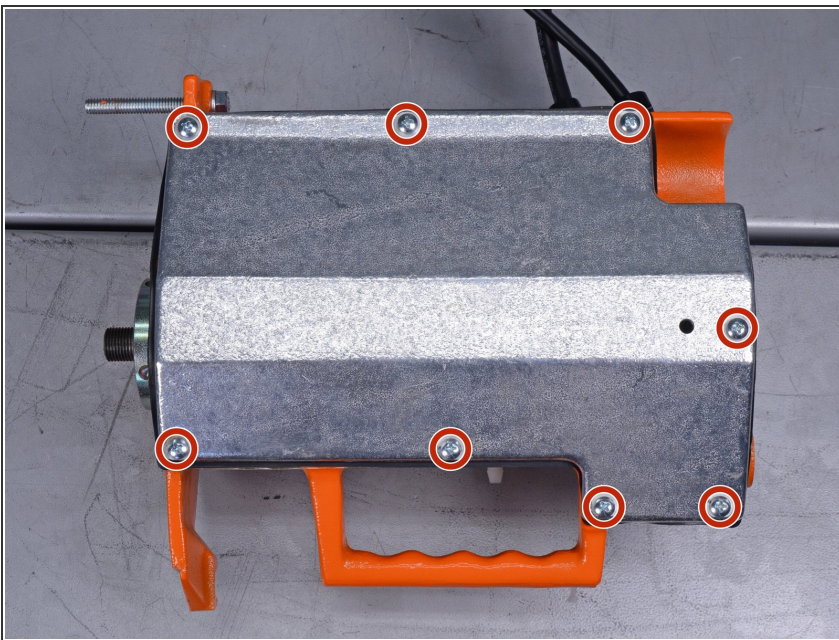


## Step 9 — Cutting Head



- Pull the entire cutting head straight off the shaft holding it in place.

## Step 10 — Bottom Cover



- Remove the eight Phillips #2 screws on the underside of the cutting head.

## Step 11



- Remove the bottom cover.

To reassemble your device, follow these instructions in reverse order.