



HP Stream 11-d008TU Battery Replacement

This guide will show you how to change the battery in a HP Stream 11-d008TU.

Written By: CONVERSION



INTRODUCTION

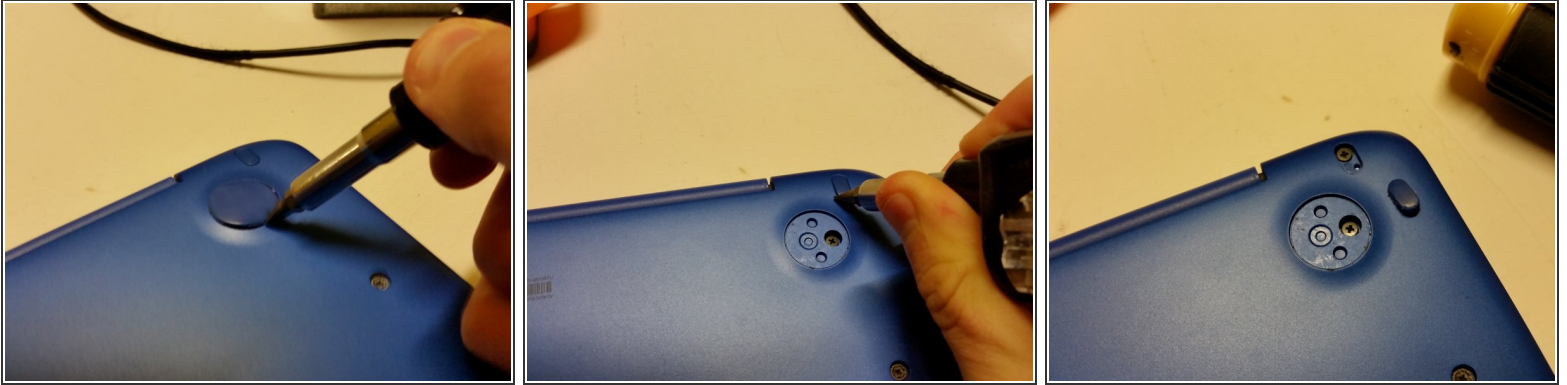
Warning: Batteries can be dangerous. Exercise extreme caution when using this guide.

TOOLS:

- [Phillips #0 Screwdriver](#) (1)
- [iFixit Opening Tool](#) (1)

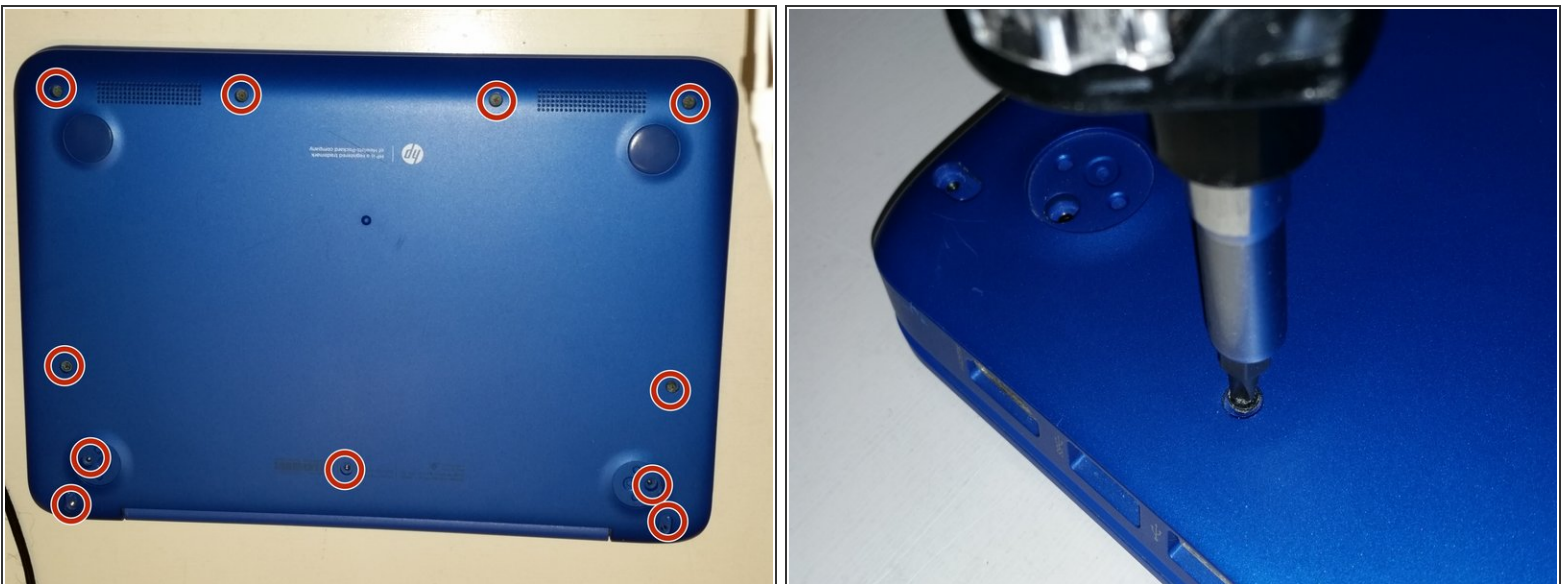
Used to pry the rubber feet off. Can be replaced with a screwdriver or other instruments.

Step 1 — Rubber Feet Removal



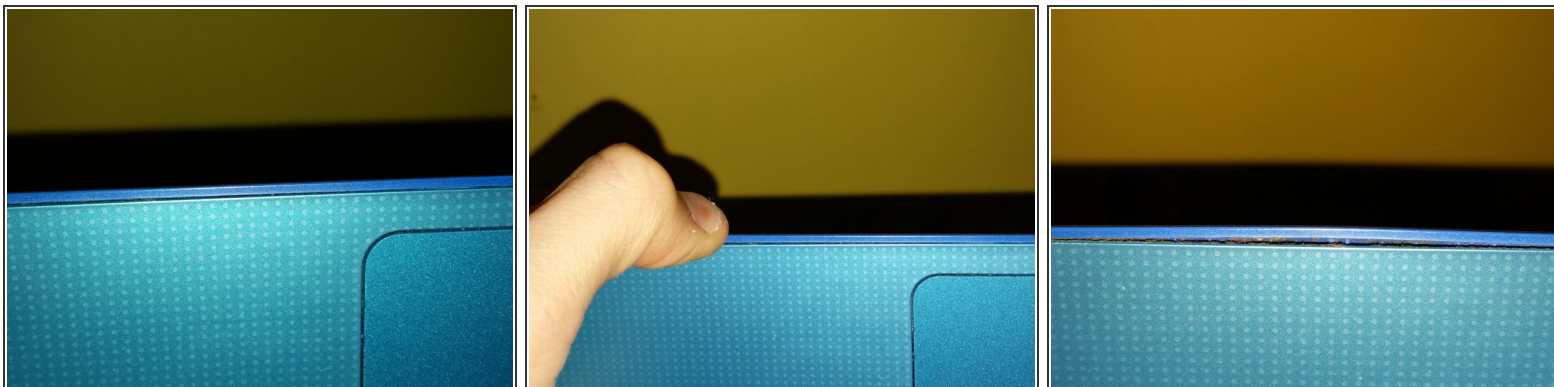
- Use a prying tool to pry the 2 rubber feet off closest to the hinge of the device
- Repeat this process for the other side of the device
- The bottom rubber feet do not have hidden screws underneath them, and as such, they are unnecessary to remove

Step 2 — Screw removal



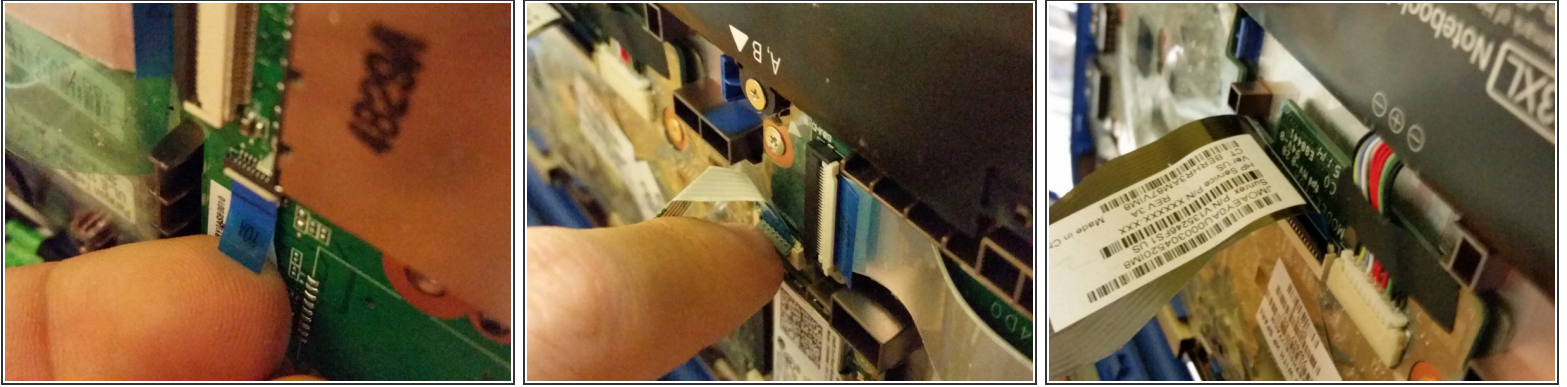
- Remove the 11x 5mm Phillips PH-0 screws (circled)

Step 3 — Keyboard Unclipping



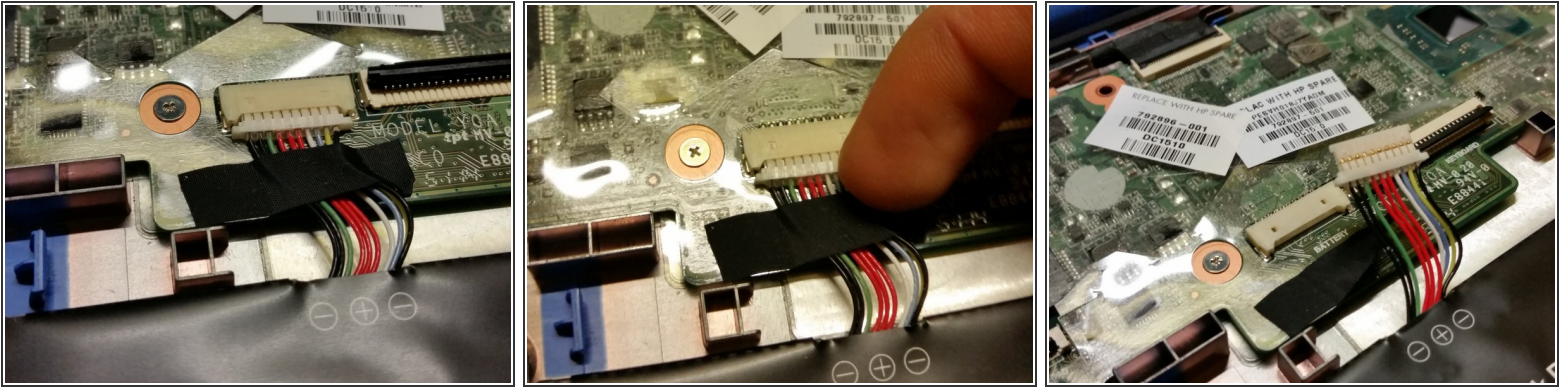
- Use your finger to pry the outer blue shell over the keyboard
- Continue this process around the edges of the device
- You may have to use a prying tool to pry the harder edges such as around the I/O ports
- Do not lift the keyboard once all the clips are undone, as there are still various cables connected

Step 4 — Keyboard removal



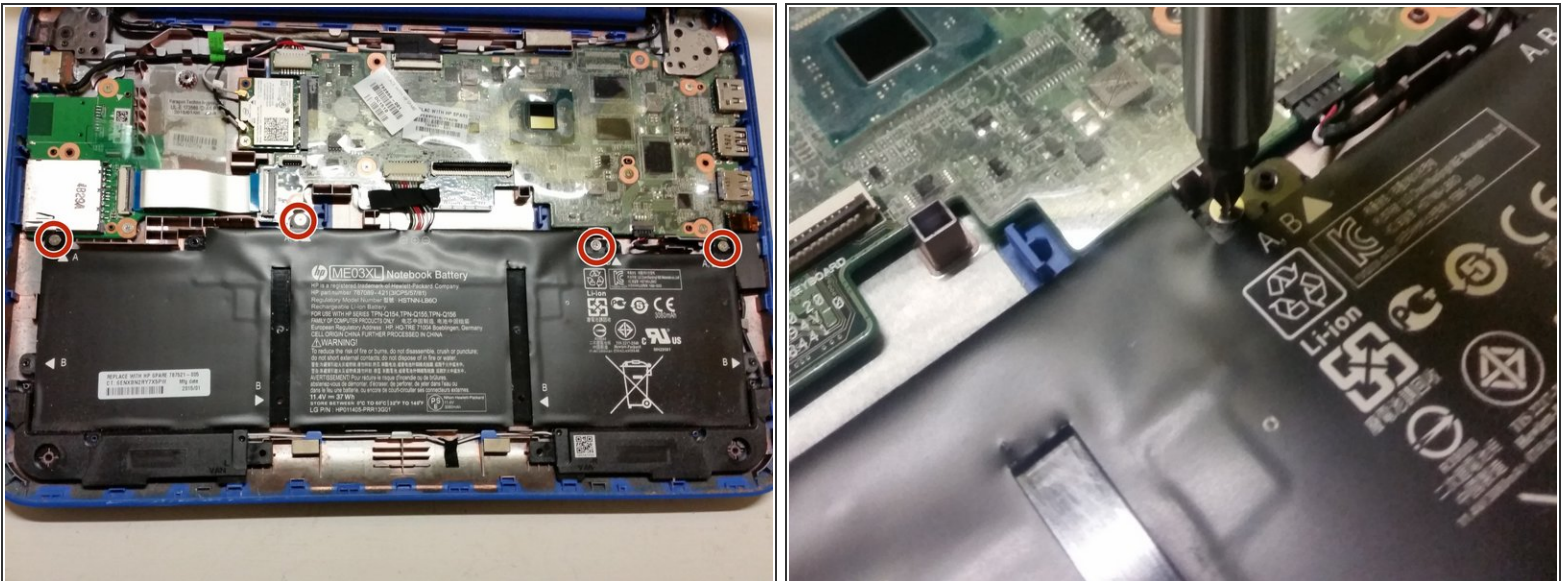
- Disconnect the power button connector by peeling back the protective tape, using your fingernail to flip the white retaining clip back, and pulling the ribbon cable out
- Disconnect the touchpad connector by using your fingernail to flip the black retaining clip back, and pulling the ribbon cable out
- Disconnect the keyboard connector by using your fingernail to flip the black retaining clip back, and pulling the ribbon cable out
- Your keyboard assembly is now safe to remove

Step 5 — Battery Connector



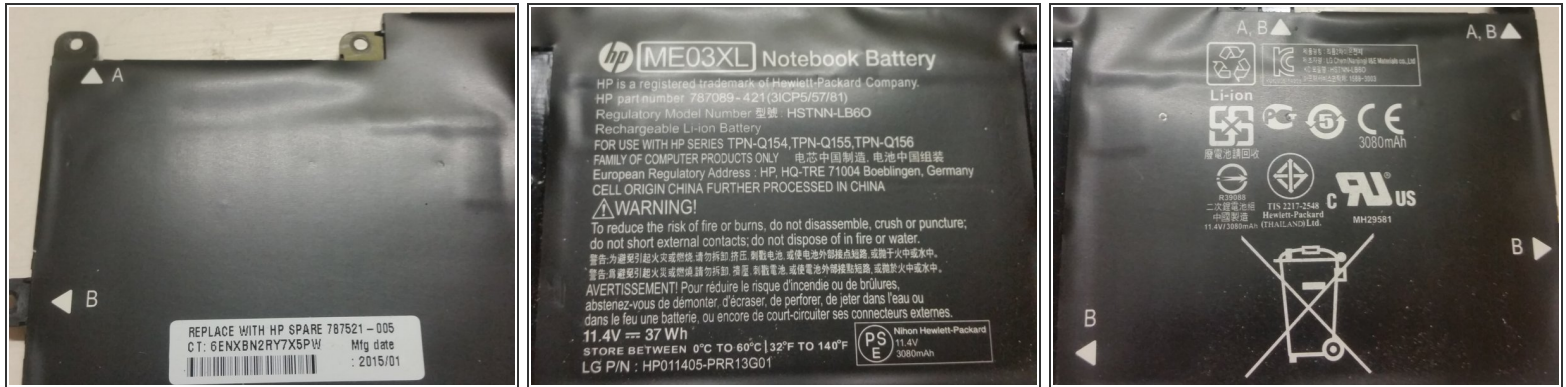
- Locate the white plastic connector on the motherboard
- Peel back the black tape holding the cable's wires in place
- Pull the white connector out by pulling the white plastic away from the connector
- Do not grab the connector by the wires

Step 6 — Unscrew Battery



- Remove 4x PH-0 Philips head 3mm screws (circled)

Step 7



- Lift the battery out of the case vertically

To reassemble your device, follow these instructions in reverse order.