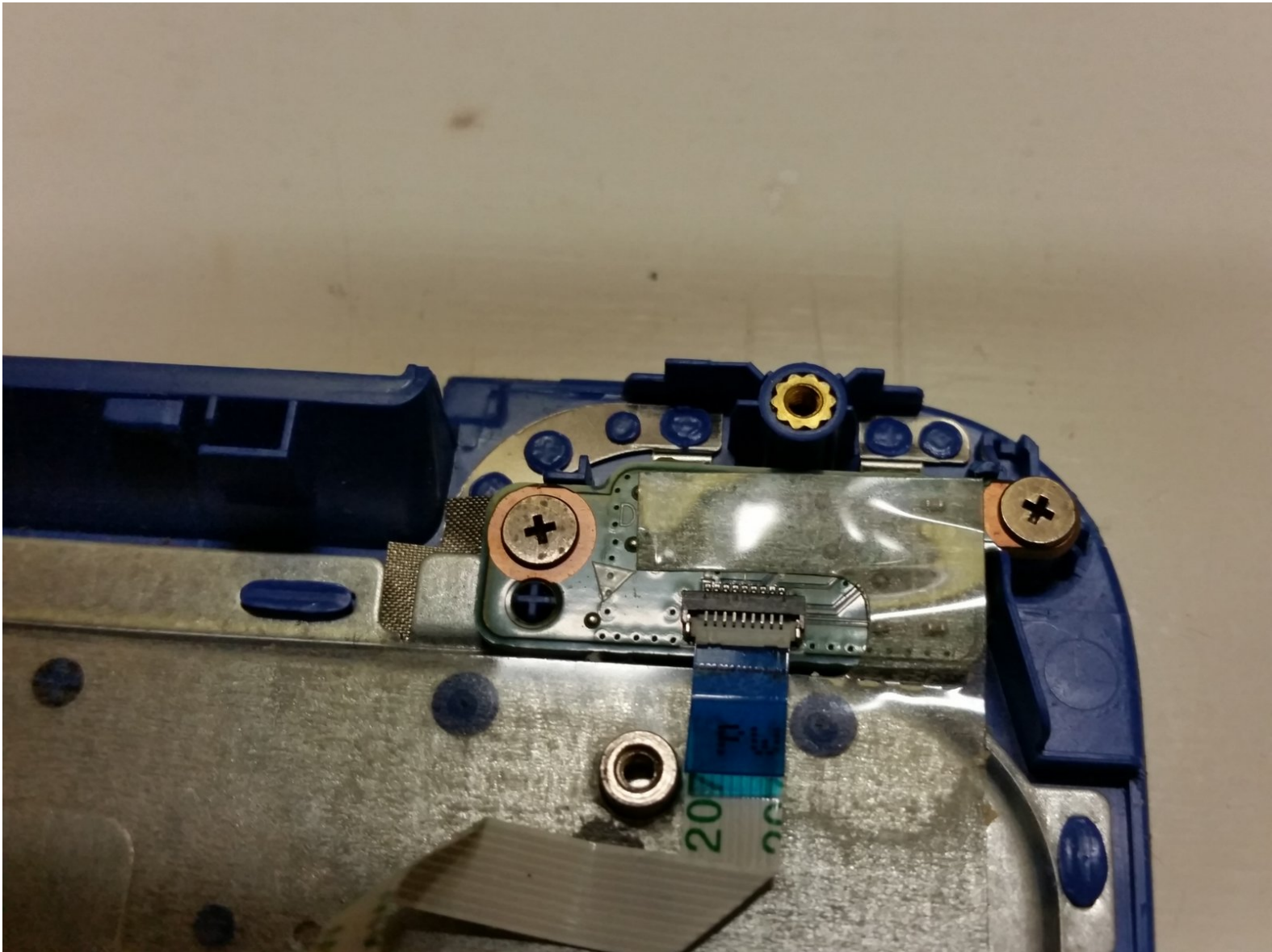




# HP Stream 11-d008TU Power Button Replacement

This guide will show how to replace the power button on the HP Stream 11-d008TU

Written By: CONVERSION



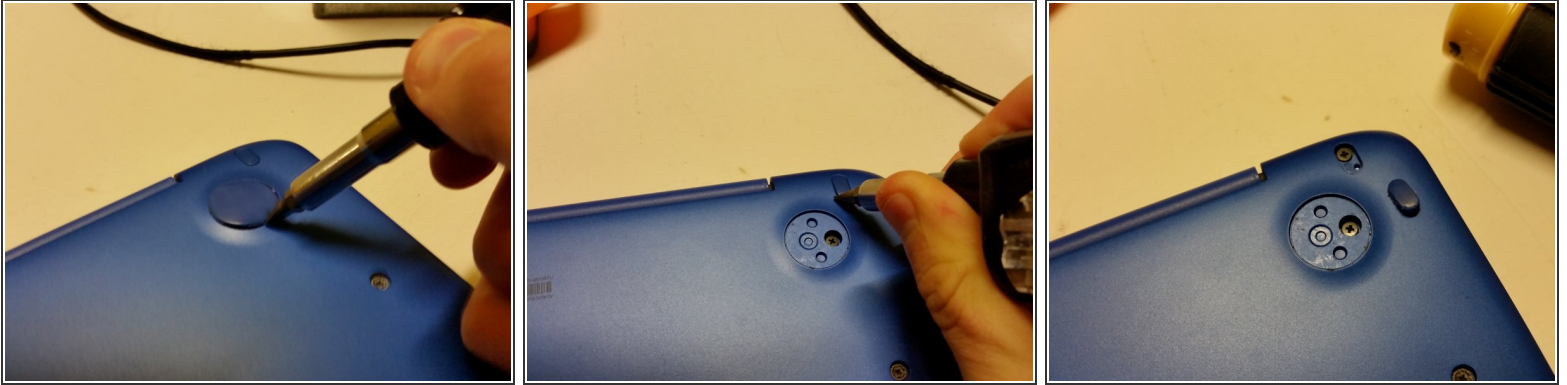


## TOOLS:

- [Phillips #0 Screwdriver](#) (1)
- [iFixit Opening Tools](#) (1)

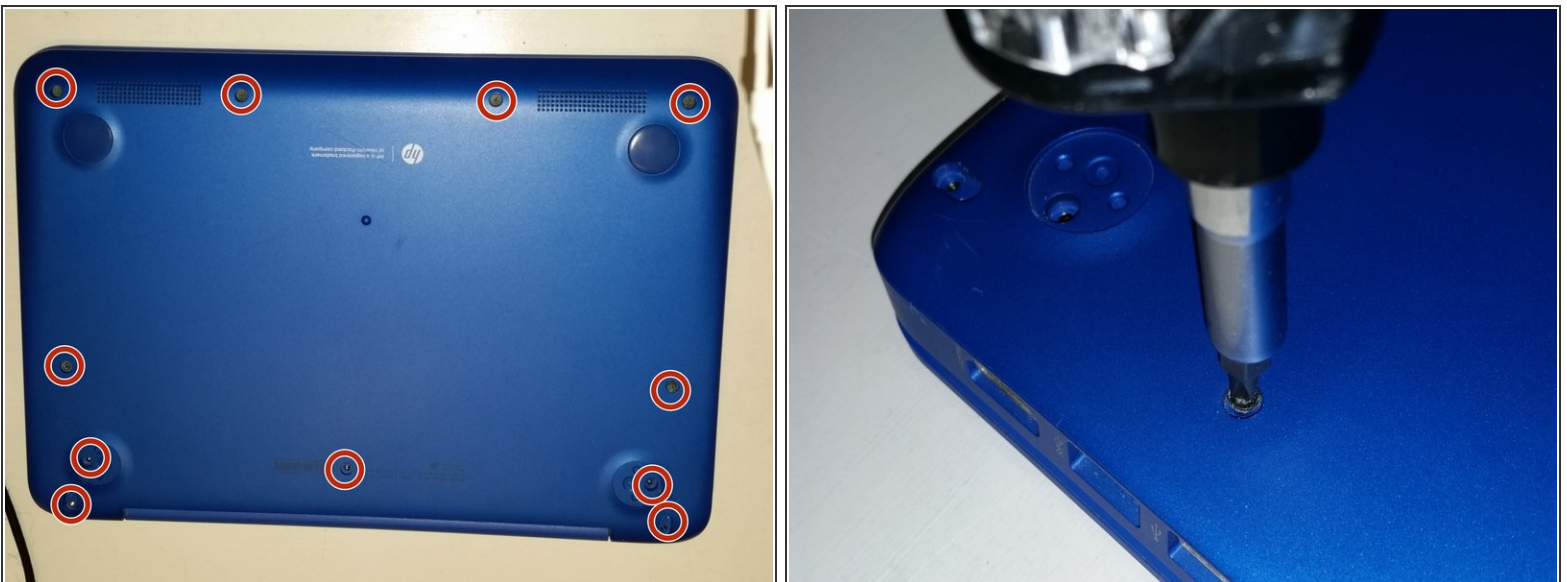
*Used to pry the rubber feet off. Can be replaced with a screwdriver or other instruments.*

## Step 1 — Rubber Feet Removal



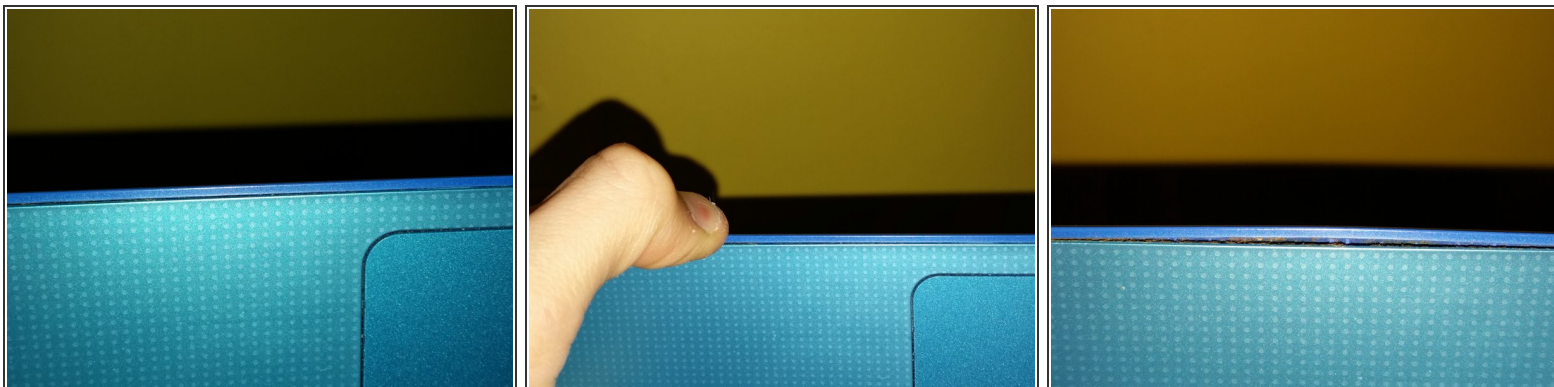
- Use a prying tool to pry the 2 rubber feet off closest to the hinge of the device
- Repeat this process for the other side of the device
- The bottom rubber feet do not have hidden screws underneath them, and as such, they are unnecessary to remove

## Step 2 — Screw removal



- Remove the 11x 5mm Phillips PH-0 screws (circled)

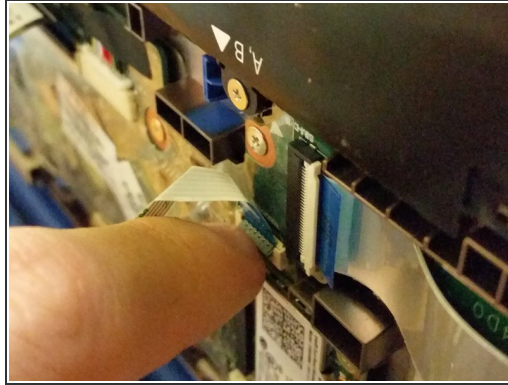
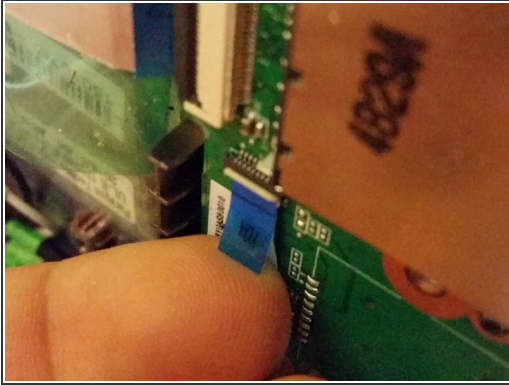
## Step 3 — Keyboard Unclipping



- Use your finger to pry the outer blue shell over the keyboard
- Continue this process around the edges of the device
- You may have to use a prying tool to pry the harder edges such as around the I/O ports
- Do not lift the keyboard once all the clips are undone, as there are still various cables connected

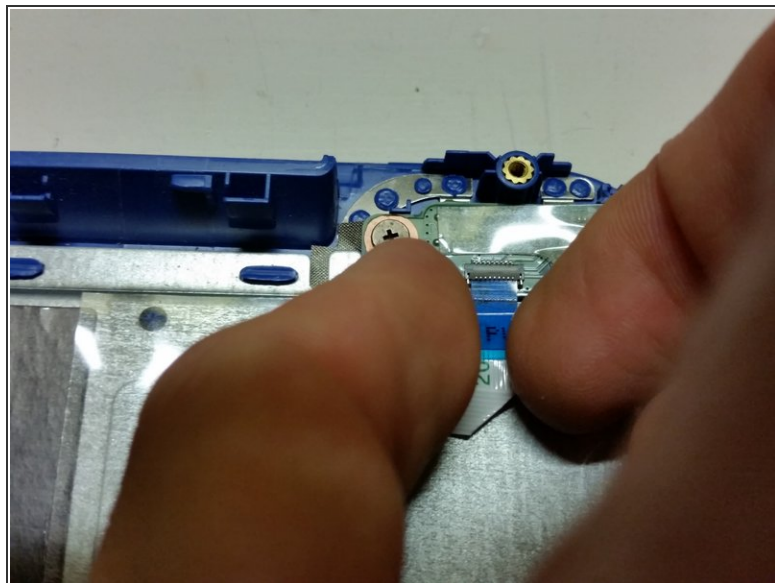
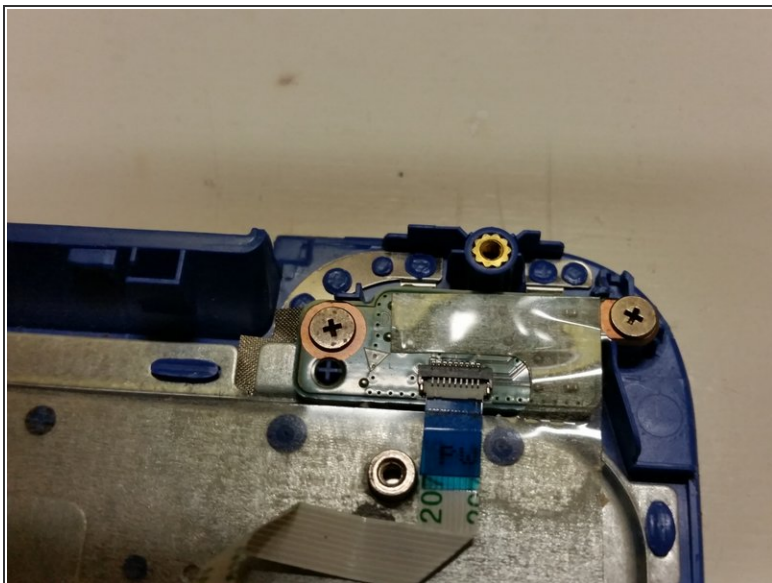


## Step 4 — Keyboard removal



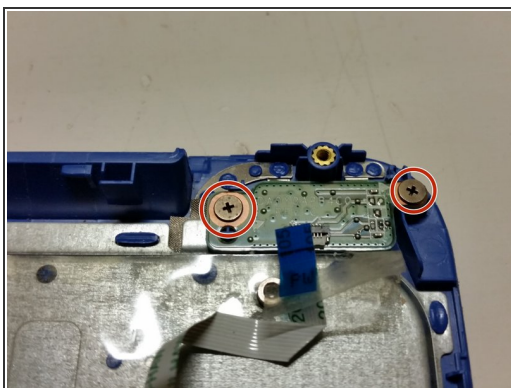
- Disconnect the power button connector by peeling back the protective tape, using your fingernail to flip the white retaining clip back, and pulling the ribbon cable out
- Disconnect the touchpad connector by using your fingernail to flip the black retaining clip back, and pulling the ribbon cable out
- Disconnect the keyboard connector by using your fingernail to flip the black retaining clip back, and pulling the ribbon cable out
- Your keyboard assembly is now safe to remove

## Step 5 — Connector removal



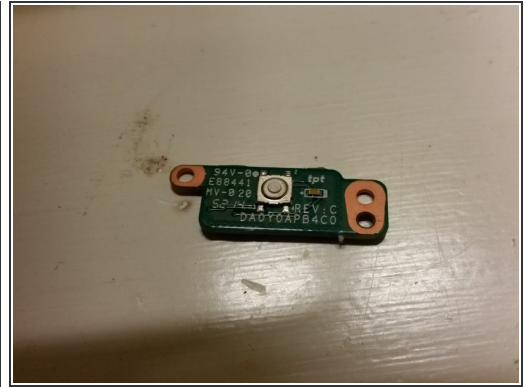
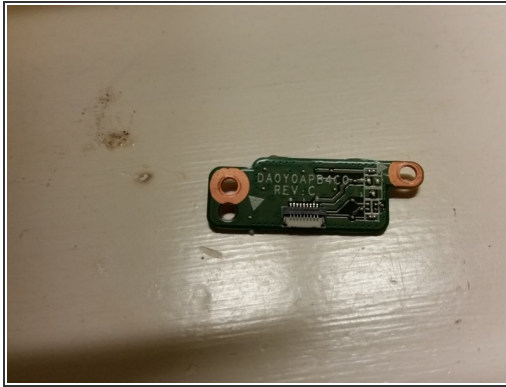
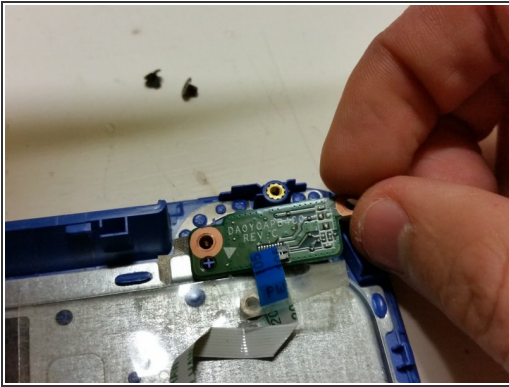
- Remove the power button connector from the power button by flipping the white tab up and pulling the ribbon cable out

## Step 6 — Unscrew Button



- Unscrew the two Philips PH0 2.5mm screws

## Step 7



- Lift the power button out of the slot

To reassemble your device, follow these instructions in reverse order.