



# MacBook Pro 13" Retina Display Late 2012

## Display Assembly Replacement

Prereq for upper case.

Written By: Walter Galan



---

# INTRODUCTION

Prereq for upper case.



## TOOLS:

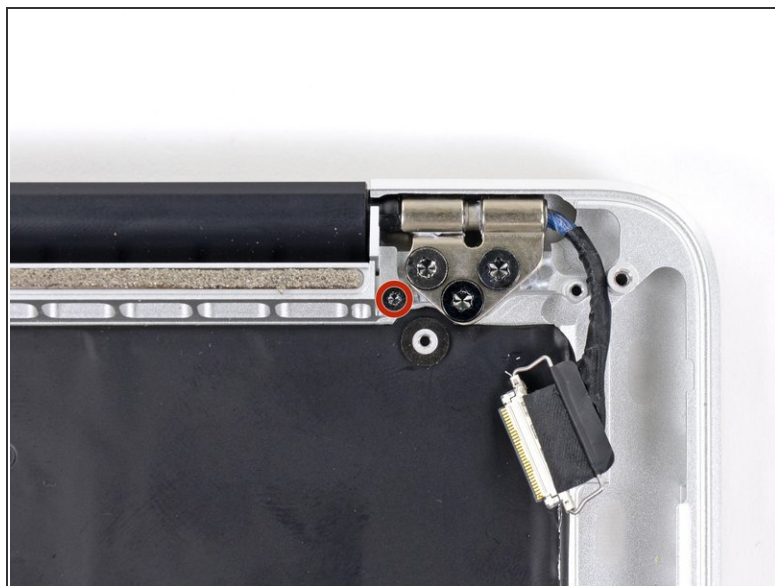
- [T8 Torx Screwdriver](#) (1)
  - [Tweezers](#) (1)
-

## Step 1 — Display Assembly



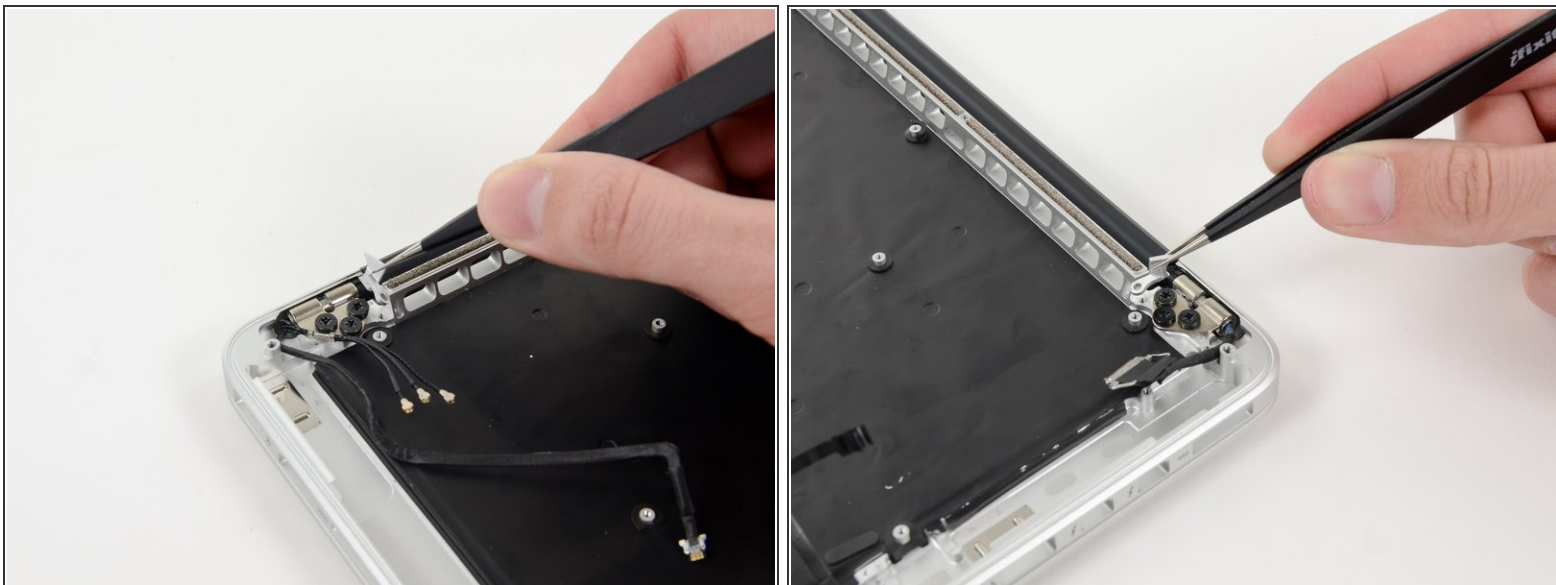
- Use a pair of tweezers to lift the rubber hinge covers up off the right and left display hinges.

## Step 2



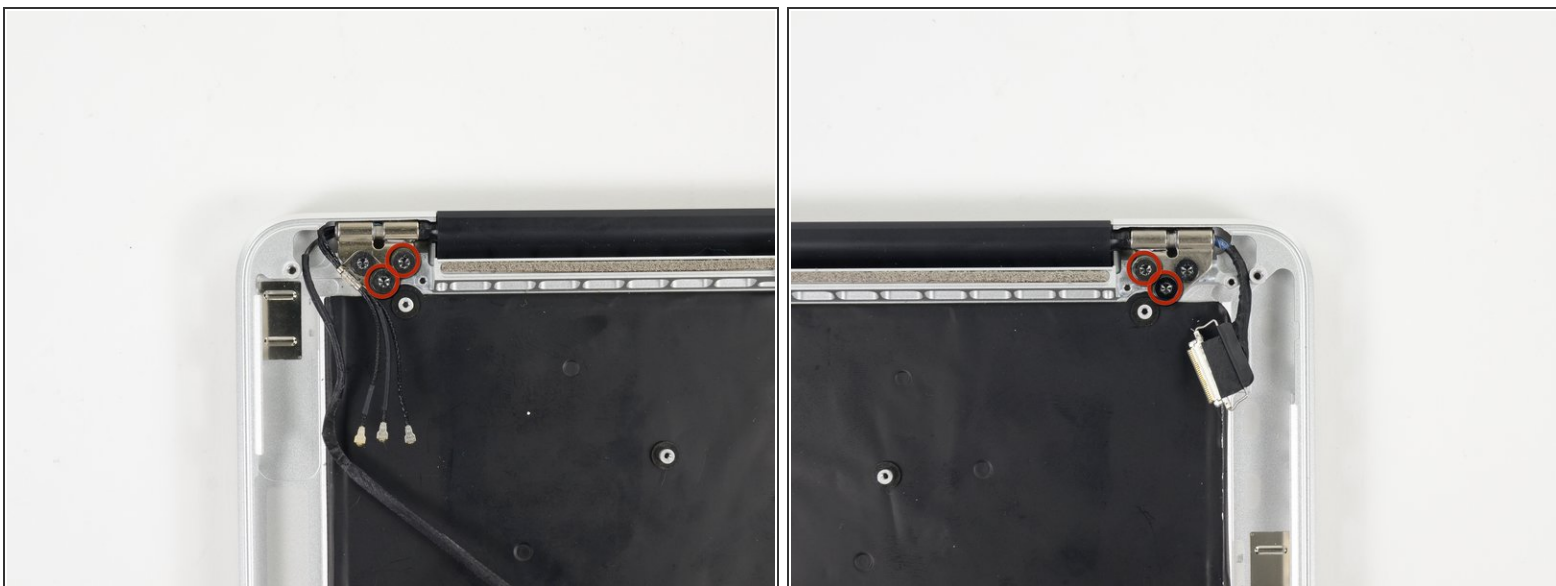
- Remove the 3.2 mm T5 Torx screws (one on each side) securing the aluminum hinge brackets to the upper case.

### Step 3



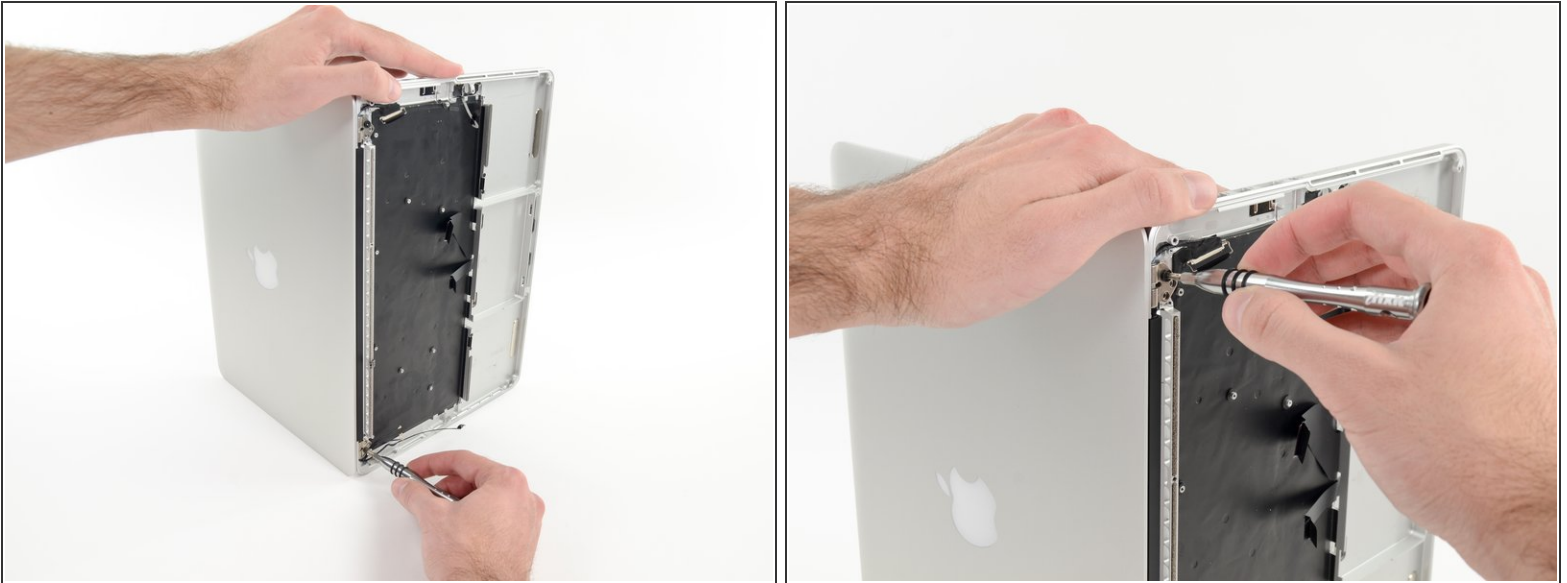
- Use a pair of tweezers to lift aluminum hinge brackets off the right and left display hinges.


### Step 4




- Remove the four inner 5.3 mm T8 Torx screws (two on each side) securing the display to the upper case.

## Step 5



 Open the MacBook Pro approximately 110 degrees, and place it sideways on the table, as shown.

- While holding the display and upper case together with your left hand, remove the remaining T8 Torx screw from the lower display bracket.

 Be sure to hold the display and upper case together with your left hand. Failure to do so may cause the freed display/upper case to fall, potentially damaging each component.

- Remove the last remaining T8 Torx screw securing the display to the upper case.



## Step 6



- Grip both halves of the device, one in each hand.
- Gently push forward on the bottom half of the device to detach it from the display assembly.
- Carefully set each component aside, making sure to set down the lower half keyboard-side down.

To reassemble your device, follow these instructions in reverse order.