



How to replace the screen on a patio door.

How to replace the screen on an aluminium screen door.

Written By: Jessica Bowers



INTRODUCTION

If you have a screened in porch/lanai and either kids or animals, it's only a matter of time before a nose, hand, paw or toy go through it. Once this happens insects, lizards, snakes, lawn debris, and rodents are able make your once clean and beautiful porch into their new home.

This fix is necessary for those who have screened in lanais, but this process can be used for any screen. Not only does knowing how to replace screens save homeowners and renters money, it also helps prevent unnecessary waste in landfills. The old mesh can either go into a recycling bin or be reused around the house. Some uses include, filtering old paint, shielding your gutters, keeping drains clear, and even putting it over freshly seeded grass patches to prevent birds from eating the grass seeds until they sprout. Most screen and door companies don't like informing homeowners of this simple repair process and there are almost never screen repair guides included when you buy new screens. Many people are not familiar with how screens are made or how to repair one so this guide will assist those who need to make a repair to their patio door screen.



TOOLS:

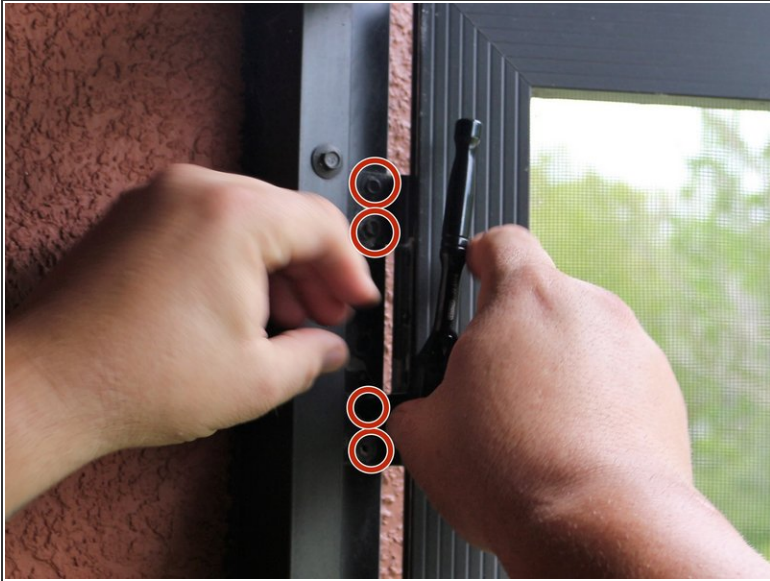
- [Phillips #1 Screwdriver](#) (1)
- [Sawhorse Folding Stands](#) (1)
- [Razor Blade](#) (1)
- [Concave and convex roller](#) (1)
- [Masking Tape](#) (1)
- [Hammer](#) (1)
- [Socket Set](#) (1)



PARTS:

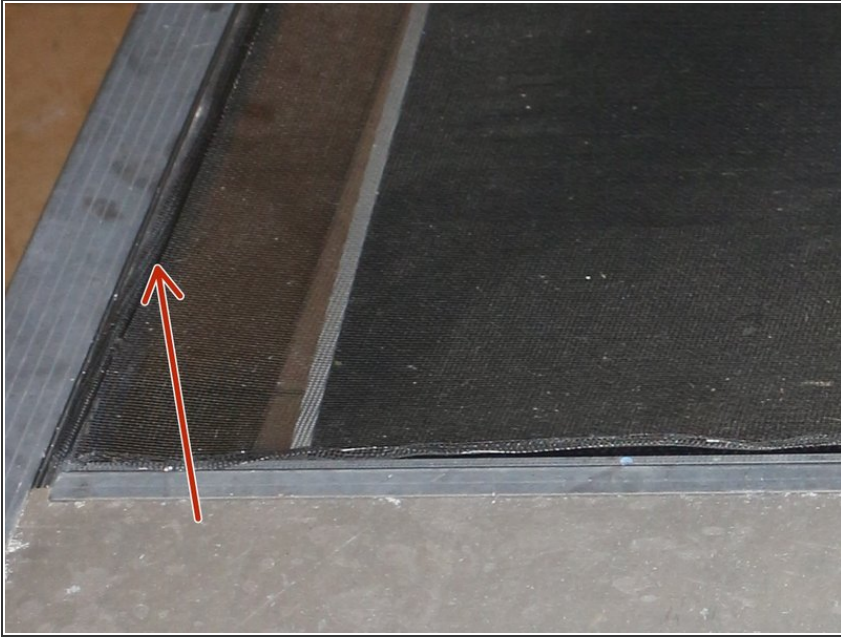
- [Fiberglass Screening](#) (1)
- [Screen Spline](#) (1)

Step 1 — Screen



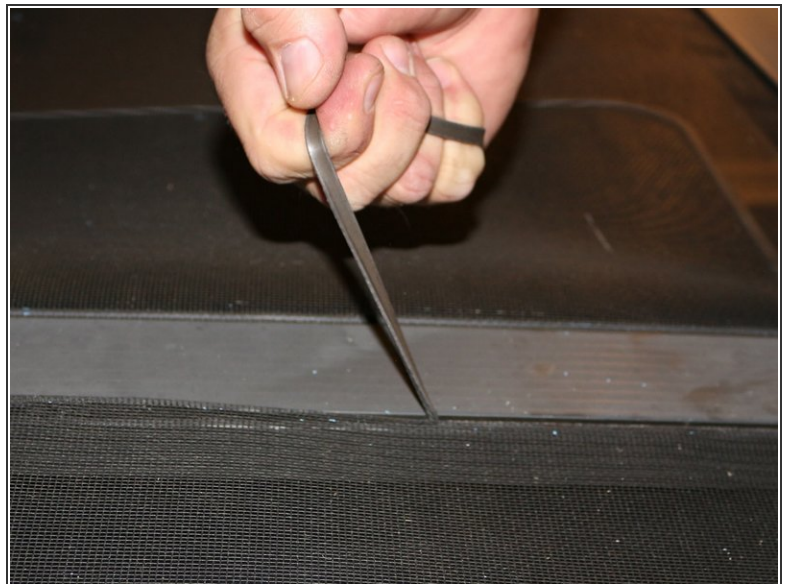
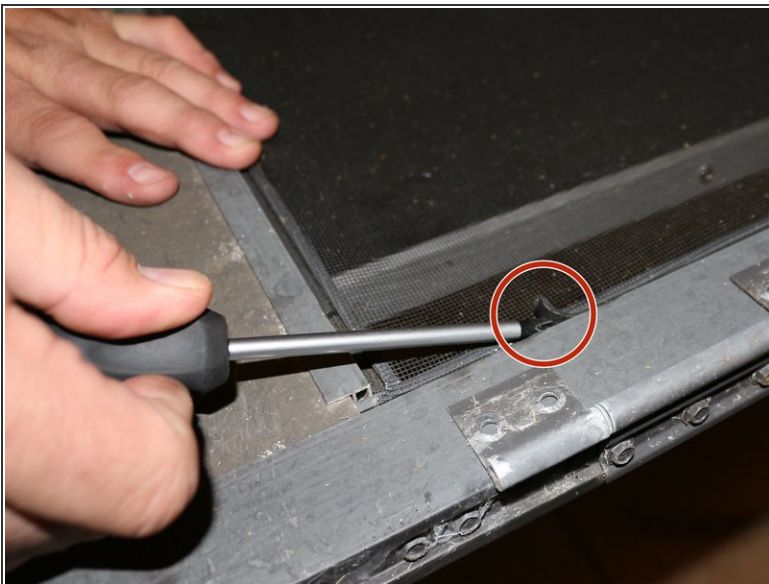
- Remove screen door from the frame.
- Disconnect any door closers or safety chains on the door.
- Remove the screws holding the door to the aluminum frame located on the hinge side of the door.
- i You will need to check the type of screw head to identify the proper tools. I ended up needing a socket wrench for the hinge and a hammer for the door closure.
- i Carefully move the door into the work area for the next step.
- ✦ The amount of screws and screw size/type will vary, so make sure you check the type of screw head before attempting to remove the door.

Step 2



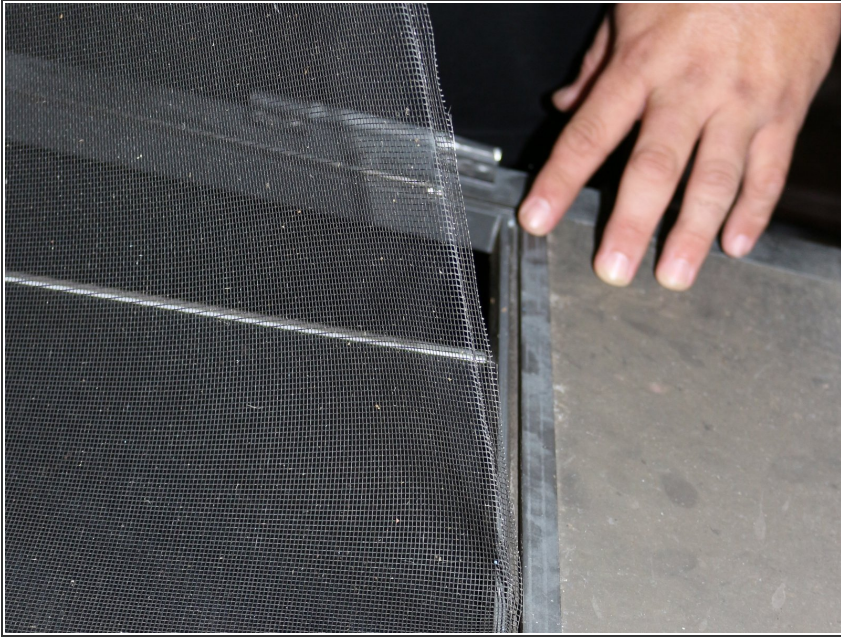
- Lay the door on a hard surface.
- Make sure the side with the spine showing is face up.

Step 3



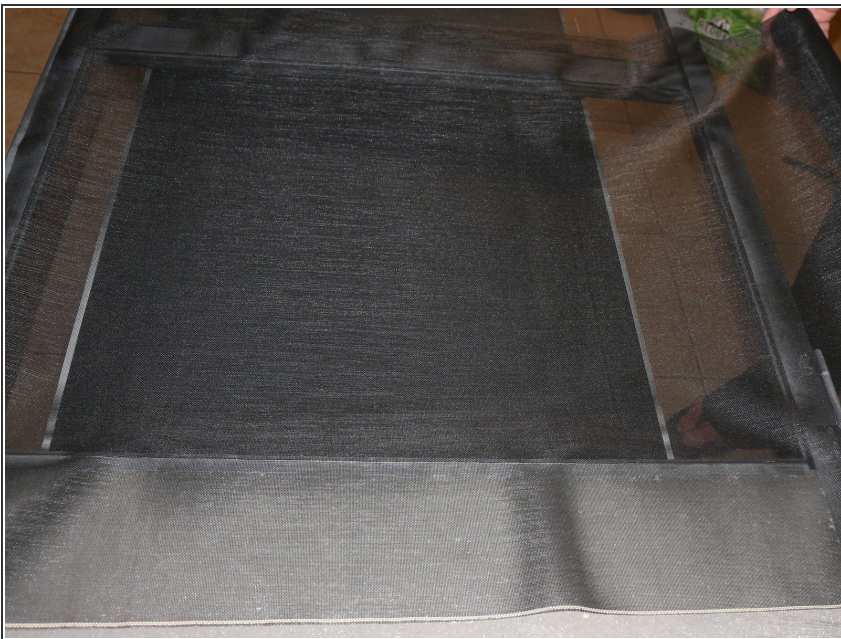
- Remove spline by using an awl or pointed object. Pry the end up and pull the spline to remove it from the frame.
- ⓘ If the spine is in good shape (not brittle, dried out, or broken) and comes out intact, it may be carefully reused. Usually, you will need replace it.

Step 4



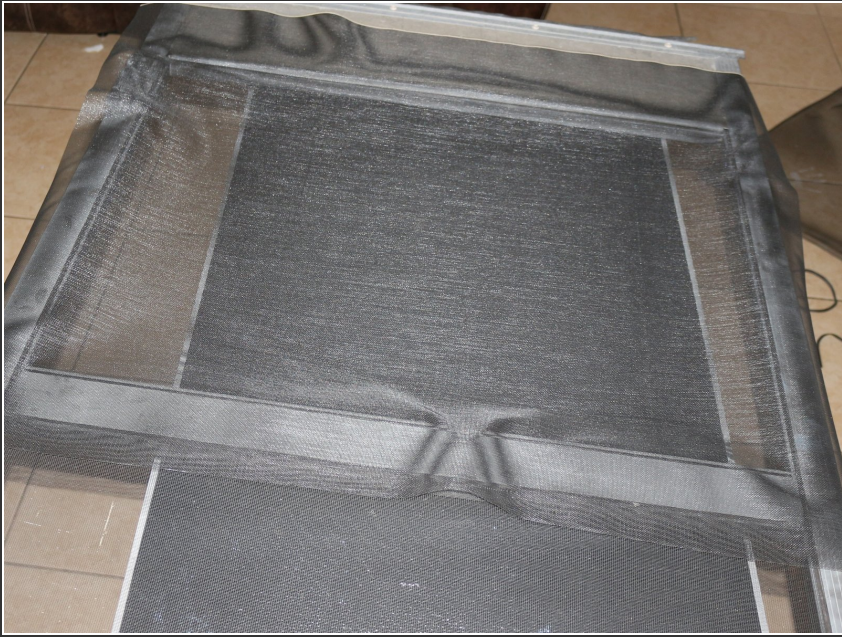
- Remove the old screen fabric from the frame.

Step 5



- Lay new screen on opening.

Step 6



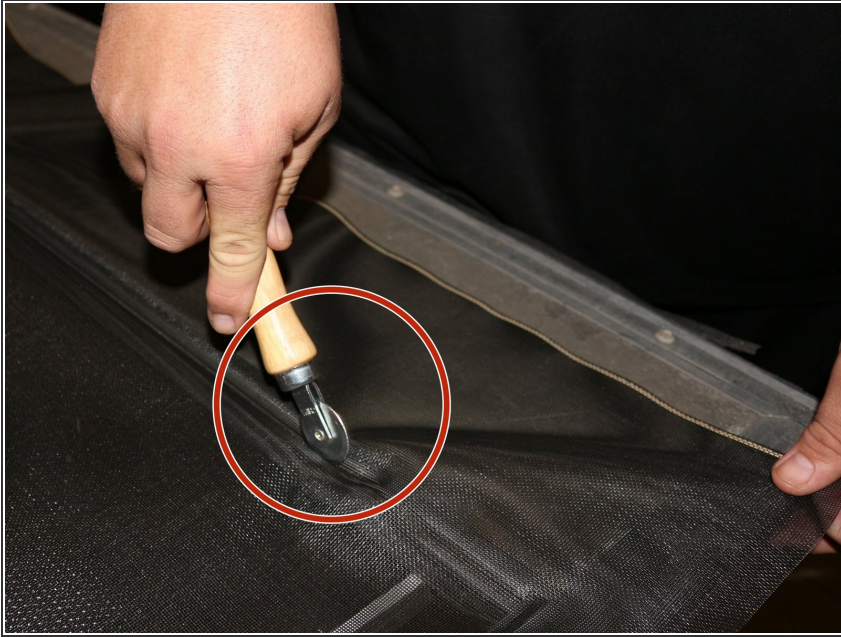
- Cut screen to a manageable size. (2 inches larger than the frame is ideal.)

Step 7



- Tape or secure screen to prevent movement during spline installation.

Step 8



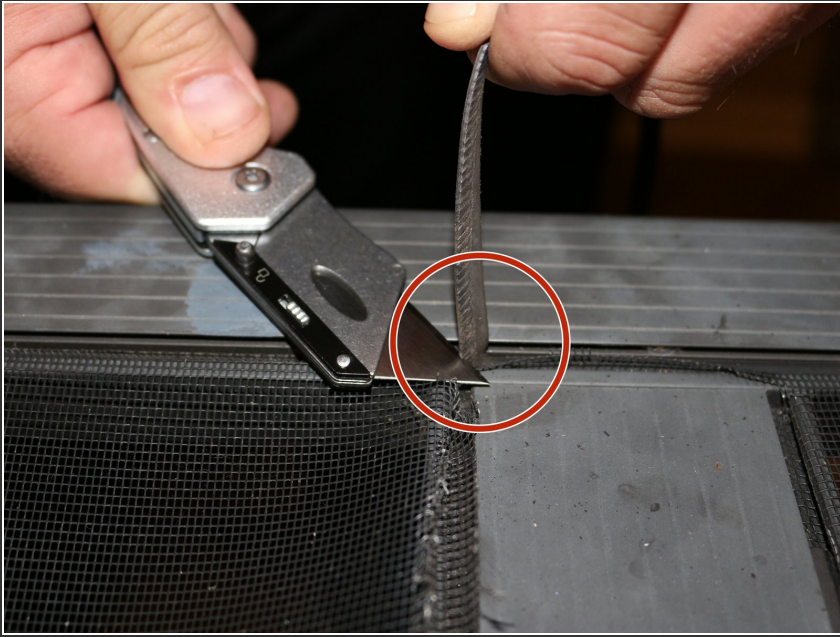
- Run concave roller over the screen in the groove designed for the spline.
- Pre-shape the screen into the channel so that the spline will go in willingly.

Step 9



- Begin at a top corner and press the spline down over the screen fabric and into the groove on the frame using the convex roller.

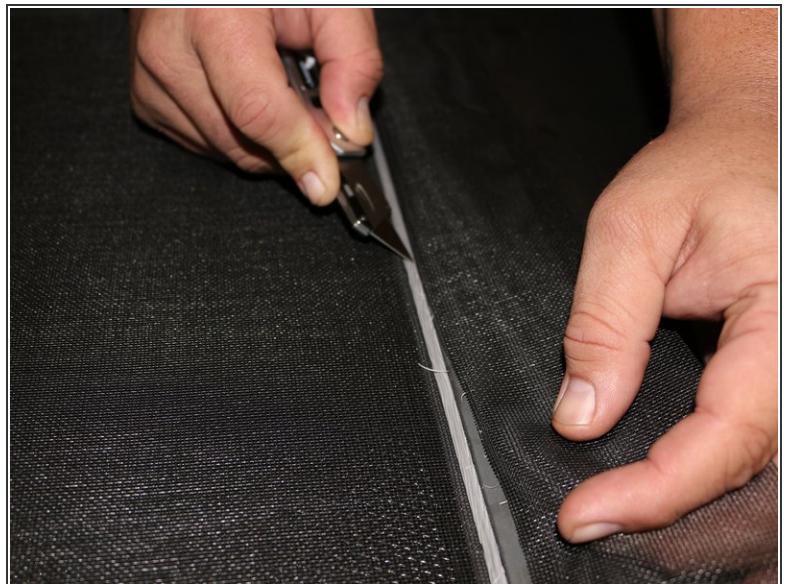
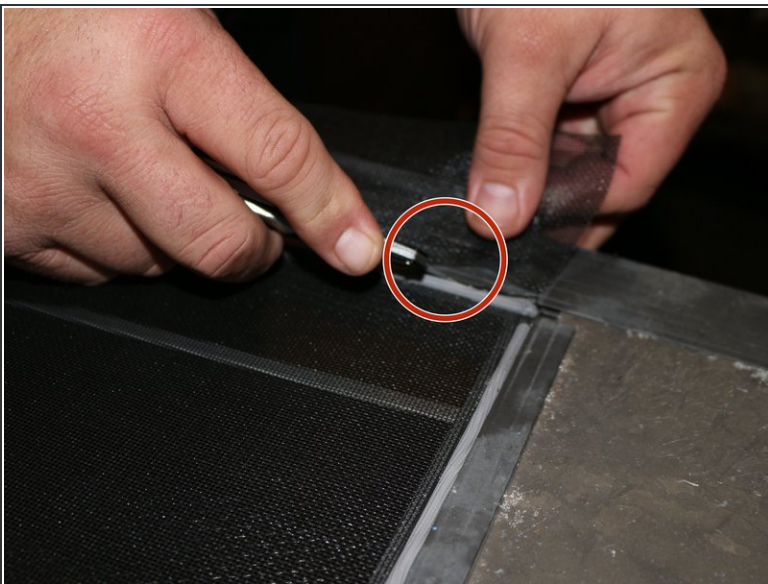
Step 10



- Trim off the excess spline using a razor blade.

⚠ Make sure you are careful and do not puncture the screen.

Step 11



- Trim the extra screen material flush at the edge of the retaining spline with a razor blade, creating a neat appearance.

⚠ Take extra care that you do not cut the screen on the inside of the spline.

Step 12



- Reinstall the door reversing the process of Step 1.

Step 13



- The job is done, and the screen door looks great.

Replacing your screen on your door is a simple process that can be knocked out in an hour's time depending on how handy of a person you are. Making this fix helps ensure you can enjoy the fresh out while keeping bugs out!