



Acer Chromebook 14 CB3-431-C7EX Display Assembly Replacement

This is a guide for removing/replacing the display assembly of the Acer Chromebook 14 CB3-431-C7EX.

Written By: Thomas Carling



INTRODUCTION

If the Acer Chromebook 14 CB3-431-C7EX is malfunctioning due to the hinge or lid or if the screen is malfunctioning or broken, use this guide to replace the display assembly.

The hinge of the Acer Chromebook 14 allows the laptop to collapse into a more portable size. A faulty hinge may cause the Acer Chromebook 14 to have issues collapsing or expanding.

Because of the proprietary rivets used to connect the hinge to the lid (top half of the laptop), it may be extremely difficult to replace just the hinge. This guide shows how to remove/replace the entire lid of the laptop.

Before buying a replacement lid, use the guide to ensure that the hinge and display is properly connected within the laptop. You may be able to fix this issue by reconnecting a loose connector or screw.

Before beginning, be sure to power down the laptop, and unplug from the external power source(s).



TOOLS:

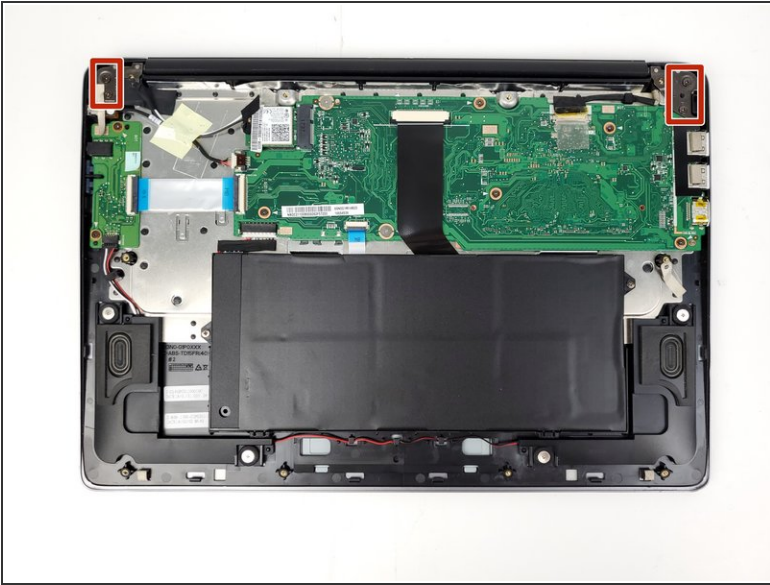
- [Phillips #0 Screwdriver](#) (1)
 - [iFixit Opening Tools](#) (1)
 - [Spudger](#) (1)
 - [Tweezers](#) (1)
-

Step 1 — Display Assembly



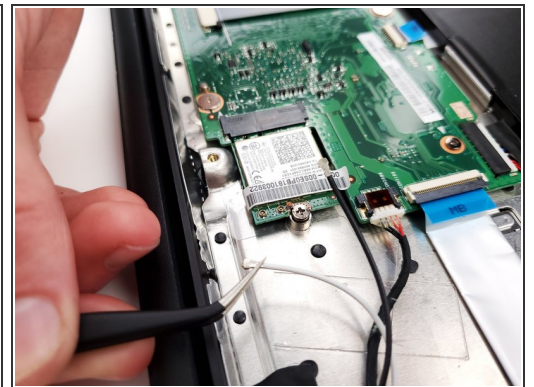
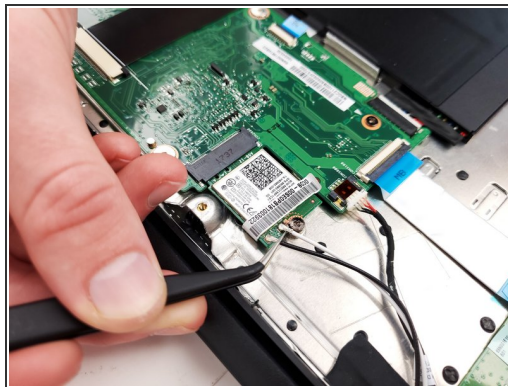
- Use a Phillips #0 screwdriver to unscrew the eight 4mm screws.
- Use a Phillips #0 screwdriver to unscrew the two 7mm screws.
- ⓘ iFixit's magnetic project mat is great for keeping the screws organized.
- Remove the cover of the device by prying up from one of the edges with a spudger or plastic opening tool.
- ⓘ If the back cover is hard to remove, carefully use a metal spudger to remove the back cover.

Step 2



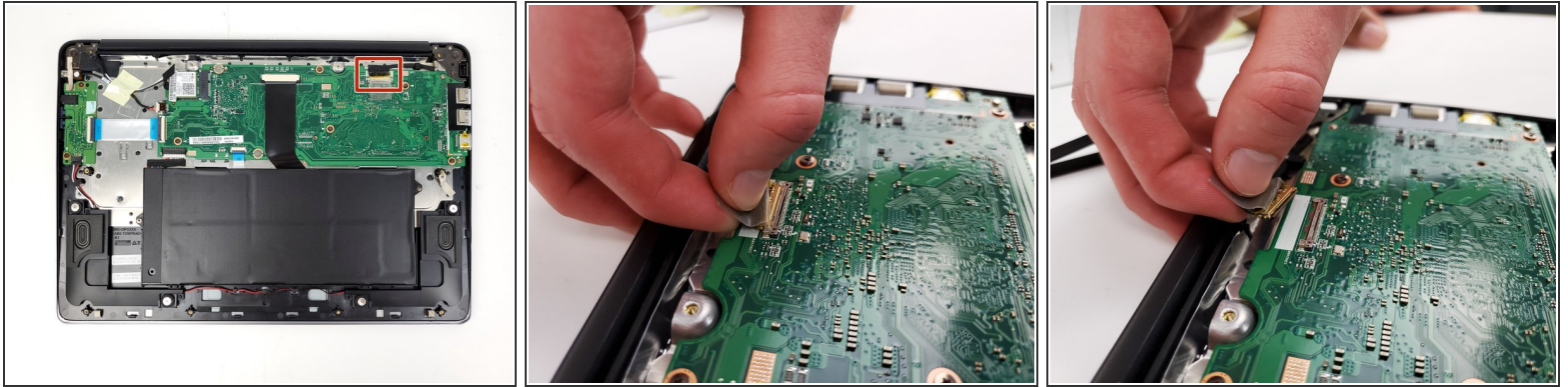
- Use a Phillips #0 screwdriver to unscrew the four 5.5mm screws from the screen brackets.
- ⓘ Use tweezers to set aside the ground tape (tan) and the electrical tape (black). This may need to be reconnected during reassembly.

Step 3



- Use tweezers to detach the webcam connectors from the motherboard.
- ⓘ Keep in mind that the black cable connects to the left pin and the white cable connects to the right pin.
- ⓘ There may be electric tape covering the connectors. Use tweezers to set aside the tape for reuse.

Step 4



- Disconnect the display panel connector from the motherboard. The connector should slide out away from the motherboard.

 Be sure to remove the connector evenly from the port.

Step 5



- To remove the lid from the laptop, pivot each end on the hinge and lift the rest of the laptop up and away from the lid.
- Remove the display assembly from the laptop case.

To reassemble your device, follow these instructions in reverse order.