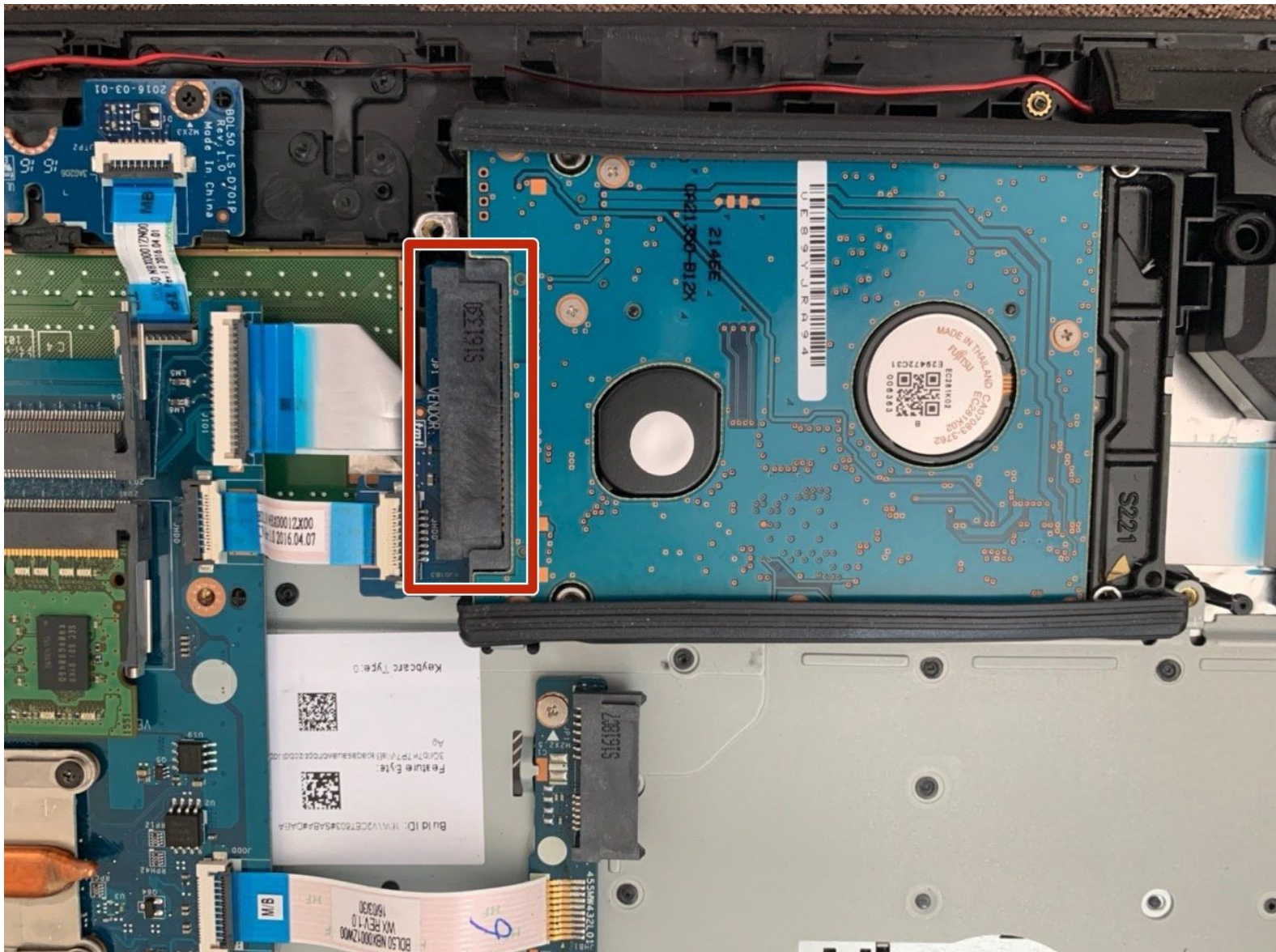




HP Pavilion 15-ba003ds Hard Drive Replacement

How to replace the hard drive in an HP Pavilion 15-ba003ds.

Written By: LI XU



INTRODUCTION

If you have an HP Pavilion 15-ba003ds with a corrupt internal hard drive or want to upgrade your internal storage capacity, use this guide to remove your old or faulty internal hard drive.

The internal hard drive is a component that stores everything from documents, pictures, and videos to the computer's operating system and application preferences. Some problems associated with a bad internal hard drive include files that will not open, unusual sounds, a lack of storage space, slow operation, a screen that freezes, or other such annoying behaviors.

Before following this guide, restart your computer, uninstall or delete unused applications and files, and perform any other diagnostics that might prevail problems, such as malware. A healthy computer requires vigilance and sufficient anti-virus software to be installed at all times. Any of these issues can potentially lead to a slow-down or hinder the operation of your computer.

There are no special skills needed to complete these instructions other than a steady hand. Before beginning this guide, make sure that you have all the required tools listed below as well as the new hard drive.

Carefully follow all power-down procedures described in step one.



TOOLS:

- [Phillips #00 Screwdriver](#) (1)
 - [Phillips #0 Screwdriver](#) (1)
 - [iFixit Opening Tools](#) (1)
 - [Jimmy](#) (1)
-

Step 1 — Battery



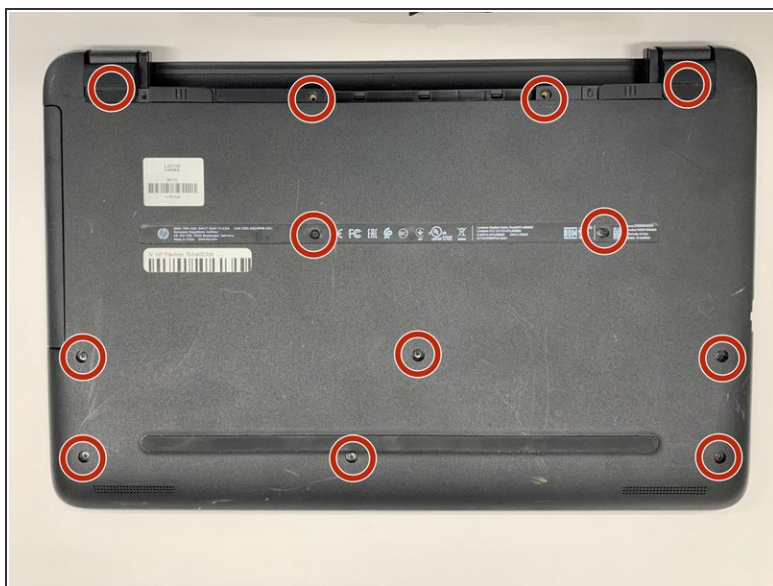
- Unplug the AC adapter from the corresponding socket in the laptop.
- ⚠ Turn off your laptop before starting this procedure. Make sure it's not in sleep or hibernation mode.
- Use your fingers to push the slider located just under the battery on either side to unlock the battery from the laptop.
- Carefully slide the battery out of the laptop frame and place it somewhere safe.

Step 2 — Disc Drive



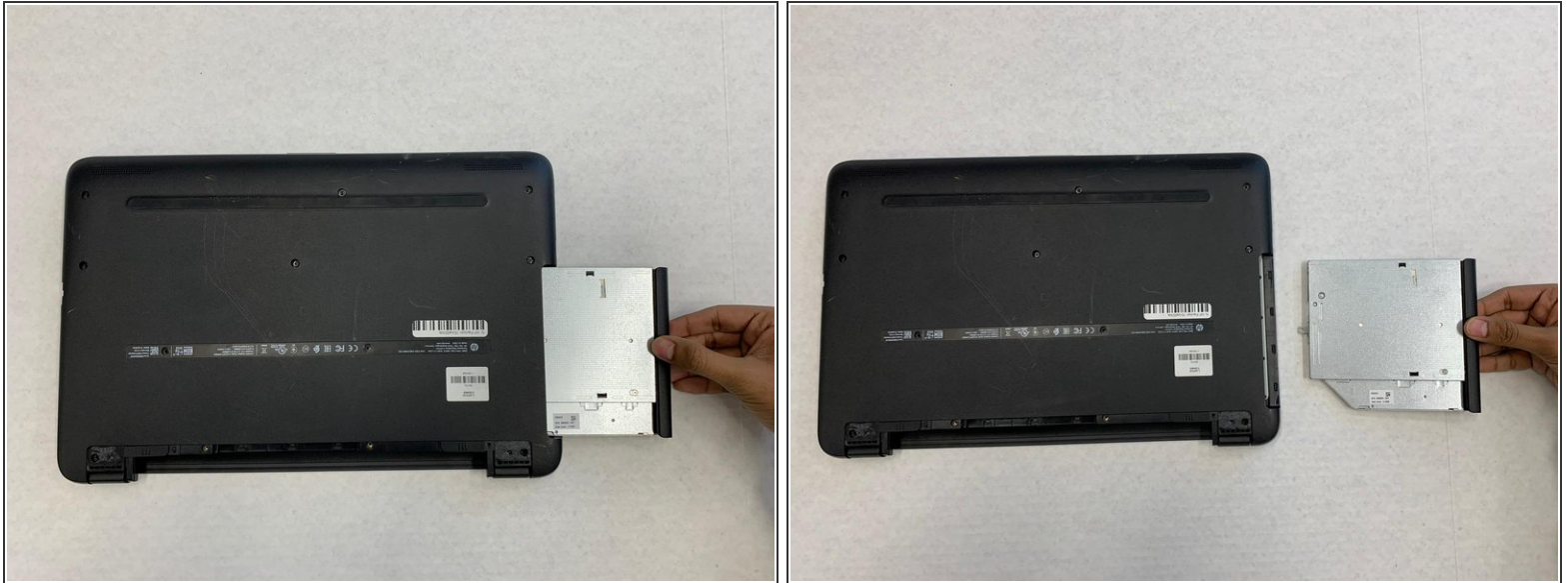
- Remove the two rubber feet next to the battery.

Step 3



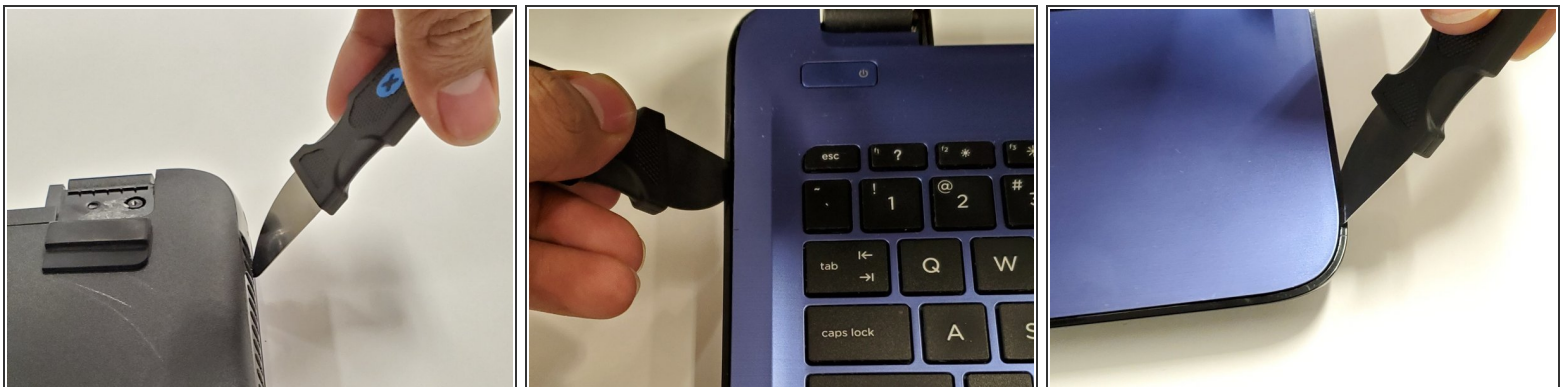
- Remove twelve 8mm Phillips #00 screws including two underneath the rubber feet.

Step 4



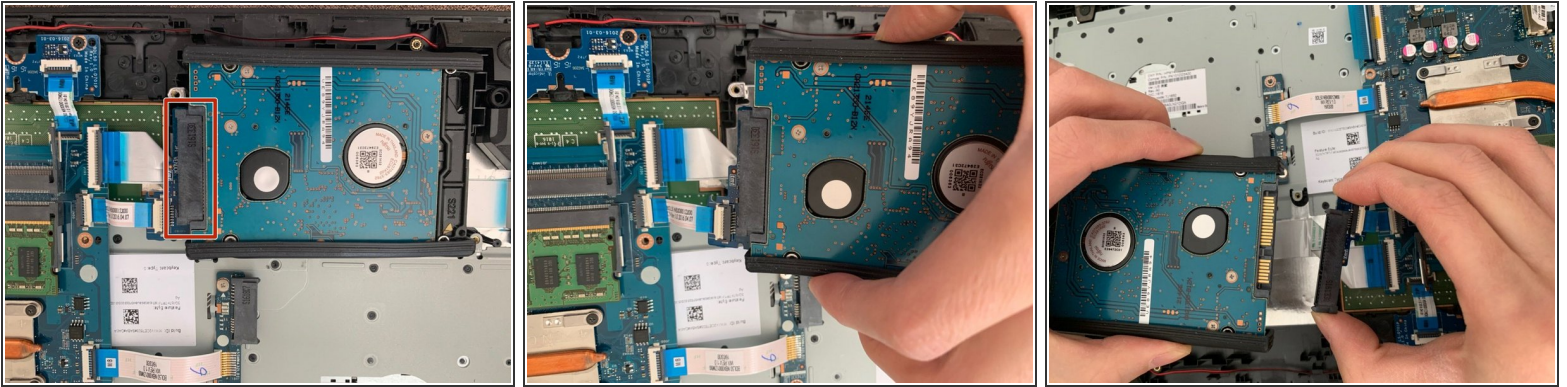
- Pull out the disc drive by hand.

Step 5 — Backplate



- Use a Jimmy to pry off the black backplate.

Step 6 — Hard Drive



- Remove the data connector from the hard drive.

To reassemble your device, follow these instructions in reverse order.