



# InFocus IN3104 Speaker Replacement

This guide will help you replace speakers that are installed on the device.

Written By: Tae Min Kim



---

## INTRODUCTION

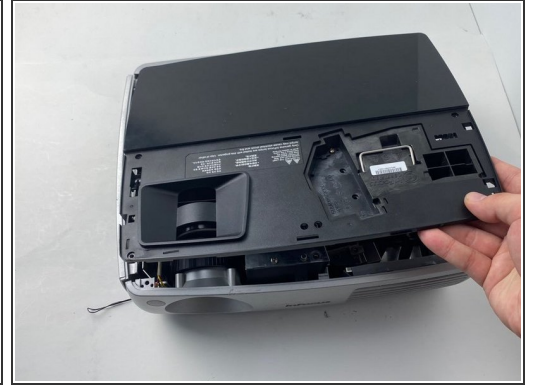
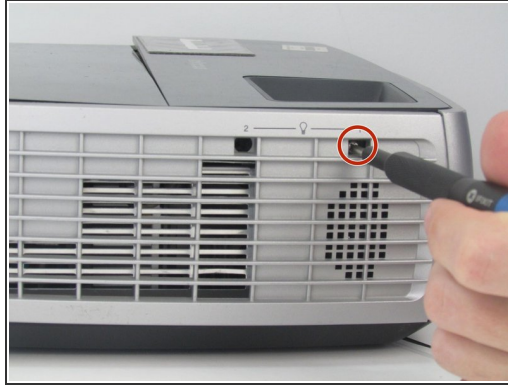
The InFocus IN3104 has two speakers installed. If you can't hear any sound playing from the device or sound is only coming from one side, you will have to replace one or both of the speakers. For this guide, you need a Phillips # 1 screwdriver head. This task does not need any special skills to complete.



### TOOLS:

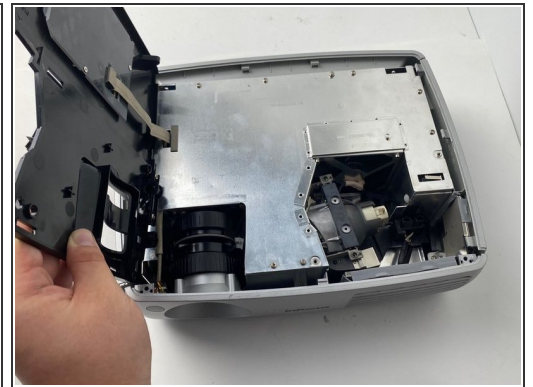
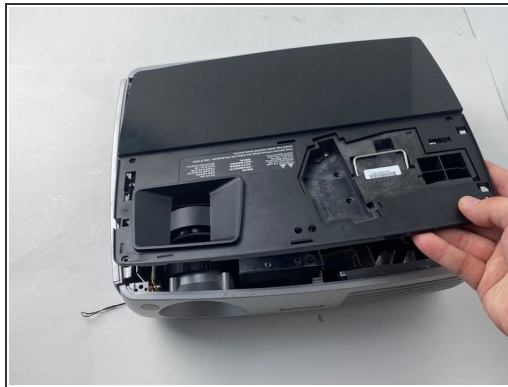
- [Phillips #1 Screwdriver](#) (1)
  - [Spudger](#) (1)
  - [Magnetic Project Mat](#) (1)
-

## Step 1 — Top Cover



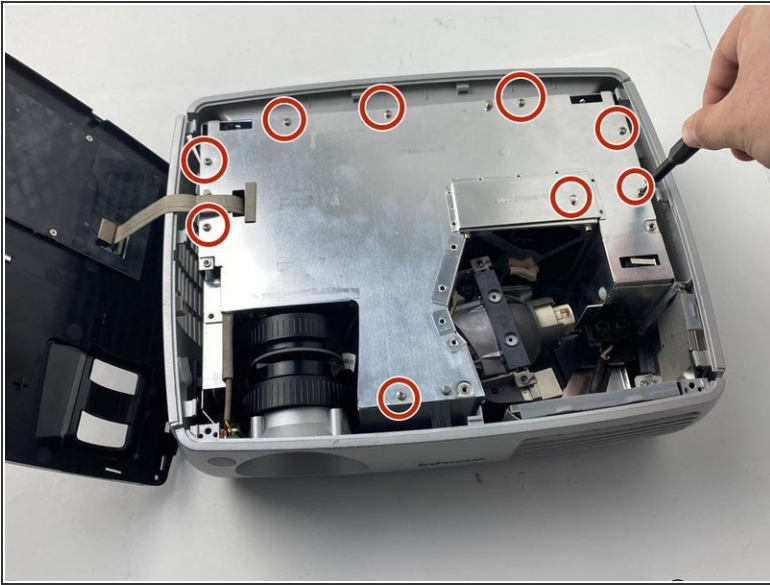
- Turn the projector so that the lens is facing you.
- i** On the left side of the projector, there is a screw and a knob inside of the small grate.
- Use a Phillips #1 screwdriver to remove the 6 mm screw that secures top cover.
- Remove the service cover.

## Step 2



- Use a Phillips #1 screwdriver to remove the seven 6 mm screws.
  - Use a Phillips #1 screwdriver to remove the two 5 mm screws.
  - Remove the top cover.
- ⚠ Do not pull the cover too hard. It may damage the wire that is connected to the motherboard.**

### Step 3 — InFocus IN3104 Metal Cover Disassembly



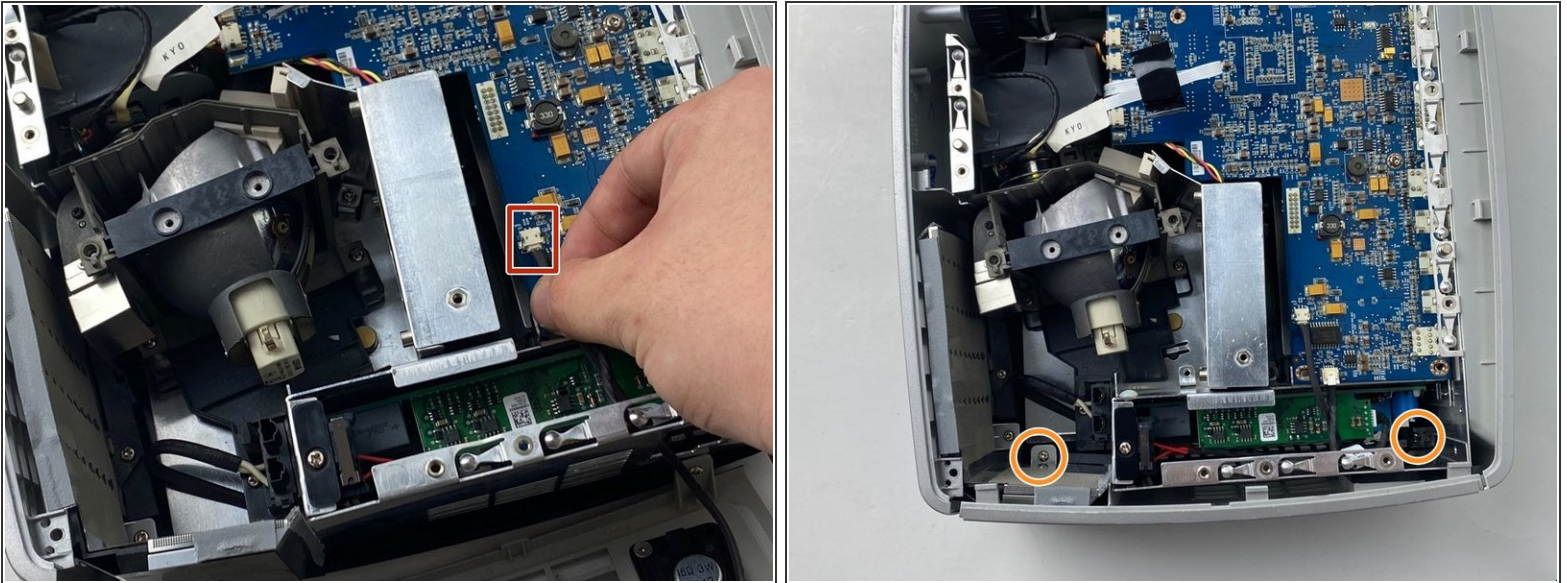
- Use a Phillips #1 screwdriver to remove the nine 6 mm screws.
- Lift up the metal cover and set it aside to reveal the motherboard.

### Step 4



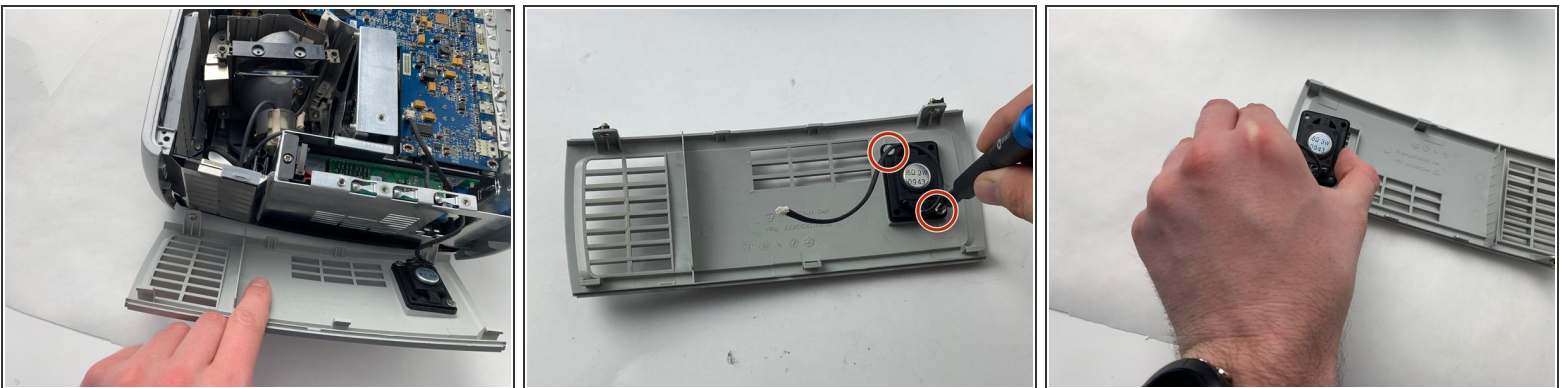
- Carefully pry up the black plastic locking bar of the ZIF connector on the motherboard with a plastic spudger.
- Pull out the blue-tipped, white ribbon cable from the connector.
- Remove the metal cover.

## Step 5 — Speaker



- Unplug the speaker wire that is located right behind the cooling fan.
- Use a Phillips #1 screwdriver to remove the two 6 mm screws on the frame brackets.

## Step 6



- Remove the side panel.
- Use a Phillips #1 screwdriver to remove the two 6 mm screws.
- Remove the speaker by pulling it straight out.

To reassemble your device, follow these instructions in reverse order.

This document was generated on 2022-06-20 11:30:25 AM (MST).

