



Sony BDP-BX510 Outer Cover Replacement

This guide will provide the steps needed to remove the outer cover of the Sony BDP-BX510.

Written By: Niki Ngosi



INTRODUCTION

This guide will help you remove the outer cover of your Sony BDP-BX510 so that you can start the replacement steps in the other guides.




TOOLS:

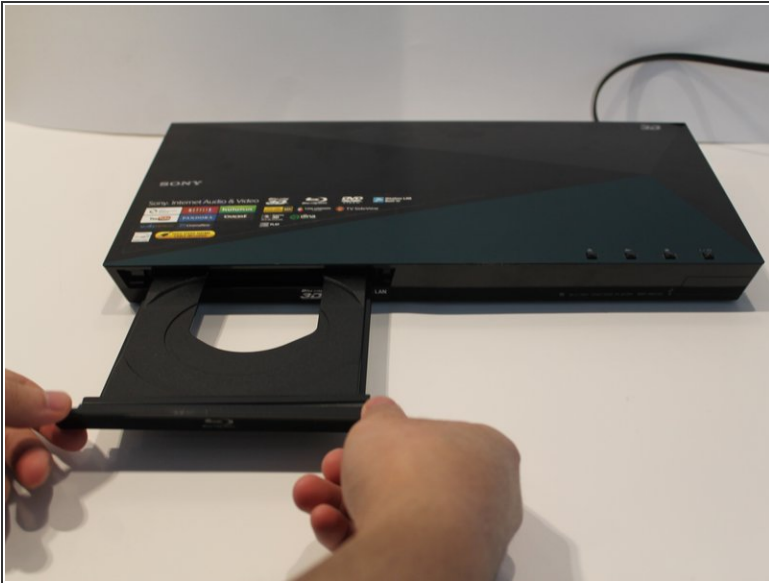
- [Phillips #2 Screwdriver](#) (1)
-

Step 1 — Outer Cover



- Plug in the device to turn it on, then press the eject () button to open the tray.

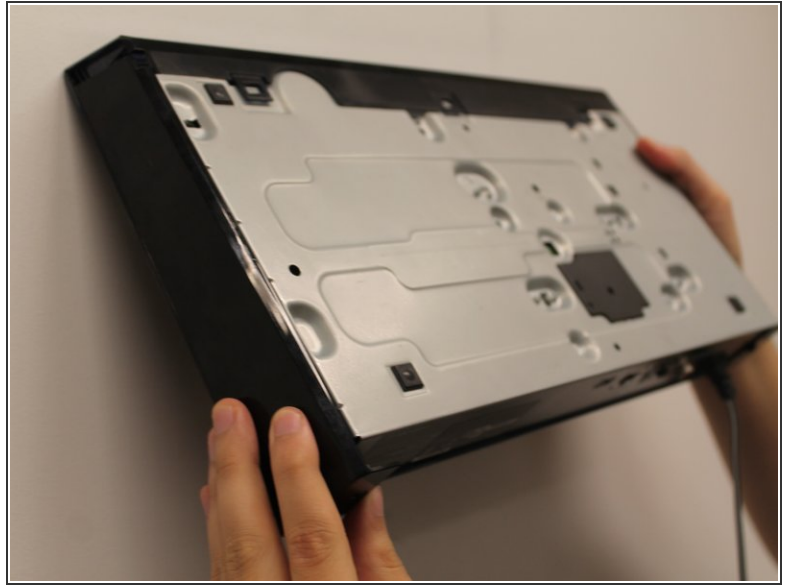
Step 2



- To remove the tray cover, hold both sides of the tray cover and gently apply a downward pressure.
- Apply slightly more pressure to the left side until it unhooks then unhook the right side.
- Close the disk tray by pressing the eject button again, then power off the device and unplug it.

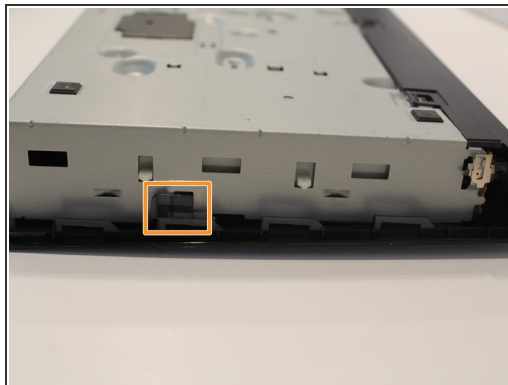
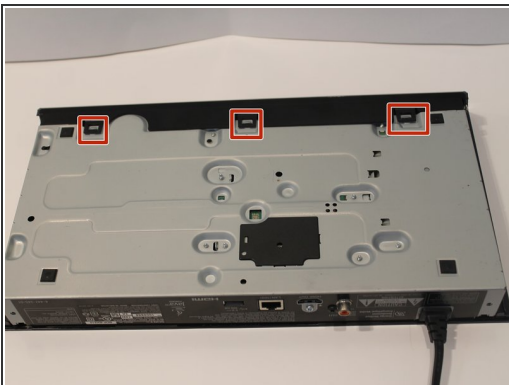
 Do not use too much force to remove the tray cover as you may break it.

Step 3



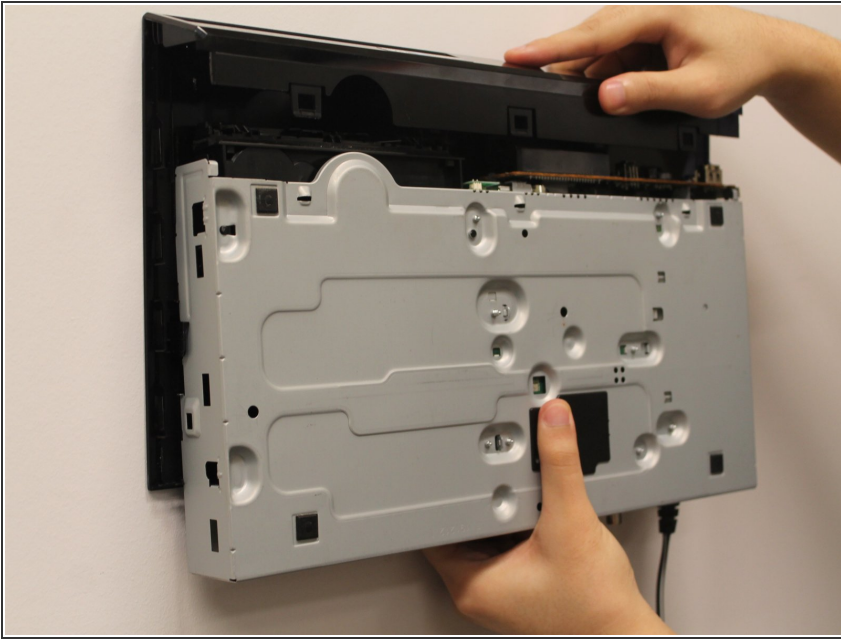
- Turn to the back of the device.
- Remove the two 7mm Phillips #2 screws.
- Slide the two plastic covers on both sides of the device towards the back of the device to remove them.

Step 4



- Turn the device so you can see the bottom.
- Unclip the three black plastic clips on the bottom of the device.
- Unclip one clip on each side of the device.

Step 5



- Slide the cover forward to remove.

To reassemble your device, follow these instructions in reverse order.